

Stanton Williams
36 Graham Street
London N1 8GJ
Phone +44 (0)20 7880 6400
Email info@stantonwilliams.com
www.stantonwilliams.com

Alex Buckland
Stanton Williams
36 Graham Street
London
N1 8GJ

09 March 2015

Project

Building T5, King's Cross
Central

Ref

426

Directors

Alan Stanton
Paul Williams
Gavin Henderson
Peter Murray
Patrick Richard

Associates

Stuart Bourne
Doriano Chiarparin
Anne Fehrenback
Stephen Hadley
Anna Hesketh
Kalpesh Intwala
Kaori Ohsugi
Rawden Pettitt
Tom Shell
Caryl Stephen
Meike Stockmann
Richard Wardle
Henry Williams

Stanton Williams Limited
Registered address above
Registered in England
Number 4024351

Application Ref: **2013/2481/P**

FAO: Ed Jarvis

Dear Ed,

Please find attached to this letter information relating to the discharge of conditions for application 2013/2481/P:

**Building T5
Kings Cross Central
York Way
London
NC1**

Information attached relates to the discharge of the following conditions:

2(a) - External materials and finishes

SK_P1 - Brickwork (as viewed on site 14.01.15)

SK_P2 - Windows (as viewed on site 14.01.15)

SK_P2 - Metalwork (as viewed on site 14.01.15)

SK_P3 - Render: Balcony soffits + West elevation

SK_P4 - Render/Metalwork: Car park

Please advise if you require any additional information of samples to be submitted in relation to the above items.

Note: Information relating to condition 2(b) and 2(c) will be submitted shortly.

3 - External lighting

SK_P6 - South Elevation Lighting

SK_P7 - North Elevation Lighting

L_DataSheet01 - Light Fitting 01

L_DataSheet02 - Light Fitting 02

L_DataSheet03 - Light Fitting 03

L_DataSheet04 - Light Fitting 04

426_21_414-416 - Entrance lighting location

426_21_403 - Balcony lighting location

4 - Bird/bat box location and type

SK_P5- Bird/Bat box type

SK_892 - Bird/Bat Box Locations

Please also find enclosed samples and list (**SK_P6**) including:

Bricks (as viewed on site 14.01.15)

Metalwork (as viewed on site 14.01.15)

Render types

Other metalwork finishes

Precast coping

If you require any additional information or have any comments/questions please do not hesitate to contact us.

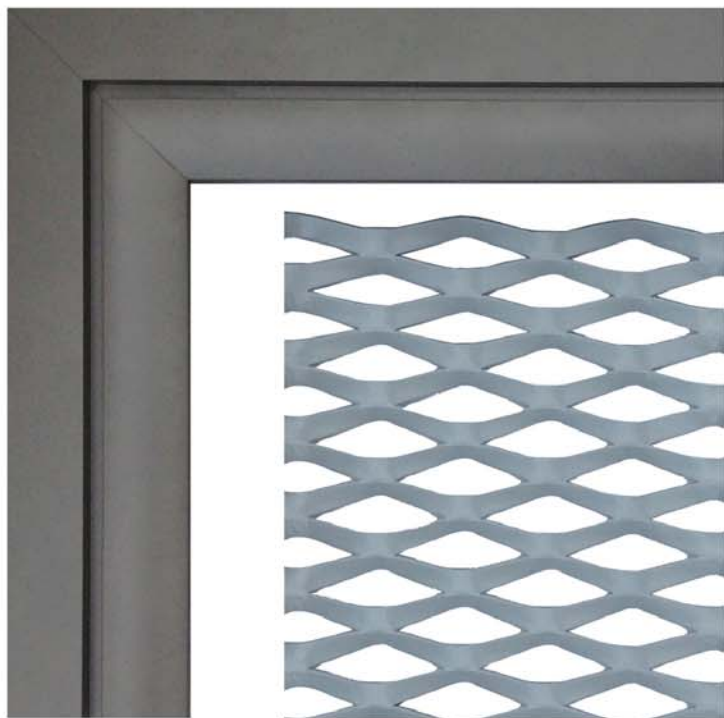
Best wishes,

Alex Buckland

STANTON
WILLIAMS

2013/2481/P

Information relating to the discharge of condition 2(a) – External Materials and finishes



1

2



5



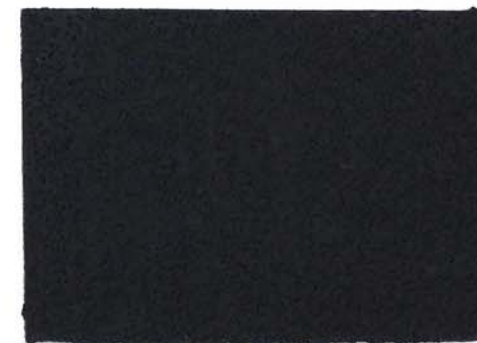
6



9



7



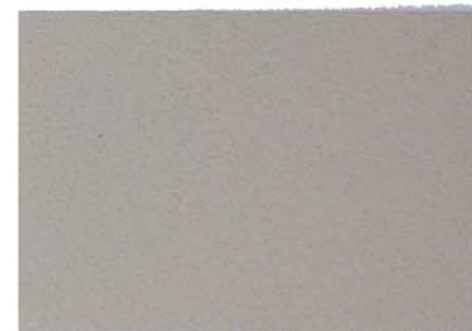
10



3



4



8

SAMPLE KEY:

- 1. Metalwork: windows/entrance/pergola uprights
- 2. Metalwork: mesh to north elevation windows.
- 3 Metalwork: stainless steel pergola canopies
- 4 Metalwork: mesh to entrance portal
- 5 Brick: example 'buff' brick
- 6 Brick: example 'white' brick
- 7 Precast: roof coping
- 8 Render: balconies
- 9 Render: west flank wall
- 10 Render: carpark/service area - north elevation

**Building T5
SK_P8**

Submitted samples sheet

To be read in conjunction with sample product info - SK_1-5



North and south elevation - Buff mix

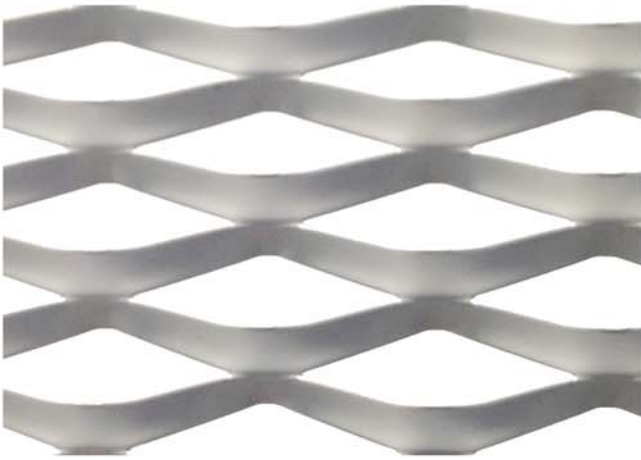


Courtyard, balcony and 02-07 north elevation - White mix

Building T5
SK_P1
Condition 2 (a)
Brickwork - As viewed on site 14.01.15



*Metalwork: Entrance, window frames, pergola uprights.
Powder coated aluminium/steel - Interpon - Gris: 2500 Sable: Futura*



*Metalwork: Framed mesh, north elevation.
Powder coated aluminium/steel - Metallic RAL: 9006*



*Metalwork: Perforated entrance soffit/bike store door
Aluminium - no finish*

Building T5
SK_P2
Condition 2 (a)
General Metalwork
- As viewed on site 14.01.15

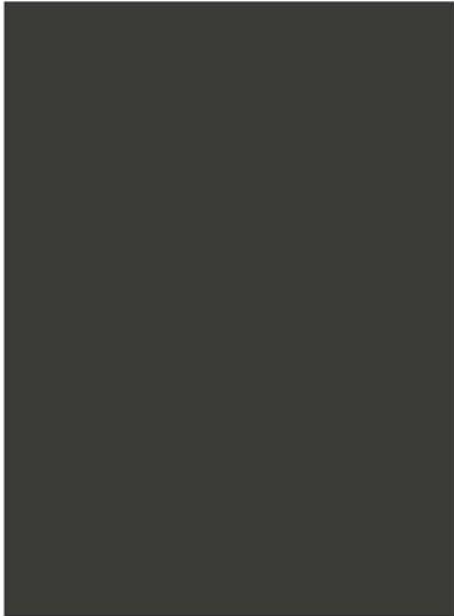


*Render: Balcony soffits
Sto - Fine 1mm aggregate - Colour ref 31436*



*Render: West, elevation
Rockwool topcoat - 1.5mm aggregate - Colour ref BC46*

**Building T5
SK_P3
Condition 2 (a)
Render. Balcony and west elevation**



*Metalwork: North Elvation , Ground Floor.
Powder coated aluminium louvre, doors, rainscren cladding - RAL 7022*

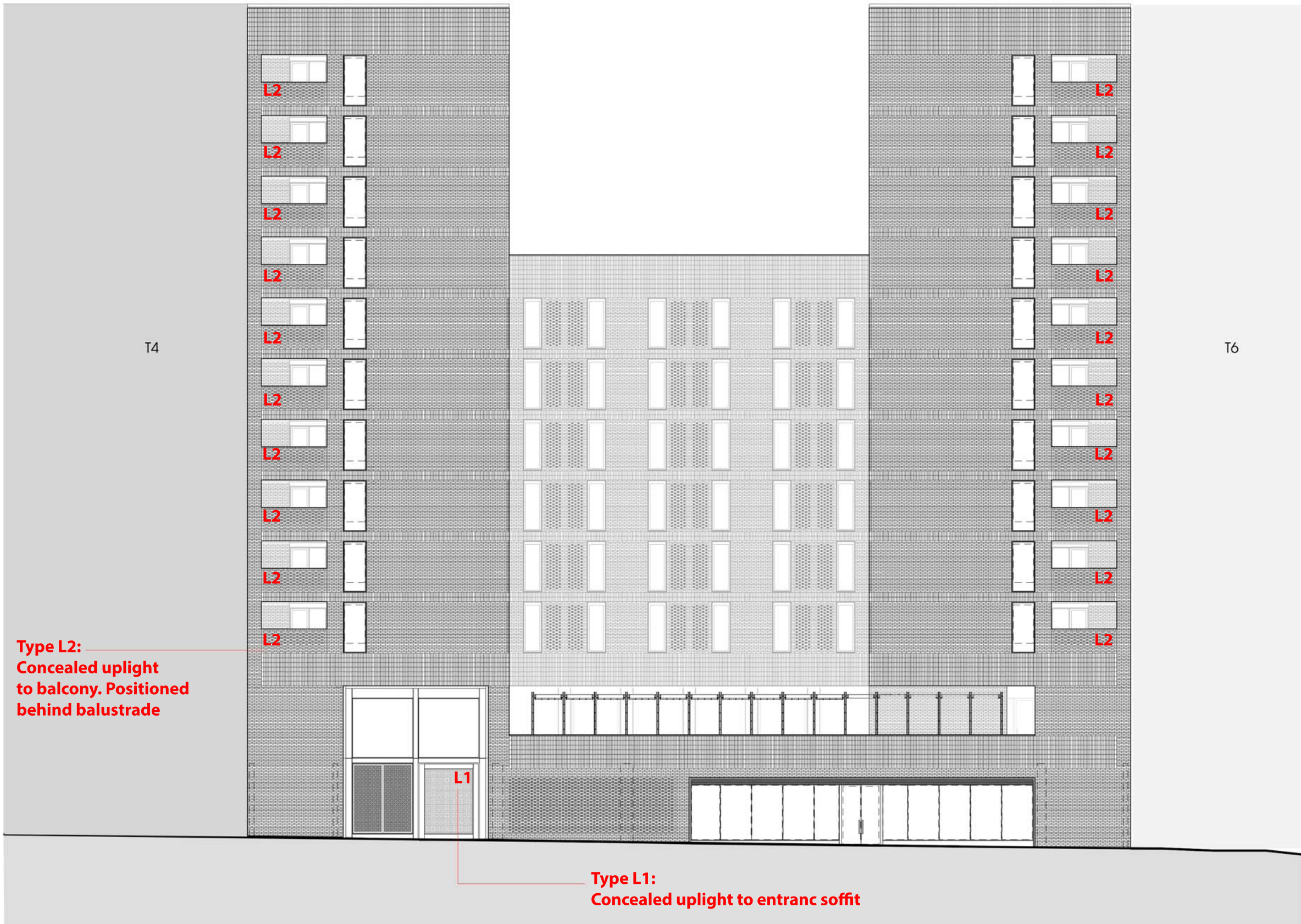


*Metalwork:: North Elevation, Car Park.
Rockwool Top Coat - 1.5mm aggregate - 2022*

Building T5
SK_P4
Condition 2 (a)
Render + Metalwork. Northe elevtion 'Service Area'.

2013/2481/P

Information relating to the discharge of condition 3 – External Lighting

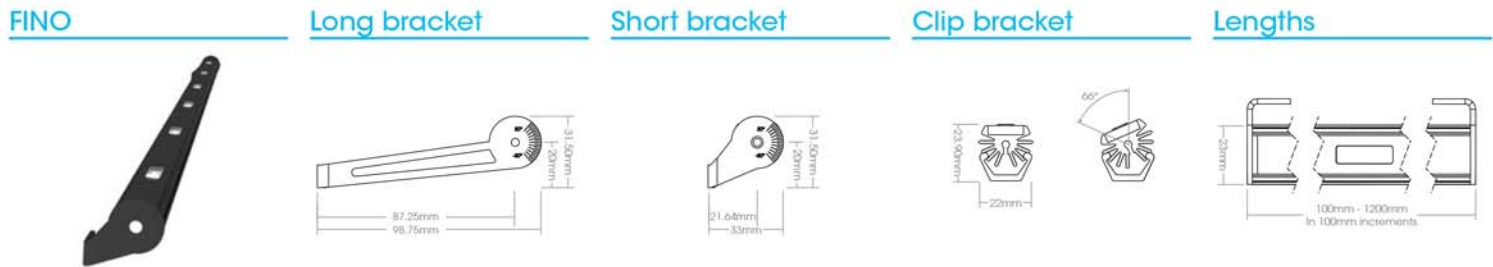


Building T5

SK_P6_South Elevation Lighting - See lighting data sheets for fitting types

Also refer to attached annotated drawings 21_415-417 (Entrance) and 21-403 (Balconies)

A micro compact, submersible, high output linear LED luminaire, delivering 950lm per metre. IP68



N.B. These products require clear airflow to maintain the LED junction temperature and lifetime of the product. Please refer to the installation instructions for necessary volumetric air details.

Luminaire

Material: Robust luminaire made from custom-made aluminium extrusion.

Finish: Extremely durable anodised aluminium silver, anodised aluminium black. For especially demanding environments use hard anodised black*, hard anodised silver*, chlorine anodised black*, chlorine anodised silver*.

Lengths: Available in 100mm increments up to 1200mm

Beam angles: Uncollimated

Accessories: Long bracket, short bracket, clip bracket.

Run: Fittings can be installed end to end for a continuous wallwash effect.

Temperature range: From -10°C to 40°C

Thermal protection: Manufactured from bespoke grade aluminium extrusion for optimal heat management.

*Upon request. Minimum order quantity applies.

Performance

Lumen Maintenance: High efficiency LEDs tested to LM80 standards, 50,000hrs lifetime with lumen maintenance at L70.

Initial lamp Lumen output*: 584lm

Lamp lumens inc thermal and optical losses*: 525lm

Luminaire Lumens output*: 372lm

Power consumption (inc 85% efficient driver): 9.6W

Efficacy (Lm/W): 38.75

LED Pitch: 100mm, RGB 100mm

CRI: >80

Binning: Colour consistency ensured across a project - 2 step MacAdam ellipse.

LED Colour: 2700°K, 3000°K, 4200°K, 6000°K, R, G, B, A, RGB

Driver: Switched, 1-10v, PHA, Dali, DMX

Listings: CE, ETL us/c

IP rating: IP68

Warranty: 5 years

Weight: 625g per metre

*Based on 400mm at 3000°K

Specification Codes

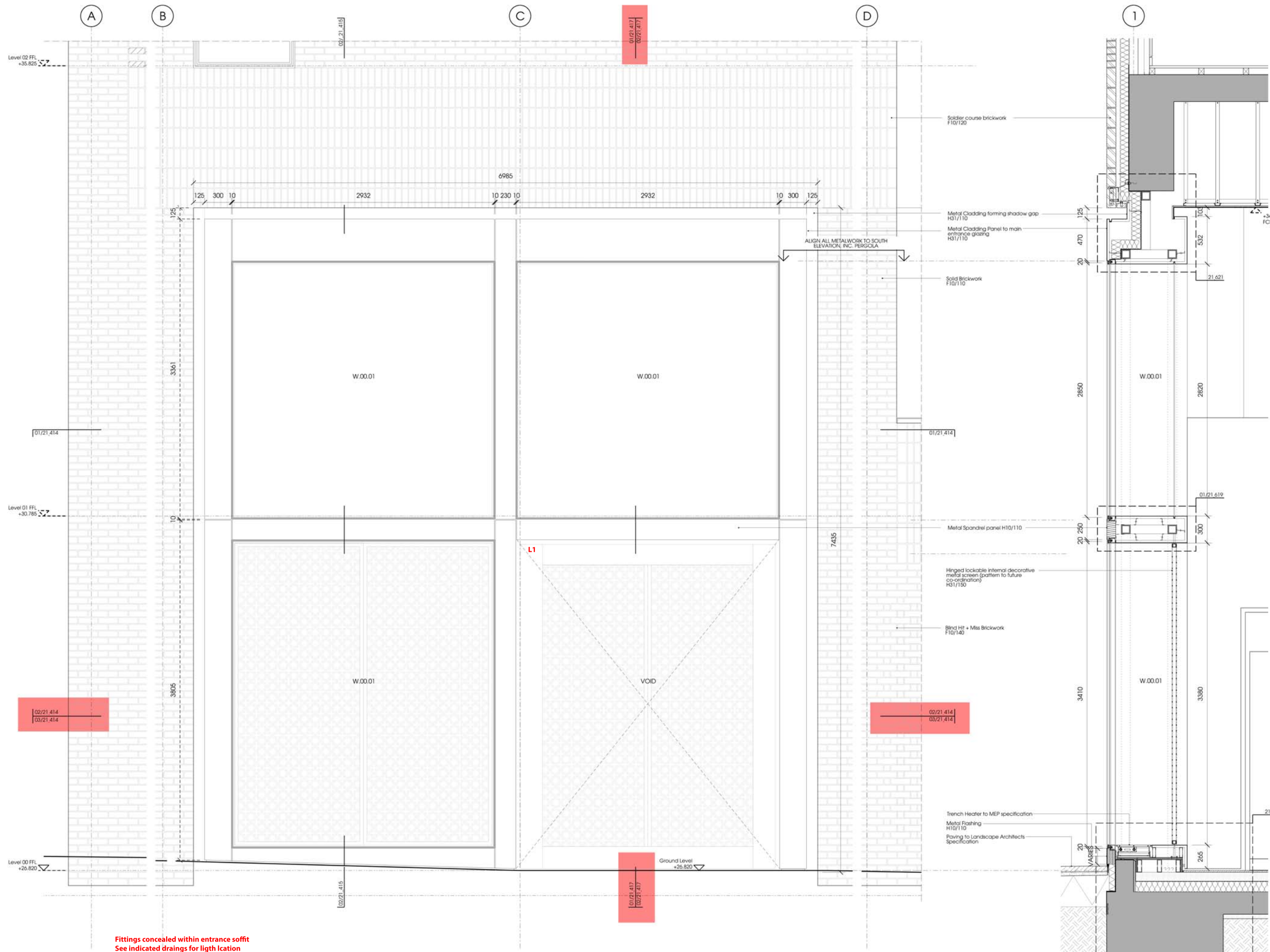
Product	Finishes	LED Colour	Length	Accessories
acdc1090	Anodised Aluminium Silver	AAS	2700°K 27	100mm 100
			3000°K 30	200mm 200
	Anodised Aluminium Black	AAB	4200°K 42	300mm 300
			6000°K 60	400mm 400
	Hard Anodised Silver	HAS	R R	500mm 500
			G G	600mm 600
	Hard Anodised Black	HAB	B B	700mm 700
			A A	800mm 800
Chlorine Anodised Silver	CAS	A A	900mm 900	
Choline Anodised Black	CAB	RGB RGB	1000mm 1000	
			1100mm 1100	
			1200mm 1200	

Driver options

Driver	No. of luminaires if known	Current	Dimming Type
acdc1900		700mA	SWT
		350mA	1-10 Phase
			DALI
			DMX

This acdc product is

- Dual binned within a 2 step MacAdam ellipse to guarantee colour consistency
- Supplied with a 5 year guarantee

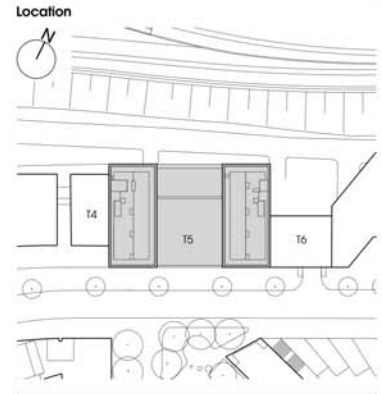


Notes
 Contractor to check all dimensions on site. Do not scale from this drawing. Stanton Williams to be advised of any variation between the drawings and site conditions.
 © Stanton Williams. All rights described in Chapter IV of the Copyright, Designs and Patents Act 1998 have been asserted.
 To be read in conjunction with the specification and all relevant drawings.

CURTAIN WALL & LOBBY DESIGN TO BE DEVELOPED WITH SUBCONTRACTOR. ALL SYSTEMS DRAWN ARE INDICATIVE ONLY

Revision	Date	Description
C1	24.09.14	Issued for Construction. Changes following subcontractors comments as per SW/ BAM email 23/05/14.
4	15.11.13	Re-issued for Stage F. Level 01 FFL changed to +30.785
3	25.10.13	Issued for Stage F. Drawings integrated into GA's, general notation amended and added. Typical section through main glazing added. Entrance facade section moved to dwg 21_417.
2	22.07.13	Stage E Issue (Glazing) Spec refs and notes updated
1	21.06.13	Stage E Reissue
-	17.06.13	Stage E Issue

Revision Date Description



Stanton Williams
 36 Graham Street
 London N1 8GJ
 Phone +44 (0)20 7880 6400
 Email 426@stantonwilliams.com
 www.stantonwilliams.com

STANTON WILLIAMS

Project
 Building T5
 King's Cross Central

Drawing Title
 Entrance Facade

Drawn	Checked	Approved
RG	ABu	KI

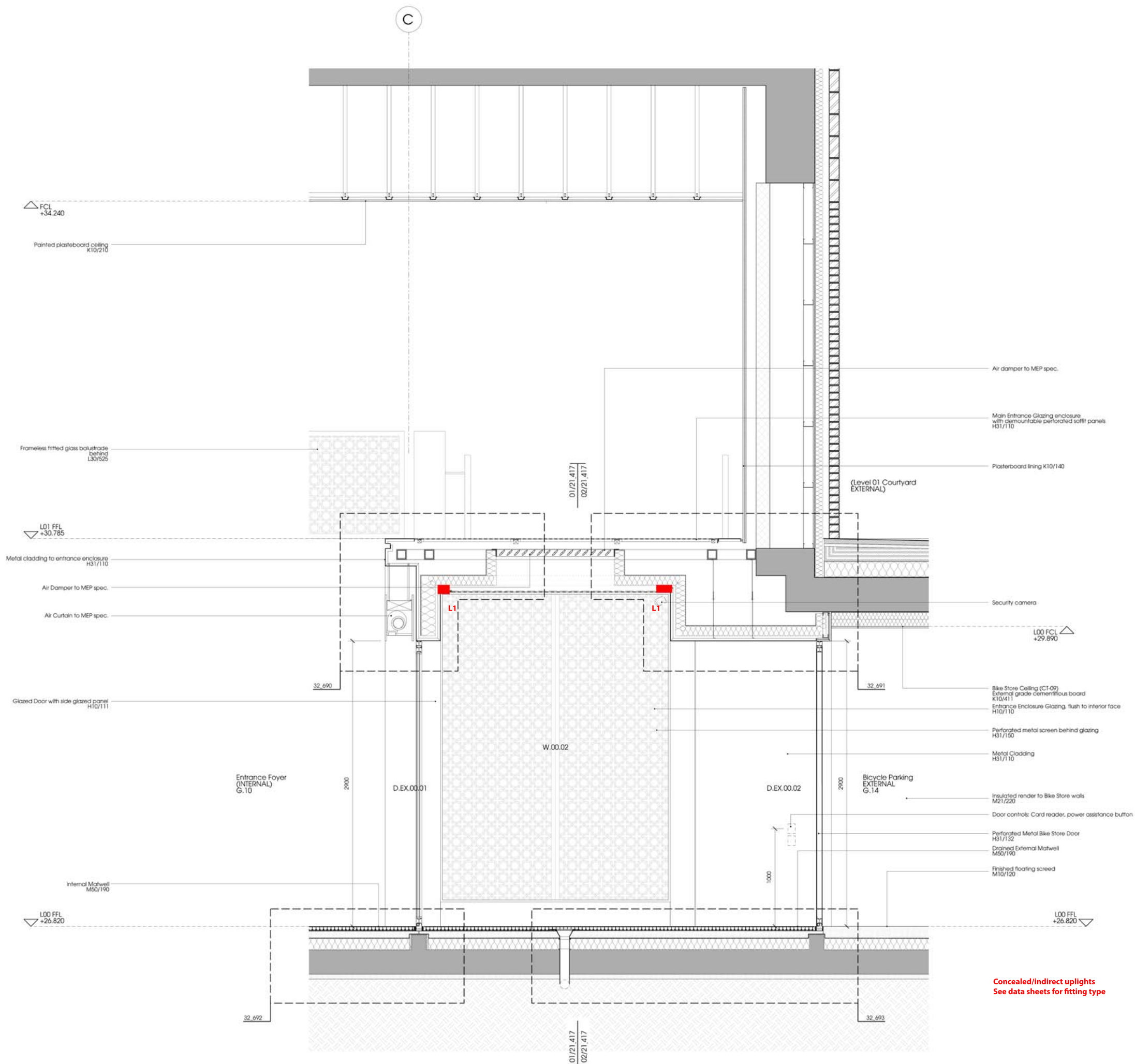
Date	Scale @ A1 (A3)	Status
17.06.13	1:20 @ A1	Construction

Project No.	Drawing No.	Revision
426	21_415	C1

Fittings concealed within entrance soffit
 See indicated drains for lighth location

01 Main Entrance Elevation
 21_415 Refer to Drawing 00_213; for plans refer to 21_414

Main Entrance Glazing - Section 02
 for plans refer to dwg 21_414 21_415

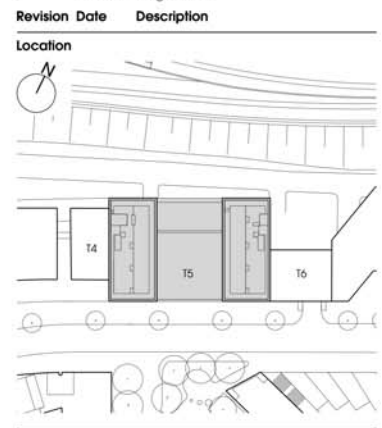


Concealed/indirect uplights
See data sheets for fitting type

Notes
Contractor to check all dimensions on site. Do not scale from this drawing. Stanton Williams to be advised of any variation between the drawings and site conditions.
© Stanton Williams. All rights described in Chapter IV of the Copyright, Designs and Patents Act 1998 have been asserted.
To be read in conjunction with the specification and all relevant drawings.

CURTAIN WALL & LOBBY DESIGN TO BE DEVELOPED WITH SUBCONTRACTOR. ALL SYSTEMS DRAWN ARE INDICATIVE ONLY

Revision	Date	Description
C1	24.09.14	Issued for Construction. Changes following subcontractors comments as per SW/ BAM email 23/05/14.
4	15.11.13	Re-issued for Stage F. Level 01 FFL changed to +30.785
3	25.10.13	Issued for Stage F. Drawings integrated into GA's, general notation amended / added. External elevations to entrance portico consolidated. Internal elevation to main entrance moved to dwg 22_463. External elevation to Bike Store Door moved to dwg 21_417
2	22.07.13	Stage E Issue (Glazing) Spec refs updated, drawing merged with 426_21_417
1	21.06.13	Stage E Reissue
-	17.06.13	Stage E Issue



Stanton Williams
36 Graham Street
London N1 8GJ
Phone +44 (0)20 7880 6400
Email 426@stantonwilliams.com
www.stantonwilliams.com

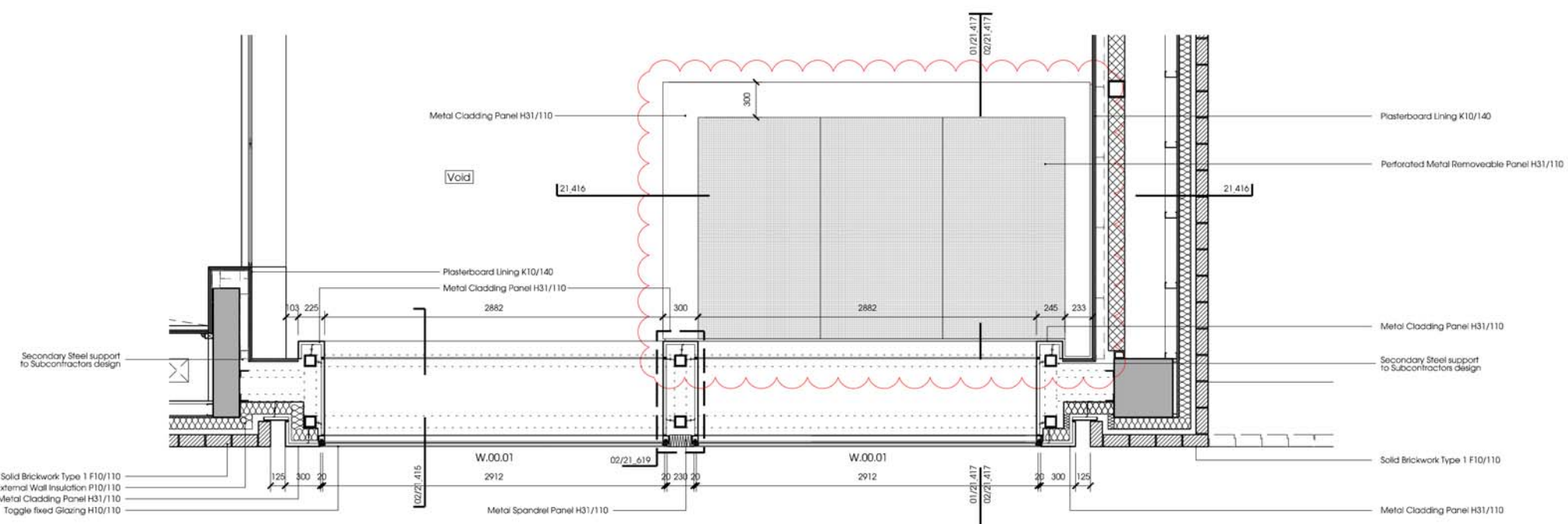
STANTON WILLIAMS

Project
Building T5
King's Cross Central

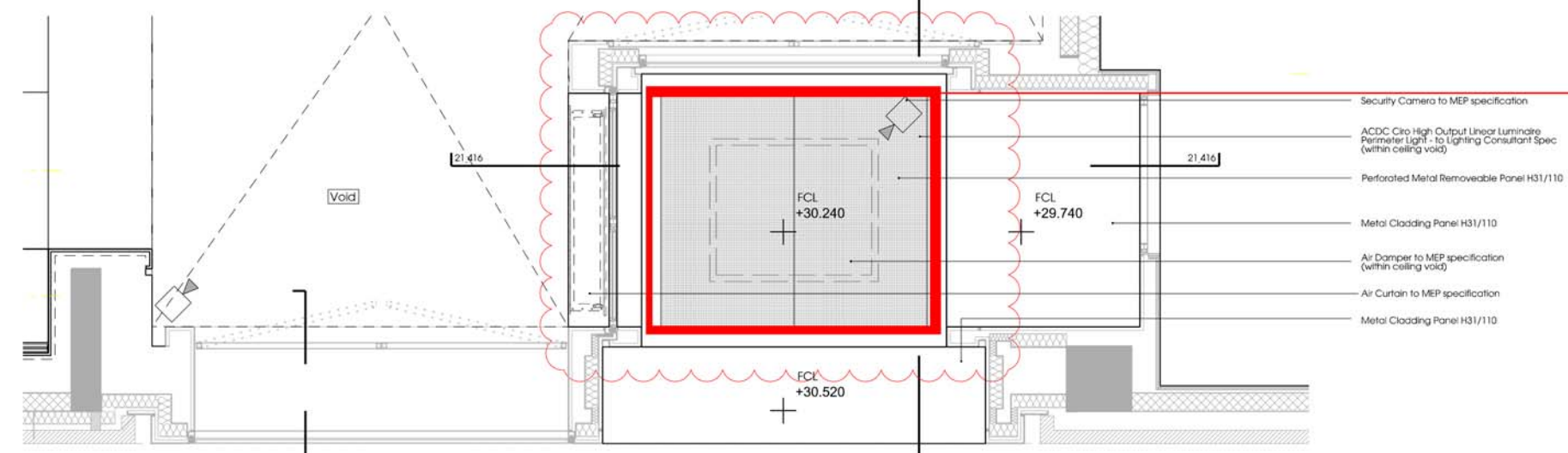
Drawing Title
Main Entrance Portico
Section

Drawn	Checked	Approved
RG	ABu	KI
Date	Scale @ A1 (A3)	Status
17.06.13	1:20 @ A1	Construction
Project No.	Drawing No.	Revision
426	21_416	C1

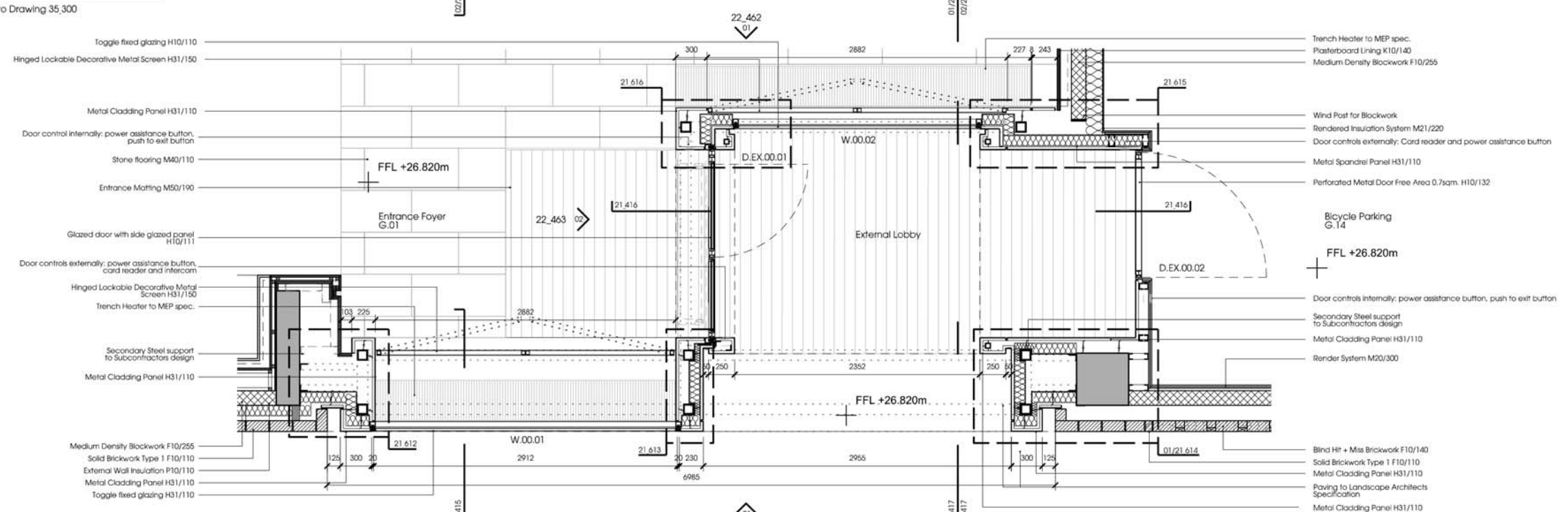
Notes
 Contractor to check all dimensions on site. Do not scale from this drawing. Stanton Williams to be advised of any variation between the drawings and site conditions.
 © Stanton Williams. All rights described in Chapter IV of the Copyright, Designers and Patents Act 1998 have been asserted.
 To be read in conjunction with the specification and all relevant drawings.



01 Main Entrance First Floor Plan
 21_414 Refer to Drawing 00_201



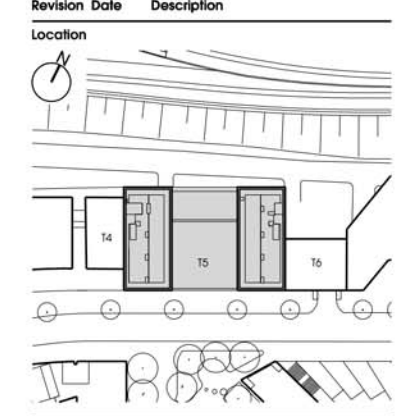
02 Entrance Lobby RCP
 21_414 Refer to Drawing 35_300



03 Main Entrance Ground Floor Plan
 21_414 Refer to Drawing 00_200

CURTAIN WALL & LOBBY DESIGN TO BE DEVELOPED WITH SUBCONTRACTOR. ALL SYSTEMS DRAWN ARE INDICATIVE ONLY

Revision	Date	Description
C2	15.12.14	Perforated metal removable panels updated
C1	24.09.14	Issued for Construction. Changes following subcontractors comments as per SW/ BAM email 23/05/14. Presentation updated. Notes simplified
4	15.11.13	Re-issued for Stage F. FFL relevant levels changed to +30.785
3	25.10.13	Issued for Stage F. Entrance Frame updated to accommodate air curtain. Drawings integrated into GA's general notation added.
2	22.07.13	Stage E Issue (Glazing) Spec refs and notes updated
1	21.06.13	Stage E Reissue
-	17.06.13	Stage E Issue



Stanton Williams
 36 Grafton Street
 London N1 8GJ
 Phone +44 (0)20 7880 6400
 Email 426@stantonwilliams.com
 www.stantonwilliams.com

STANTON WILLIAMS

Project
 Building T5
 King's Cross Central

Drawing Title
 Entrance Plan, RCP & Roof Plan

Drawn	Checked	Approved
RG	KI	ABu

Date	Scale @ A1 (A3)	Status
17.06.13	1:20 @ A1	Construction

Project No.	Drawing No.	Revision
426	21_414	C2

IGLu

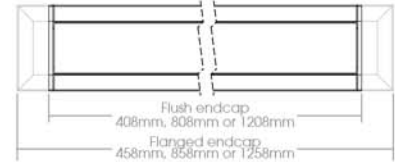
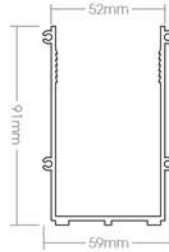
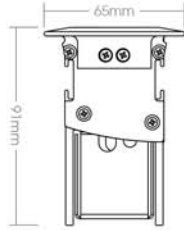
acdc1120

acdc

Bringing light to life

Compact, in-ground, mains on-board dimmable DMX driven, linear LED wallwash luminaire, providing even wash of light up to 5m. Delivering 1350lm per metre - IP67

IGLu IGLu End IGLu Sleeve IGLu Lengths



Luminaire

Material: Robust luminaire made from custom-made aluminium extrusion

Finish: Extremely durable anodised aluminium black, anodised aluminium titanium. For especially demanding environments use hard anodised black*, hard anodised titanium*, chlorine anodised black*, chlorine anodised titanium*.

Format: Three tilt options – 0°, 5° and 10° available.

Lengths: Available in 3 lengths. Flush end cap: 408mm, 808mm, 1208mm. Flanged end cap: 458mm, 858mm, 1258mm.

Beam angles: 18°, 24°, 30°, 50° x 20°

Glare control: Micro louvre to minimise glare and shield LEDs from view.

Accessories: Flange mounted end cap with holes, flange mounted end cap (no holes), mounting sleeve kit, start leads, extension leads, interconnecting leads.

Run: Fittings can be installed end to end for a continuous wallwash effect.

Temperature range: From -10°C to 40°C

Thermal management: Manufactured from bespoke grade aluminium extrusion for optimal heat management.

*Upon request. Minimum order quantity applies

Performance

Lumen Maintenance: High efficiency LEDs tested to LM80 standards, 50,000hrs lifetime with lumen maintenance at L70.

Initial lamp Lumen output*: 1420lm

Lamp lumens inc thermal and optical losses*: 1208lm

Luminaire Lumens output*: 531lm

Power consumption (inc 85% efficient driver): 14.66W

Efficacy (Lm/W)*: 36.22

LED Pitch: 33mm, RGB 33mm

CRI: >80

Binning: Colour consistency ensured across a project - 2 step MacAdam ellipse.

LED Colour: 2700°K, 3000°K, 4200°K, 6000°K, R, G, B, A, RGB

Driver: Switched, DMX

Listings: CE, ETL us/c

IP rating: IP67

Warranty: 5 years

Weight: 625g per metre

*Based on 400mm, 50x20R optics, 0° tilt

Specification Codes - IGLu

Product	Finishes			LED Colour		Optics		Dimming		Length		Angle of adjustment		IP Rating		
	Finish	Code	Temp	Temp	Temp	Temp	Temp	Temp	Temp	Temp	Temp	Temp	Temp	Temp	Temp	
acdc1120	Anodised aluminium titanium	AAT	2700°K	27	18°	18R	Dimmable	DIM	400mm	400	None	0ADJ	IP67	IP67		
	Anodised aluminium black	AAB	3000°K	30	24°	24R									Non-Dimmable	NON-DIM
	Hard anodised titanium	HAT	4200°K	42	30°	30R	50°x20°	50x20R			1200mm	1200				
	Hard anodised black	HAB	6000°K	60												
	Chlorine anodised titanium	CAT			R	R										
	Chlorine anodised black	CAB			G	G										
					B	B										
				A	A											
				RGB	RGB											

Specification Codes - Flange mounted end cap

Product	End cap option		Finishes	
	Option	Code	Finish	Code
acdc1754	Flange Mounted End Cap with countersunk holes	CSK	Anodised Aluminium Titanium	AAT
	Flange Mounted End Cap with no holes	NH	Anodised AluminiumBlack	AAB
			Hard Anodised Titanium	HAT
			Hard Anodised Black	HAB
			Chlorine Anodised Titanium	CAT
			Choline Anodised Black	CAB

Specification Codes - Mounting sleeve kit

Product	Length		IGLu end cap used with	
	Length	Code	Cap Type	Code
acdc1753	400mm extrusion	400	Standard End Cap	STE
	800mm extrusion	800	Flanged End Cap	FME
	1200mm extrusion	1200		
	2.5m cut on site	2500		

This acdc product is

- Dual binned within a 2 step MacAdam ellipse to guarantee colour consistency
- Supplied with a 5 year guarantee

Light Fitting 01

Notes
 Contractor to check all dimensions on site. Do not scale from this drawing. Stanton Williams to be advised of any variation between the drawings and site conditions.

© Stanton Williams.
 All rights described in Chapter IV of the Copyright, Designs and Patents Act 1998 have been asserted.

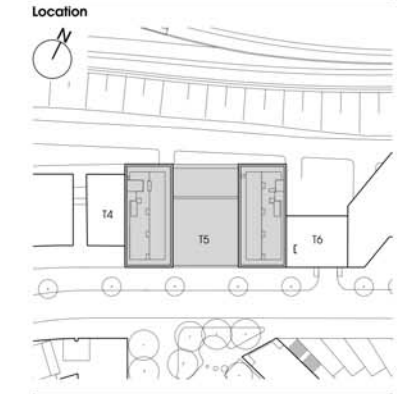
To be read in conjunction with the specification and all relevant drawings.

- EXTERNAL FINISHES KEY**
- B1 BRICK TYPE 1 - SOLID BRICKWORK - F10
 - B2 BRICK TYPE 2 - SOLDIER COURSING - F10
 - B3 BRICK TYPE 3 - OPEN HIT AND MISS BRICKWORK (FULL HIT) - F10 WITH WINDOW/INSULATED METAL CLADDING BEHIND
 - B4 BRICK TYPE 4 - OPEN HIT AND MISS BRICKWORK (BALUSTRADE) - F10
 - B5 BRICK TYPE 5 - 'BLIND' HIT AND MISS BRICKWORK - F10 (BRICK COLOUR: W - WHITE, B - BUFF SEE SPEC F10)
 - MP METAL PANEL CLADDING - H31
 - MS METAL SCREEN/PERGOLA - B91
 - EG EXTRACT GRILLE
 - ER EXTERNAL INSULATED RENDER - M21

XX.XXX CRITICAL DATUM
 +
 REFER TO LIGHTING CONSULTANT DRAWINGS + SPECIFICATION FOR LIGHT FITTING INFORMATION.
 REFER TO M+E CONSULTANTS DRAWINGS + SPECIFICATION FOR M+E INFORMATION.
 REFER TO GLAZING SUBCONTRACTOR DRAWINGS FOR GLAZING INFORMATION

- C3 17.02.15 AOV Structural Opening Updated
- C2 17.11.14 Soffit detail updated to increase service zone. Angle detail updated
- C1 15.08.14 Issued for Construction. Light fitting to balconies & Trickle vent shown for clarity
- 4 14.02.14 Balustrade updated
- 3 07.02.14 Internal Linings to AOV & detail references revised. Bracket revised
- 2 25.10.13 Revisions as bubbled. Annotation updated/added for clarity
- 1 30.08.13 Balcony Balustrade Detail Updated. Overpanel added to Sliding Doors. Slab Structure Updated
- 23.08.13 Issued for information previously drawing no. 426_21_303

Revision Date Description



Stanton Williams
 36 Graham Street
 London N1 8GJ
 Phone +44 (0)20 7880 6400
 Email 426@stantonwilliams.com
 www.stantonwilliams.com

STANTON WILLIAMS

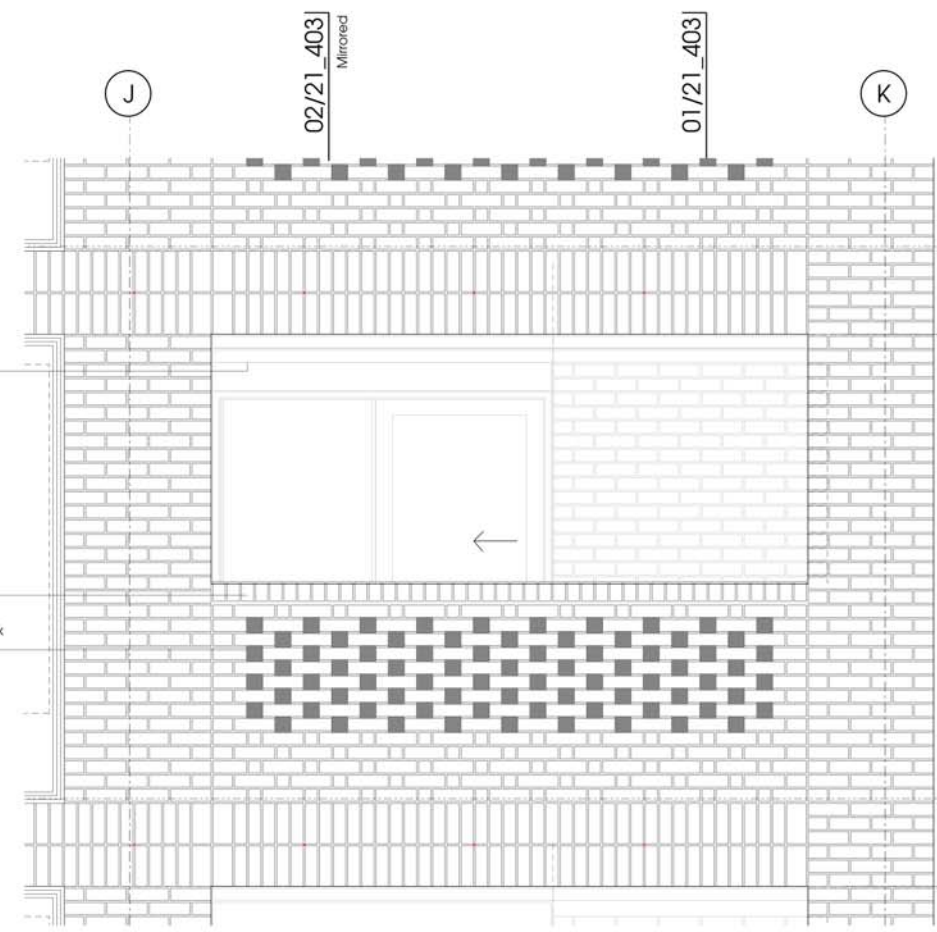
Project
 Building T5
 King's Cross Central

Drawing Title
 Balcony
 Facade
 Levels 02-11
 Elevation and Section

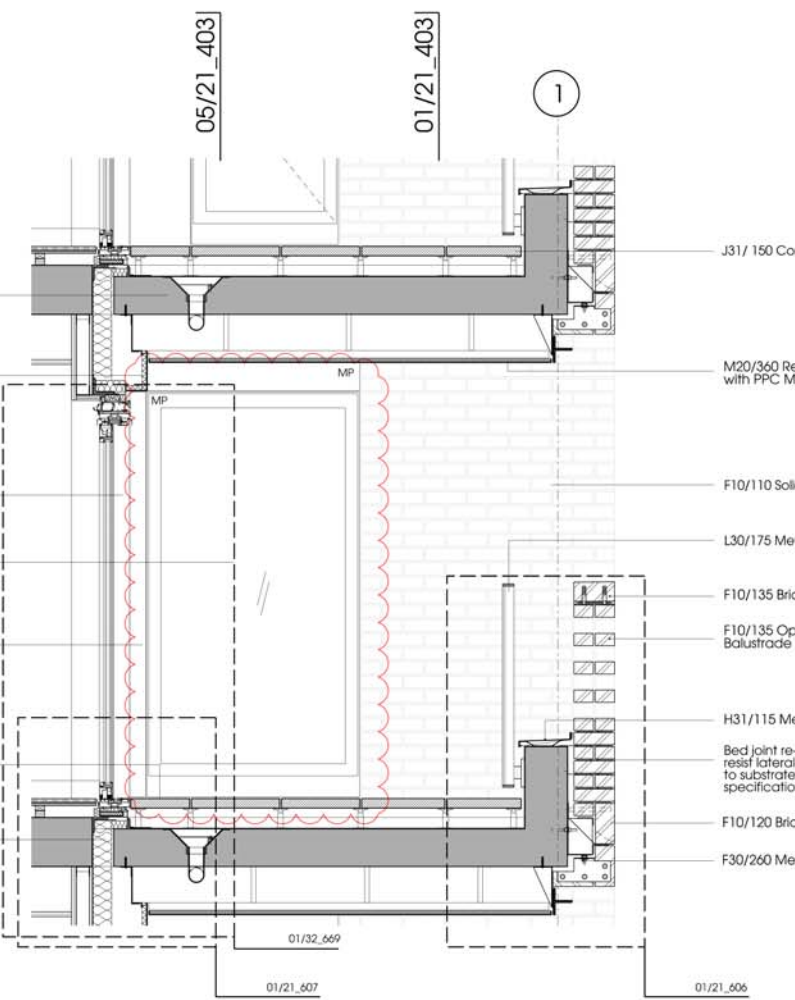
Drawn	Checked	Approved
AG	ABU	KI

Date 25/01/13 **Scale @ A1 (A3)** 1:20 @ A1 **Status** Construction

Project No. 426 **Drawing No.** 21_403 **Revision** C3

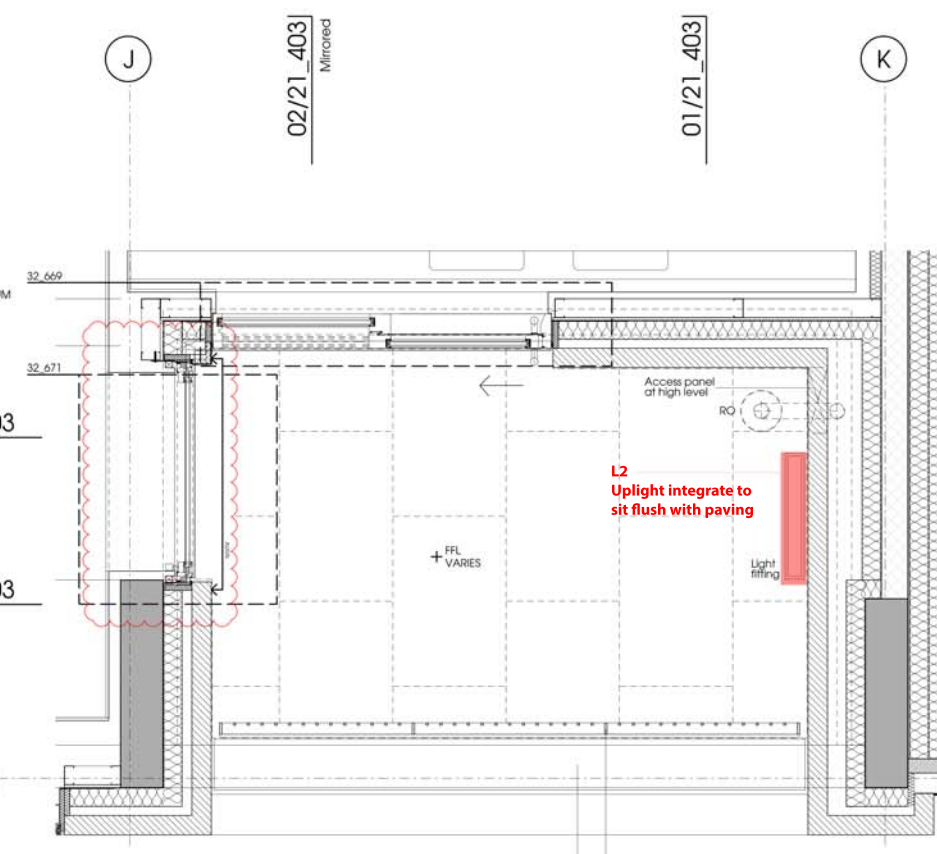


03 Partial Elevation of Typical Balcony
 21_403 Refer to Drawing 00_213



01 Typical section through Brickwork Wall
 21_403 Refer to Drawing 00_213

02 Typical section through balcony (FF)
 21_403 Refer to Drawing 00_213

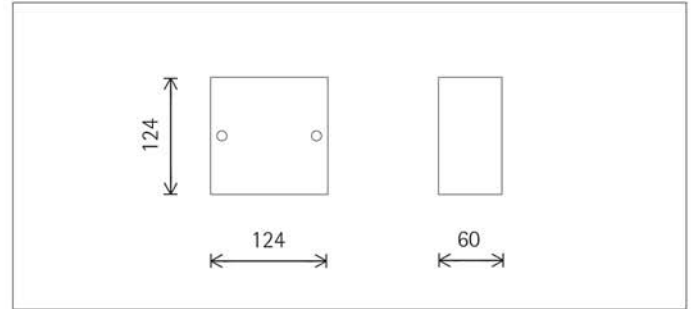


04 Typical Section through AOV
 21_403 Refer to Drawing 00_213

05 Long section through Balcony
 21_403 Refer to Drawing 00_213

06 Typical Balcony Plan
 21_403 Refer to Drawing 00_202

L30/175 Metal Handrail
 H31/115 Metal Coping



33365.000 Graphit m
 LED 3W 330lm 3000K warm white
 Switchable
 Version 7
 Connected load 5W
 Sculpture lens, wide beam

Product description

Housing and wall plate: corrosion-resistant cast aluminium, No-Rinse surface treatment. Double powder-coated. Optimised surface for reduced accumulation of dirt.

Electronic control gear. 2 cable entries. Through-wiring possible. 3-pole terminal block.

LED module: high-power LEDs on metal-core PCB. SDCM<2. CRI>90. L80/B10 50000h. Collimating lens made of optical polymer.

Softec lens as safety glass.

Protection mode IP65: dust-proof and water jet-proof.

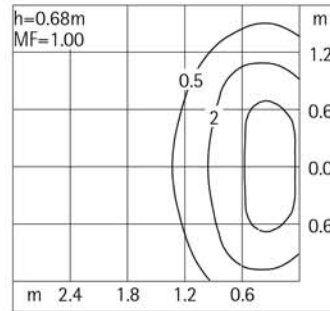
Weight 0.88kg

Energy efficiency class EEI A++

Housing temperature 34°C

Temperature on the light aperture 35°C

LMF F



LED 3W 330lm 3000K warm white



Building T5
SK_P7_North Elevation Lighting-See lighting data sheets for fitting types

LUMINAIRE SPECIFICATION

PROJECT	Kings Cross Central - Building T5
----------------	-----------------------------------

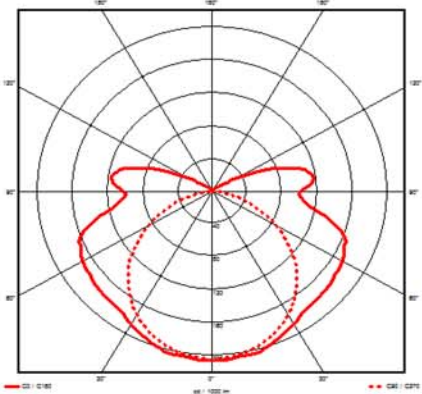
LUMINAIRE REF
E1

LOCATION
Ground Floor - Bicycle Parking, Car Parking and Generator Room (G.14, G.18 & G.25)

DESCRIPTION
2 x 35w T5 HF IP65 ceiling or wall mounted polycarbonate constructed non-corrosive luminaire complete with polycarbonate diffuser

ILLUSTRATIONS, DETAILS & DATA



ADDITIONAL INFORMATION	LUMINAIRE DATA	
Lamp lumens - 6600, LOR - 91.8%, Luminaire lumens - 6058.8 (87 lm/w)	LUMINAIRE REF:	DL-S35/JT/235/HF
	MANUFACTURER:	Diligent Lighting
	CONTROL GEAR:	HF
	SUPPLY:	220-240v
	FINISH:	Grey
	LENGTH:	1580mm
	HEIGHT:	
	WIDTH:	140mm
	DEPTH:	100mm
	DIAMETER:	
	CUT-OUT:	
IP RATING:	IP65	
LAMP TYPE:	35w T5 Col. 4000k / 80Ra	

PIA230

108-0419

1/3

we-ef



Description

IP66, Class I, IK08. Marine-grade die-cast aluminium alloy. 5CE superior corrosion protection including PCS hardware. Silicone rubber gaskets. Safety glass. Anodised aluminium reflector. +30° tilt

Beam Type	asymmetric forward throw
------------------	--------------------------

Lamp Type	HIT-CE 35W/c/830 G12
------------------	----------------------

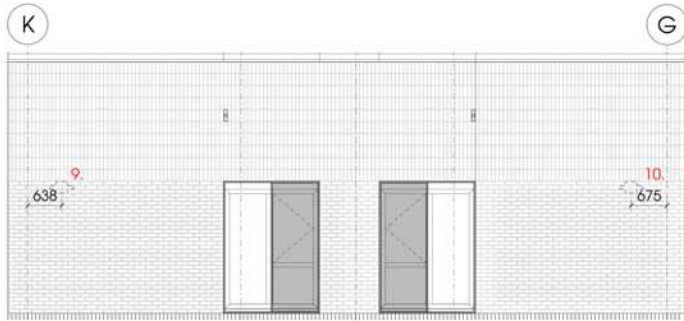
Gear Type	ECG
------------------	-----

Light Fitting 04 - Downlight only

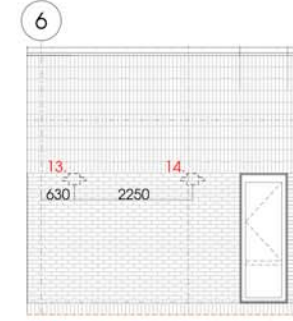
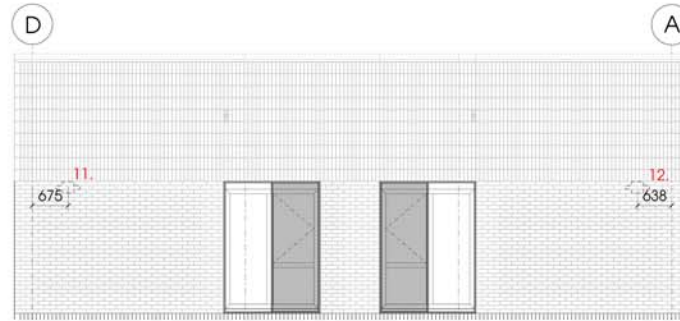
2013/2481/P

Information relating to the discharge of condition 4 – Bird/bat box types and locations

LEVEL 11
EAST



- 9. 80mm crescent hole for swifts
- 10. 70mm crescent hole for bats
- 11. 80mm crescent hole for swifts
- 12. 70mm crescent hole for bats



- 13. 80mm crescent hole for swifts
- 14. 70mm crescent holes for bats

15. and 16. on West facade to match locations indicated above. I.e 3.5 stretchers from end

LEVEL 01



- 1 - 4. 28mm round holes for great tits, tree sparrows & pied flycatchers
- 5 - 8. 32mm round holes for house sparrows & nuthatches



High level: Bat/Swift

Low level: Sparrows, Nuthatches, Pied flycatchers

Building T5

SK_P5

Condition 4

Bird and bat box types: Bird brick house - Laid into stretcher bond brickwork.
To be read in conjunction with SK_891+892