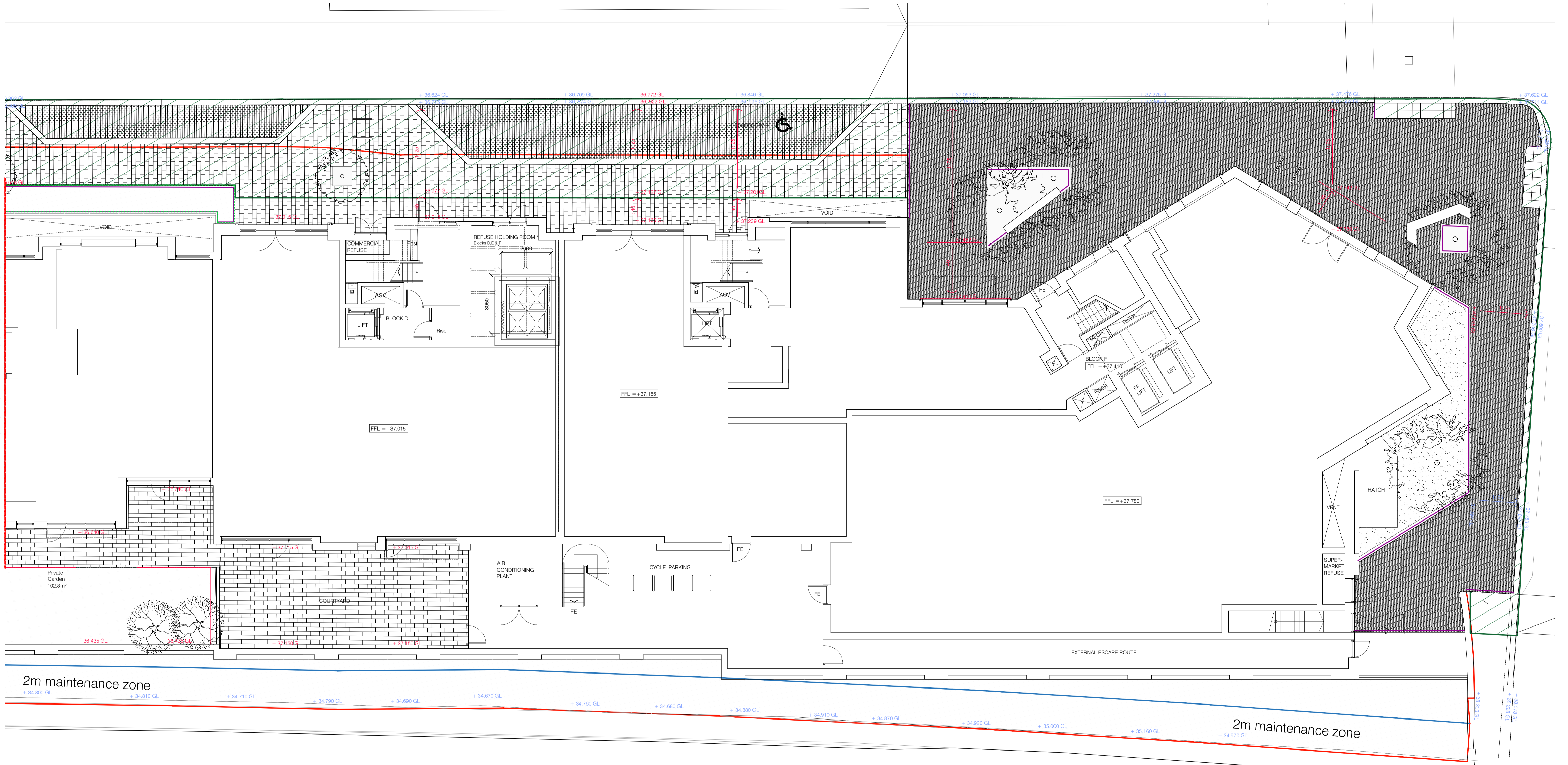
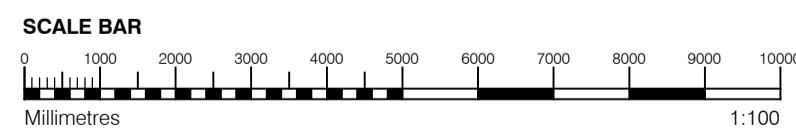


GENERAL NOTES
 This drawing is © 2015 PTE architects
 Use figured dimensions only. DO NOT SCALE.
 All dimensions are in millimetres unless noted otherwise
 All levels are in metres above ordnance datum unless noted otherwise
 This drawing must be read in conjunction with all other relevant drawings and specifications from the Architect and other consultants
 If in doubt, ask



REFER TO SK 004 FOR CONTINUATION OF SITE PLAN



GENERAL NOTES

- This drawing is copyright of PTE architects
- Use figured dimensions only. DO NOT SCALE.
- All dimensions are in millimetres unless noted otherwise
- All levels are in metres above ordnance datum unless noted otherwise
- This drawing must be read in conjunction with all other relevant drawings and specifications from the Architect and other consultants

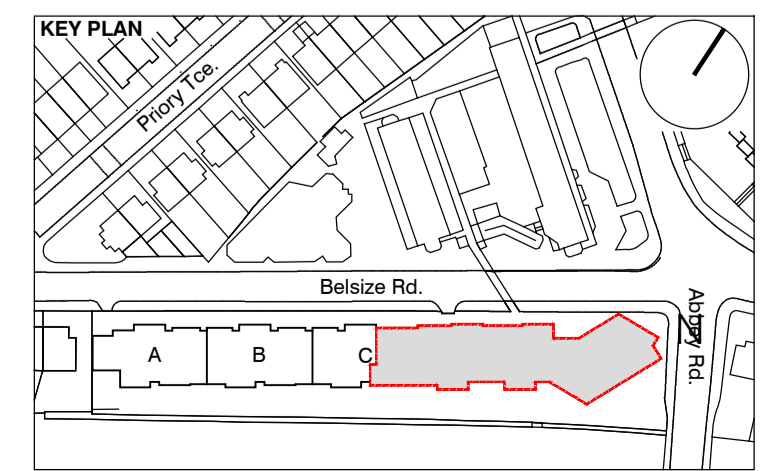
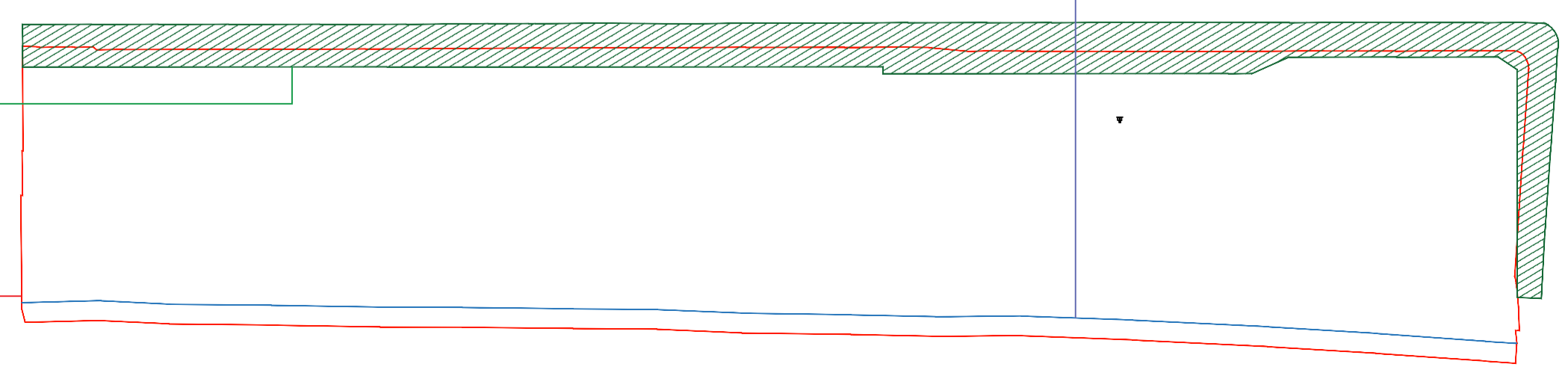
NOTES

- All setting out to be confirmed on site prior to construction - any discrepancy must be immediately reported to the Architect.
- All existing level to be checked and confirmed on-site prior to construction
- Assume crossfall to pavement of between 1.25 and 1.40 gradient. To be confirmed by Structural Engineer.

Green line denotes current indicative highways adoption boundary, supplied by FHA Landscape. It is understood that these proposals are still to be agreed with Camden Highways.

Red dashed line denotes the Phase 1 Boundary indicated on approved Planning Docs.

KEY PLAN (NTS)



REV	DATE	DESCRIPTION	DRAWN	CHECKED
A	07.08.2015	Issued to Planning for discharge of Planning condition 80 Levels Plans	JP	DPD
B	10.06.15	Continuation line position altered	JP	DPD

SKETCH

Diaperer Wharf
 38 Graham Street
 London N1 8JK
 020 7336 7777
 forename.surname@pte.co.uk
 @ptearchitects
 www.pollardthomasedwards.co.uk

Pollard Thomas Edwards

PROJECT	JOB NO.	DRAWN	AUTHOR	SCALE	DATE
Abbey Area Phase 1 London	15-029	DPDCC	1:100@A1	June'15	

drawing number: **SK 005** revision: **A**