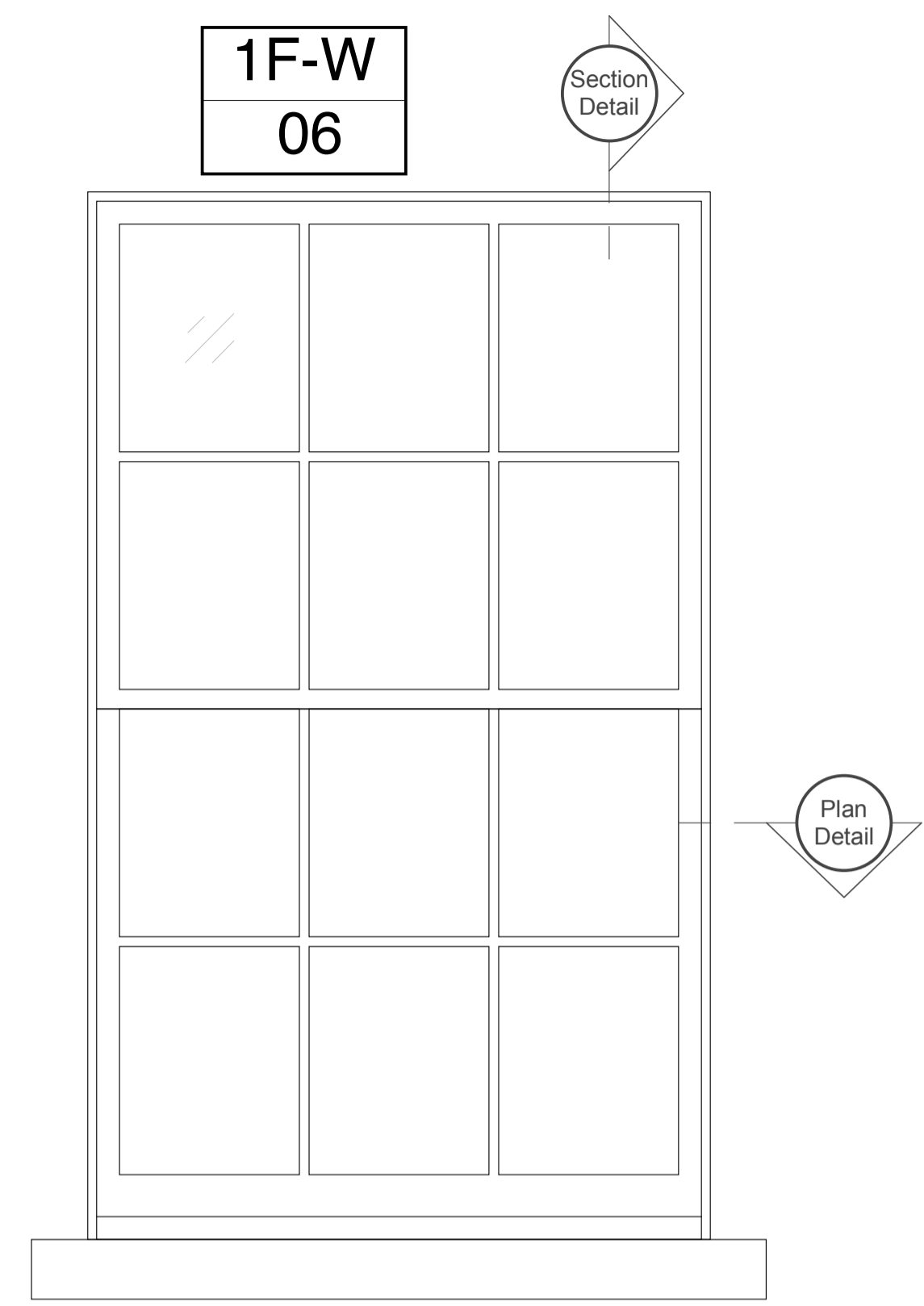
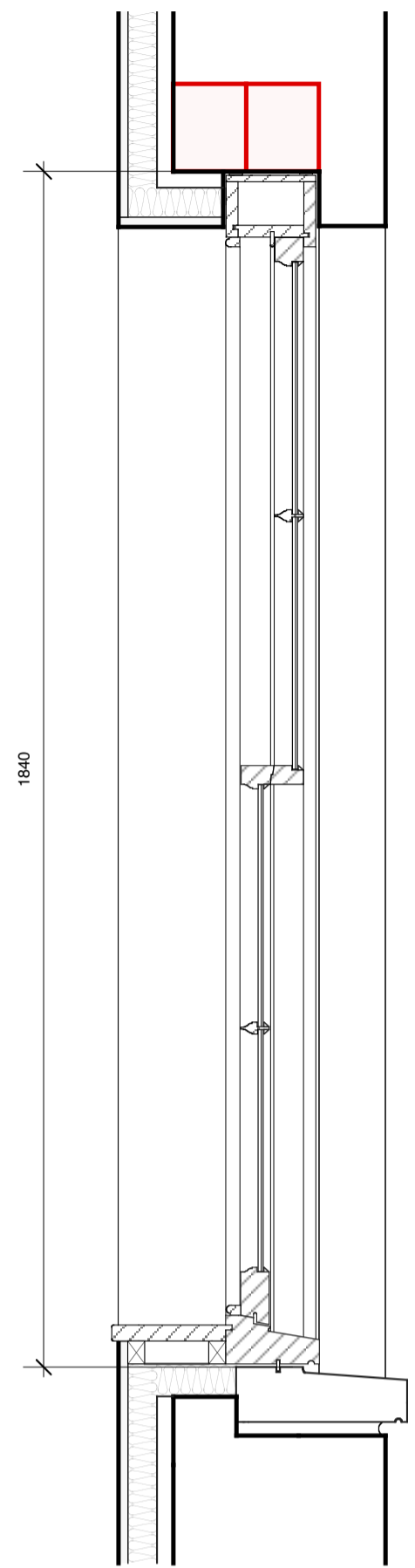


General Notes
 Do not scale from this drawing
 All dimensions to be verified on site
 To be read in conjunction with all relevant documents
 In the event of discrepancy notify the Architect immediately
 This document is copyright of Hugh Cullum Architects Ltd

Issue Status
 SK Information F Feasibility D Design
 P Permissions S Scheme T Tender
 C Construction E Existing Condition

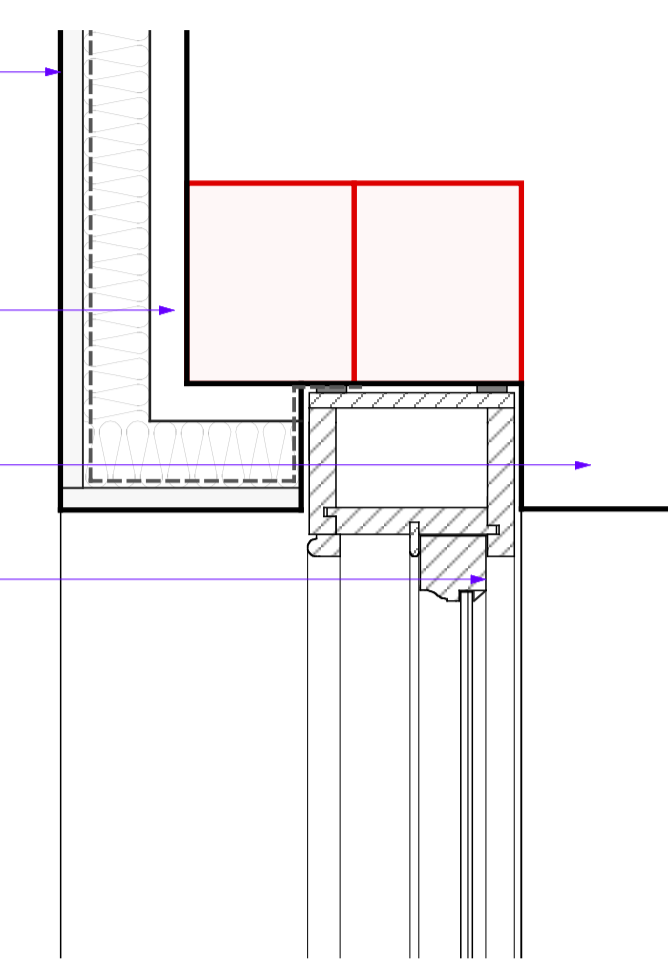
New Window Schedule

- 1F W-06 - 1375 x 790 Sash Window as detail
- 1F RW-07 - Sunsquare Skylight 1000x1000 Rooflight
- R RW-01 - Rooflight Company 685 x 985 Conservation Rooflight
- R RW-02 - Rooflight Company 532 x 780 Conservation Rooflight
- R RW-03 - Rooflight Company 532 x 780 Conservation Rooflight

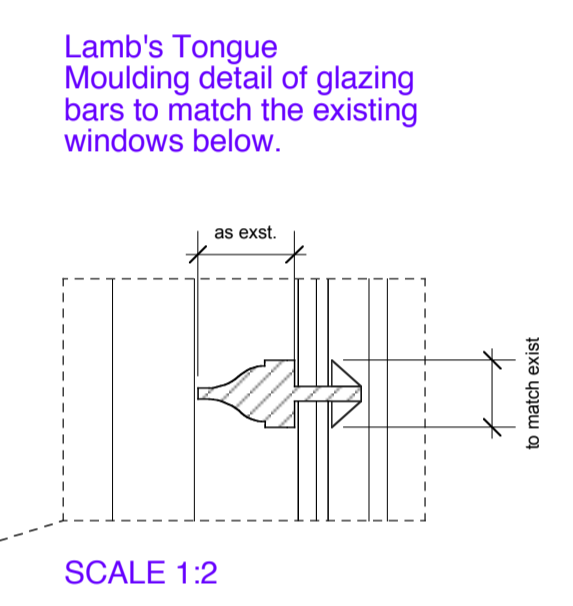
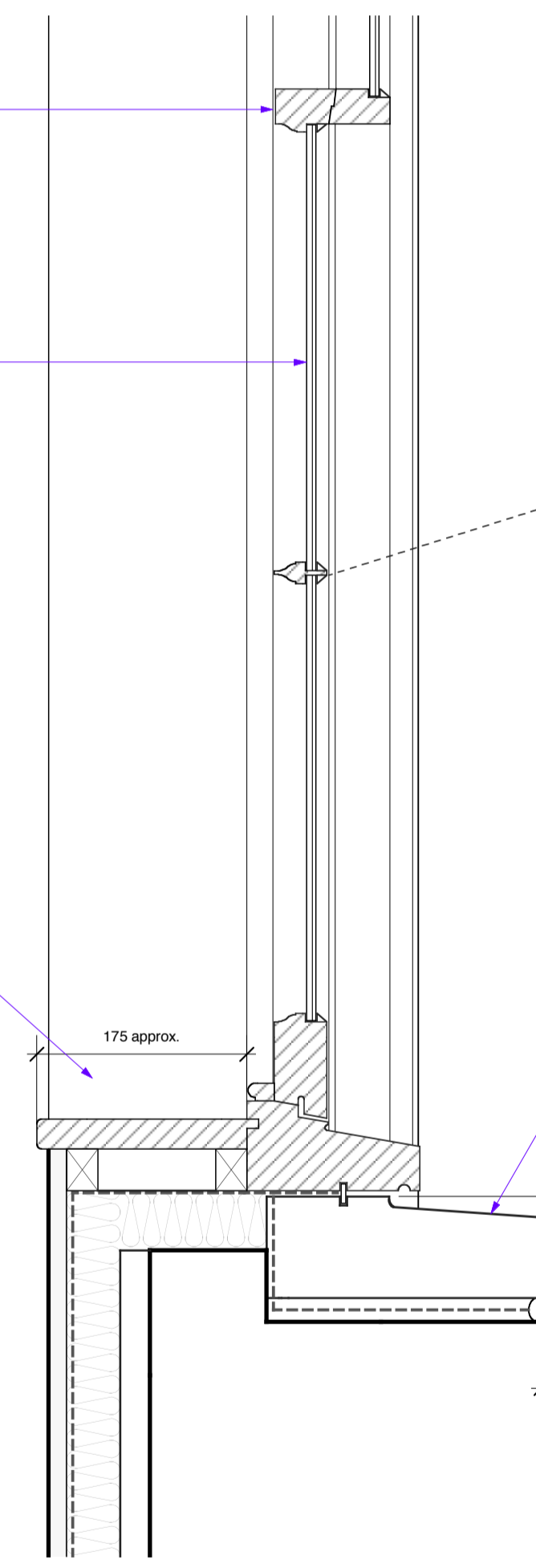


ELEVATION
 Window 1F W-06
 6 over 6 pane painted timber vertical sliding sash with HISTOGLASS MONO laminate glazing, white brush draught strips fitted to staff beads and solid timber window board fitted internally.
 Spacing of glazing bars width proportions to match existing windows below.

60mm GYROC THERMALINE SUPER dry-lining fixed over proprietary metal channel system
 New 110 x 140mm PCC lintels to S/E details
 New gauged brick flat arch
 Frame exposure to match existing

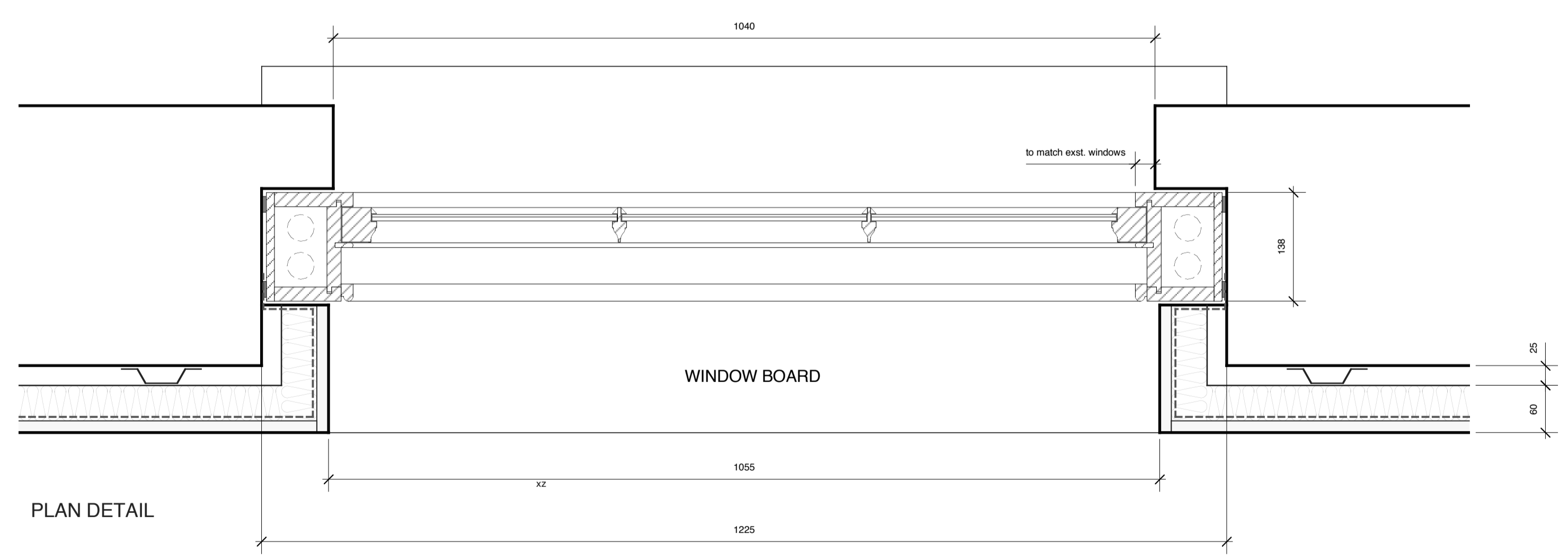


Glazing bars and meeting rail profile to match the equiv. existing sash windows of the main house
 Glazing to be HISTOGLASS MONO 7-9mm laminate cylinder glass



PCC sub-cill to falls (with drip and galvanised metal weather bar), painted to match existing, internal vapour barrier to lap over DPC.
 Sub-cill layed over 2 no. 10mm mortar joints with HYLOAD DPC between

25mm Internal window board with bullnose profile primd for painting on site



SECTION DETAIL

(A): Revised for Planning Application (11.08.2015/MS)
 Revision: Information (date/drawn by)