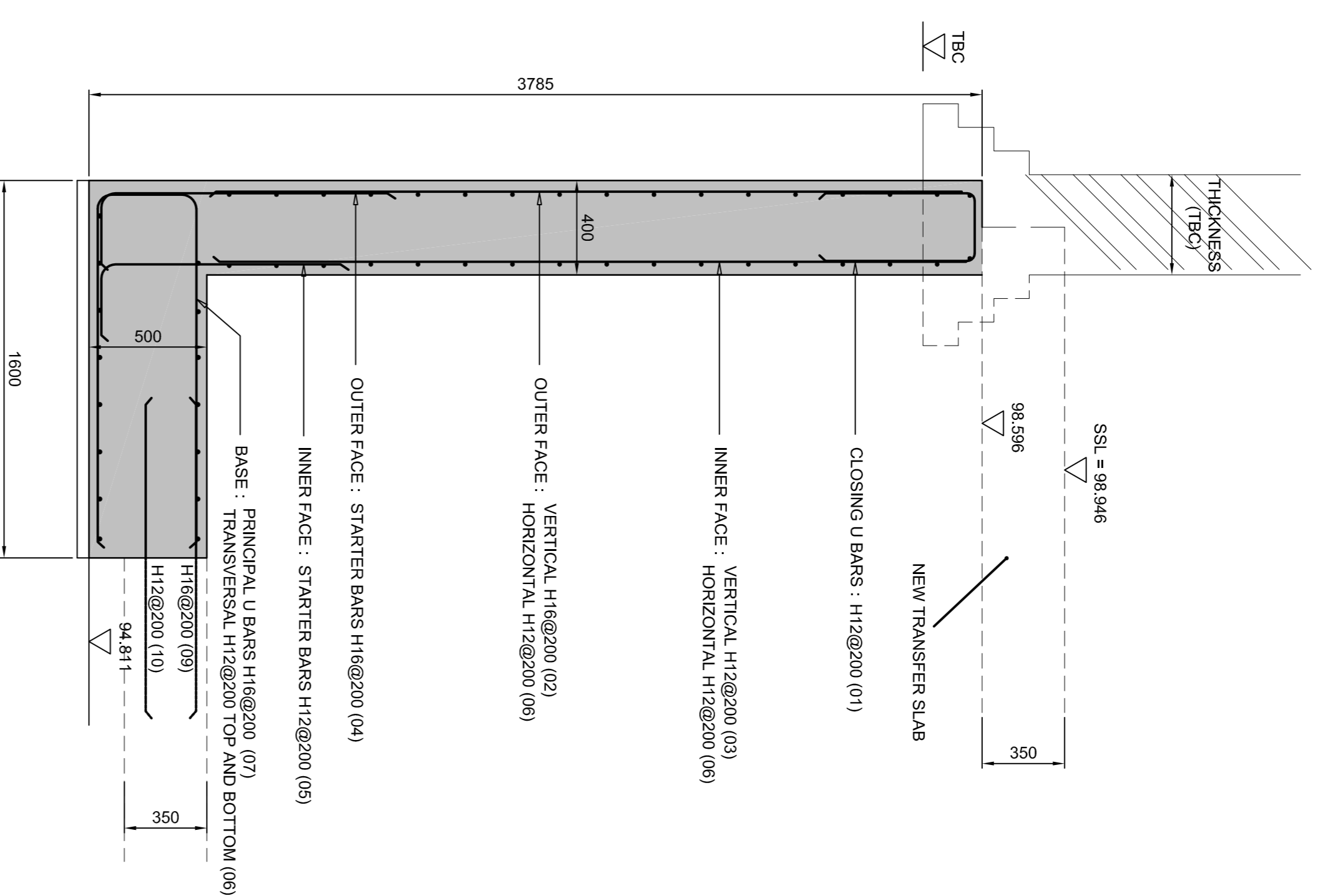
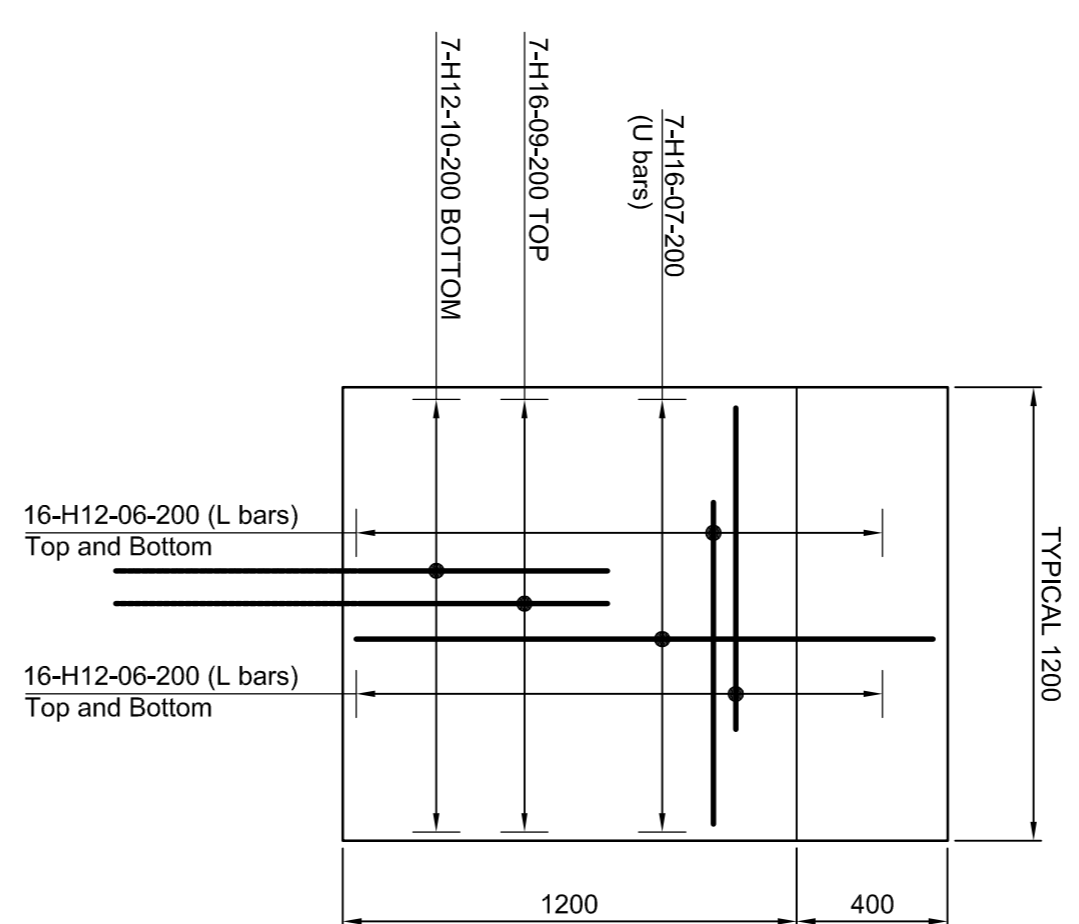


STEM BASE NOTES:

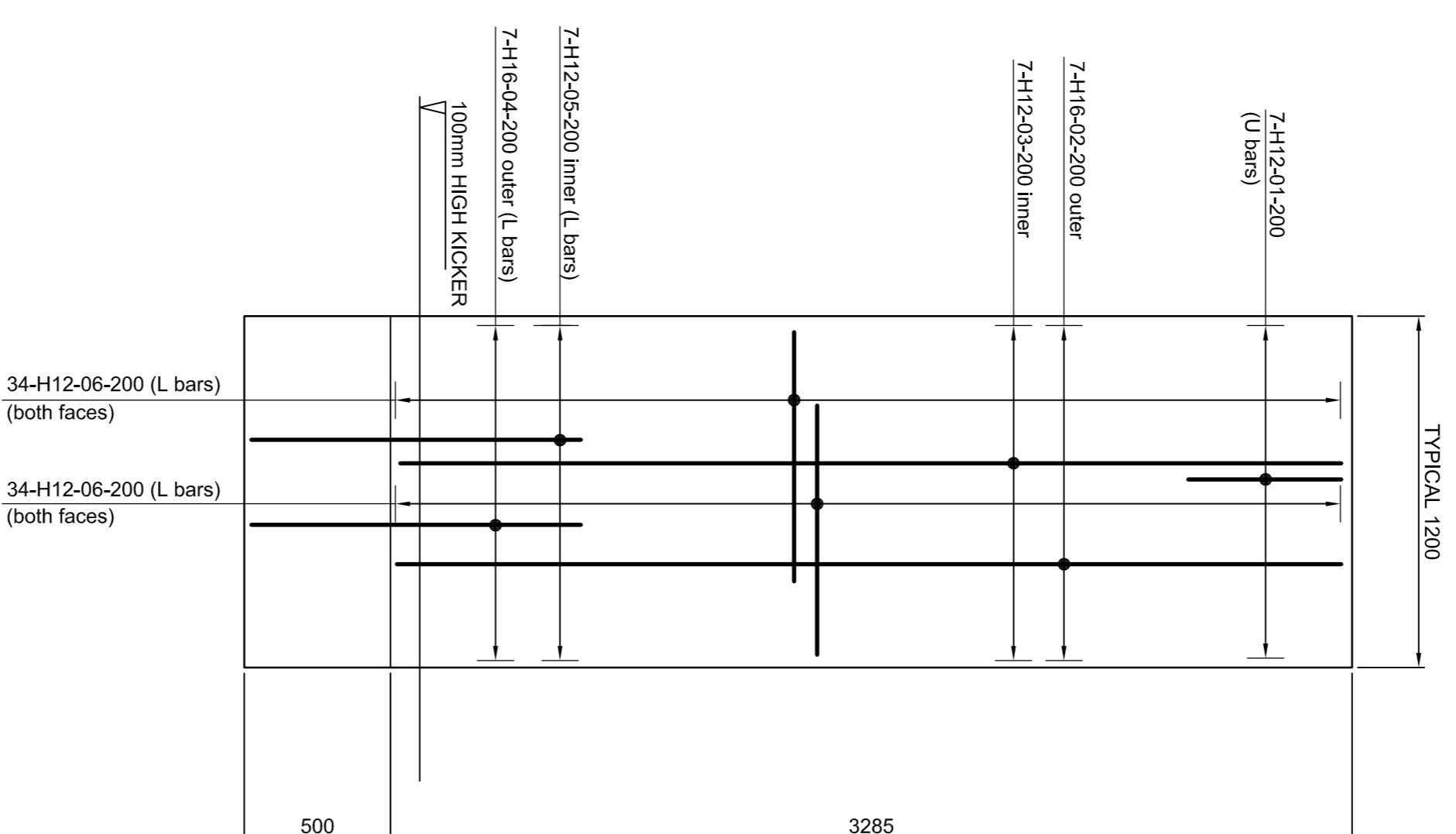
- CONCRETE TO BE RC35
- MINIMUM COVER TO REINFORCEMENT:
- TOP - 30mm
- BOTTOM - 50mm
- INTERNAL FACE) - 35mm
- EXTERNAL (SOIL) FACE - 75mm
- STANDARD LAP LENGTHS ARE:
- H12 - 500mm
- H16 - 650mm
- H20 - 800mm



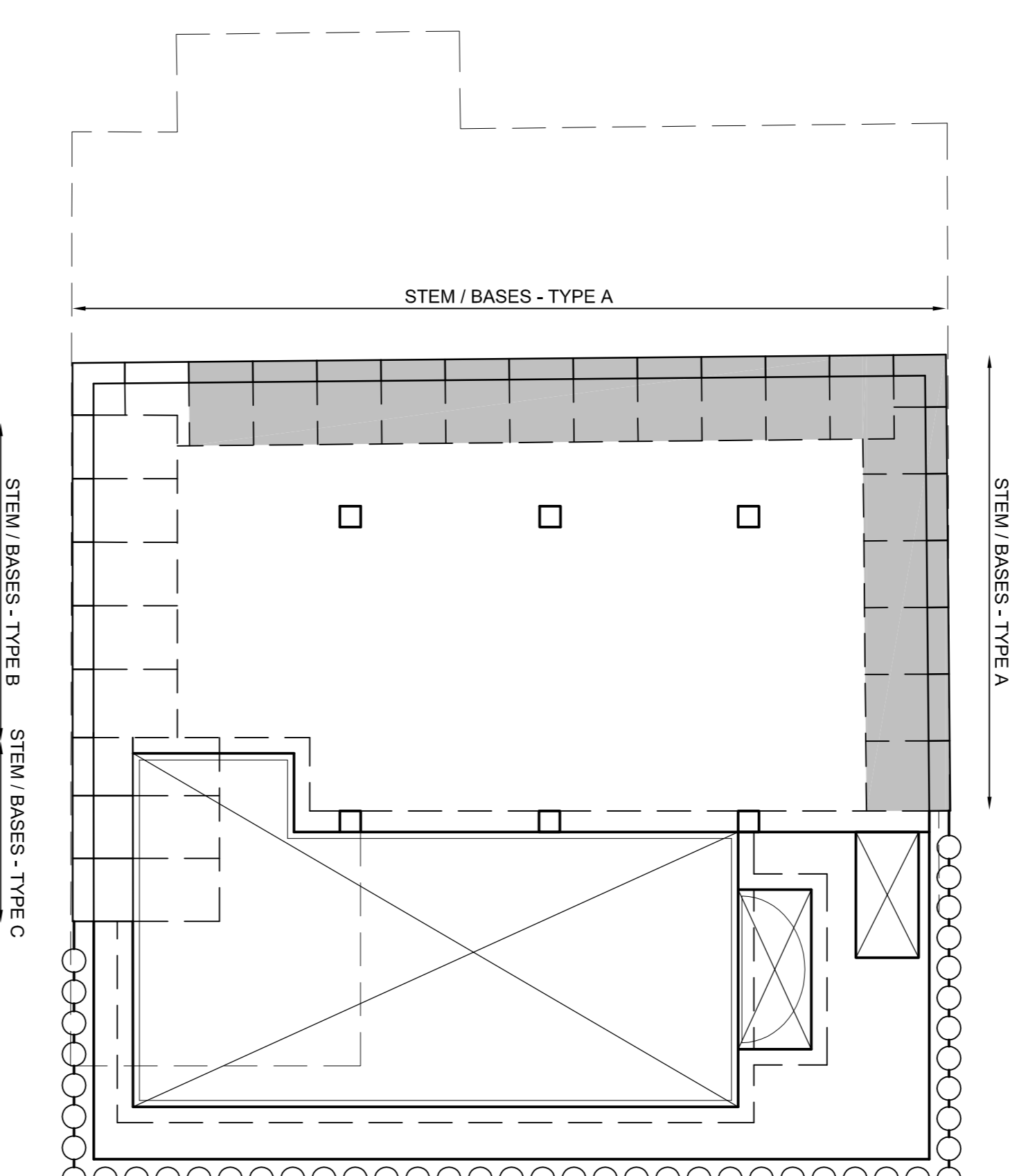
STEM / BASE - TYPE A
SCALE 1:20



TYPICAL PLAN OF TOE
REINFORCEMENT
UNDERPINS TYPE A - SCALE 1:20



INNER AND OUTER FACE TYPICAL ELEVATION
OF STEMS REINFORCEMENT
UNDERPINS TYPE A - SCALE 1:20



GENERAL PLAN OF UNDERPINS AT BASEMENTS LEVELS - SCALE 1:100

BAR BENDING SCHEDULE - UNDERPIN TYPE A

| Bar Mark | Type & Size | Number of Members | Number of Bars in each | Total No. of bars | Length of each bar (mm) | Shape Code | A (mm) | B (mm) | C (mm) | D (mm) | E/F (mm) |
|------------------------------|-------------|-------------------|------------------------|-------------------|-------------------------|------------|--------|--------|--------|--------|----------|
| BASEMENT UNDERPINNING | | | | | | | | | | | |
| 01 | H12 | 1 | 7 | 7 | 1275 | 21 | 500 | 320 | (500) | | |
| 02 | H16 | 1 | 7 | 7 | 3250 | 00 | 3250 | | | | |
| 03 | H12 | 1 | 7 | 7 | 3250 | 00 | 3250 | | | | |
| 04 | H16 | 1 | 7 | 7 | 1425 | 11 | 1150 | | (300) | | |
| 05 | H12 | 1 | 7 | 7 | 1275 | 11 | 1000 | | (300) | | |
| 06 | H12 | 1 | 100 | 100 | 1300 | 11 | 825 | | (500) | | |
| 07 | H16 | 1 | 7 | 7 | 3350 | 21 | 1500 | 420 | 1500 | | |
| 09 | H16 | 1 | 7 | 7 | 1275 | 11 | 650 | | (650) | | |
| 10 | H12 | 1 | 7 | 7 | 975 | 11 | 500 | | (500) | | |

All dimensions are in accordance with BS8666

| Rev | Description | By | App | Date |
|-----|-------------------------|----|-----|----------|
| A | ISSUED FOR CONSTRUCTION | JO | MJ | 19.08.14 |

ABBEY PYNFORD
 Abbey Pynford Geo Structures Ltd
 57/59 Market Road
 Hemel Hempstead, Herts HDX
 Tel: 01462 420000
 Fax: 01462 420001
 Web: www.abbeypynford.co.uk

Project:
 69 REDINGTON ROAD
 LONDON
 NW3 7RP

Drawn: JHC
 REINFORCEMENT ARRANGEMENT DRAWING
 BASEMENT STEM/BASE - TYPE A

| Scale at A1 | Drawn By | Date | Checked By | Date | Approved By | Date |
|--------------|----------|-----------|-------------|-----------|-------------|------|
| 1:20 - 1:100 | JO | SEPT 2014 | MJ | SEPT 2014 | | |
| Project No. | Office | Type | Drawing No. | Revision | | |
| GA19787 | HH | GS | 101 | A | | |

APPROVAL INFORMATION TENDER CONTRACT CONSTRUCTION