



Remove lino, stain and polish existing floorboards.  
Strip off wall paper and paint, cavity drain damp proofing membrane fitted with special sealed mushroom and cover with drylining plaster finish. Apply 803 Newtonite or Delta membrane, which is deemed reversible

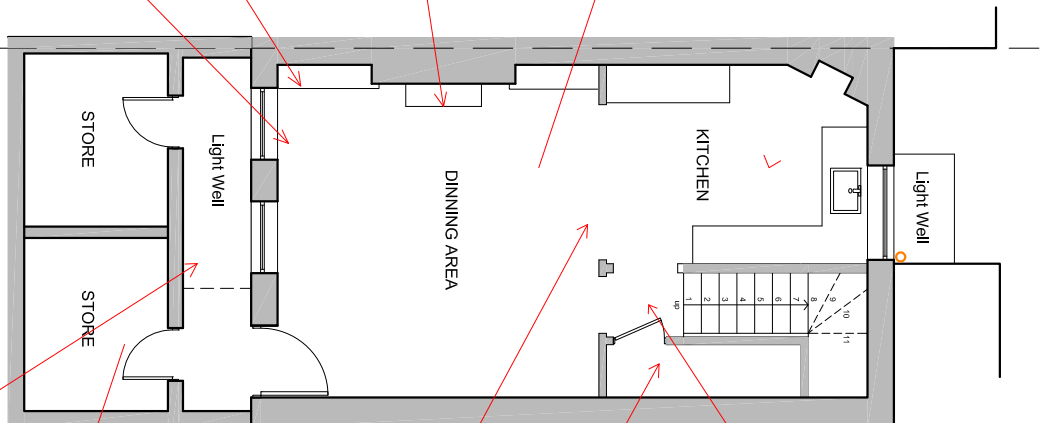


Retain existing fireplace, gas pipe and power socket removed and the timber surround overhauls

Alcove lining to be retained, plywood shelves and services to be removed



Overhaul and repair existing timber sash windows and panel door.  
Strip, stain and polish existing floorboards.



EXISTING BASEMENT PLAN



Store under stairs retained temporary shelving removed door retained and overhauls.



Book shelf removed

Existing vaults to be lined with cavity drain damp proofing membrane using Delta or 803 Newtonite and covered with vapour board



Strip and repair existing wooden staircase and balustrade.



Retain and repair existing lath and plaster ceiling from above.



Retain & overhaul metal railings around existing lightwell, replace missing metal slim arrowhead to match existing. All external features are to be retained and overhauled

# Archetype

Architects Planners Designers

121 Gloucester Place, London W1U  
Tel: 020 7486 3866 Fax: 020 7486 3886  
e-mail: [architect@archetype.org.uk](mailto:architect@archetype.org.uk)

Project:  
18 GROVE TERRACE  
LONDON  
NW5 1PH

Drawing Title:  
BASEMENT CONDITION SCHEDULE

Drawn: JUL 15 Date: JUL 15 Scale: 1:100 @ A3

Plan No. 1049 (10) -01  
Status:  Preliminary drawing  
 Tender drawing  
 Working drawing  
CAD Ref: -