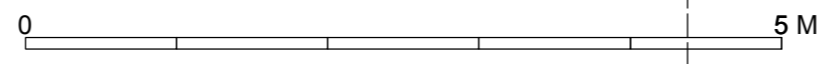


**REVISED**  
**07.08.2015**



Drainpipe flue & bathroom toilet extracts hidden between chimney & rooflight.

Gas fire flue terminus & lightning protection rod hidden between chimney & main rooflight.

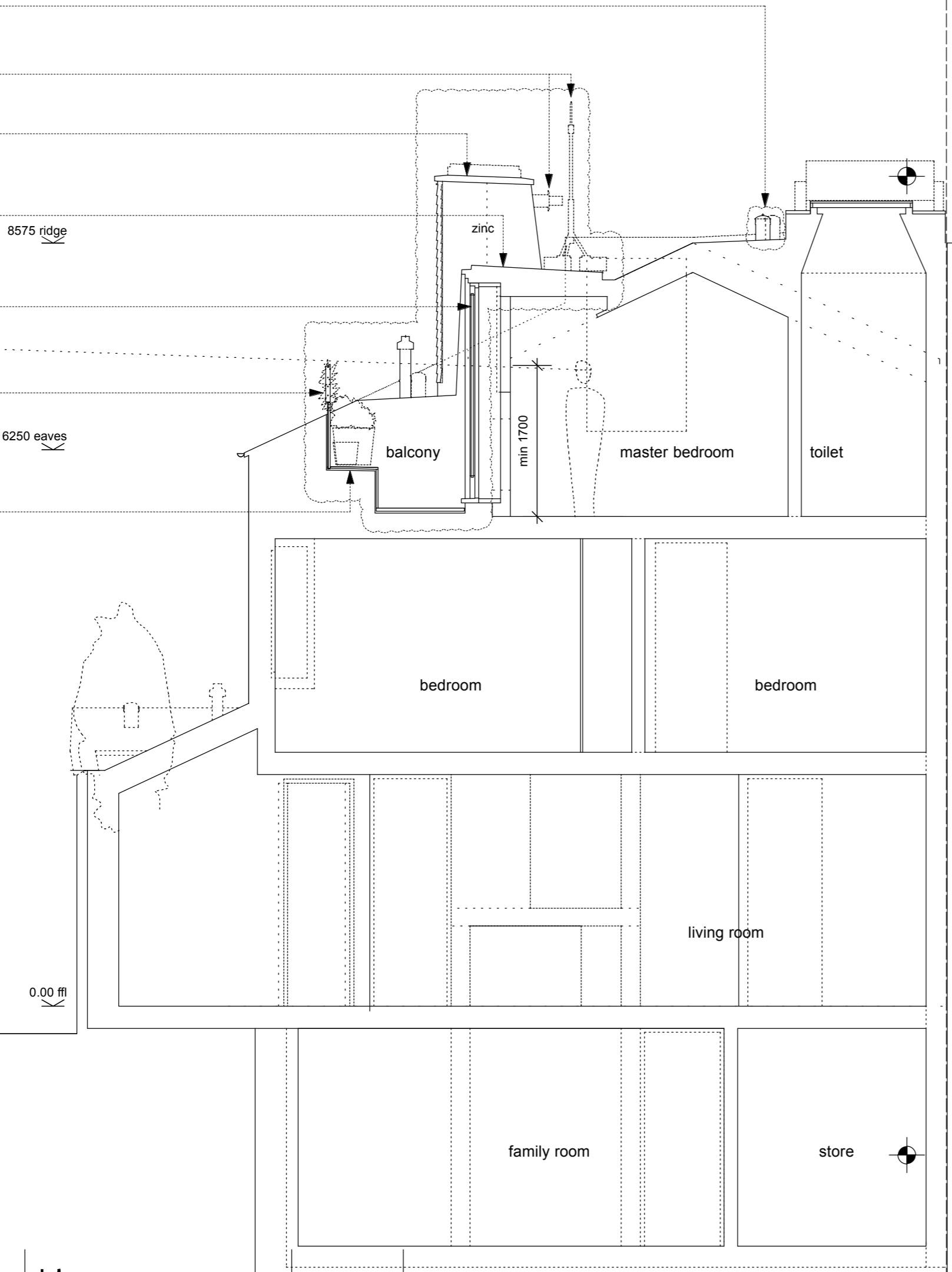
See west elevation & section A for details on minor alterations to chimney.

Dormer drains back to main roof so as to avoid visually bulky guttering along the leading edge of the dormer eaves.

Window omitted & glazing reduced in size to lessen heat loss & gains in line with Building Regulation & Code for Sustainable Homes targets (see also west elevation).

Screen to support planters formed with zinc frame & stainless steel horizontal wires.

Width of balcony reduced (as part of the reduction to dormer glazing). Raised planting area added along outer edge for pots to support climbers on privacy screen to lessen risk of overlooking.



west

G

H

**E**