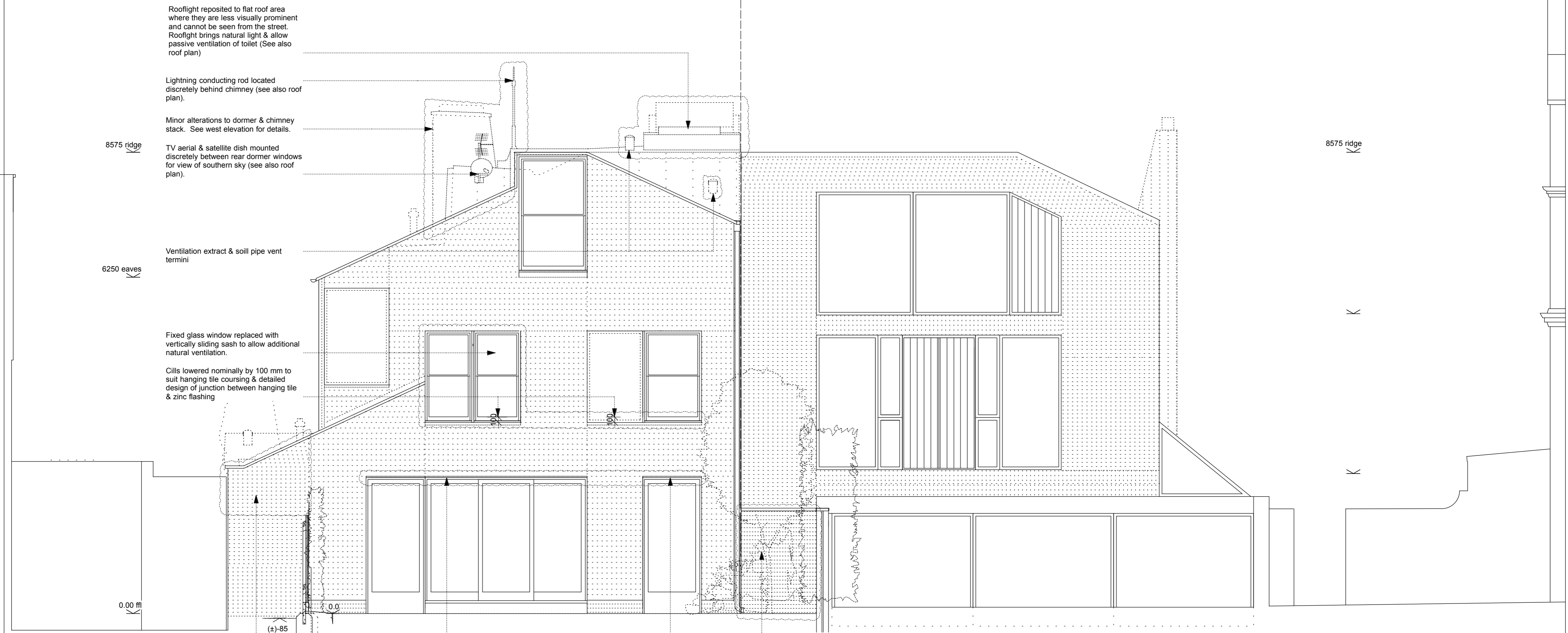
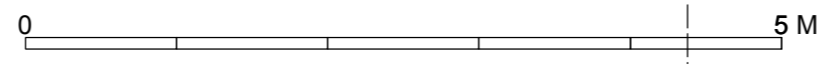


REVISED
07.08.2015



Rooflight repositioned to flat roof area where they are less visually prominent and cannot be seen from the street. Rooflight brings natural light & allow passive ventilation of toilet (See also roof plan)

Lightning conducting rod located discretely behind chimney (see also roof plan).

Minor alterations to dormer & chimney stack. See west elevation for details.

TV aerial & satellite dish mounted discretely between rear dormer windows for view of southern sky (see also roof plan).

Ventilation extract & soil pipe vent termini

Fixed glass window replaced with vertically sliding sash to allow additional natural ventilation.

Cills lowered nominally by 100 mm to suit hanging tile coursing & detailed design of junction between hanging tile & zinc flashing

Hanging tile to high level omitted & brick face of the boundary wall under carried up to eaves level to maintain flush relation of construction to the demise line.

Small (75 mm) projecting grey zinc cill over windows for safety & to lessen risk of possible future damage to rooflight under from falling or broken hanging tile.

Single leaf of red brickwork to align with adjacent brick wall & mask black brick to back elevation of 48c Netherhall Gardens.

8575 ridge

6250 eaves

0.00

(±)-85

0.00

8575 ridge

west

G

H

B

east

South