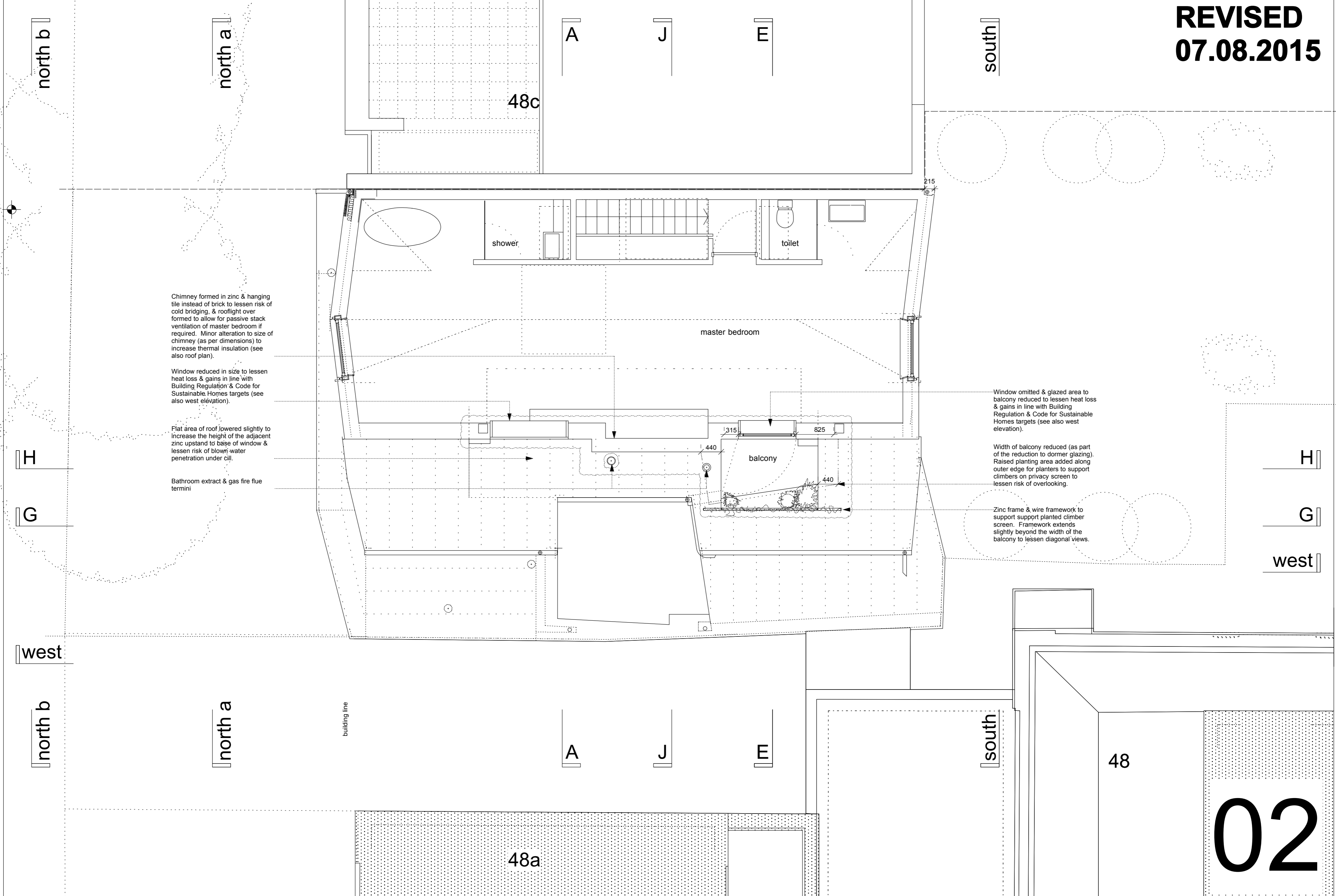


0 5 M

07.08.2015
 scale 1:50
 prints at A2

REVISED
07.08.2015



Chimney formed in zinc & hanging tile instead of brick to lessen risk of cold bridging, & rooflight over formed to allow for passive stack ventilation of master bedroom if required. Minor alteration to size of chimney (as per dimensions) to increase thermal insulation (see also roof plan).

Window reduced in size to lessen heat loss & gains in line with Building Regulation & Code for Sustainable Homes targets (see also west elevation).

Flat area of roof lowered slightly to increase the height of the adjacent zinc upstand to base of window & lessen risk of blown water penetration under sill.

Bathroom extract & gas fire flue termini

Window omitted & glazed area to balcony reduced to lessen heat loss & gains in line with Building Regulation & Code for Sustainable Homes targets (see also west elevation).

Width of balcony reduced (as part of the reduction to dormer glazing). Raised planting area added along outer edge for planters to support climbers on privacy screen to lessen risk of overlooking.

Zinc frame & wire framework to support support planted climber screen. Framework extends slightly beyond the width of the balcony to lessen diagonal views.

02