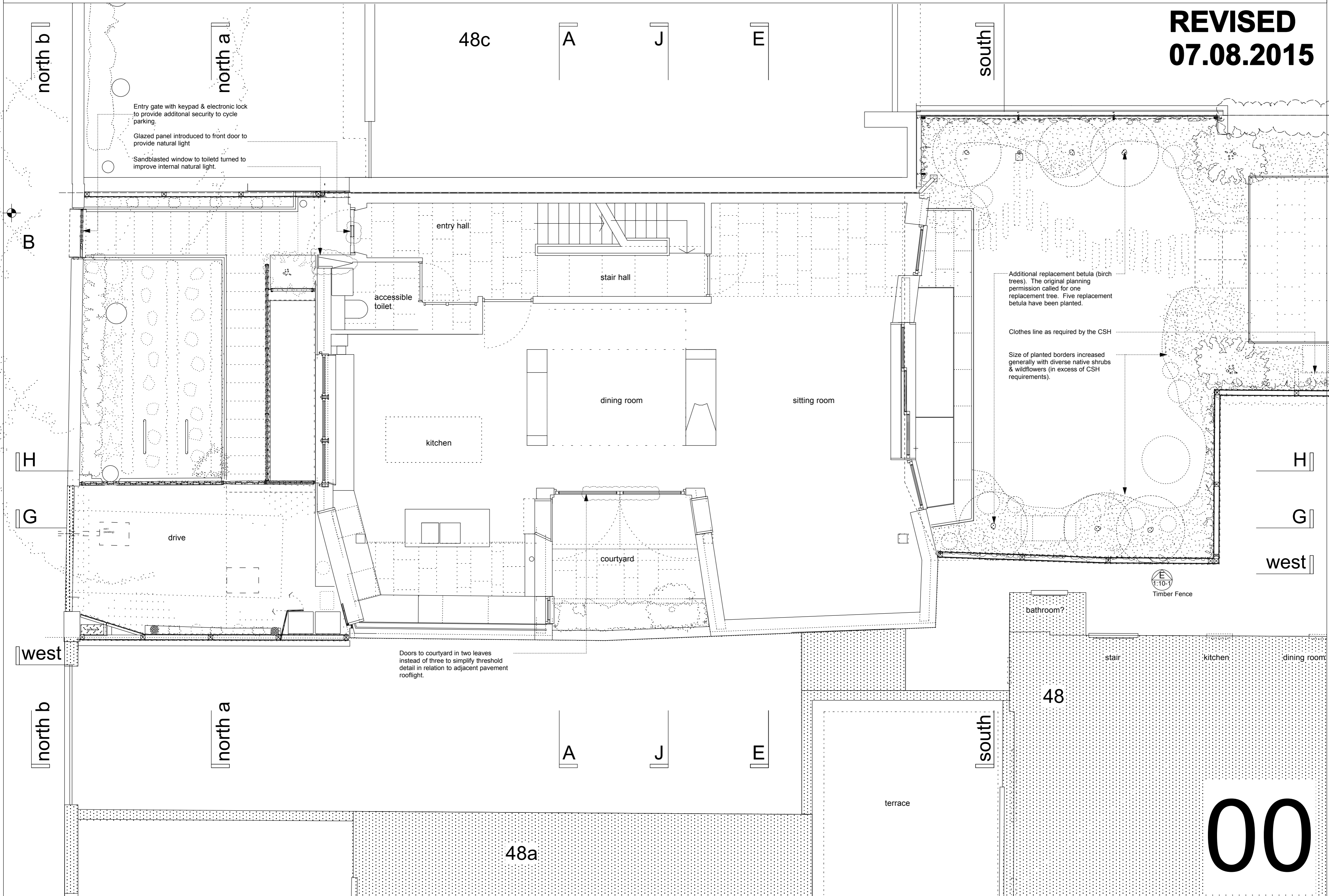


**REVISED**  
**07.08.2015**



Entry gate with keypad & electronic lock to provide additional security to cycle parking.  
 Glazed panel introduced to front door to provide natural light  
 Sandblasted window to toilet turned to improve internal natural light.

Additional replacement betula (birch trees). The original planning permission called for one replacement tree. Five replacement betula have been planted.  
 Clothes line as required by the CSH  
 Size of planted borders increased generally with diverse native shrubs & wildflowers (in excess of CSH requirements).

Doors to courtyard in two leaves instead of three to simplify threshold detail in relation to adjacent pavement rooflight.

1:10-1  
 Timber Fence

**00**