

Glazed curtain wall

Metal railing painted black

Cast stone coping

Yellow London Stock brick walling

Brick window arch to match 10a Belmont Street.

Double glazed sustainable timber doors painted white to match 10a Belmont Street.

Metal railing painted black

Staircase glazing to be from recycled glass.

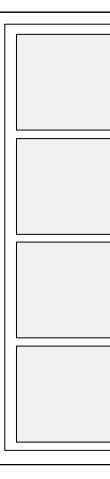
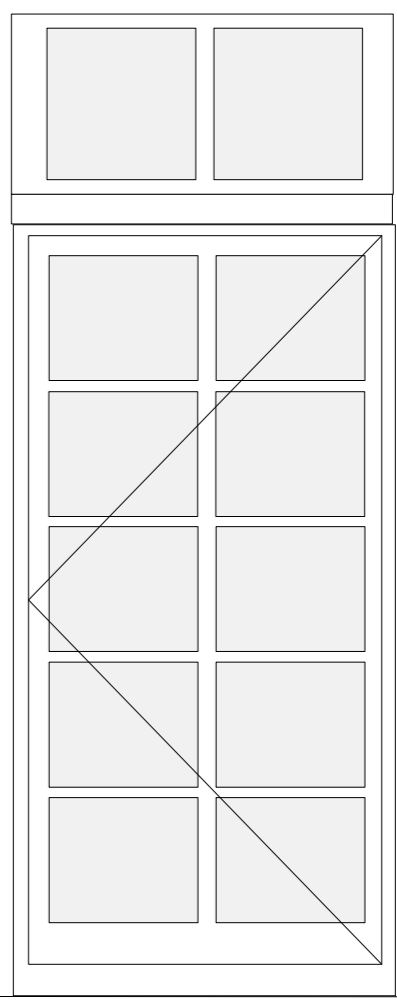
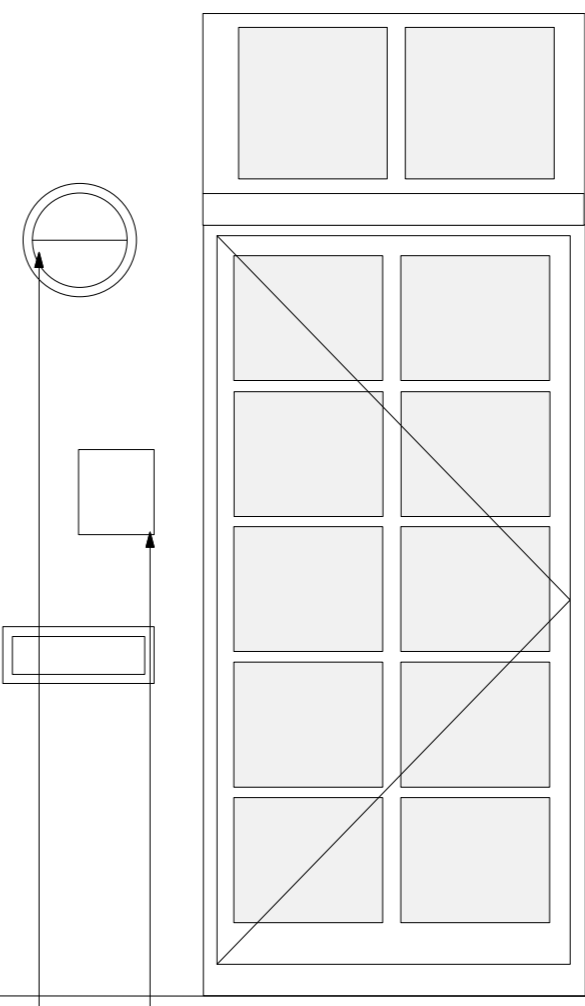
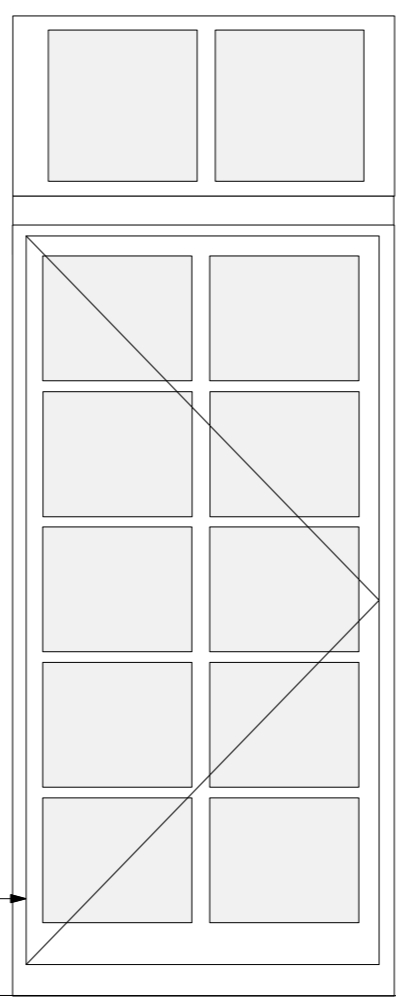
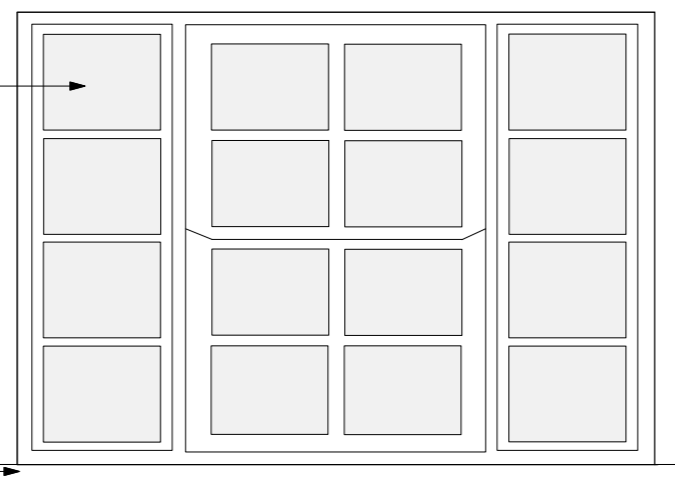
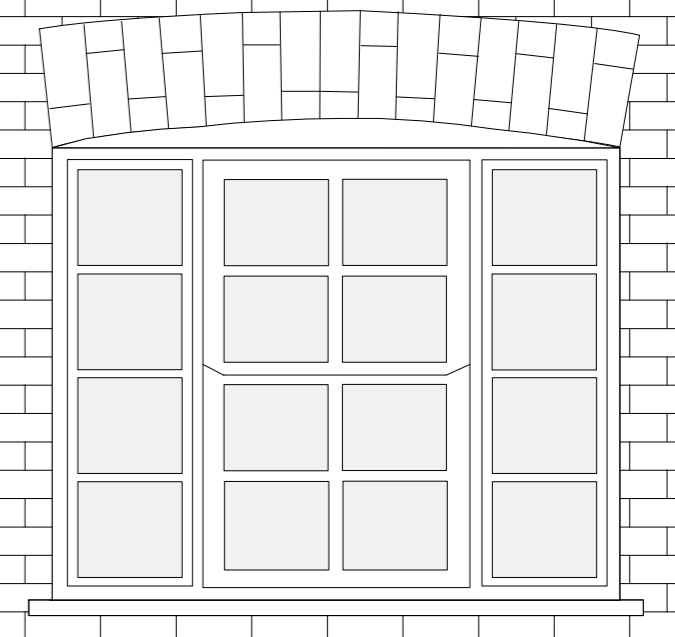
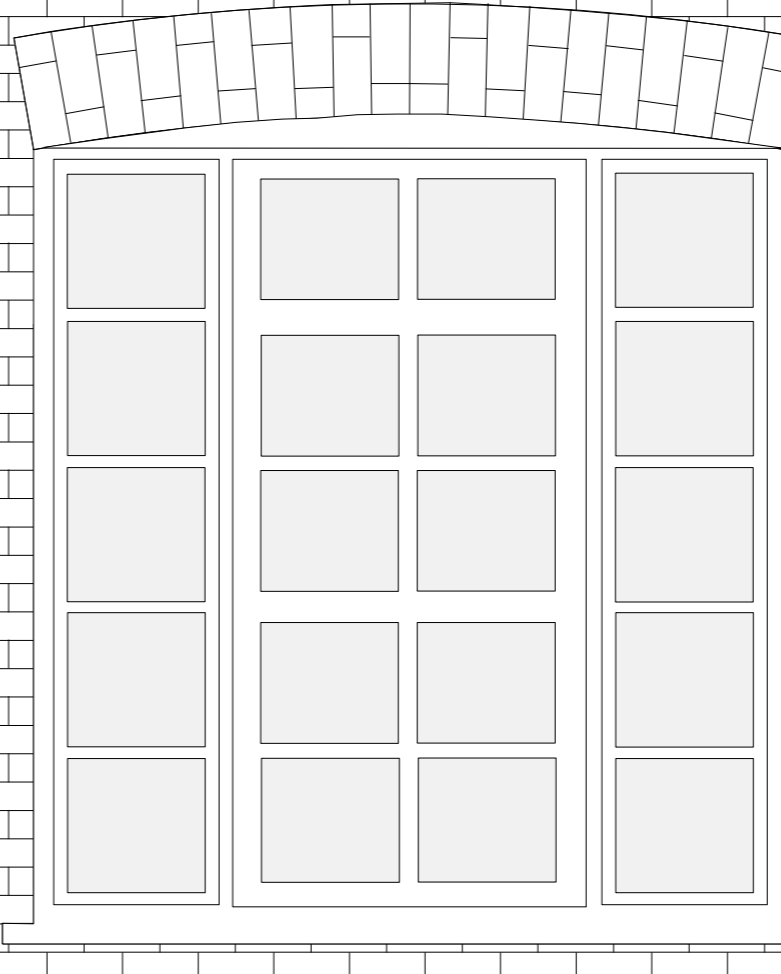
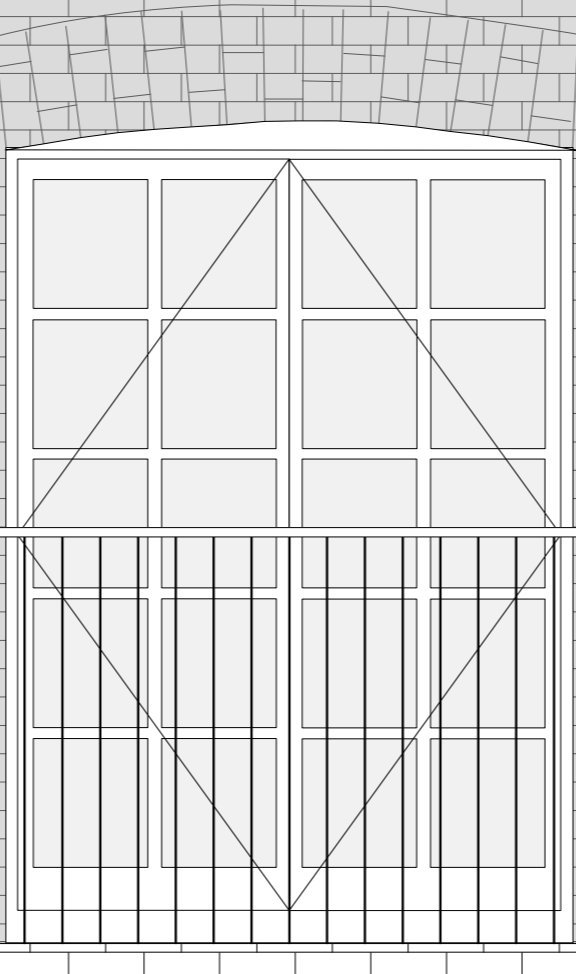
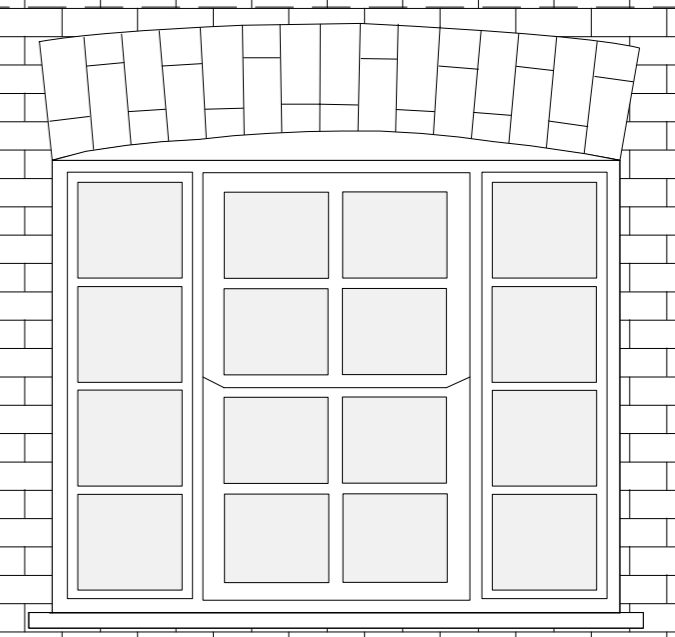
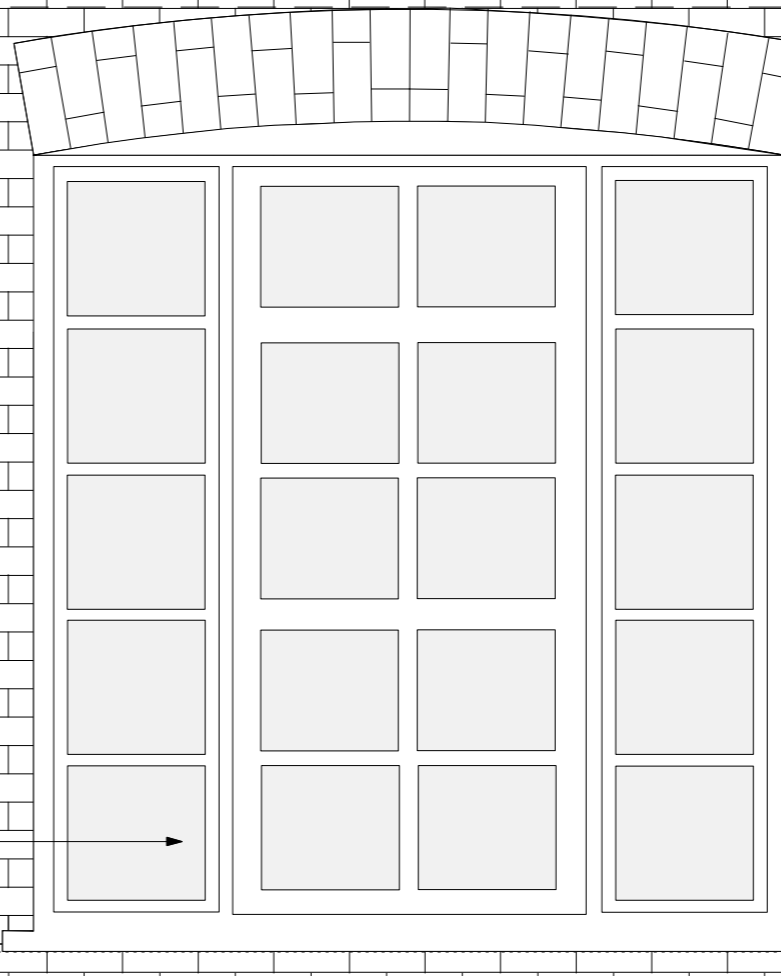
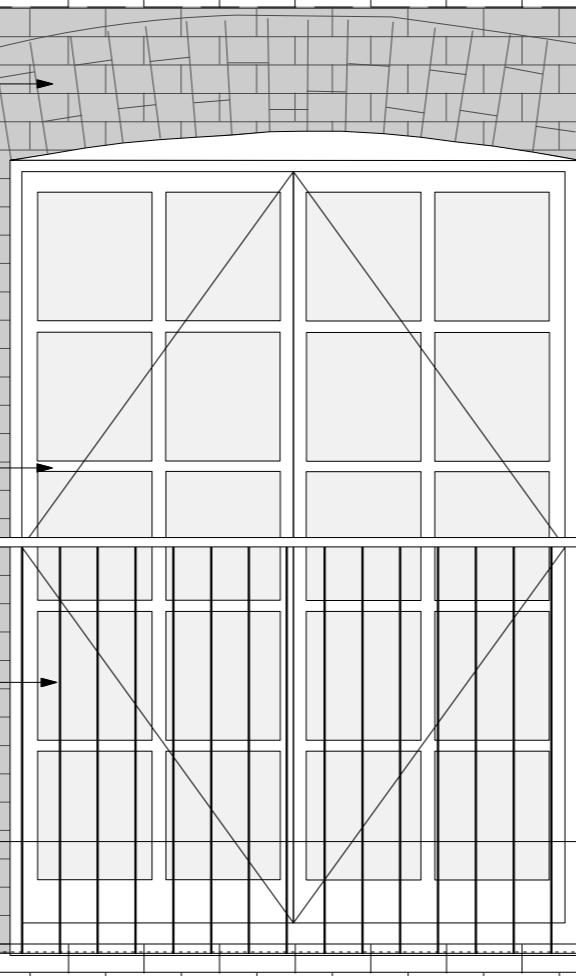
Double glazed (outer pane to be 6mm laminated glass) sustainable timber window painted white to match 10a Belmont Street.

Painted white lime render.

Painted white concrete cills.

Metal secure post box painted white. In accordance to BS PAS 24-2012 to prevent entry into the building.

Double glazed (outer pane to be laminated glass) sustainable timber doors painted white to match 10a Belmont Street.



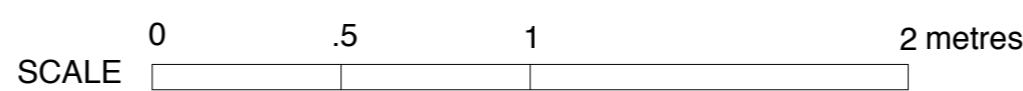
Intercom to be audio & video with no trades button

Bulkhead light fitting to be of a white metal finish

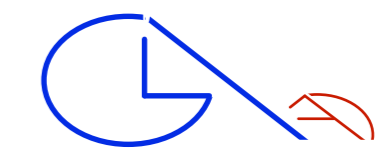
Intercom to be audio & video with no trades button

Intercom to be audio & video with no trades button

PROPOSED FACADE DETAIL



NOTE: Exterior lighting to be BS 5489 with no bollard lighting. All communal & residential doors to be BS PAS 24-2012 or other acceptable enhanced security standard. All openings and accessible windows to be BS PAS 24-2012 with p1a laminated glazing, or other acceptable enhanced security standard.



GLA Architecture and Design Suite T, 25 Horsell Road, Highbury, London N5 1XL T 020 7700 2916 F 020 7700 2933 E g@glad.co.uk Revision - A2: 03.08.15; dk: Post box note amended. Exterior lighting, intercom, doors & openings notes added. Revision - A1: 02.07.12; ga: Light fittings, secure post boxes, laminated glass to ground floor windows & doors added.

Table with client information: S. ASPRIS & SON LTD., Main Contractor, Project: PROPOSED RESIDENTIAL & COMMERCIAL UNITS TO 17 & 19 FERDINAND STREET, LONDON NW1 8EU, Drawing Title: PROPOSED FACADE DETAIL, Scale: 1:20 @ A1, 1:40 @ A3, Date: July 2012, Drawing No: 1002, Rev: A2, and drawing status legend.