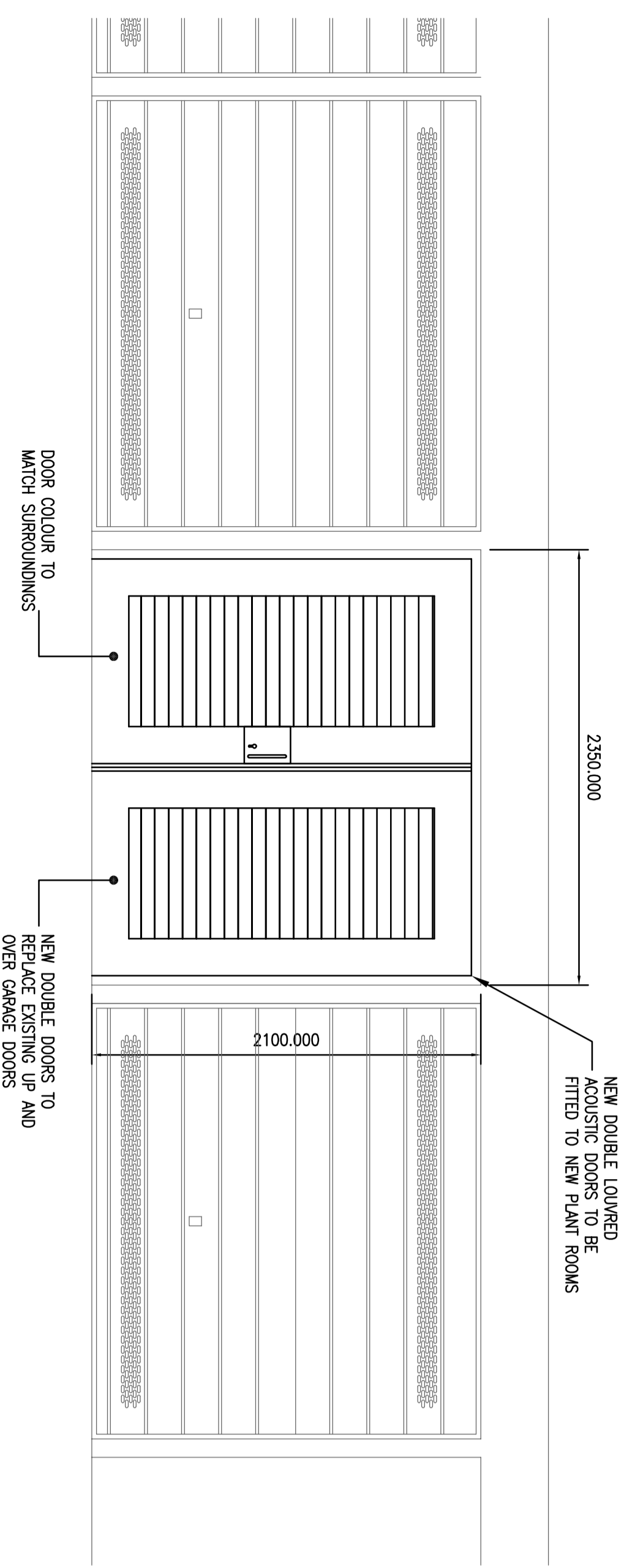
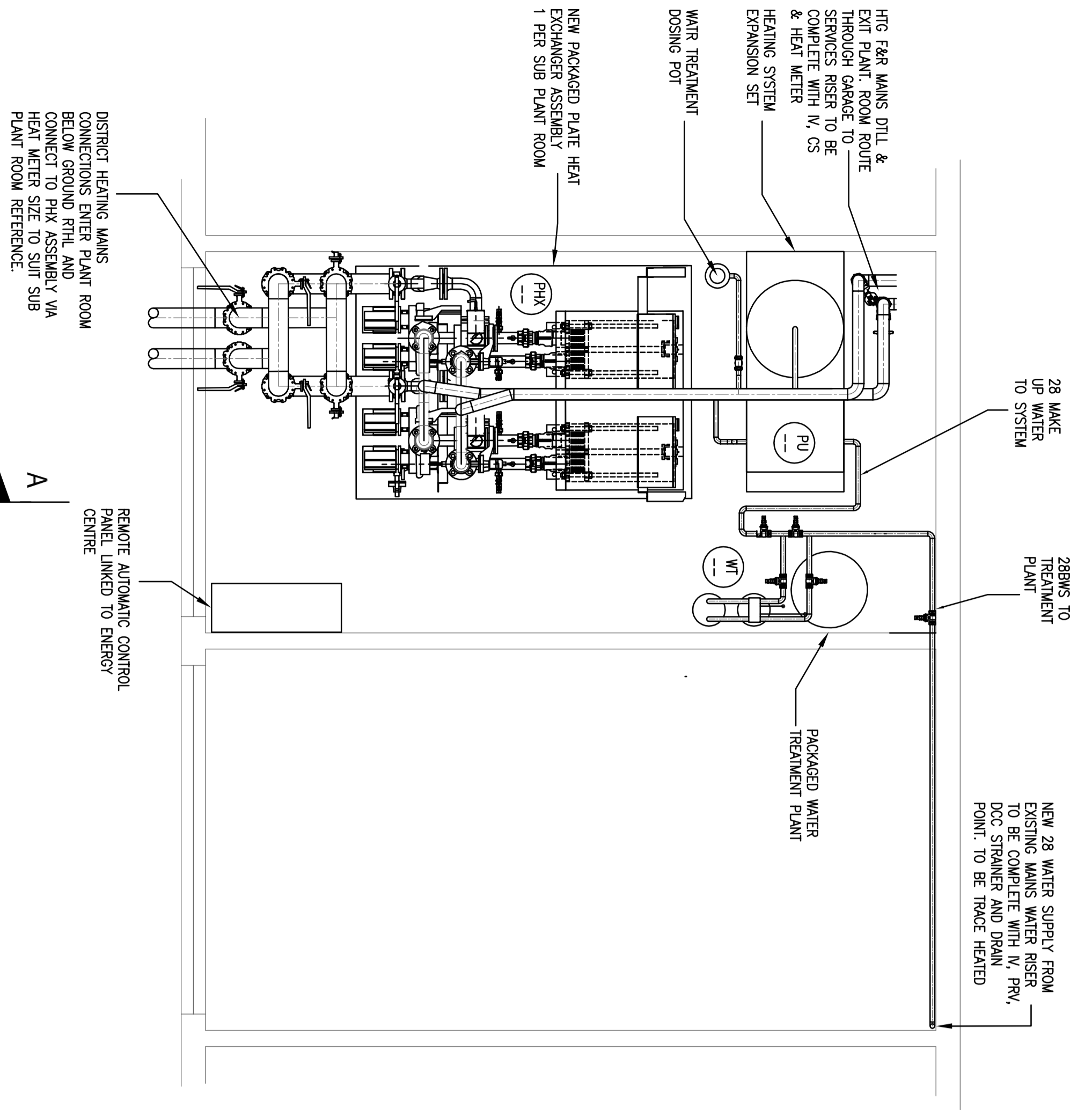




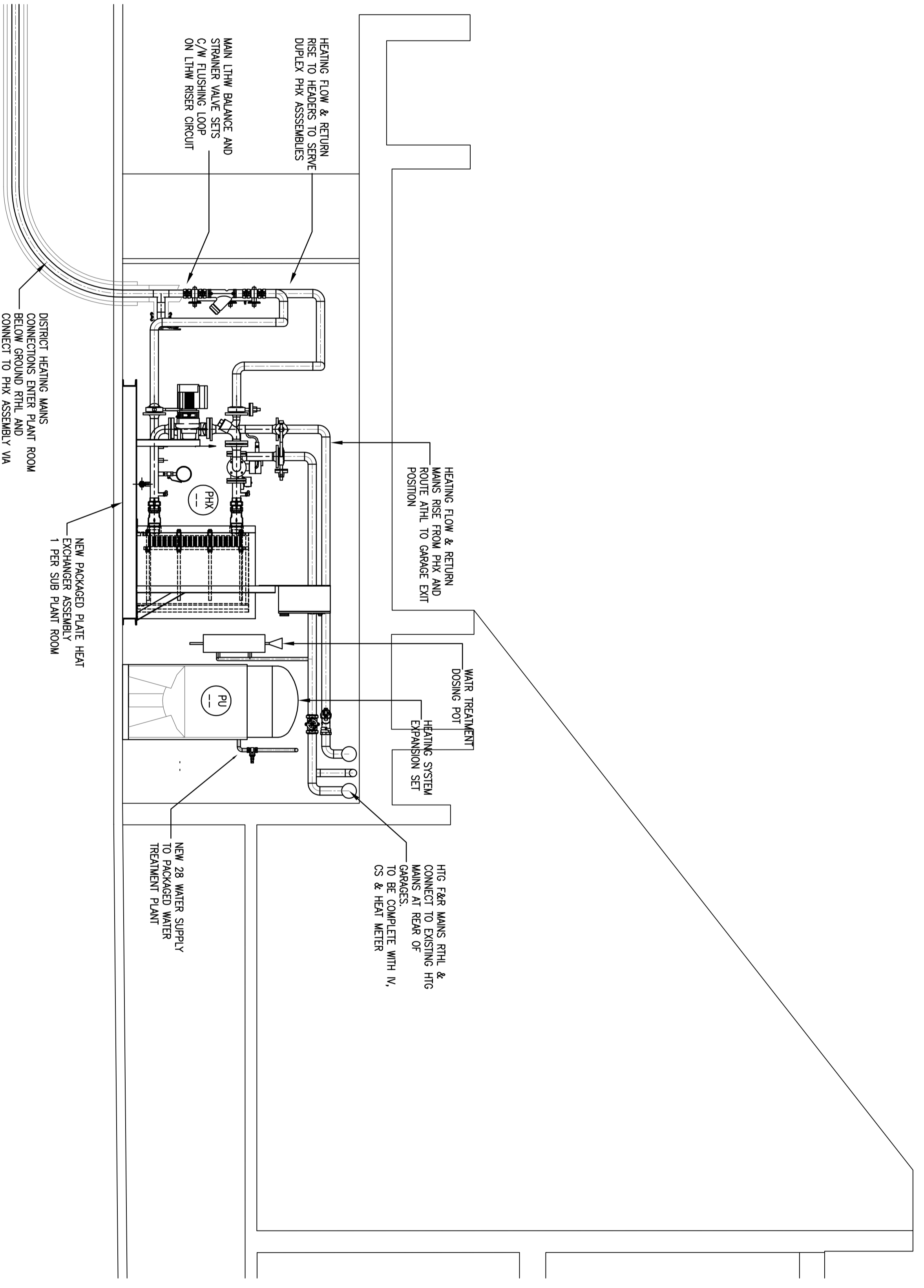
EXISTING GARAGES



ELEVATION ON NEW DOUBLE LOUVERED DOOR TO GARAGES



PLAN ELEVATION ON NEW SUB PLANT ROOM SERVING HEATING SERVICES



CROSS SECTION THROUGH SUB PLANT ROOM HEATING INSTALLATION

- LEGEND**
- ISOLATION VALVE
 - REGULATING VALVE
 - 3 PORT CONTROL VALVE
 - 2 PORT CONTROL VALVE
 - COMMISSIONING SET
 - HEAT METER
 - STANDARD VALVE
 - WATER TREATMENT
 - REGULATION PUMP
 - PRESSURISATION UNIT
 - COMMISSIONING SET
 - WMS WATER SERVICE
 - TW TREATED WATER
 - HFC HEATING
 - P PRESSURE GAUGE
 - T TEMPERATURE GAUGE
 - HL HW HIGH LIMIT SWITCH
 - HL HIGH LIMIT SENSOR
 - REVISION SYMBOL
- NOTES**
- 1 THIS DRAWING IS TO BE READ IN CONJUNCTION WITH THE MECHANICAL SPECIFICATION AND ALL OTHER ASSOCIATED MECHANICAL, ELECTRICAL AND ARCHITECTURAL DOCUMENTS.
 - 2 DO NOT SCALE FROM THIS DRAWING - USE PROVIDED DIMENSIONS ONLY. UNLESS OTHERWISE NOTED ALL DIMENSIONS ARE GIVEN IN MILLIMETERS. ALL WORK ON THE FABRICATION OF ANY ITEM.
 - 3 THE CONTRACTOR SHALL VISIT THE SITE DURING THE TENDER PERIOD TO ASCERTAIN THE EXTENT AND COMPLETENESS OF THE WORKS.
 - 4 LOCATIONS SHOWN ARE APPROXIMATE ONLY. FINAL POSITIONS TO BE DETERMINED ON SITE.
 - 5 THE MAKE OF THE NEW PIPING INSTALLATION SHALL BE CONFIRMED BY THE CONTRACTOR TO THE EXISTING WMS SYSTEMS.
 - 6 SERVICE LOCATIONS SHOWN ARE APPROXIMATE ONLY. ACTUAL POSITIONS ARE TO BE DETERMINED ON SITE.
 - 7 THE EXPANDERS SHALL SETBACK ALL PIPework ROUTES BEFORE COMMENCEMENT ON SITE.
 - 8 INSTALL VENTS AND DRAINCOCKS ON ALL SYSTEM HIGH AND LOW POINTS.
 - 9 LOCATIONS SHOWN ARE APPROXIMATE ONLY. FINAL POSITIONS TO BE DETERMINED ON SITE.
 - 10 VENTS, DRAINS, TEMPERATURE/PRESSURE RELIEF VALVES NOT SHOWN FOR CLARITY.
 - 11 DISTRICT HEATING MAINS TO BE COMPLETE WITH ALL VALVES, FITTINGS, EXPANSION PROVISION & LEAK DETECTION.
 - 12 CONTRACTOR SHALL MAKE SURE ALLOWANCE FOR INSTALLED DISTRICT HEATING MAINS AROUND EXISTING UTILITIES SERVICES AND DRAINAGE EXISTING ALL CLONES ARE AVOIDABLE.
 - 13 PIPework TO BE INSTALLED AT THE CORRECT DEPTH AND FALLS IN BULLETS TRENCH, COMPLETE WITH BONDING AND MAKE GOOD FOLLOWING TESTING AND COMMISSIONING.
 - 14 IN THE CASE OF THE EXISTENCE OF SERVICES THE ABOVE DETAIL IS DETERMINED BY THE BENCH SHALL BE AS PER THE STANDARD SPECIFICATION FOR DISTRICT HEATING NETWORKS FOR DISTRICT HEATING NETWORKS.
 - 15 TRENCH DEPTH SHALL BE AS THE STANDING SPECIFICATION FOR DISTRICT HEATING NETWORKS.
 - 16 FOR CONNECTION BRANCH DETAILS NOT DRAWN CONTRACTOR TO CONSULT MANUFACTURERS STANDARD DETAILS.

SCALE	1:25	CHECKED BY	AO
DRAWN BY	DATE	DECEMBER 2019	TC
DTA Consulting Engineers LLP Multi Discipline Consultancy Newport House, Tinsdale Square Thornaby Park, Stockton on Tees, TS17 6EE Tel No: 01462 634 886 Fax No: 01462 634 877 Email: info@dtacoe.co.uk Web: www.dta.co.uk TINE & VERA TESSIE			
REV.	DATE	DESCRIPTION	DR. CH.
0	17.04.14	FOR INFORMATION	DW. TC
A	06.05.14	CONNECTION TO MAINS WATER SERVICES REVISED	DW. TC
B	03.07.15	TENDER ISSUE	QL. LA
C	30.07.15		PB. LA

CLIENT: **Camden**

PROJECT: ALEXANDRA ROAD ESTATE

TITLE: TYPICAL SUB PLANT ROOM SERVING BLOCK B

DRAWING No. 5649M-141 REV. C