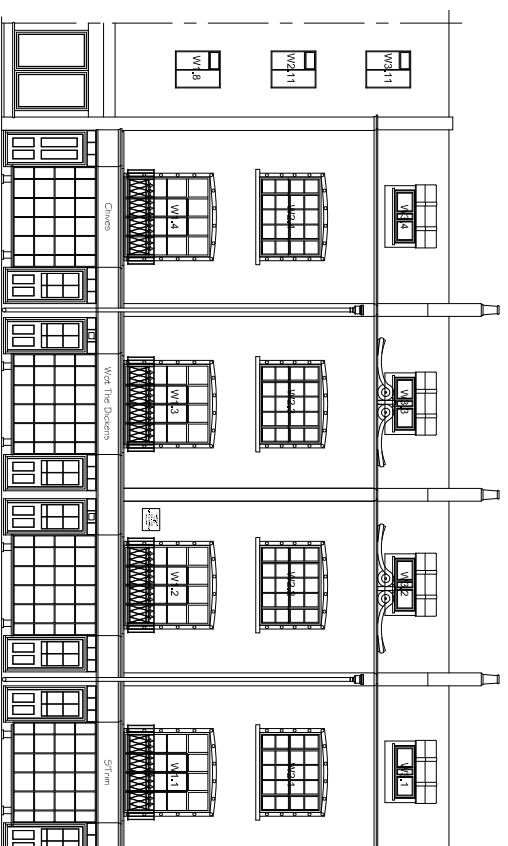
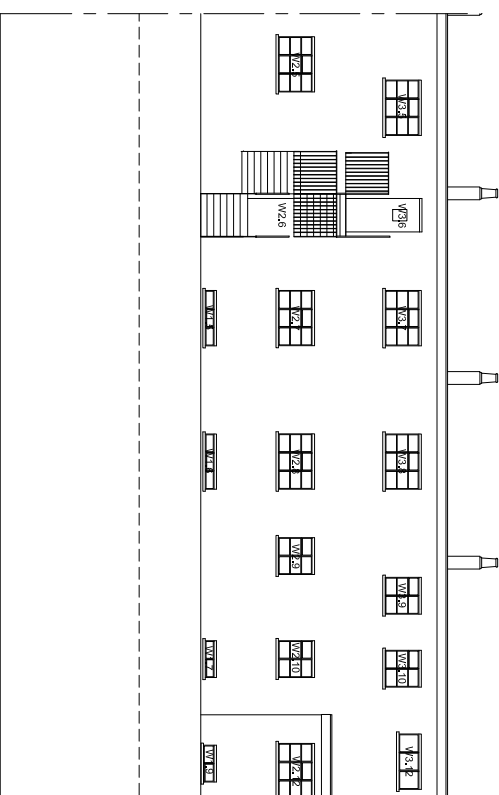


1:200



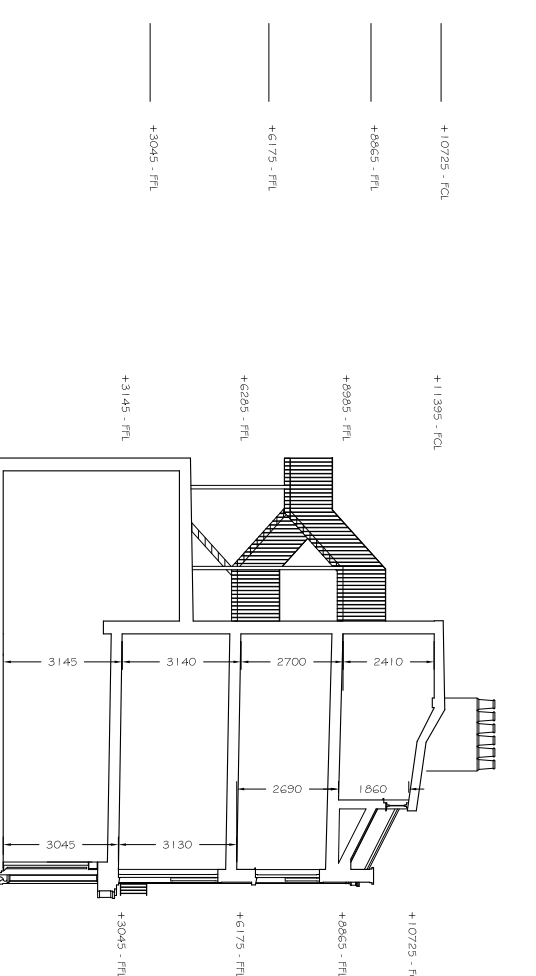
FRONT ELEVATION - AS EXISTING 1:200



REAR ELEVATION - AS EXISTING 1:200

**EXISTING WINDOW SCHEDULE**

- W1.1 2050x2325mm single glazed timber double doors, sidelights with fanlights
- W1.2 2050x2325mm single glazed timber double doors, sidelights with fanlights
- W1.3 2050x2325mm single glazed timber double doors, sidelights with fanlights
- W1.4 2050x2325mm single glazed timber double doors, sidelights with fanlights
- W1.5 1450x260mm single glazed steel window; 2no. fixed lights; 1no. top hung opener
- W1.6 1450x260mm single glazed steel window; 2no. fixed lights; 1no. top hung opener
- W1.7 1000x260mm single glazed steel window; 1no. fixed light; 1no. top hung opener
- W1.8 1000x1200mm single glazed steel window; 1no. fixed light; 1no. top hung opener; 1no. side hung casement
- W1.9 1450x900mm single glazed steel window; 1no. fixed light; 1no. top hung opener; 2no. side hung casements
- W2.1 1575x1975mm single glazed timber bay window; 3no. sliding sashes
- W2.2 1575x1975mm single glazed timber bay window; 3no. sliding sashes
- W2.3 1575x1975mm single glazed timber bay window; 3no. sliding sashes
- W2.4 1500x900mm single glazed steel window; 1no. fixed light; 1no. top hung opener; 2no. side hung casements
- W2.5 900x2100 timber door and frame; 285x365mm vision panel
- W2.6 1500x900mm single glazed steel window; 1no. fixed light; 1no. top hung opener; 2no. side hung casements
- W2.7 1500x900mm single glazed steel window; 1no. fixed light; 1no. top hung opener; 2no. side hung casements
- W2.8 1000x900mm single glazed steel window; 1no. fixed light; 1no. top hung opener; 1no. side hung casement
- W2.9 1000x900mm single glazed steel window; 1no. fixed light; 1no. top hung opener; 1no. side hung casement
- W2.10 1000x900mm single glazed steel window; 1no. fixed light; 1no. top hung opener; 1no. side hung casement
- W2.11 1450x900mm single glazed steel window; 1no. fixed light; 1no. top hung opener; 2no. side hung casements (window concealed)
- W3.1 1600x600mm PVCu double glazed window in softwood subframe; 2no. side hung casements
- W3.2 1600x600mm PVCu double glazed window in softwood subframe; 2no. side hung casements
- W3.3 1600x600mm PVCu double glazed window in softwood subframe; 2no. side hung casements
- W3.4 1500x900mm single glazed steel window; 1no. fixed light; 1no. top hung opener; 2no. side hung casements
- W3.5 900x2100 timber door and frame; 285x365mm vision panel
- W3.6 1500x900mm single glazed steel window; 1no. fixed light; 1no. top hung opener; 2no. side hung casements
- W3.7 1500x900mm single glazed steel window; 1no. fixed light; 1no. top hung opener; 2no. side hung casements
- W3.8 1000x900mm single glazed steel window; 1no. fixed light; 1no. top hung opener; 1no. side hung casement
- W3.9 1000x900mm single glazed steel window; 1no. fixed light; 1no. top hung opener; 1no. side hung casement
- W3.10 1000x1200mm single glazed steel window; 1no. fixed light; 1no. top hung opener; 1no. side hung casement
- W3.11 1450x900mm single glazed steel window with all fixed lights
- W3.12 1450x600mm single glazed steel window with all fixed lights



SECTION AA 1:200

AMENDMENTS	DATE
B CHIMNEY'S CLARIFIED; SERVICE VOID IDENTIFIED; FLOOR LEVELS SHOWN;	10.06.15
A PLANNING APPLICATION	24.07.14

**CLIENT**  
**DALEPASS LTD**  
**7 IRON BRIDGE HOUSE**  
**3 BRIDGE APPROACH**  
**LONDON, NW1 8BD**

**PROJECT**  
**CONVERSION TO FLATS**  
**1-7 Woburn Walk**  
**London, WC1H 0JJ**

**DRAWING TITLE**  
**PLANS AND ELEVATIONS**  
**AS EXISTING**

**DATE**  
 18.07.2014

**SCALE**  
 1:200 @ A3

**DRAWING No.**  
 14A\_032\_001

**REVISION**  
 B



CHARTERED SURVEYORS  
 ARCHITECTS & ENGINEERS

11 Dragon House  
 Hussar Court  
 Bransbys Business Park  
 Portsmouth  
 Hampshire  
 PO7 7SF

**T.** 023 9225 7711  
**F.** 023 9225 7712

**www.martinralph.co.uk**  
**info@martinralph.co.uk**

FLOOR PLANS - AS EXISTING  
 EXISTING PLANS, SECTIONS AND  
 ELEVATIONS

1-7 WOBURN WALK,  
 CAMDEN

**NOTES:**

This drawing has been prepared for the purpose of Planning and/or Building Regulations approval only, and is not to be used for any other purpose. Drawing based on measured survey / OS Plan.

All dimensions to be checked on site and any discrepancy notified to The Martin Ralph Group. Written dimensions are to be used in preference to scaled dimensions.

This drawing is the property of The Martin Ralph Group and must not be reproduced, in part or whole, or deviated from, without their permission.