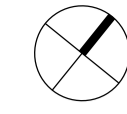


North

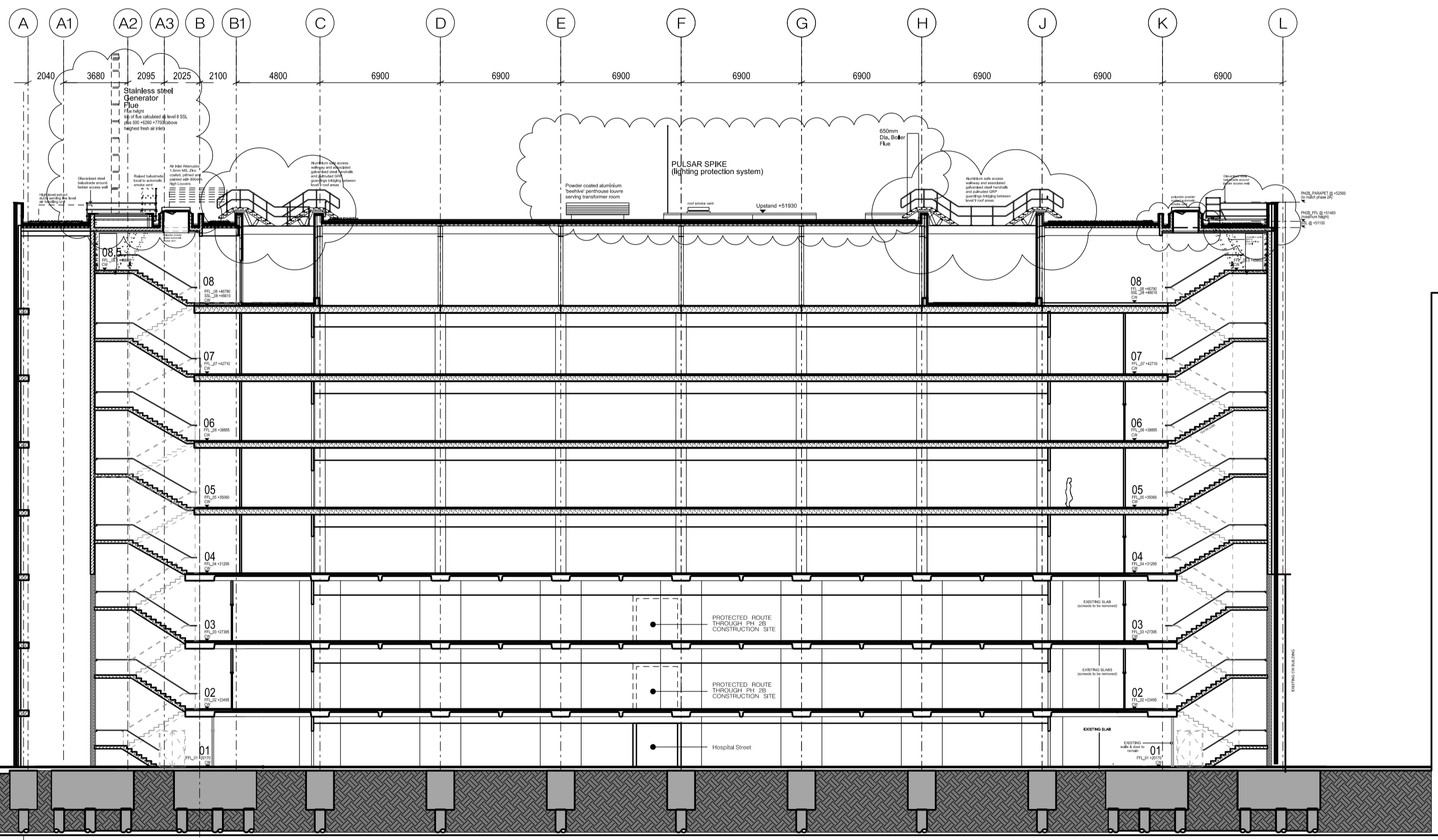
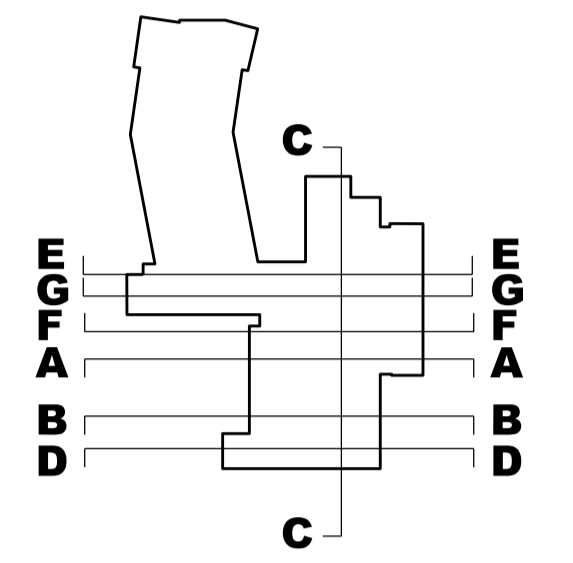


- All dimensions to be checked on site
- Do not scale off this drawing
- All dimensions are shown in mm unless otherwise stated
- Refer to drawing issue sheet for purpose of issue
- If in doubt ask
- © Lewelyn Davies Weeks Ltd.

Notes

Refer to WSP drawing WSP\_0523\_K\_GA\_500\_08\_101 for full extent of roof mounted plant equipment

Refer to plan and other sections for position of BMU running track



C4	Issued under DCR A-076 for approval. Issued for concurrent planning approval of details of plant etc (discharge of Condition 8) and Non Material Amendments (minor changes to elevations)	08.07.15 NR
C3	Issued under DCR A-071 for approval	16.06.15 NR
C2	Issued under DCR A-069 for approval	15.06.15 NR
C1	Construction Issue	26.05.14 MN
T1	Updated for Tender Issue Roof updated to reflect current plant layout and To GOSH Comments	17.01.13 AA
04	Drg no updated	19.09.12 MG
03	drawing updated to GOSH comments	07.09.11 AA
02	External Wall & Roof updated	20/05/11 GH
01	General amend & Struct frame changed to RC 21/04/11	GH

No.	Description	Date	By

Structural Consultant	Services Consultant
WSP	WSP
Project Manager	Cost Consultant
CT	CT
Project Title	

Great Ormond Street Hospital  
Phase 2 B

Client

Great Ormond Street NHS  
Hospital for Children  
NHS Trust

Drawing Title

SECTION C-C

Drawing Number

00\_2B\_S\_CC

Scale @ A1

A1\_1:200 - A3\_1:400

Date

Architects

**LLEWELYN DAVIES**

Architects | Planners | Designers  
www.ldaves.com