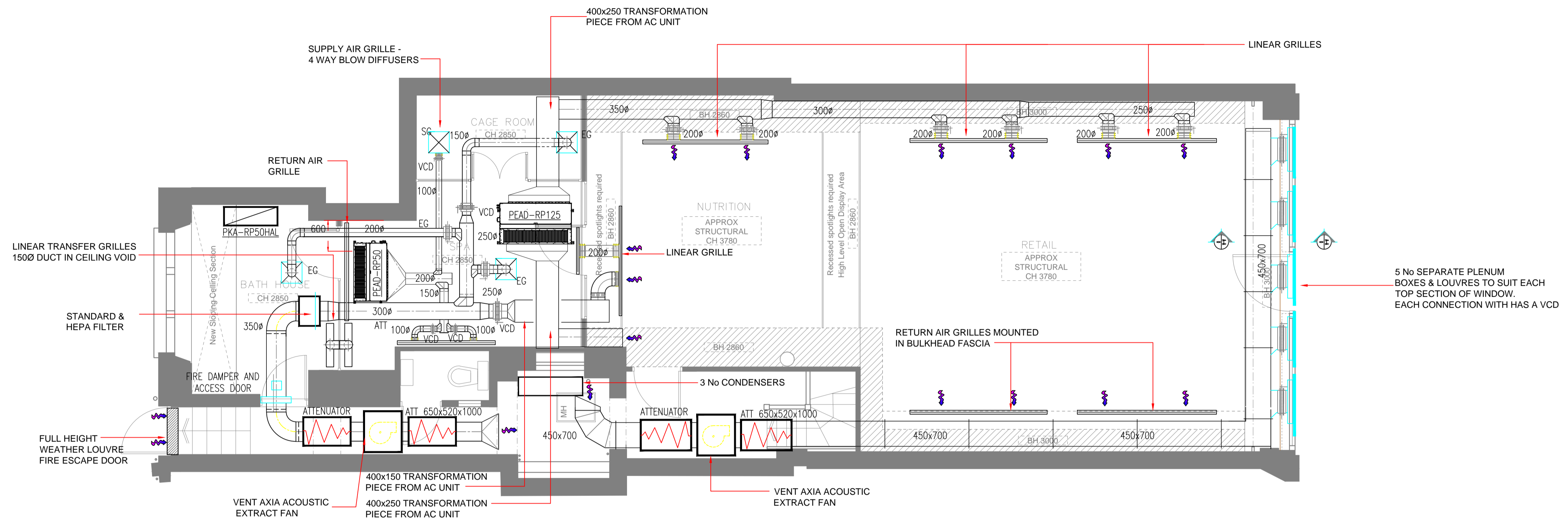
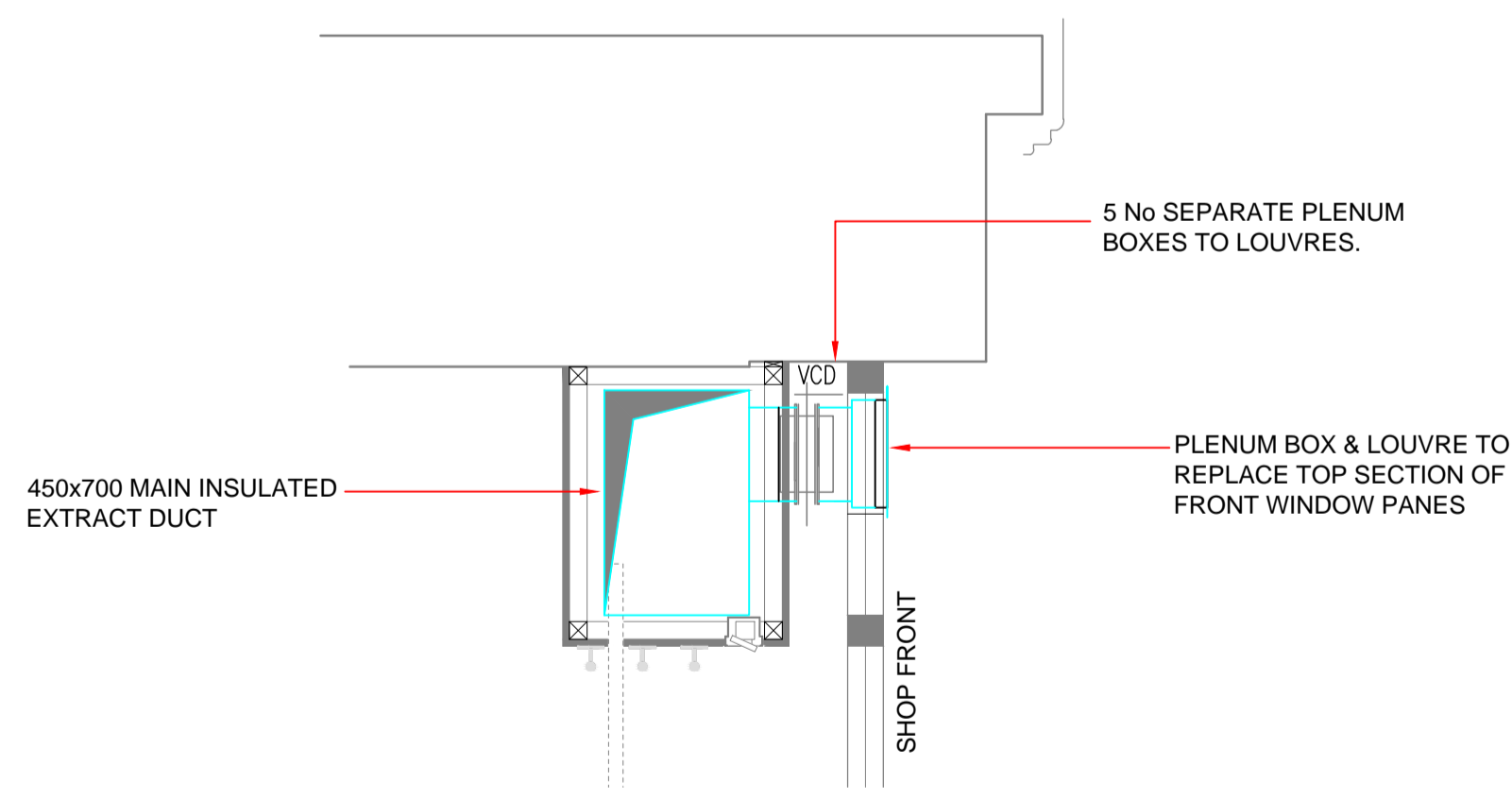


Please do not scale from this drawing

LEGEND



PLAN LAYOUT



SECTION A-A SCALE 1:20

Air Conditioning Equipment

| Location Served | System Component | Manufacturer | Model No. | Dimensions Hmm x Wmm x Dmm | Weight Kg | Duty | | Air Flow Rate | | Pipesize ø" | Notes |
|-------------------------|----------------------------|--------------|------------------|-------------------------------|--------------|---------------|---------------|---------------|---------|----------------|---|
| | | | | | | Cooling kW | Heating kW | High L/S | Low L/S | | |
| Retail & Nutrition Area | Indoor Ducted Fan Coil | Mitsubishi | PEAD-RP125JAQ | 250mm x 1400mm x 732mm | 47kg | 12.5kW | 14kW | 700 | 492 | 3/8" & 5/8" | Controlled by PAR-31MAA Wired Controller (location tbc) |
| | Outdoor Condensing Unit | Mitsubishi | PUHZ-28RP125VKA2 | 990mm x 940mm x 320mm | 118kg | n/a | n/a | n/a | n/a | | |
| Spa & Cage Room | Indoor Ducted Fan Coil | Mitsubishi | PEAD-RP50JAQ | 250mm x 1100mm x 732mm | 28kg | 6.1kW | 7kW | 250 | 167 | 1/4" & 1/2" | Controlled by PAR-31MAA Wired Controller (location tbc) |
| | Outdoor Condensing Unit | Mitsubishi | MXZ-5D102VA | 915mm x 900mm x 320mm | 70kg | 10.2kW | 10.5kW | n/a | n/a | | |
| Bath House | Indoor Wall Mount Fan Coil | Mitsubishi | PKA-RP50HAL | 295mm x 898mm x 295mm | 13kg | 4.6kW | 5.0kW | 200 | 150 | 1/4" & 1/2" | Controlled by independent infra-red remote controller |
| | Outdoor Condensing Unit | Mitsubishi | MXZ-5D102VA | 915mm x 900mm x 320mm | 70kg | 10.2kW | 10.5kW | n/a | n/a | | |

Ventilation Fans

| Location Served | System Component | Manufacturer | Model No. | Dimensions mmø x mmH x mmW x mmD | Air Flow Rate | Electrical Supply |
|------------------------------------|------------------|--------------|------------|-------------------------------------|---------------|-------------------|
| | | | | | l/sec @ Dpa | |
| Condenser area | Extract Fan | Vent-Axia | ACQ500-14C | 500ø x 649mm x 732mm x 670mm | 1,320 l/sec | 400V/3ph/50Hz. |
| Retail, Spa, Cage Room & Bathhouse | Extract Fan | Vent-Axia | ACQ500-14C | 500ø x 649mm x 732mm x 670mm | 1,320 l/sec | 400V/3ph/50Hz. |
| Basement Office | Extract Fan | Vent-Axia | ACM200 | 147mmø x 276mm x 300mm x 223mm | 240 l/sec | 240V/1ph |
| Basement Office | Supply Fan | Vent-Axia | ACM200 | 147mmø x 276mm x 300mm x 223mm | 240 l/sec | 240V/1ph |

| | | | |
|-----|--|------|----------|
| E | Air conditioning manufacturer change | SB | 22.07.15 |
| D | Further changes to Ventilation Scheme. | SB | 11.06.15 |
| C | Further changes to Ventilation Scheme. | SB | 20.05.15 |
| B | Amended to comments | SB | 21.04.15 |
| A | Amended to comments | SB | 16.04.15 |
| Rev | Description | Init | Date |

| CONTRACT | | Barkers, Hampstead. | |
|----------|-------------------|---------------------|-------------|
| CLIENT | DESCRIPTION | | |
| | Ground AC Layout. | | |
| Drawn | Date | Scale | Drawing No. |
| SB | APR15 | 1:50 | 360-00-AC01 |
| | | | Rev |
| | | | E |



Air Conditioning Specialists
 Admiral House, 117 High Street,
 Berkhamsted, Herts, HP4 2DJ
 Tel: 01442 871180 Fax: 01442 863604
 email: sales@360engineering.co.uk www.360engineering.com