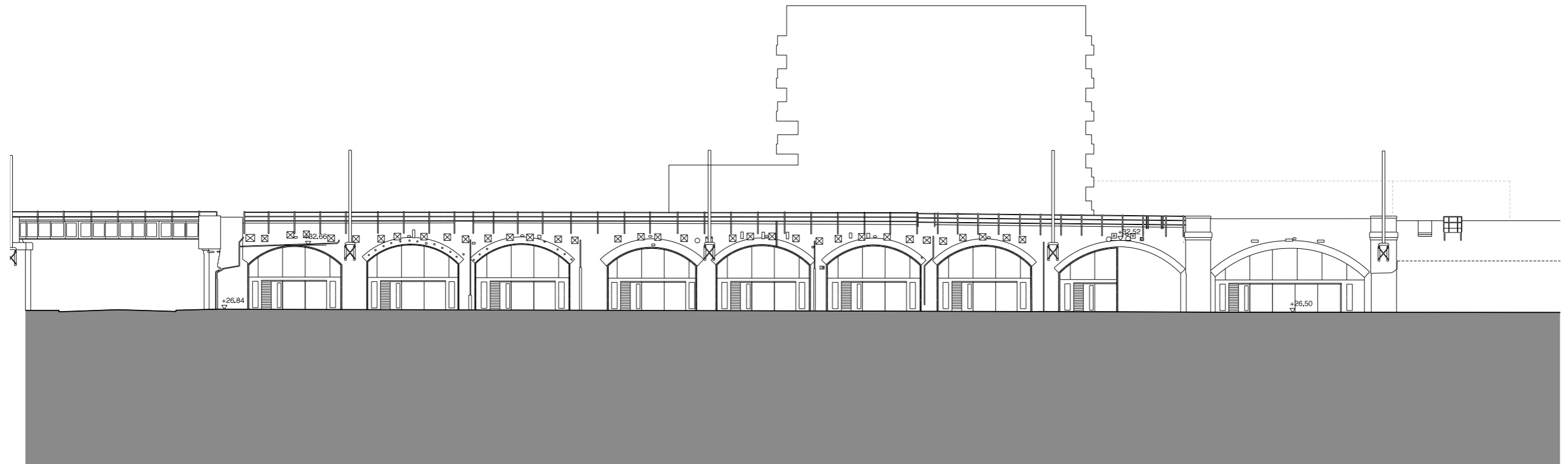


## 5.0 Viaduct Arches (Building V)

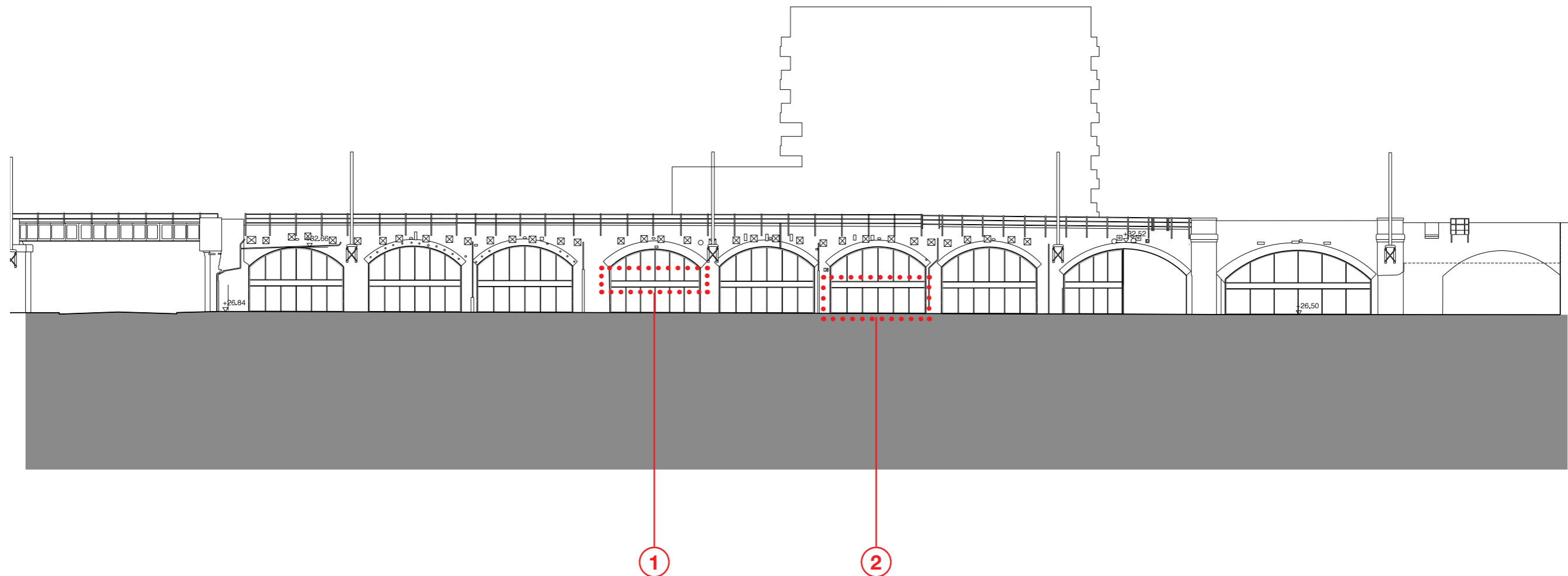
5.7 Permitted Planning Scheme -  
Area C (north) Arches



## 5.0 Viaduct Arches (Building V)

### 5.8 Revised Scheme-

#### Area C (north) Arches

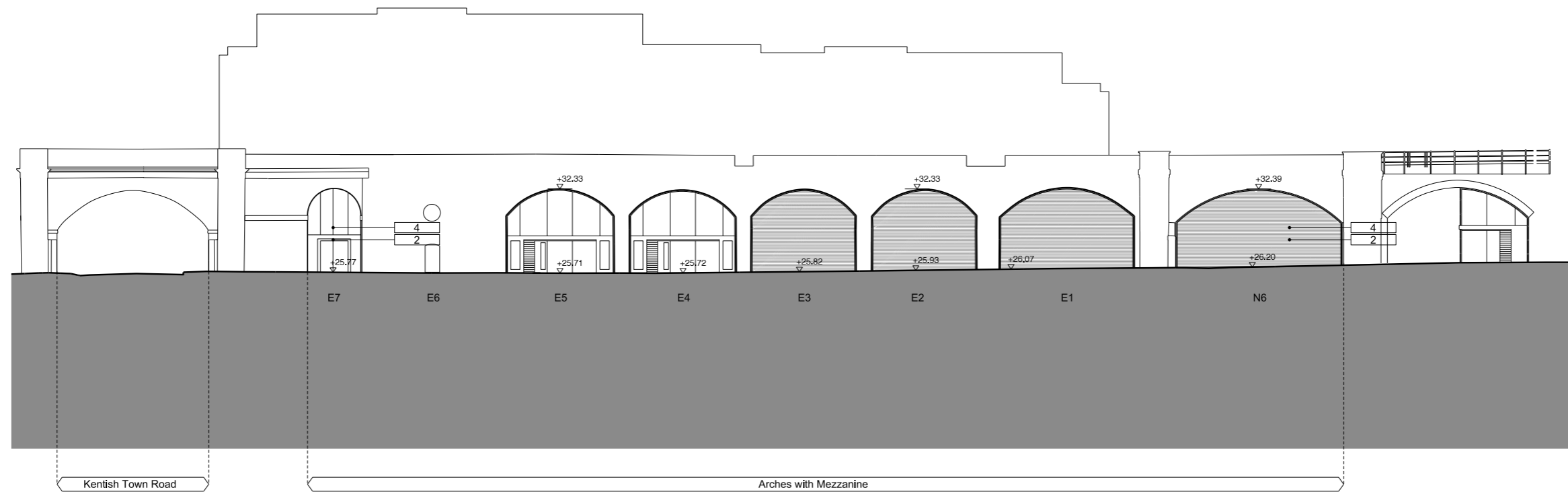


#### Revisions

- ① Panels incorporating signage and ventilation zone
- ② Removal of louvres on ground floor entrance elevation

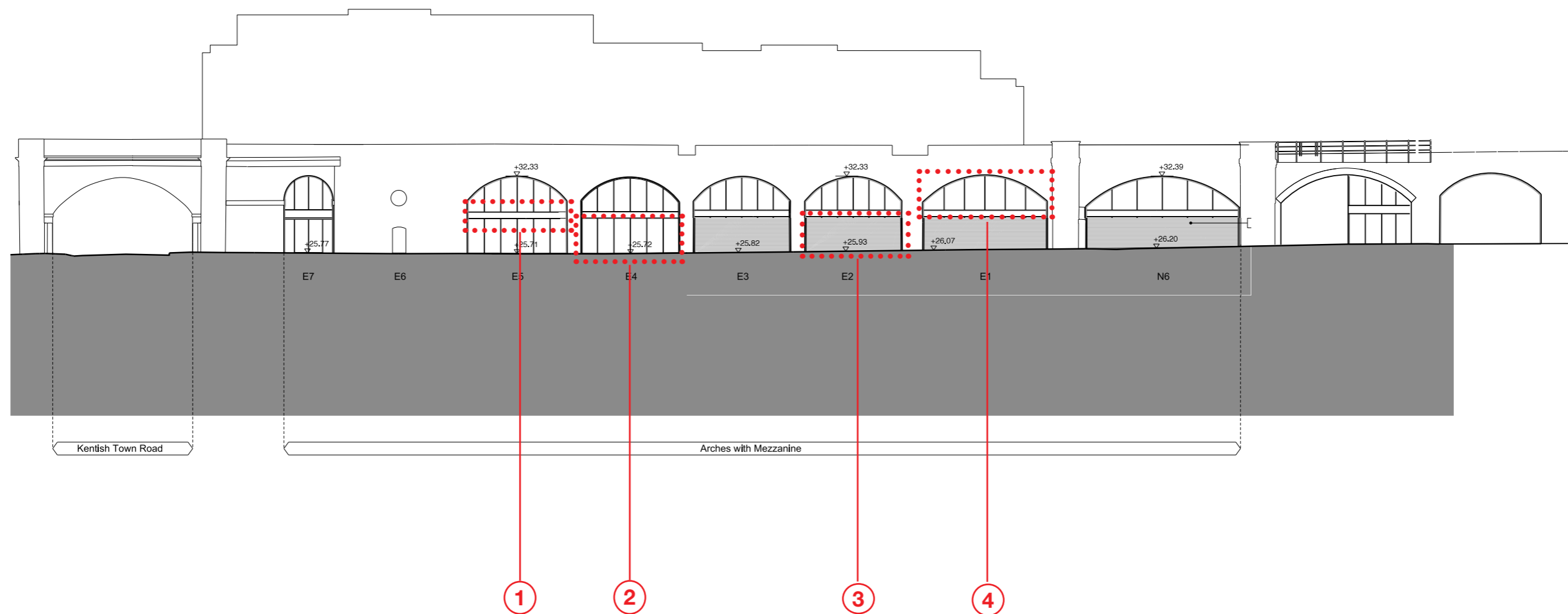
## 5.0 Viaduct Arches (Building V)

### 5.9 Permitted Planning Scheme - Area B Arches



## 5.0 Viaduct Arches (Building V)

### 5.10 Revised Scheme - Area B Arches



#### Revisions

- |   |                                       |
|---|---------------------------------------|
| ① Panels incorporating signage and ventilation zone | ③ Brick wall                          |
| ② Potential full-width opening entrance on facade   | ④ Curtain wall system. Obscured glass |



## 6.0 Public Realm

## 6.0 Public Realm: Ground plane layout

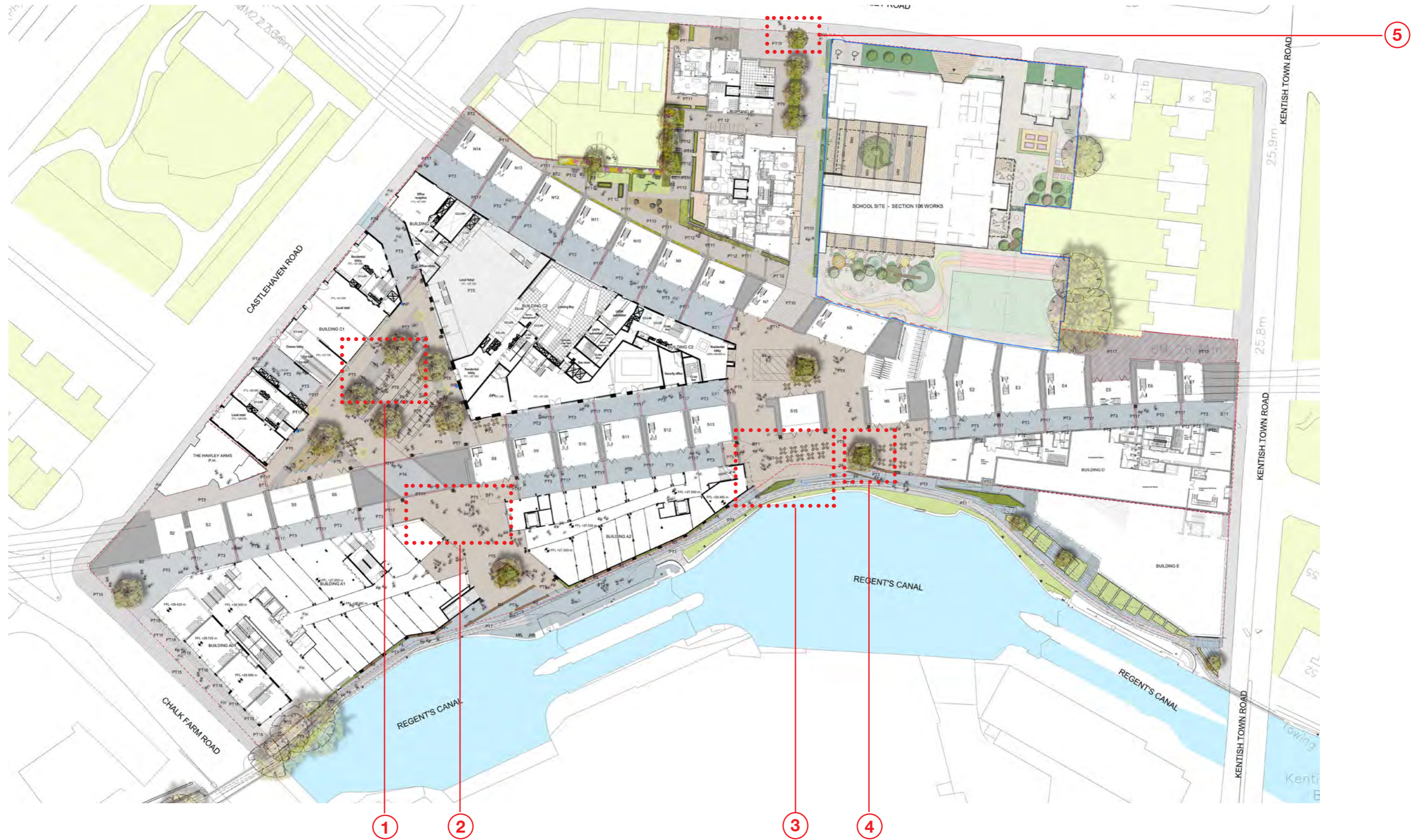
### 6.1 Permitted Planning Scheme



**Revisions**

- 1** One tree removed after coordination with basement, but relocated as per item 5.
- 2** Isolated benches removed
- 3** Levels revised to allow for existing underground services
- 4** One larger tree, replacing two medium trees due to UKPN access requirements
- 5** New tree added to reduce possibility of unwanted vehicular access

**6.0 Public Realm:  
(Including proposal for Area E)  
6.2 Revised Scheme**





## 6.0 Public Realm - Arches Space

### 6.3 Permitted Planning Scheme

