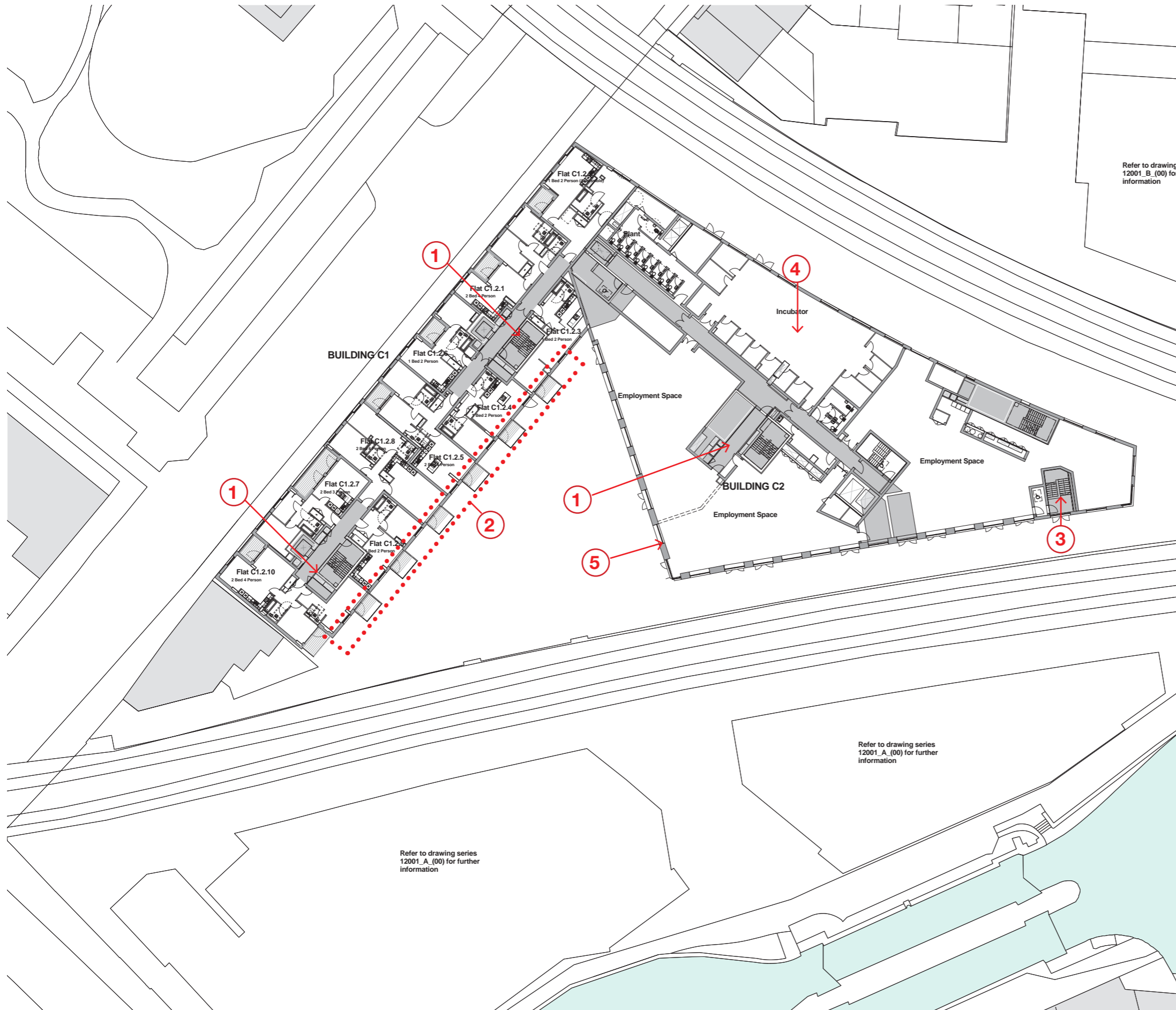


# 4.0

## Building C

4.18

Revised Scheme -  
C1 Second Floor /  
C2 First Floor



Refer to drawing s  
12001\_B\_(00) for f  
information

### Revisions

- ① Core layout revised to meet vertical transportation strategy
- ② Balcony locations rationalised to improve design & efficiency
- ③ Additional escape stair for office required as per fire strategy
- ④ Detailed design for incubator space revised as per planning condition
- ⑤ Additional window added to employment space to improve daylighting and to rationalise facade setting

General note: The overall mix of residential units complies with the planning permission

General note: The residential units have been amended to improve the layouts

Refer to drawing series  
12001\_A\_(00) for further  
information

Refer to drawing series  
12001\_A\_(00) for further  
information

**INTERNAL LAYOUTS  
ARE INDICATIVE ONLY**

# 4.0 Building C

## 4.19 Permitted Planning Scheme - C1 Third Floor / C2 Second Floor

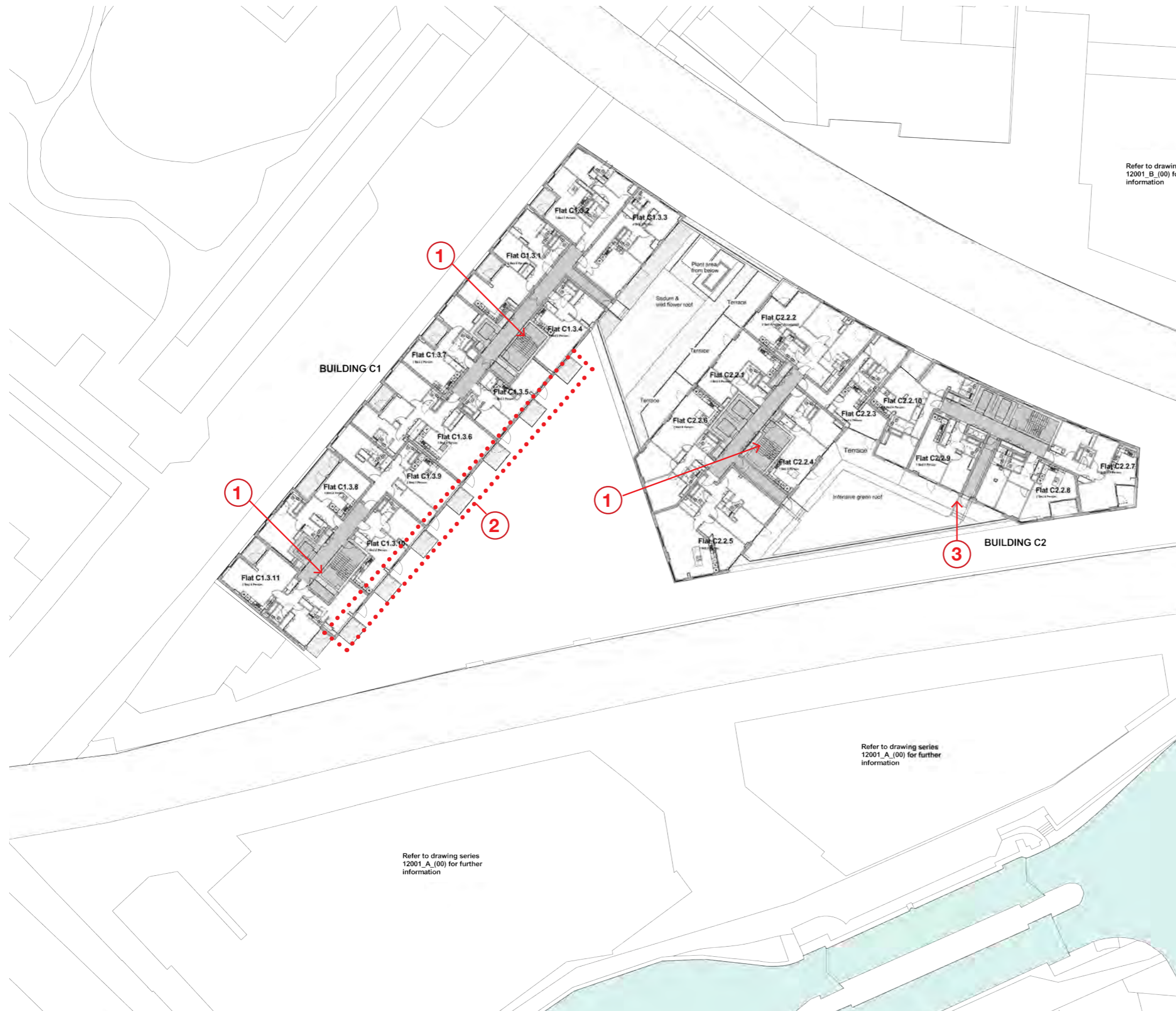


INTERNAL LAYOUTS  
ARE INDICATIVE ONLY



# 4.0 Building C

## 4.20 Revised Scheme - C1 Third Floor / C2 Second Floor



### Revisions

- ① Core layout revised to meet vertical transportation strategy
- ② Balcony locations rationalised to improve design & efficiency
- ③ Additional emergency access doors required to roof terrace

General note: The overall mix of residential units complies with the planning permission

General note: The residential units have been amended to improve the layouts

**INTERNAL LAYOUTS ARE INDICATIVE ONLY**

# 4.0 Building C

## 4.21 Permitted Planning Scheme - C1 Fourth Floor / C2 Third Floor



**INTERNAL LAYOUTS  
ARE INDICATIVE ONLY**

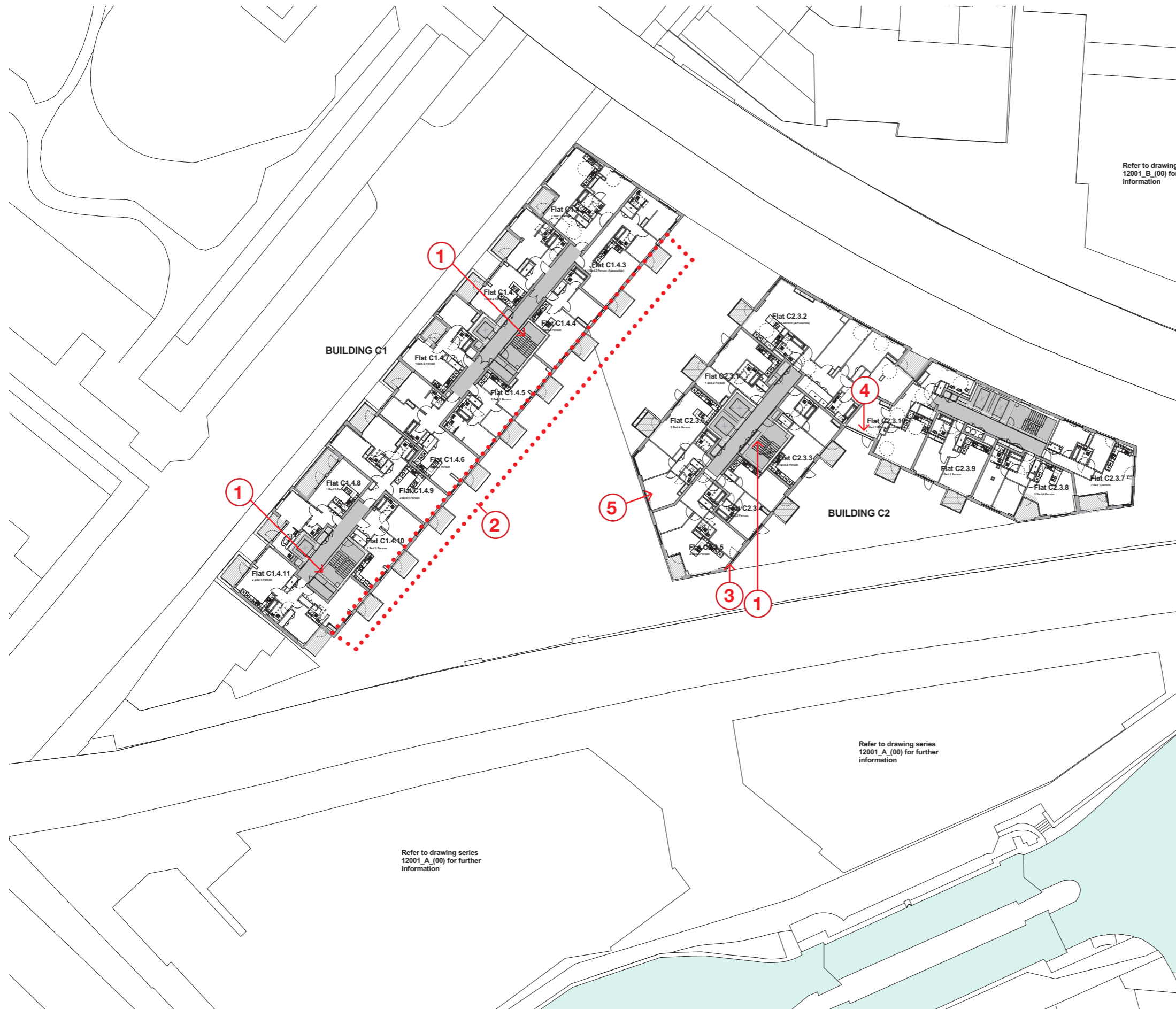


## 4.0

## Building C

### 4.22

### Revised Scheme - C1 Fourth Floor / C2 Third Floor



#### Revisions

- ① Core layout revised to meet vertical transportation strategy
- ② Balcony locations rationalised to improve design & efficiency
- ③ Window amended as per daylight & sunlight strategy
- ④ Balcony removed due to privacy concerns
- ⑤ Inset balcony removed in order to rationalise facade setting

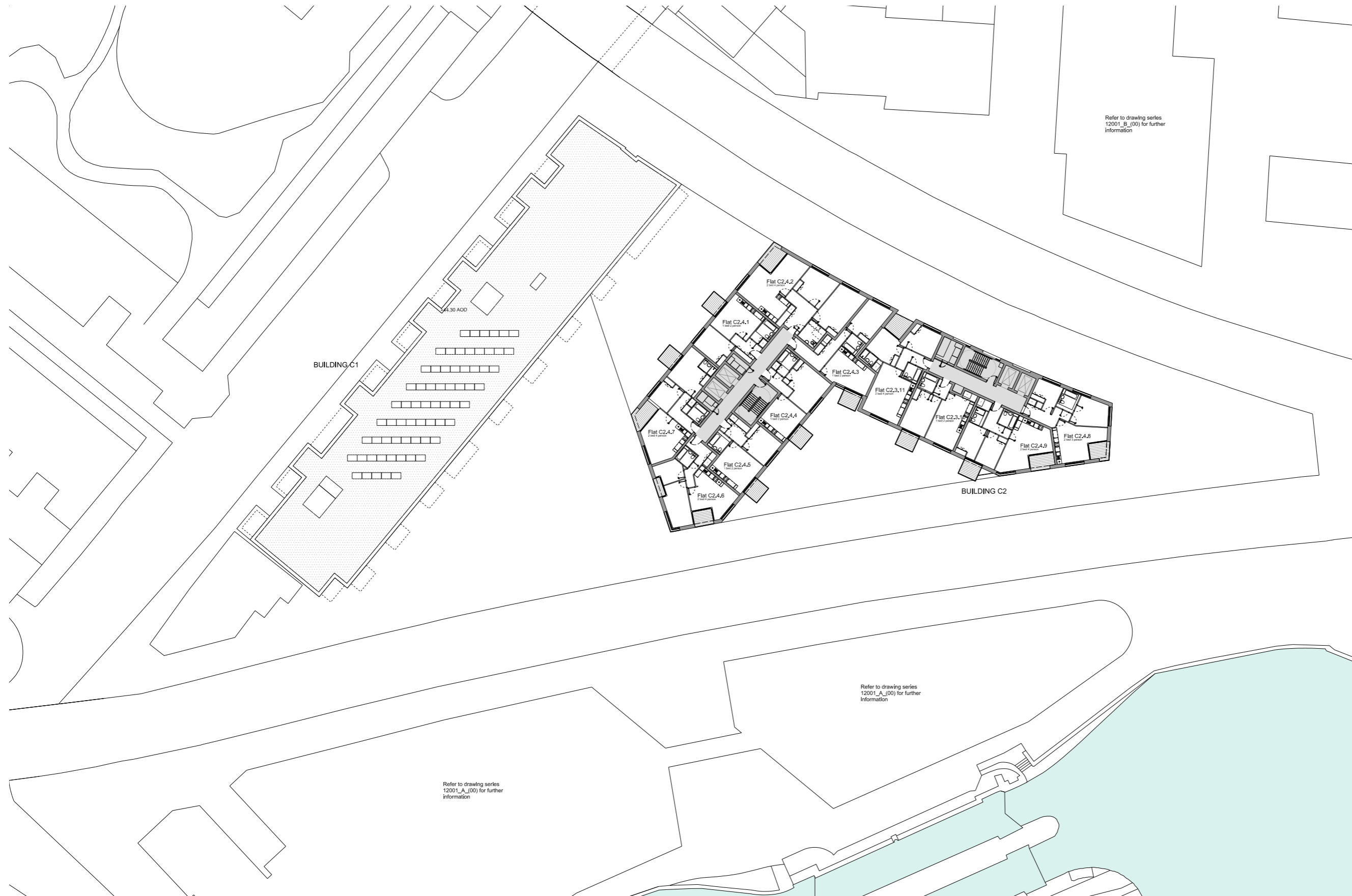
General note: The overall mix of residential units complies with the planning permission

General note: The residential units have been amended to improve the layouts

**INTERNAL LAYOUTS  
ARE INDICATIVE ONLY**

## 4.0 Building C

### 4.23 Permitted Planning Scheme - C1 Roof / C2 Fourth Floor



**INTERNAL LAYOUTS  
ARE INDICATIVE ONLY**