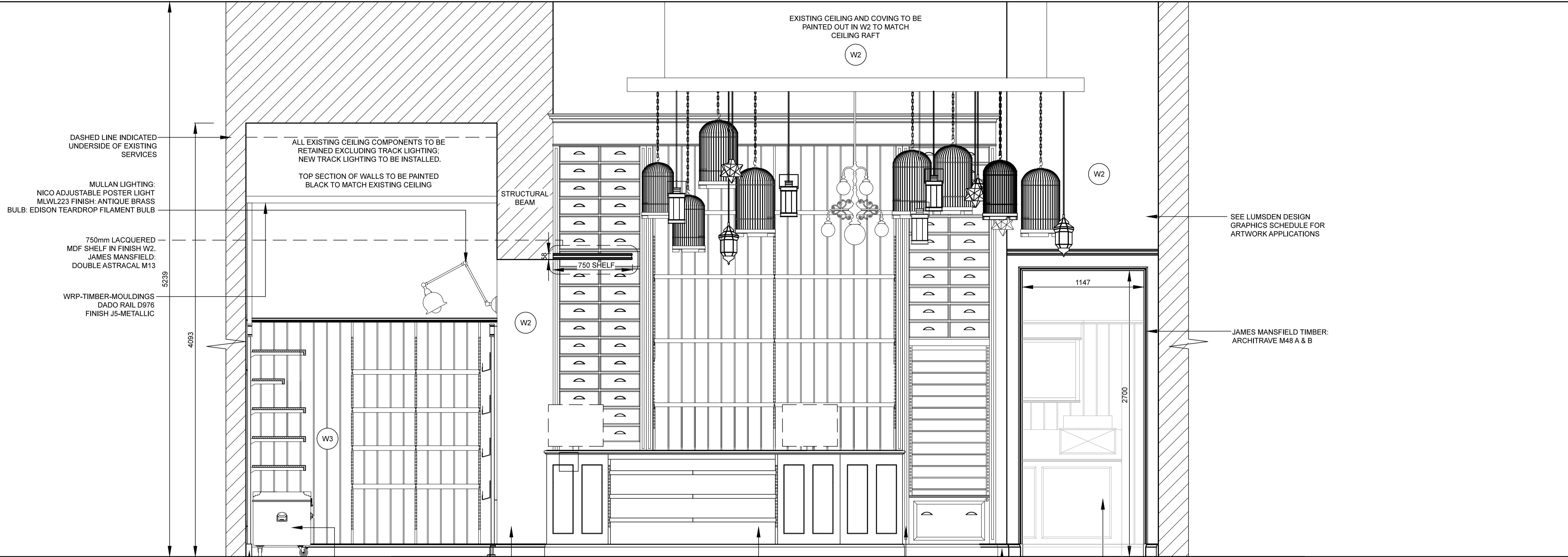


**PLATFORM 9 3/4 EXTENSION**  
**INTERIOR SECTIONS**  
 SCALE 1:20

**A VERIFICATION OF ALL SITE DIMENSIONS IS RECOMMENDED PRIOR TO COMMENCEMENT OF ANY WORKS.**  
**CONTRACTOR MUST REPORT ANY DISCREPANCIES TO LUMSDEN DESIGN & PRODUCE SETTING OUT DRAWINGS FOR APPROVAL BY LUMSDEN DESIGN.**

**IMPORTANT NOTE:**

NOTES  
 DO NOT SCALE FROM DRAWING  
 ALL DIMENSIONS TO BE CHECKED AND VERIFIED ON SITE PRIOR TO MANUFACTURE OR CONSTRUCTION. CONTRACTOR TO REPORT ANY DISCREPANCIES TO LUMSDEN DESIGN IMMEDIATELY.  
 CONTRACTOR TO PRODUCE SETTING OUT DRAWINGS OF ALL COMPONENTS FOR APPROVAL BY LUMSDEN DESIGN, PRIOR TO MANUFACTURE.  
 ALL CONSTRUCTION, FIT OUT MATERIALS AND ELECTRICAL WORKS TO COMPLY WITH THE RELEVANT BUILDING REGULATIONS, CURRENT BRITISH STANDARDS AND CODES OF PRACTICE.  
 THE DRAWING AND THE WORKS DEPICTED ARE THE COPYRIGHT OF LUMSDEN DESIGN LTD AND MAY NOT BE REPRODUCED EXCEPT BY WRITTEN PERMISSION



**MATERIALS LEGEND:**

PLEASE NOTE:  
 CONTRACTOR TO ADVISE & PROVIDE SAMPLES OF ALL MATERIALS FOR APPROVAL BY LUMSDEN DESIGN PRIOR TO CONSTRUCTION.

**JOINERY FINISHES**

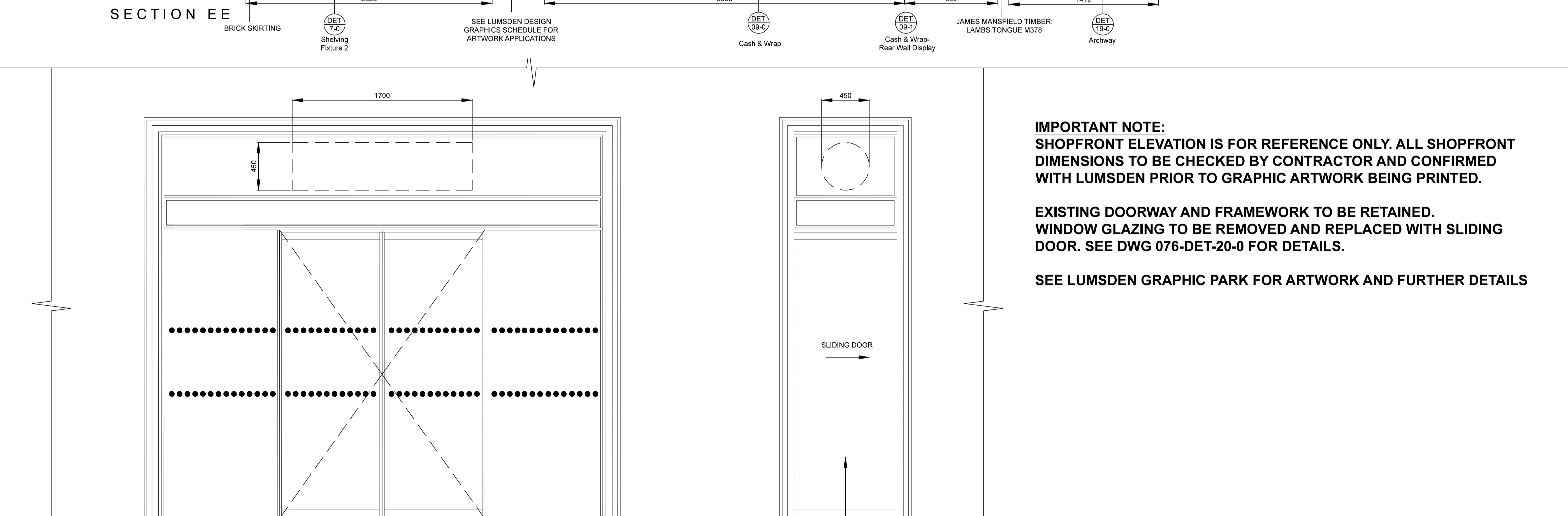
- J1 Blue Stained Timber  
Colour to match  
Dulux 90 BG 08/075
- J2 Reclaimed Timber  
Scaffold Shelving
- J3 Green Stained Timber  
Colour to match  
Dulux 30GY 50/195
- J4 Dark Blue Stained Timber  
Colour to match  
Dulux 30BB 05/022  
(Metallic effect where stated)
- J5 Blue Stained Timber  
With Metallic Effect  
Colour to match  
RAL 7031
- J6 Red Stained Timber  
Burgundy  
Dulux RR50  
98RR 06/206
- J7 Gold Leaf Distressed  
Hardwood  
(See ref. image  
where applicable)

**METALWORK FINISHES**

- M1 Powder coat finish to match  
Grey RAL 7043
- M2 Powder coat finish to match  
Pale Green RAL 6021
- M3 Mild Steel
- M4 Powder coat finish to match  
Blue Grey RAL 7031

**WALL FINISHES**

- W1 Brick Slips- Fast Clad:  
Smeed Dean Orchard Blend.  
Contact: Shaun Crosskey  
shaun.crosskey@fastclad.co.uk  
07966 418645
- W2 Dark Blue  
Dulux 30BB 05/022
- W3 Green  
Dulux 30GY 50/195



**IMPORTANT NOTE:**  
 SHOPFRONT ELEVATION IS FOR REFERENCE ONLY. ALL SHOPFRONT DIMENSIONS TO BE CHECKED BY CONTRACTOR AND CONFIRMED WITH LUMSDEN PRIOR TO GRAPHIC ARTWORK BEING PRINTED.

EXISTING DOORWAY AND FRAMEWORK TO BE RETAINED.  
 WINDOW GLAZING TO BE REMOVED AND REPLACED WITH SLIDING DOOR. SEE DWG 076-DET-20-0 FOR DETAILS.

SEE LUMSDEN GRAPHIC PARK FOR ARTWORK AND FURTHER DETAILS

REV	DATE	DESCRIPTION	BY
A	06/24/15	EXISTING CEILINGS ADDED ELEMENTS MODIFIED	SS

**Lumsden** 2 Cowcross Street  
 London EC1M 6DR UK  
 T +44(0)20 3384 1400

CLIENT LONDON FILM MUSEUM  
 PROJECT PLATFORM 9 3/4 EXTENSION  
 DRG INTERIOR SECTIONS

DRG No. 076-ELE-05-2 REV A  
 SCALE 1:20 @A1 DATE JUN 15

DRAWN BY SS

DRAWING STATUS  
**INFORMATION**