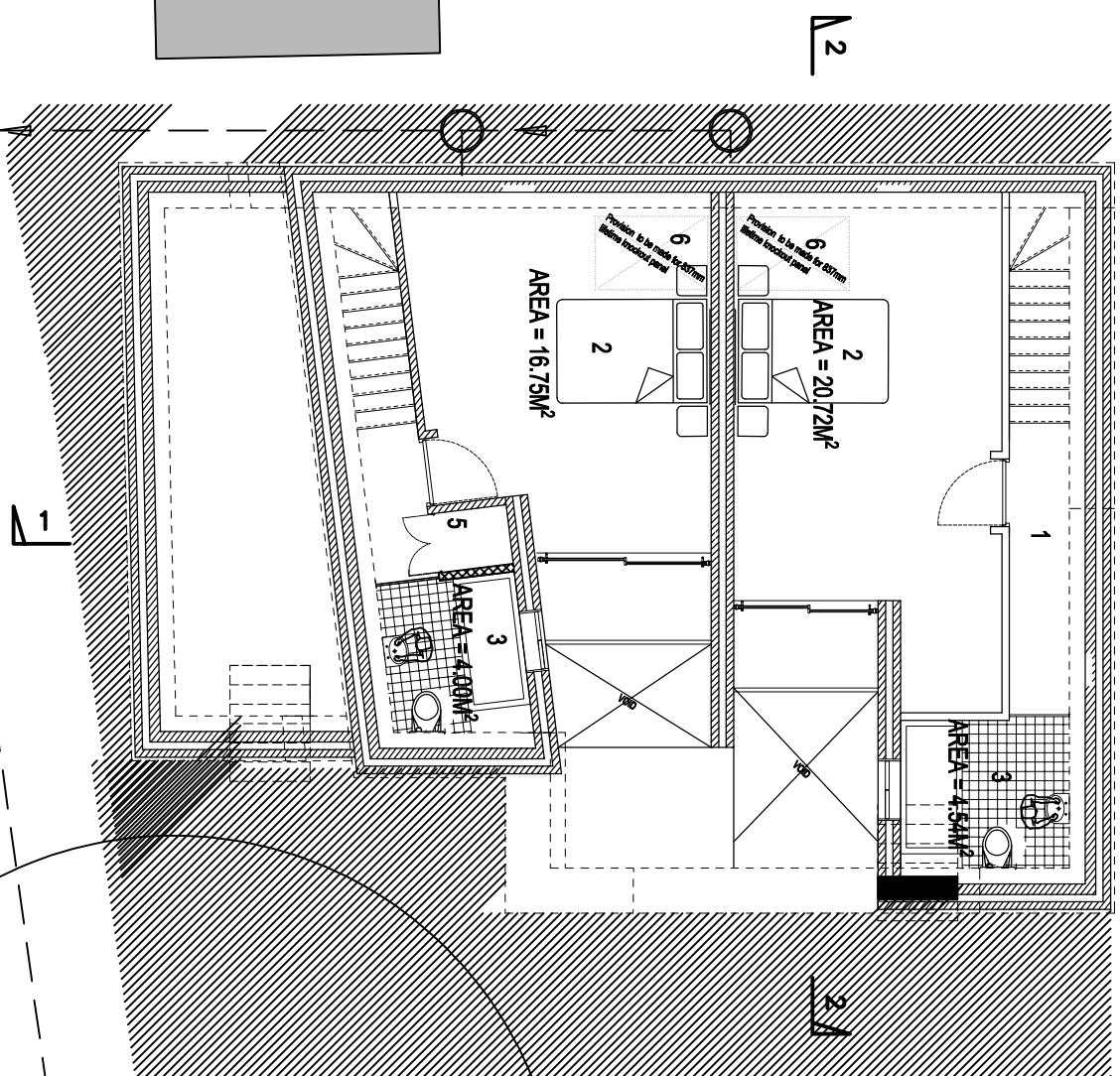


- ACCOMMODATION KEY:
- 1. HALL
  - 2. DOUBLE BEDROOM
  - 3. BATHROOM
  - 4. COURTYARD
  - 5. STORAGE
  - 6. LIFETIME KNOCKOUT PANEL



**Lower Ground Level Layout**  
(Scale 1:100)

**Construction Issue**  
For Building Control

REV.	Date	Description

Client **Shannon ISL,**  
Watford

**Shannon**  
Integrated Services Ltd  
Commercial & Domestic Property  
Maintenance & Refurbishment  
**020 7060 4234**  
[www.shannonisl.co.uk](http://www.shannonisl.co.uk)

Project Description  
**Proposed 2 No. New Dwellings at Land to  
Rear of 1a Frognal - Scheme 4**

Drawing Title  
**Proposed Lower Ground Floor Plan**

Date	Drawing No.	Rev.
March 2015	Frog_PISc4_002 .	