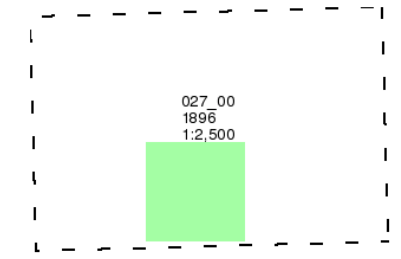


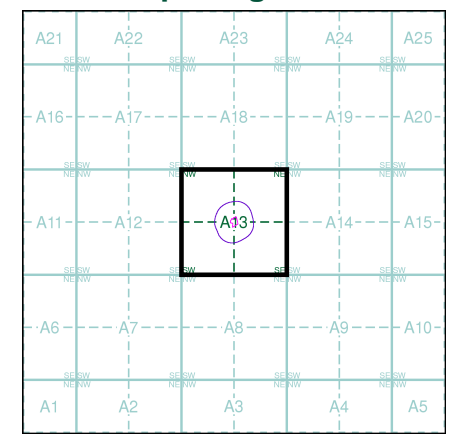
London
Published 1896
Source map scale - 1:2,500

The historical maps shown were reproduced from maps predominantly held at the scale adopted for England, Wales and Scotland in the 1840's. In 1854 the 1:2,500 scale was adopted for mapping urban areas and by 1896 it covered the whole of what were considered to be the cultivated parts of Great Britain. The published date given below is often some years later than the surveyed date. Before 1938, all OS maps were based on the Cassini Projection, with independent surveys of a single county or group of counties, giving rise to significant inaccuracies in outlying areas.

Map Name(s) and Date(s)



Historical Map - Segment A13



Order Details

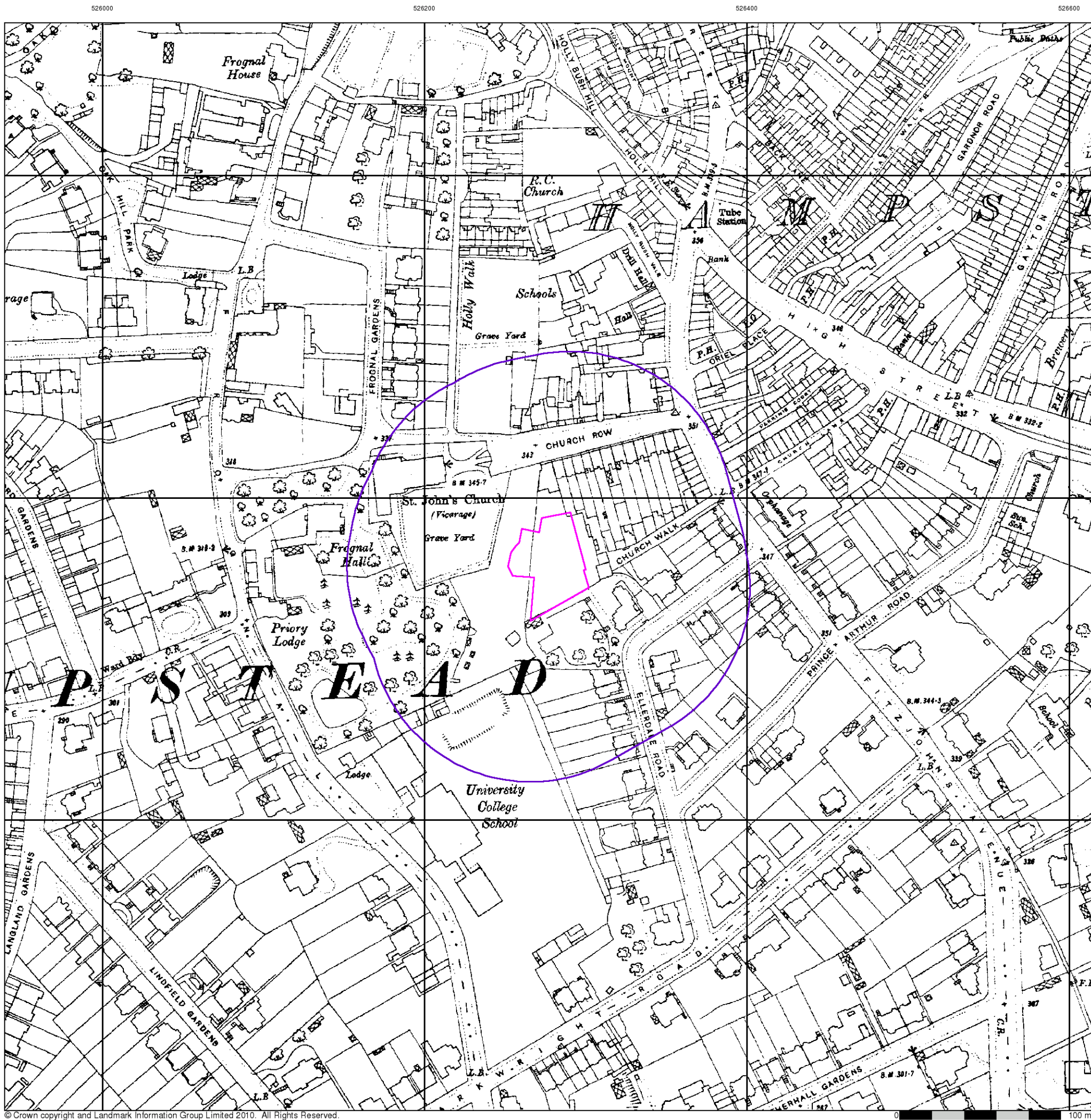
Order Number: 30089530_1_1
Customer Ref: J10021
National Grid Reference: 526280, 185560
Slice: A
Site Area (Ha): 0.2
Search Buffer (m): 100

Site Details

22 Frognal Way, LONDON, NW3 6XE



Tel: 0844 844 9952
Fax: 0844 844 9951
Web: www.envirocheck.co.uk



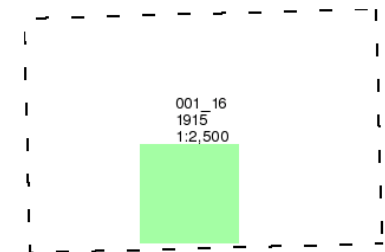
London

Published 1915

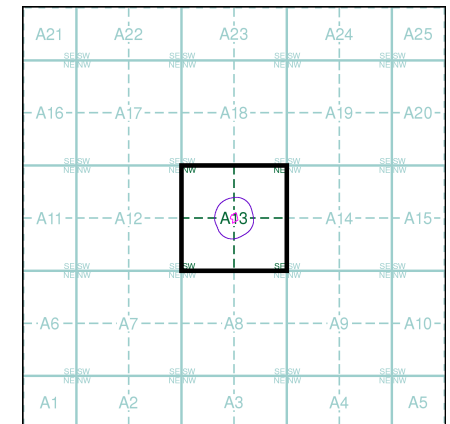
Source map scale - 1:2,500

The historical maps shown were reproduced from maps predominantly held at the scale adopted for England, Wales and Scotland in the 1840's. In 1854 the 1:2,500 scale was adopted for mapping urban areas and by 1896 it covered the whole of what were considered to be the cultivated parts of Great Britain. The published date given below is often some years later than the surveyed date. Before 1938, all OS maps were based on the Cassini Projection, with independent surveys of a single county or group of counties, giving rise to significant inaccuracies in outlying areas.

Map Name(s) and Date(s)



Historical Map - Segment A13



Order Details

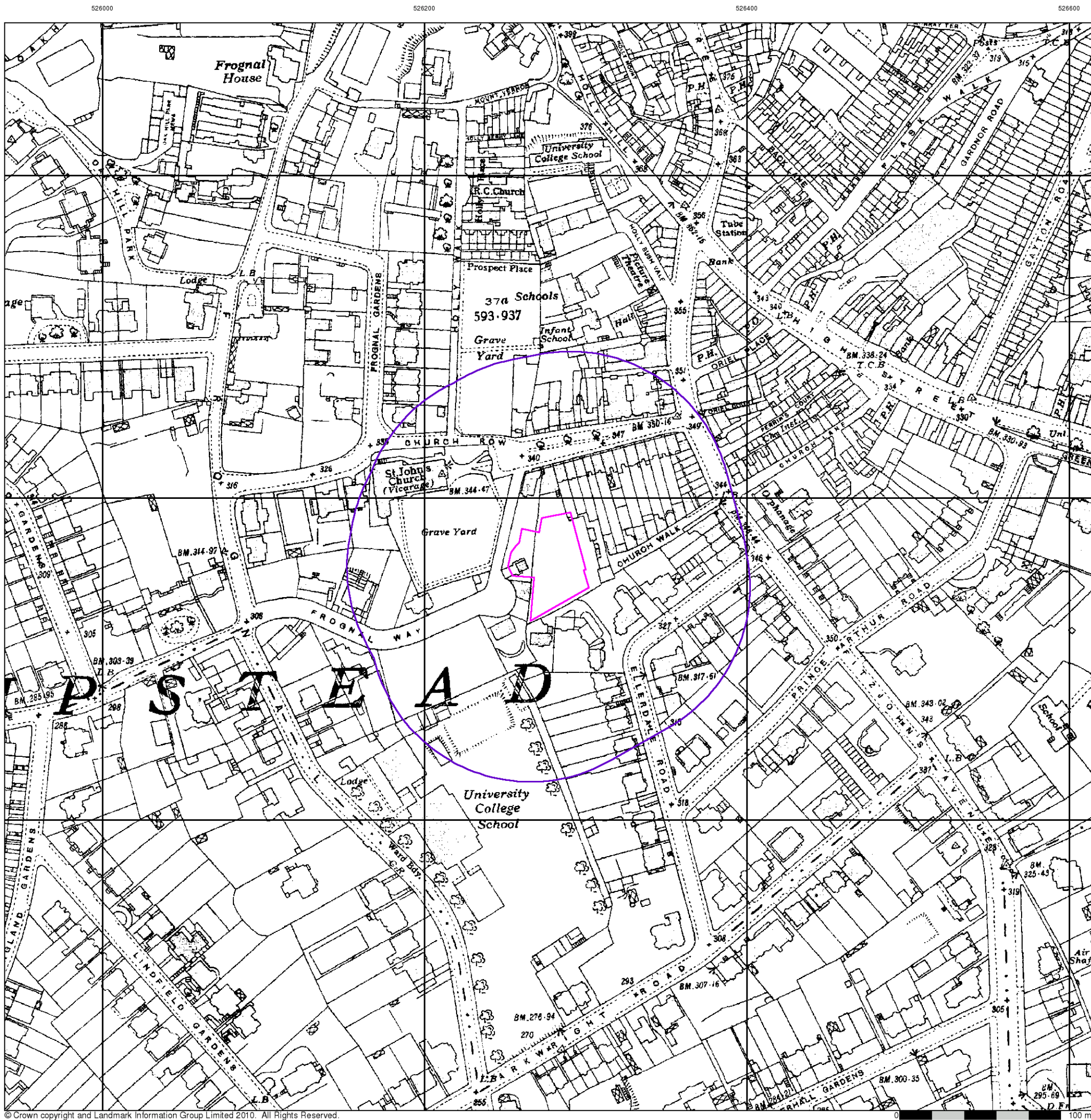
Order Number: 30089530_1_1
Customer Ref: J10021
National Grid Reference: 526280, 185560
Slice: A
Site Area (Ha): 0.2
Search Buffer (m): 100

Site Details

22 Frogmal Way, LONDON, NW3 6XE



Tel: 0844 844 9952
Fax: 0844 844 9951
Web: www.envirocheck.co.uk



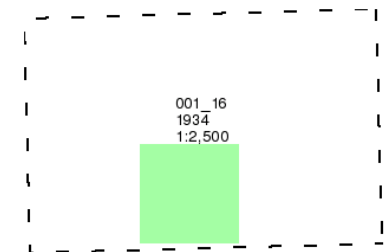
London

Published 1934

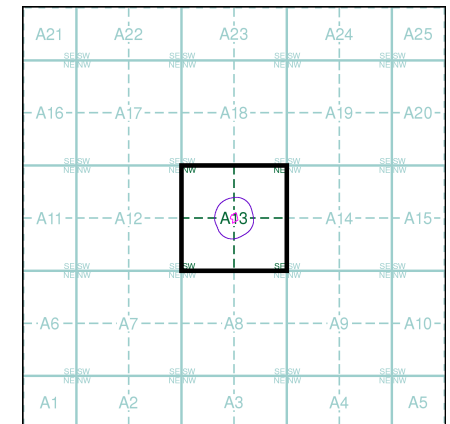
Source map scale - 1:2,500

The historical maps shown were reproduced from maps predominantly held at the scale adopted for England, Wales and Scotland in the 1840's. In 1854 the 1:2,500 scale was adopted for mapping urban areas and by 1896 it covered the whole of what were considered to be the cultivated parts of Great Britain. The published date given below is often some years later than the surveyed date. Before 1938, all OS maps were based on the Cassini Projection, with independent surveys of a single county or group of counties, giving rise to significant inaccuracies in outlying areas.

Map Name(s) and Date(s)



Historical Map - Segment A13



Order Details

Order Number: 30089530_1_1
Customer Ref: J10021
National Grid Reference: 526280, 185560
Slice: A
Site Area (Ha): 0.2
Search Buffer (m): 100

Site Details

22 Frogna Way, LONDON, NW3 6XE



Tel: 0844 844 9952
Fax: 0844 844 9951
Web: www.envirocheck.co.uk



© THE BRITISH LIBRARY BOARD. ALL RIGHTS RESERVED. Licence No:8048



Historical Aerial Photography

Published 1946 - 1949

Source map scale - 1:1,250

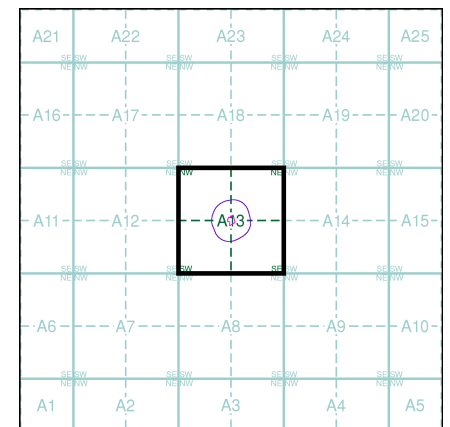
The Historical Aerial Photos were produced by the Ordnance Survey at a scale of 1:1,250 and 1:10,560 from Air Force photography. They were produced between 1944 and 1951 as an interim measure, pending preparation of conventional mapping, due to post war resource shortages. New security measures in the 1950's meant that every photograph was re-checked for potentially unsafe information with security sites replaced by fake fields or clouds. The original editions were withdrawn and only later made available after a period of fifty years although due to the accuracy of the editing, without viewing both revisions it is not easy to spot the edits. Where available Landmark have included both revisions.

© THE BRITISH LIBRARY BOARD. ALL RIGHTS RESERVED. Licence No:8048

Map Name(s) and Date(s)

TO2585NE 1946 1:1,250	TO2585NW 1949 1:1,250	TO2585NE 1949 1:1,250
TO2585SE 1946 1:1,250	TO2585SW 1946 1:1,250	TO2585SE 1946 1:1,250

Historical Aerial Photography - Segment A13



Order Details

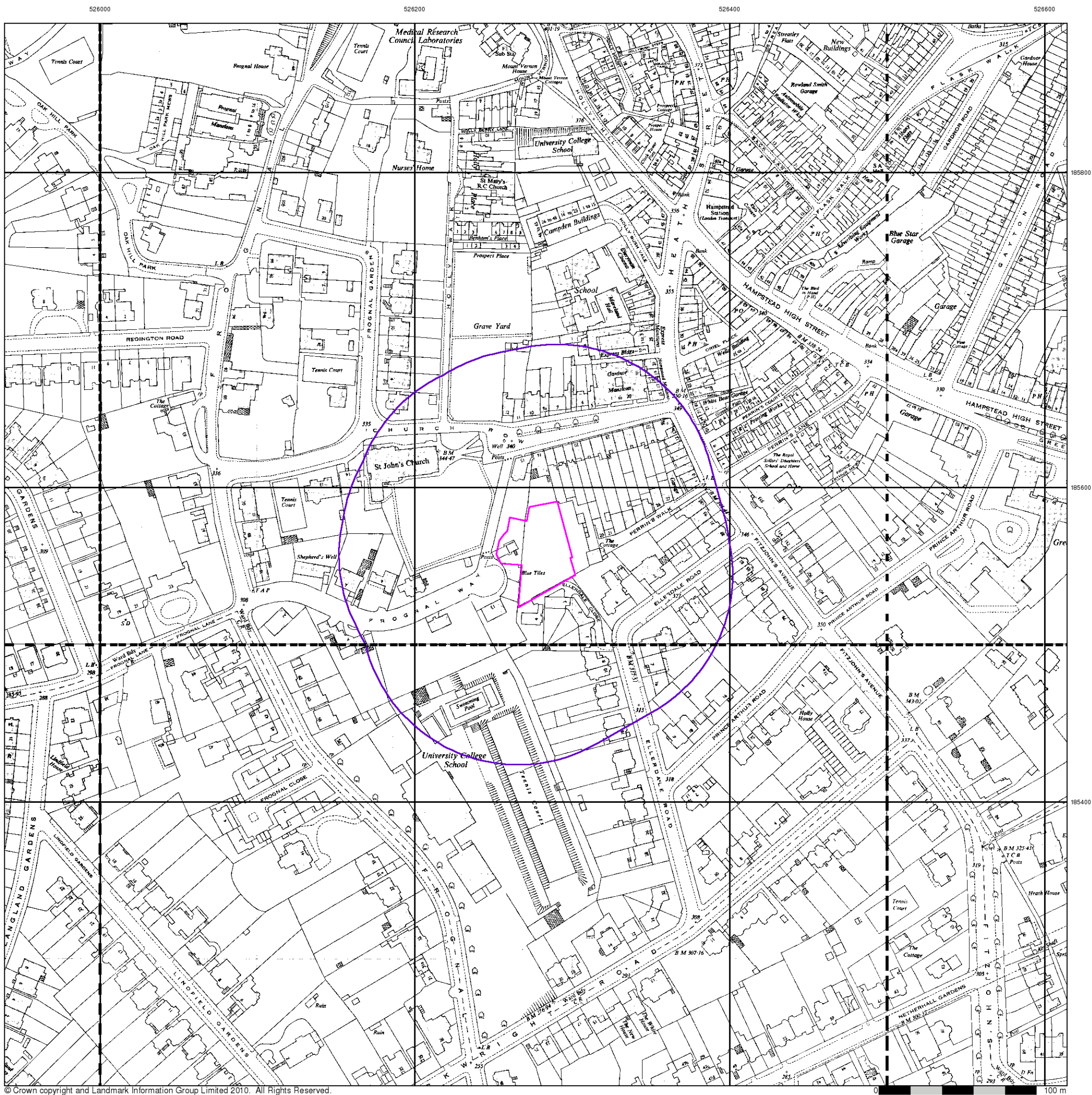
Order Number: 30089530_1_1
Customer Ref: J10021
National Grid Reference: 526280, 185560
Slice: A
Site Area (Ha): 0.2
Search Buffer (m): 100

Site Details

22 Froggnal Way, LONDON, NW3 6XE



Tel: 0844 844 9952
Fax: 0844 844 9951
Web: www.envirocheck.co.uk



Ordnance Survey Plan

Published 1954

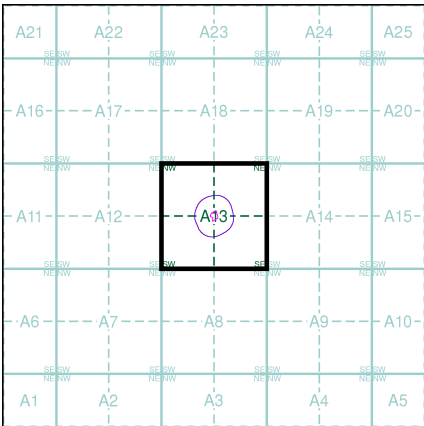
Source map scale - 1:1,250

The historical maps shown were reproduced from maps predominantly held at the scale adopted for England, Wales and Scotland in the 1840's. In 1854 the 1:2,500 scale was adopted for mapping urban areas and by 1896 it covered the whole of what were considered to be the cultivated parts of Great Britain. The published date given below is often some years later than the surveyed date. Before 1938, all OS maps were based on the Cassini Projection, with independent surveys of a single county or group of counties, giving rise to significant inaccuracies in outlying areas.

Map Name(s) and Date(s)

TQ2585NE 1954 1:1,250	TQ2685NW 1954 1:1,250	TQ2685NE 1954 1:1,250
TQ2585SE 1954 1:1,250	TQ2685SW 1954 1:1,250	TQ2685SE 1954 1:1,250

Historical Map - Segment A13



Order Details

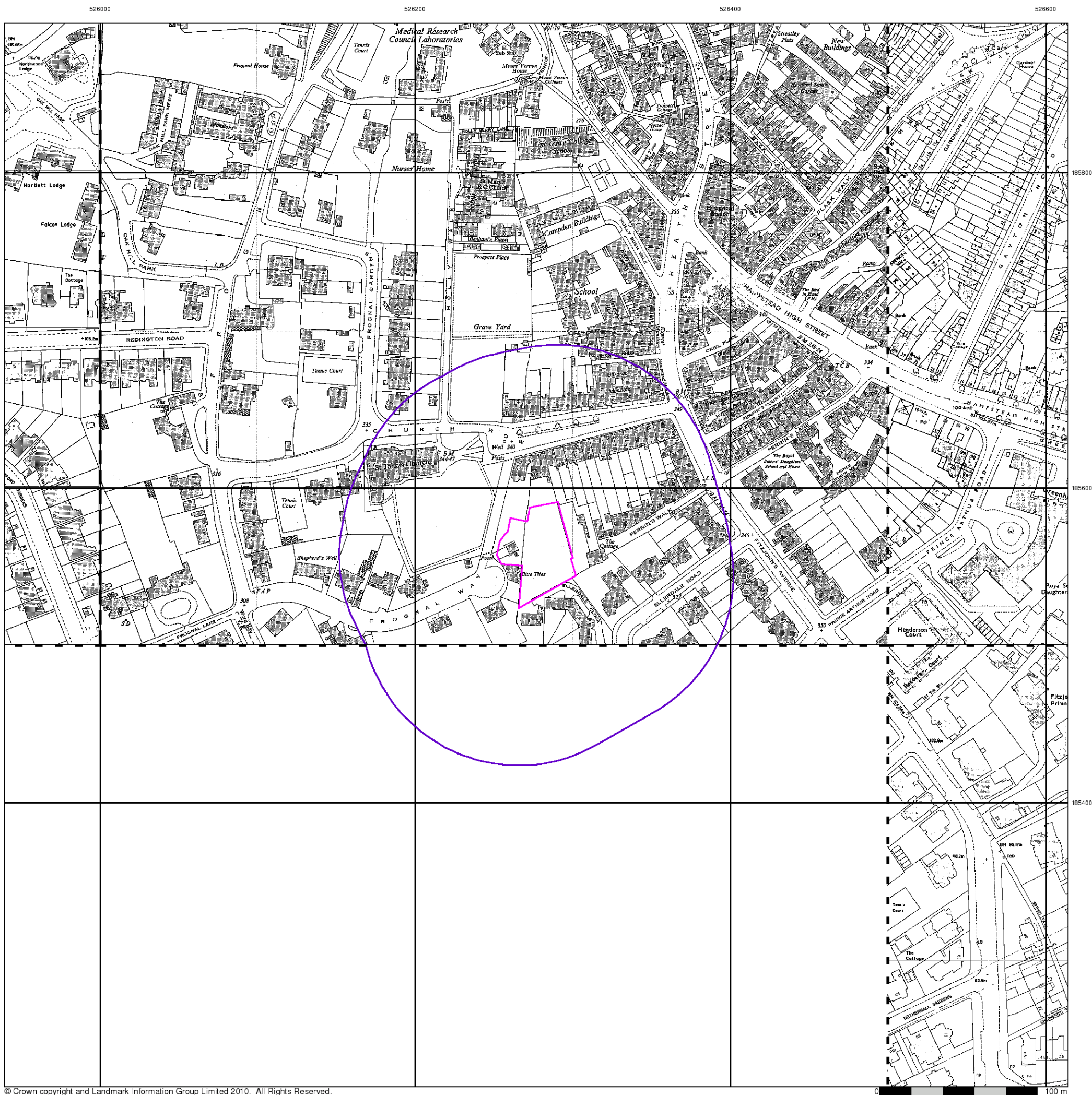
Order Number: 30089530_1_1
Customer Ref: J10021
National Grid Reference: 526280, 185560
Slice: A
Site Area (Ha): 0.2
Search Buffer (m): 100

Site Details

22 Froggnal Way, LONDON, NW3 6XE



Tel: 0844 844 9952
Fax: 0844 844 9951
Web: www.envirocheck.co.uk



Additional SIMs

Published 1954 - 1987

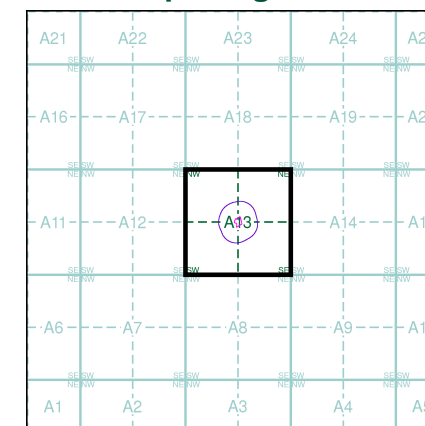
Source map scale - 1:1,250

The SIM cards (Ordnance Survey's 'Survey of Information on Microfilm') are further, minor editions of mapping which were produced and published in between the main editions as an area was updated. They date from 1947 to 1994, and contain detailed information on buildings, roads and land-use. These maps were produced at both 1:2,500 and 1:1,250 scales.

Map Name(s) and Date(s)

TQ2585NE 1966 1:1,250	TQ2685NW 1954 1:1,250	TQ2685NE 1987 1:1,250
		TQ2685SE 1986 1:1,250

Historical Map - Segment A13



Order Details

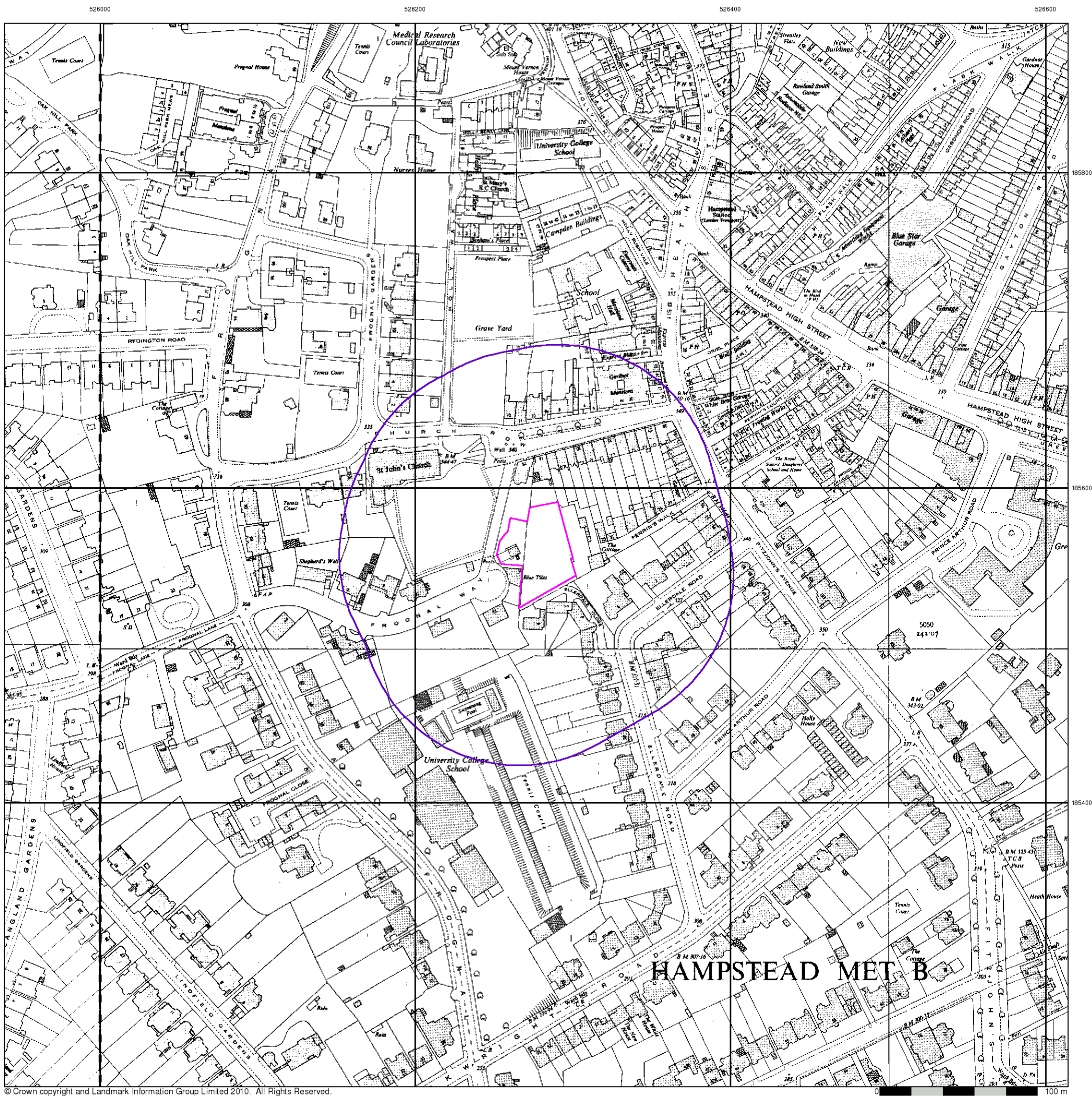
Order Number: 30089530_1_1
Customer Ref: J10021
National Grid Reference: 526280, 185560
Slice: A
Site Area (Ha): 0.2
Search Buffer (m): 100

Site Details

22 Froggnal Way, LONDON, NW3 6XE



Tel: 0844 844 9952
Fax: 0844 844 9951
Web: www.envirocheck.co.uk



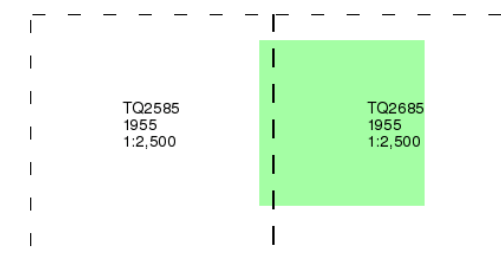
Ordnance Survey Plan

Published 1955

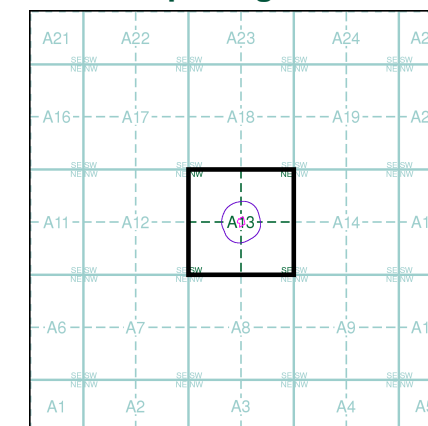
Source map scale - 1:2,500

The historical maps shown were reproduced from maps predominantly held at the scale adopted for England, Wales and Scotland in the 1840's. In 1854 the 1:2,500 scale was adopted for mapping urban areas and by 1896 it covered the whole of what were considered to be the cultivated parts of Great Britain. The published date given below is often some years later than the surveyed date. Before 1938, all OS maps were based on the Cassini Projection, with independent surveys of a single county or group of counties, giving rise to significant inaccuracies in outlying areas.

Map Name(s) and Date(s)



Historical Map - Segment A13

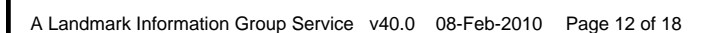


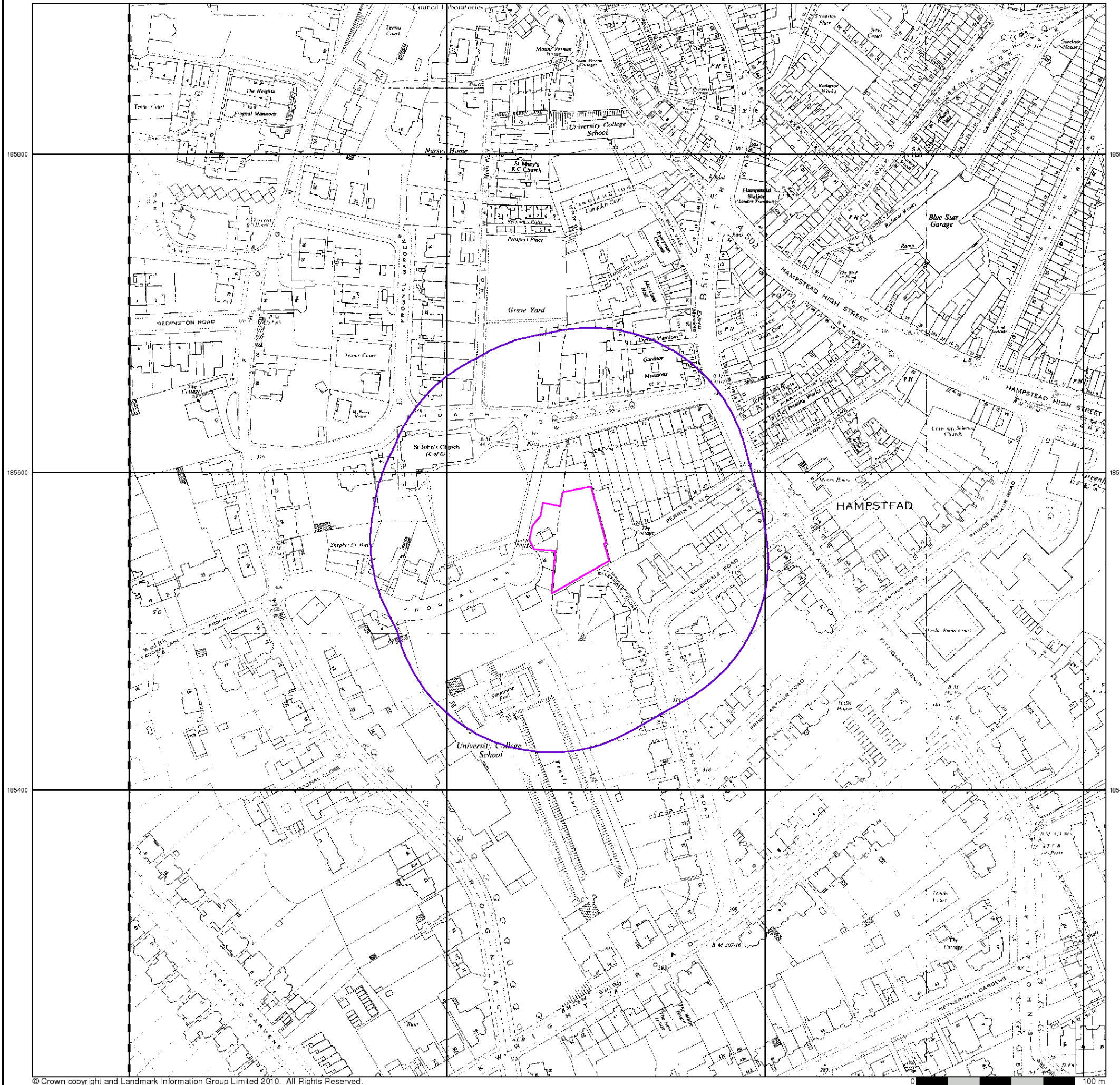
Order Details

Order Number: 30089530_1_1
Customer Ref: J10021
National Grid Reference: 526280, 185560
Slice: A
Site Area (Ha): 0.2
Search Buffer (m): 100

Site Details

22 Frognal Way, LONDON, NW3 6XE





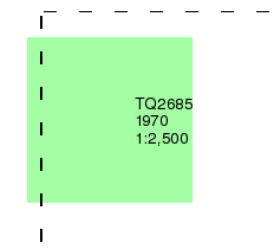
Ordnance Survey Plan

Published 1970

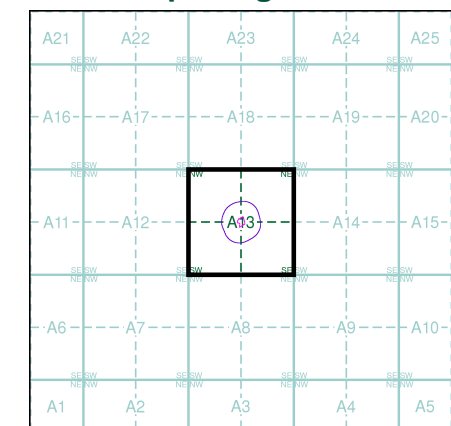
Source map scale - 1:2,500

The historical maps shown were reproduced from maps predominantly held at the scale adopted for England, Wales and Scotland in the 1840's. In 1854 the 1:2,500 scale was adopted for mapping urban areas and by 1896 it covered the whole of what were considered to be the cultivated parts of Great Britain. The published date given below is often some years later than the surveyed date. Before 1938, all OS maps were based on the Cassini Projection, with independent surveys of a single county or group of counties, giving rise to significant inaccuracies in outlying areas.

Map Name(s) and Date(s)



Historical Map - Segment A13

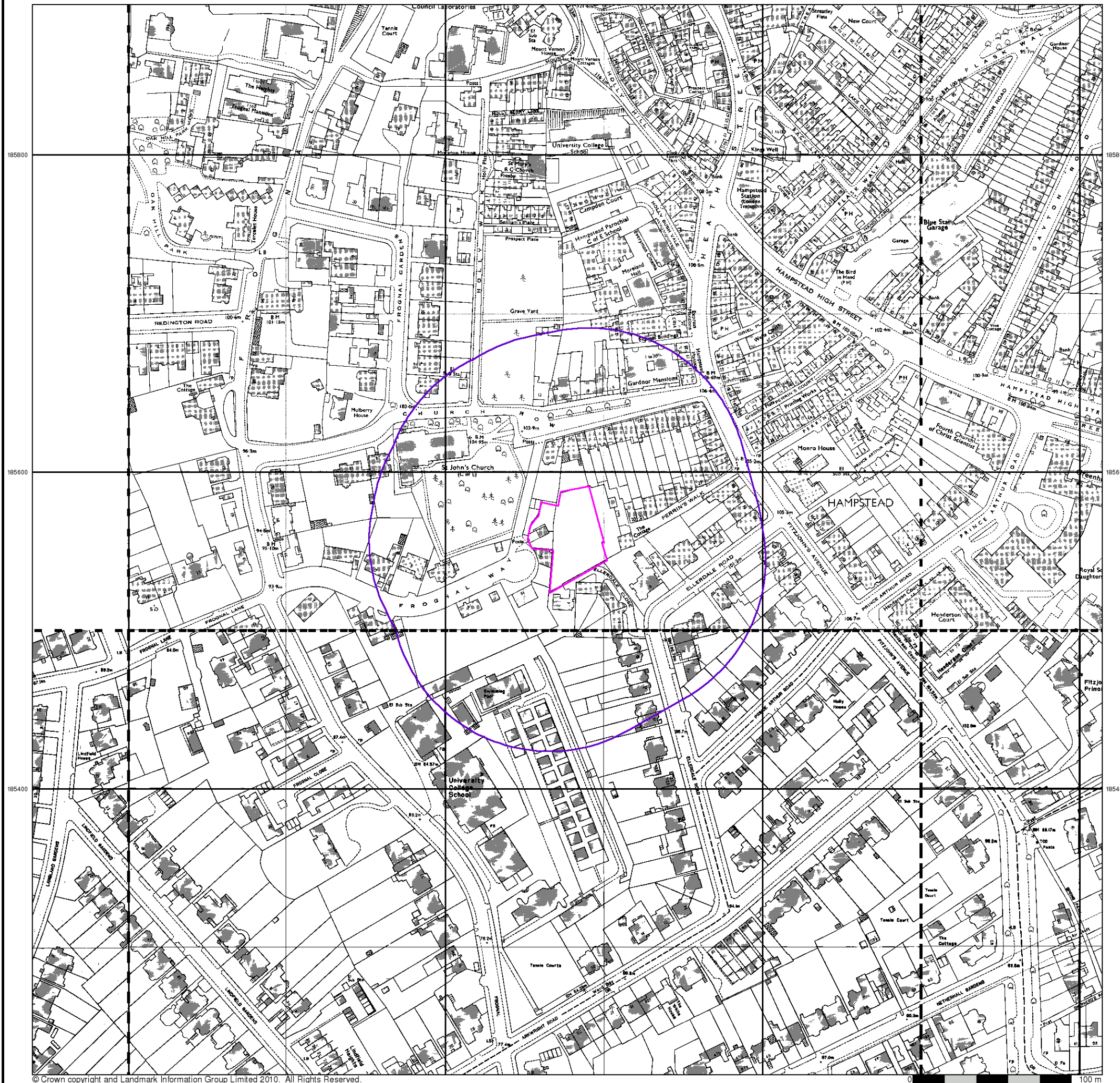


Order Details

Order Number: 30089530_1_1
 Customer Ref: J10021
 National Grid Reference: 526280, 185560
 Slice: A
 Site Area (Ha): 0.2
 Search Buffer (m): 100

Site Details

22 Frognal Way, LONDON, NW3 6XE



Ordnance Survey Plan

Published 1973 - 1981

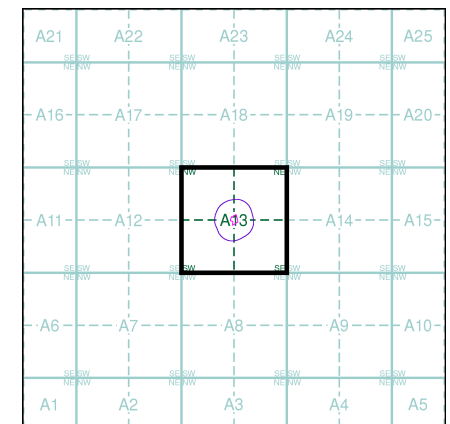
Source map scale - 1:1,250

The historical maps shown were reproduced from maps predominantly held at the scale adopted for England, Wales and Scotland in the 1840's. In 1854 the 1:2,500 scale was adopted for mapping urban areas and by 1896 it covered the whole of what were considered to be the cultivated parts of Great Britain. The published date given below is often some years later than the surveyed date. Before 1938, all OS maps were based on the Cassini Projection, with independent surveys of a single county or group of counties, giving rise to significant inaccuracies in outlying areas.

Map Name(s) and Date(s)

TQ2685NW	TQ2685NE
1974	1973
1:1,250	1:1,250
TQ2585SE	TQ2685SW
1981	1979
1:1,250	1:1,250
	TQ2685SE
	1979
	1:1,250

Historical Map - Segment A13



Order Details

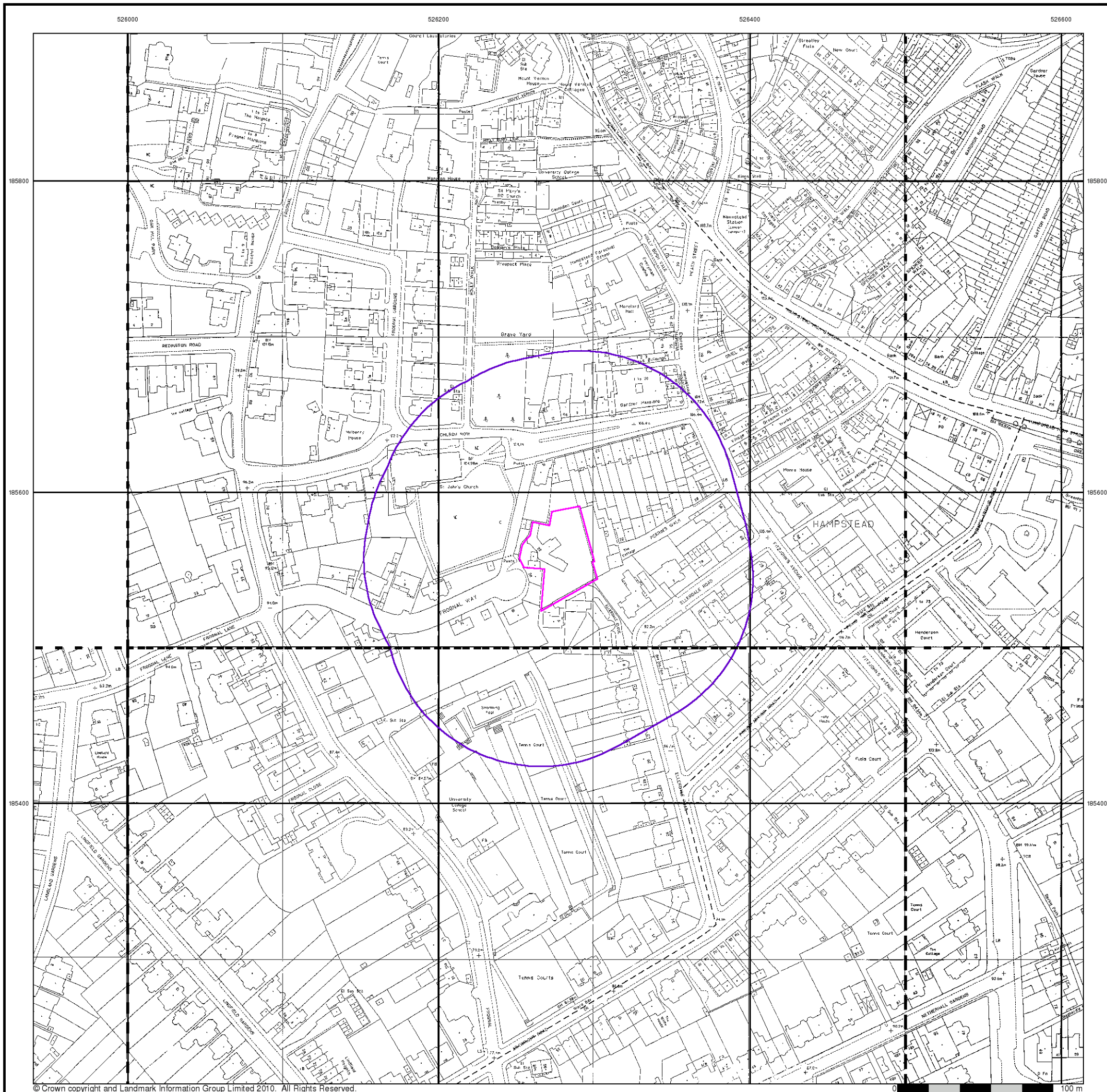
Order Number: 30089530_1_1
 Customer Ref: J10021
 National Grid Reference: 526280, 185560
 Slice: A
 Site Area (Ha): 0.2
 Search Buffer (m): 100

Site Details

22 Froggall Way, LONDON, NW3 6XE



Tel: 0844 844 9952
 Fax: 0844 844 9951
 Web: www.envirocheck.co.uk



Large-Scale National Grid Data

Published 1991

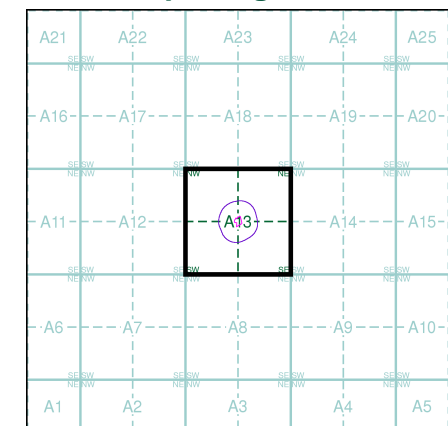
Source map scale - 1:1,250

'Large Scale National Grid Data' superseded SIM cards (Ordnance Survey's 'Survey of Information on Microfilm') in 1992, and continued to be produced until 1999. These maps were the fore-runners of digital mapping and so provide detailed information on houses and roads, but tend to show less topographic features such as vegetation. These maps were produced at both 1:2,500 and 1:1,250 scales.

Map Name(s) and Date(s)

	TQ2685NW 1991 1:1,250	TQ2685NE 1991 1:1,250
TQ2585SE 1991 1:1,250	TQ2685SW 1991 1:1,250	TQ2685SE 1991 1:1,250

Historical Map - Segment A13



Order Details

Order Number: 30089530_1_1
Customer Ref: J10021
National Grid Reference: 526280, 185560
Slice: A
Site Area (Ha): 0.2
Search Buffer (m): 100

Site Details

22 Frognal Way, LONDON, NW3 6XE



Tel: 0844 844 9952
Fax: 0844 844 9951
Web: www.envirocheck.co.uk

Slope Stability Analysis

Slope Stability sections

Site 22 Frogmal Way, London, NW3

Client Ironside & Malone Design & Build 2 Ltd

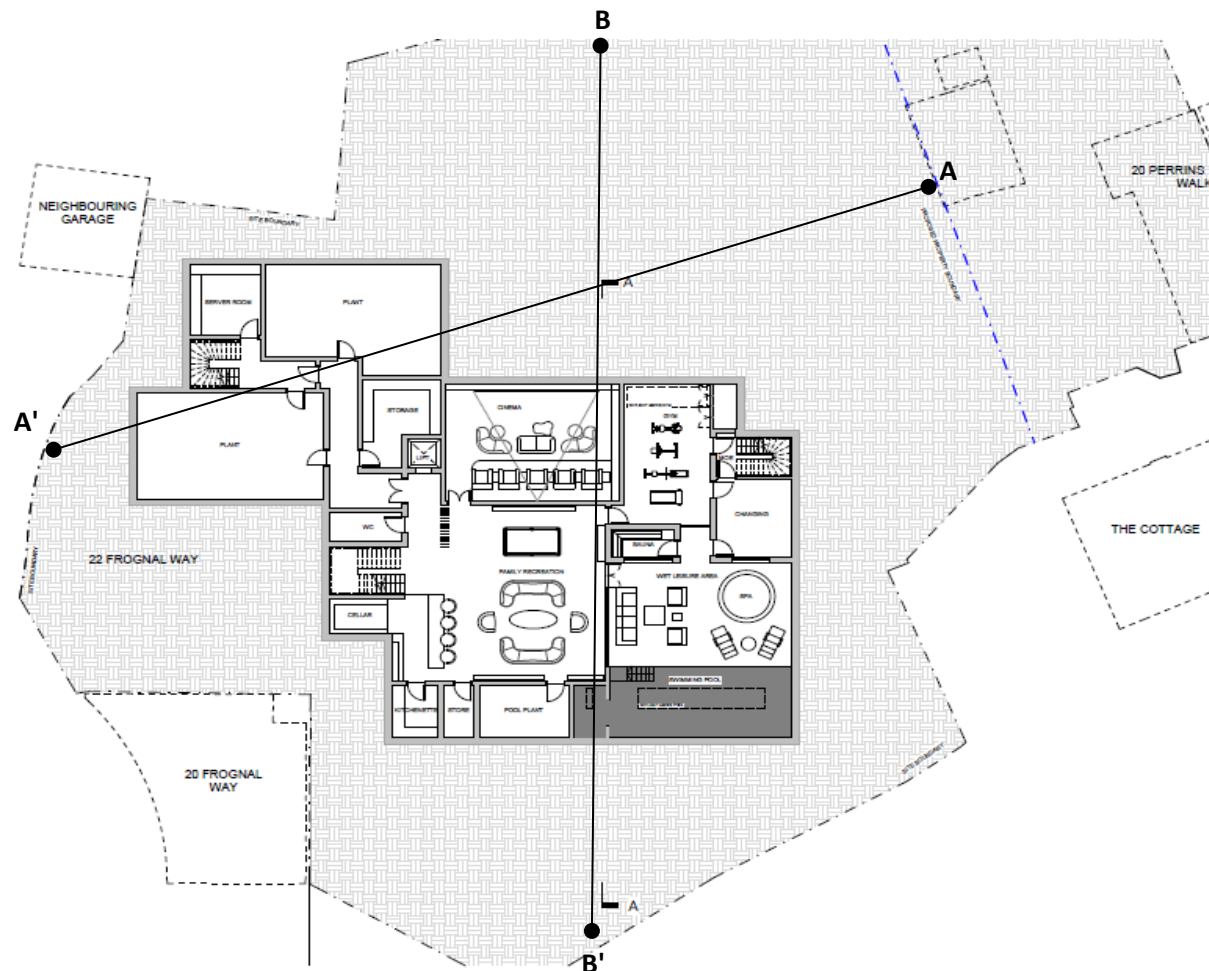
Engineer Price & Myers

Job Number

J14302

Sheet

1 / 1



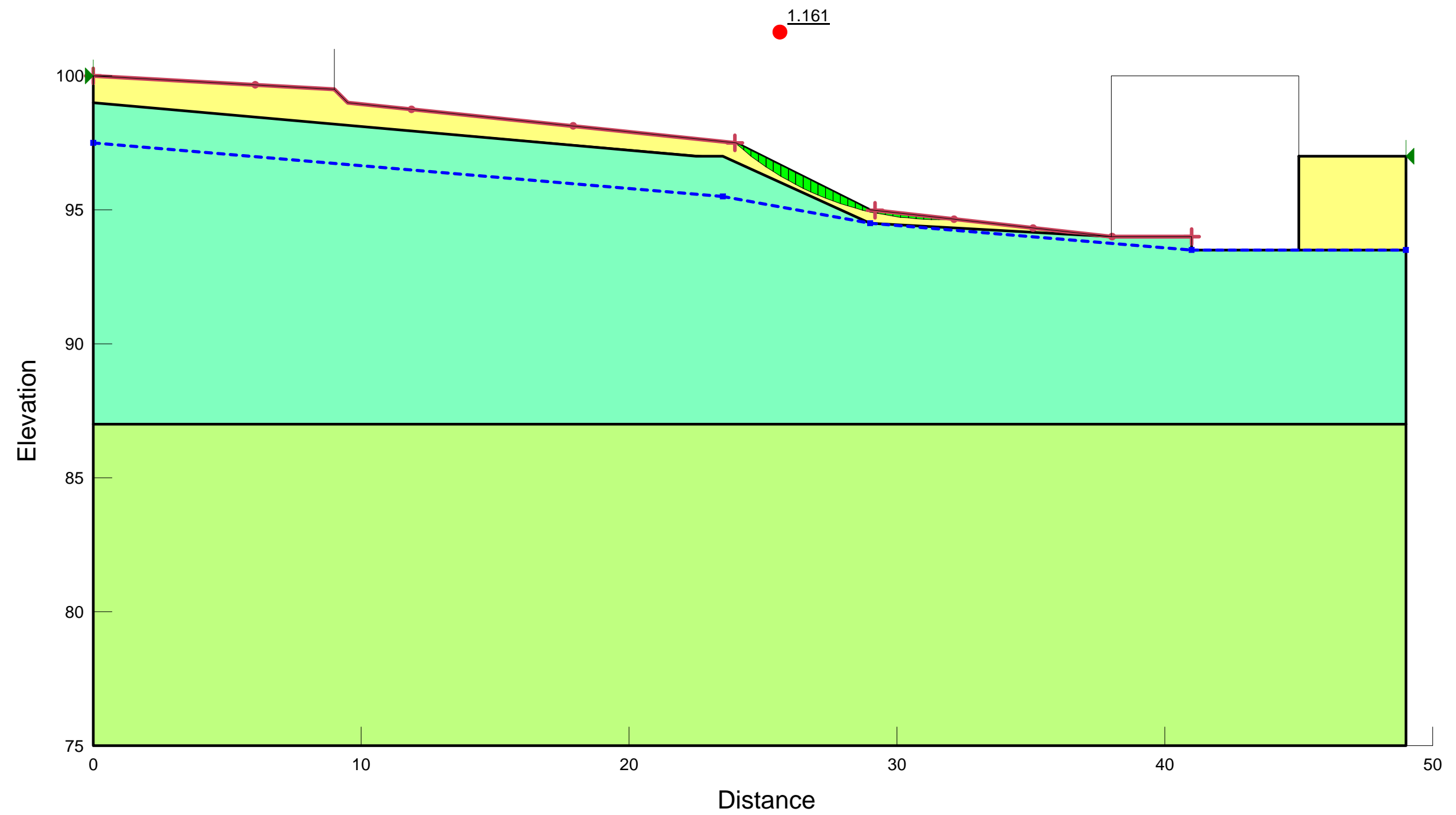
Approximate Scale in metres

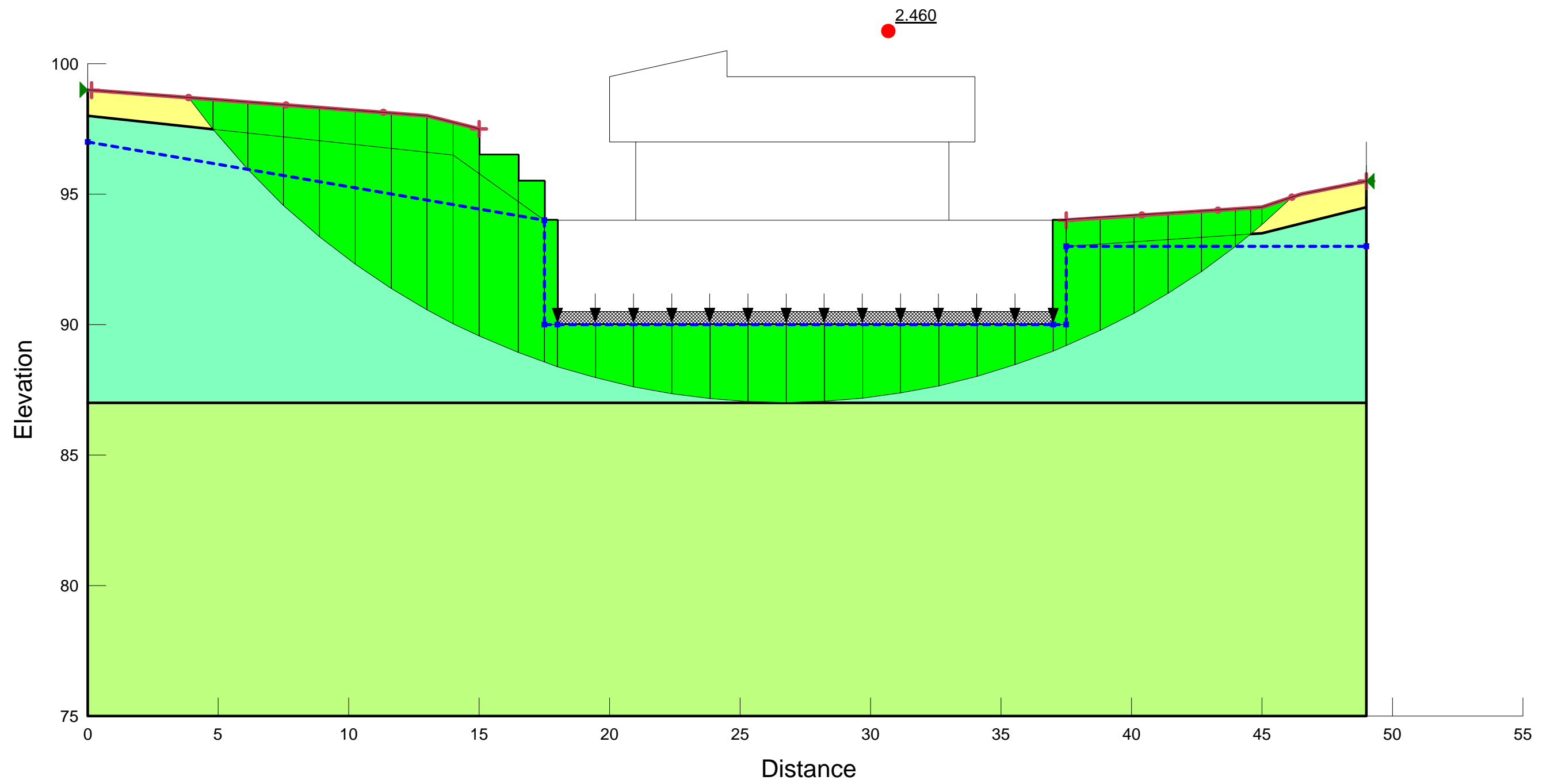
Key

A-A' = Existing Slope

B-B' Proposed Slope

NB: Critical examples chosen for each case, which include steepest sections of existing / proposed slopes

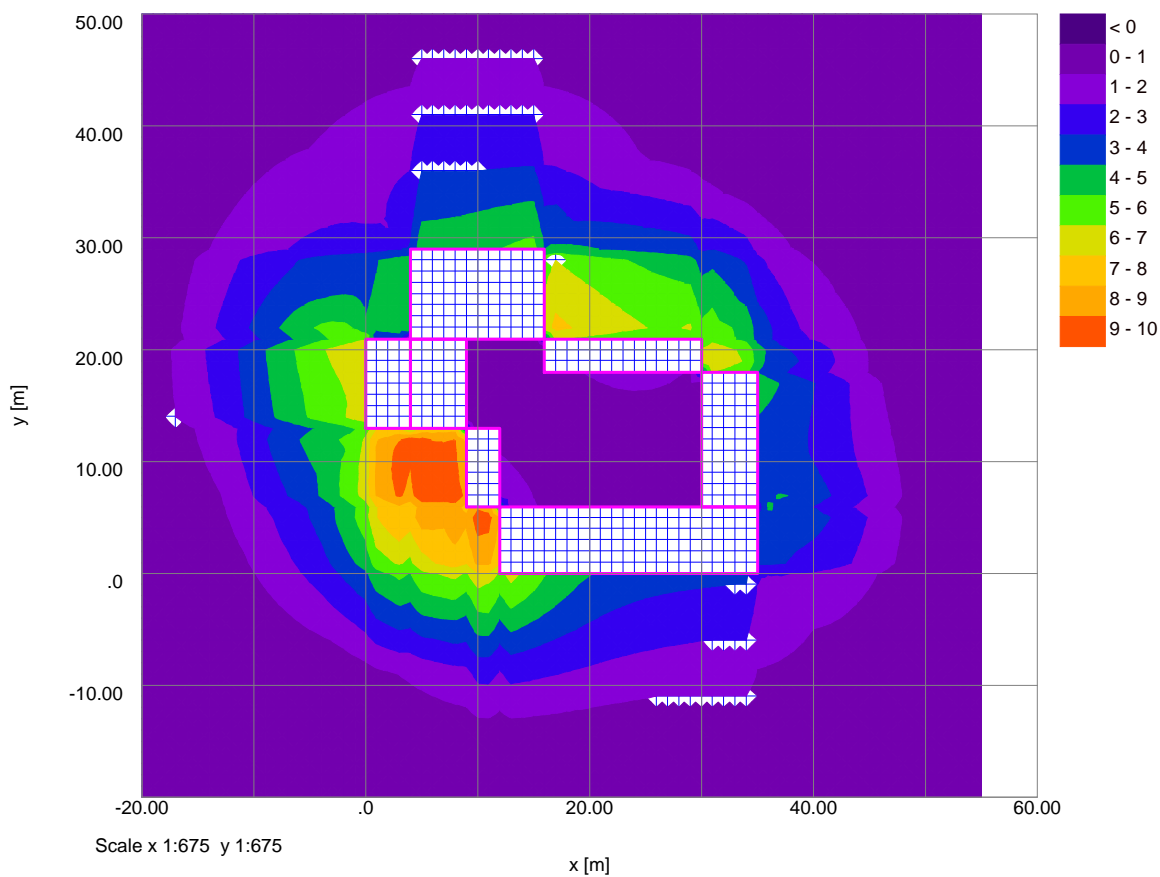




Soil Displacement Model Results

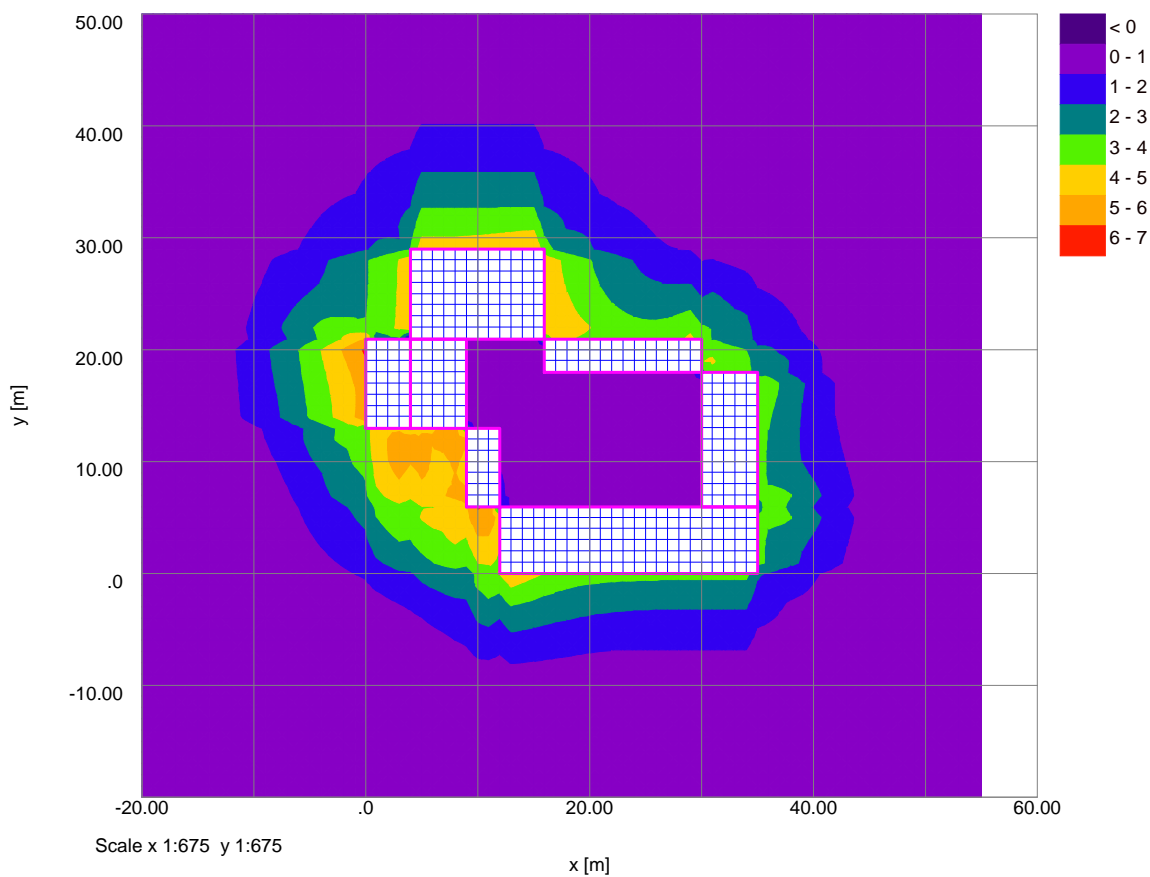
Job No.	Sheet No.	Rev.
J14302		
Drg. Ref.		
Made by MP	Date 02-Apr-2015	Checked

Vertical Settlement Contours: Grid 1 (level 94.000m) (Interval 1mm)



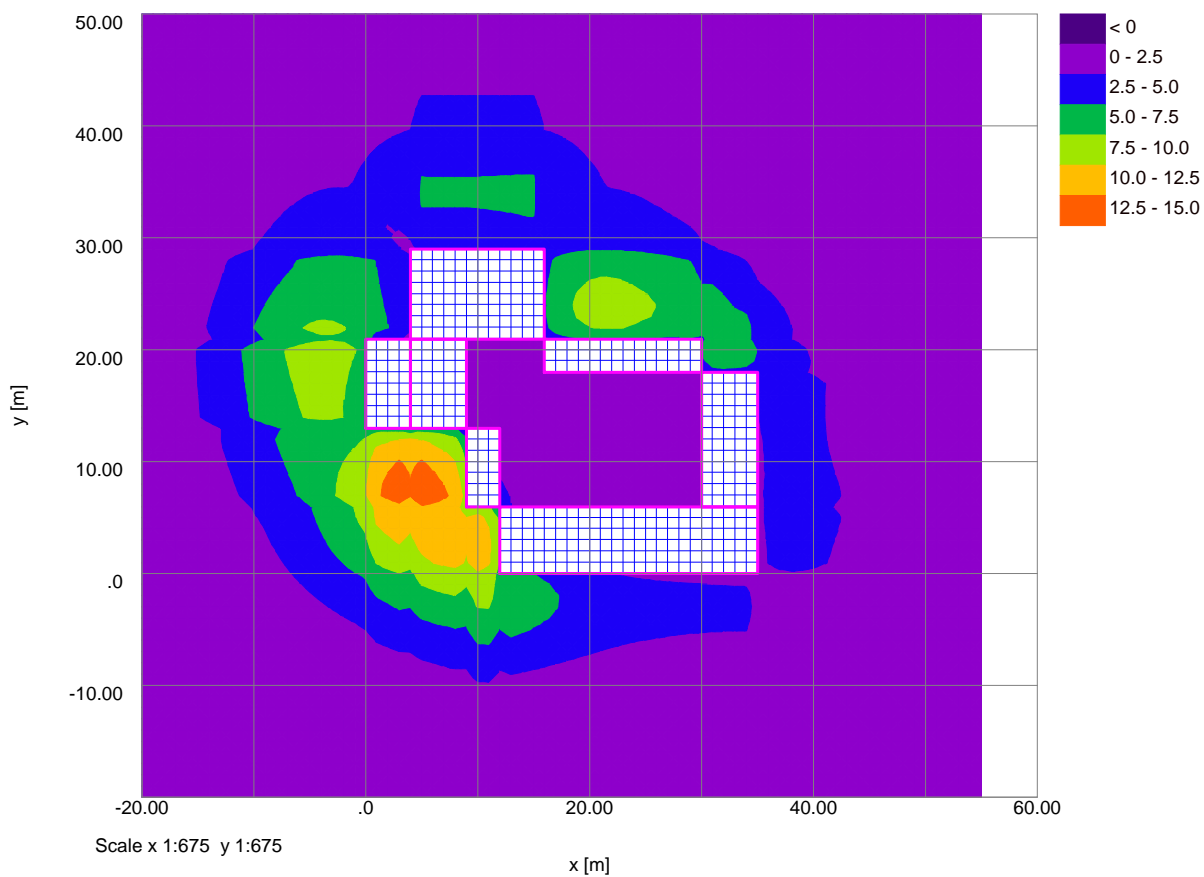
Job No.	Sheet No.	Rev.
J14302		
Drg. Ref.		
Made by MP	Date 02-Apr-2015	Checked

Horizontal Displacement Contours: Grid 1 (level 94.000m) Interval 1mm



Job No.	Sheet No.	Rev.
J14302		
Drg. Ref.		
Made by MP	Date 02-Apr-2015	Checked

Vertical Settlement Contours: Grid 1 (level 94.000m) (Interval 2.5mm)



Job No.	Sheet No.	Rev.
J14302		
Drg. Ref.		
Made by MP	Date 02-Apr-2015	Checked

Horizontal Displacement Contours: Grid 1 (level 94.000m) Interval 5mm

