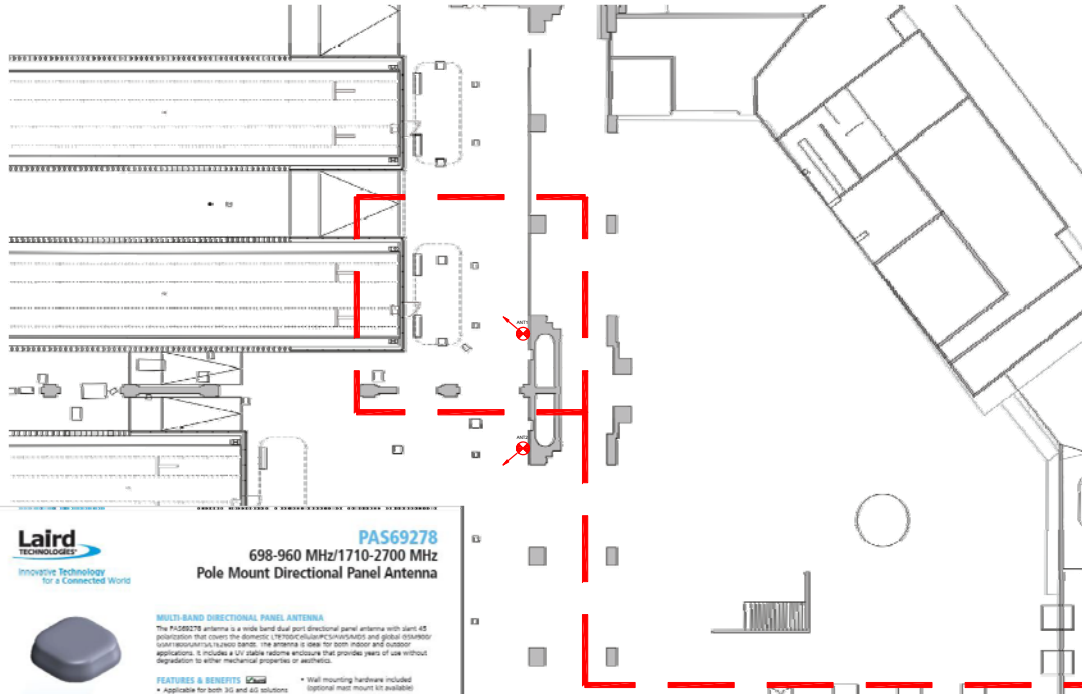


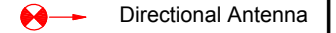


SITE LAYOUT PLAN

Scale 1/400



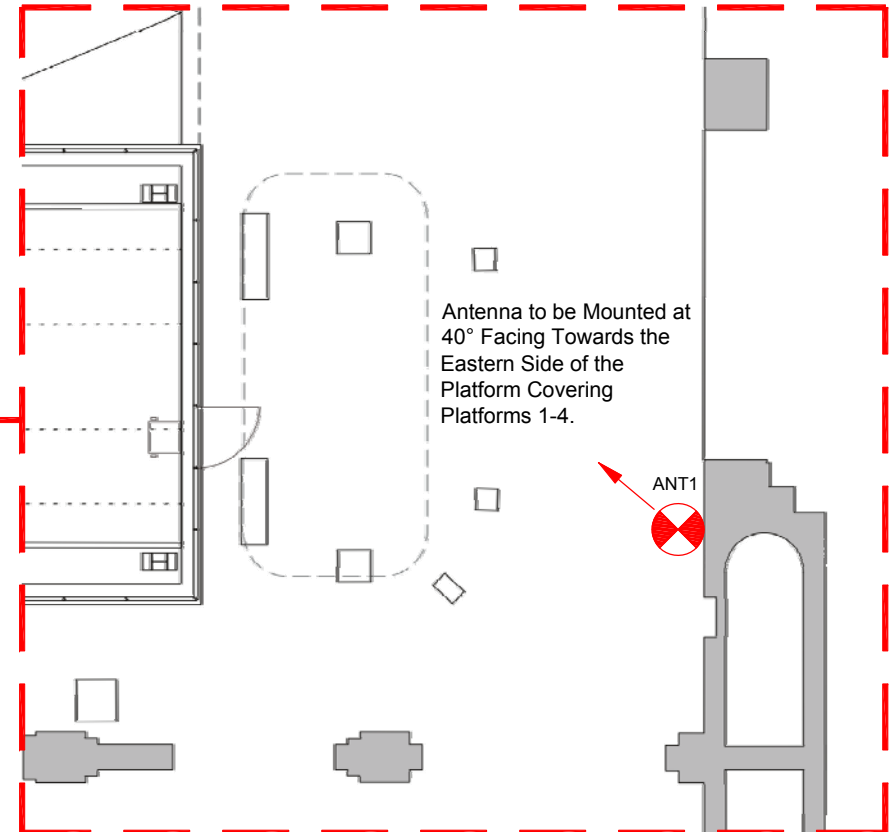
Legend



For Elevation See Drawing:
Telefonica/STS/IB/KC/0009

Western Concourse Ground Floor

Scale 1/100



Antenna to be Mounted at
40° Facing Towards the
Eastern Side of the
Platform Covering
Platforms 1-4.

ANT1

Laird
TECHNOLOGIES
Innovative Technology for a Connected World

PAS69278
698-960 MHz/1710-2700 MHz
Pole Mount Directional Panel Antenna

MULTI-BAND DIRECTIONAL PANEL ANTENNA

The PAS69278 antenna is a wide band dual port directional panel antenna with slant 45° polarization that covers the domestic LTE FDD cellular (700/1700) and global GSM/UMTS/LTE cellular bands. The antenna is ideal for both indoor and outdoor applications. It includes a UV stable radome enclosure that provides years of use without degradation by other mechanical properties or weathering.

FEATURES & BENEFITS

- Applicable for both 3G and 4G solutions
- Domestic LTE FDD band and Global LTE FDD band
- Wireless 2.3G/3G/4G bands
- Domestic Cellular and Global GSM
- Weatherproof UV stable radome
- Wall mounting hardware included (optional mast mount kit available)
- Conformance to RoHS

APPLICATIONS

- Wireless Terminal, Point-of-Sale, Machine-to-Machine
- Automatic Meter Reading and Home Security

SPECIFICATIONS

TYPICAL ELECTRICAL SPECIFICATIONS	
Frequency	698 - 960 MHz / 1710 - 2700 MHz
Gain	2.5 dBi
Gain	698 - 960 MHz: 7.5 - 9 dBi, 1710 - 2700 MHz: 5.7 - 6.5 dBi
Average Efficiency	698 - 960 MHz: 50% - 67%, 1710 - 2700 MHz: 40% - 55%
3 dB Beamwidth (vertical plane)	698 - 960 MHz: 55° - 57°, 1710 - 2700 MHz: 50° - 50°
3 dB Beamwidth (horizontal plane)	698 - 960 MHz: 55° - 57°, 1710 - 2700 MHz: 50° - 50°
dB Gain, Coaxial	698 - 960 MHz: > 25 dB, 1710 - 2700 MHz: > 17 dB
Coax polarization, Axial	698 - 960 MHz: > 25 dB, 1710 - 2700 MHz: > 17 dB, typical 23 dB
Isolation	> 25 dB
Polarization	Slant 45°
Maximal impedance	50 Ohms
Power	2 x 10W/20W
RF Connector	Dual Type N female
RF Type	IP65
Environmental Conditions	ETSI EN 300 019 & 4, Gsm & U
Mount Type	Wall/Mast, mounting hardware (Mast mount)
Radome and Base Finish	GG10-1000 (UV resistant)
Radome & Base color	White, color code: (RAL) 9003/9004
Material Substrate Compliance	RoHS Compliant
Temperature	-40°C to +70°C
Dimensions	238 x 238 x 45 mm
Weight	1.80 kg

CABLES AND CONNECTIONS

RF Connector	Cable Length	Shielding
NC69278-1710F	Dual 91 cm (36")	Dual Type N female
NC69278-1710F	900 (Direct connect)	Dual Type N female

global solutions, local support.
Atlanta: +1 847 838 8007
UK: +44 (0) 1453 890000
Europe: +44 (0) 1453 890000
USA: +1 847 838 8007
Asia: +66 21 5855 0827 127
www.lairdtech.com

Rev	Date	Description	Eng	Chk	Drn
01		Issued for Comment/Approval	EO	DC	MS

Client **Telefonica**

Contract
CSR 3163
Kings Cross Station
London
N1C 4TB

Engineer
Eoin O'Neill

Checked By
David Connolly

Drawn By
Mark Sharman

Title
In-Building Distributed Antenna System
Ground & Mezzanine
Infrastructure Drawing
Antenna 1 Location

Status
Comment/Approval

Issue Date
12/06/15

0 1m 5m
Scale Bar 1:100

Drawing No
Telefonica/STS/IB/KC/0008

Revision
01