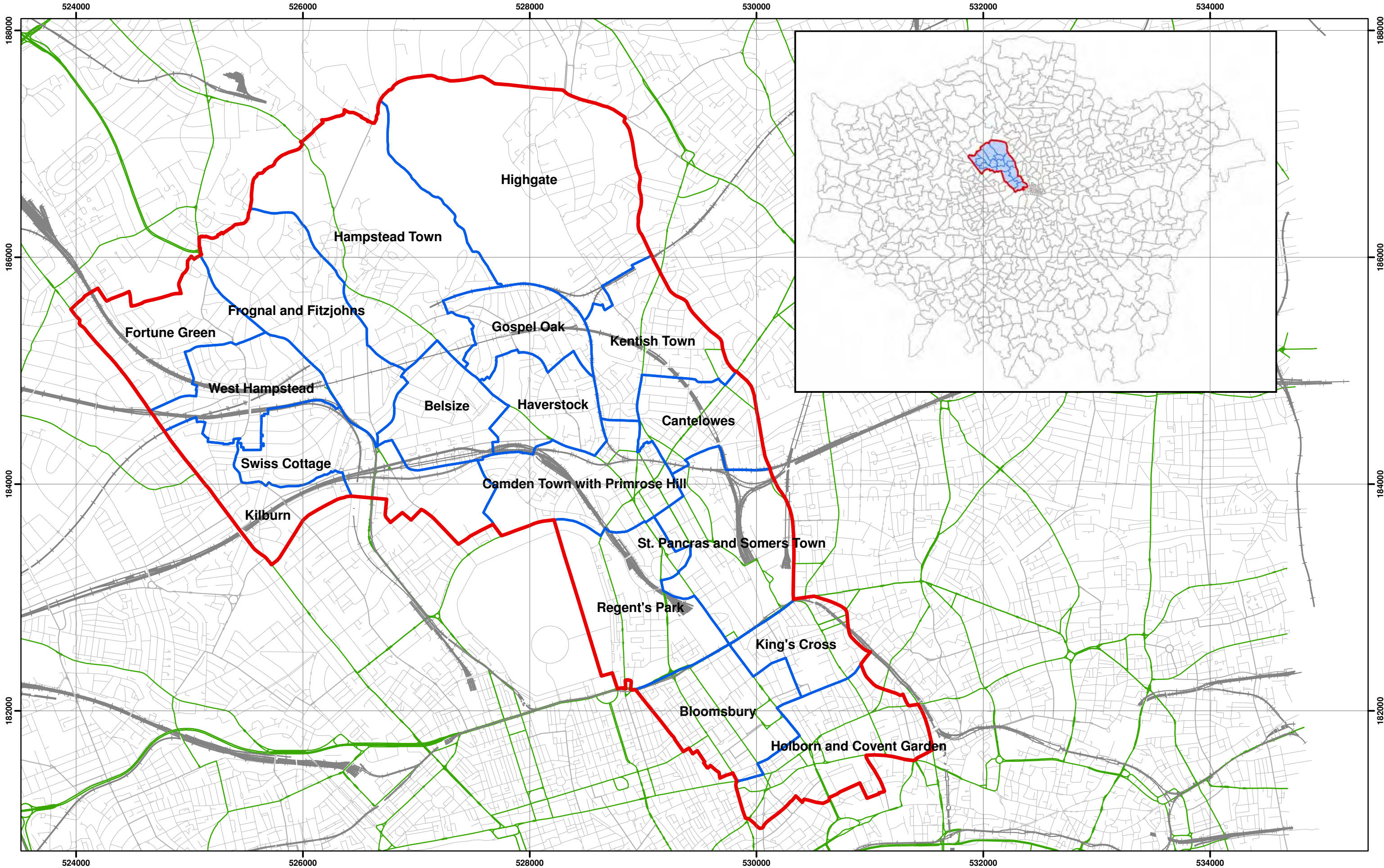


Appendix A

Screening – Figures, Charts / Maps



524000

526000

528000

530000

532000

534000



Scale at A3: 1:30,000

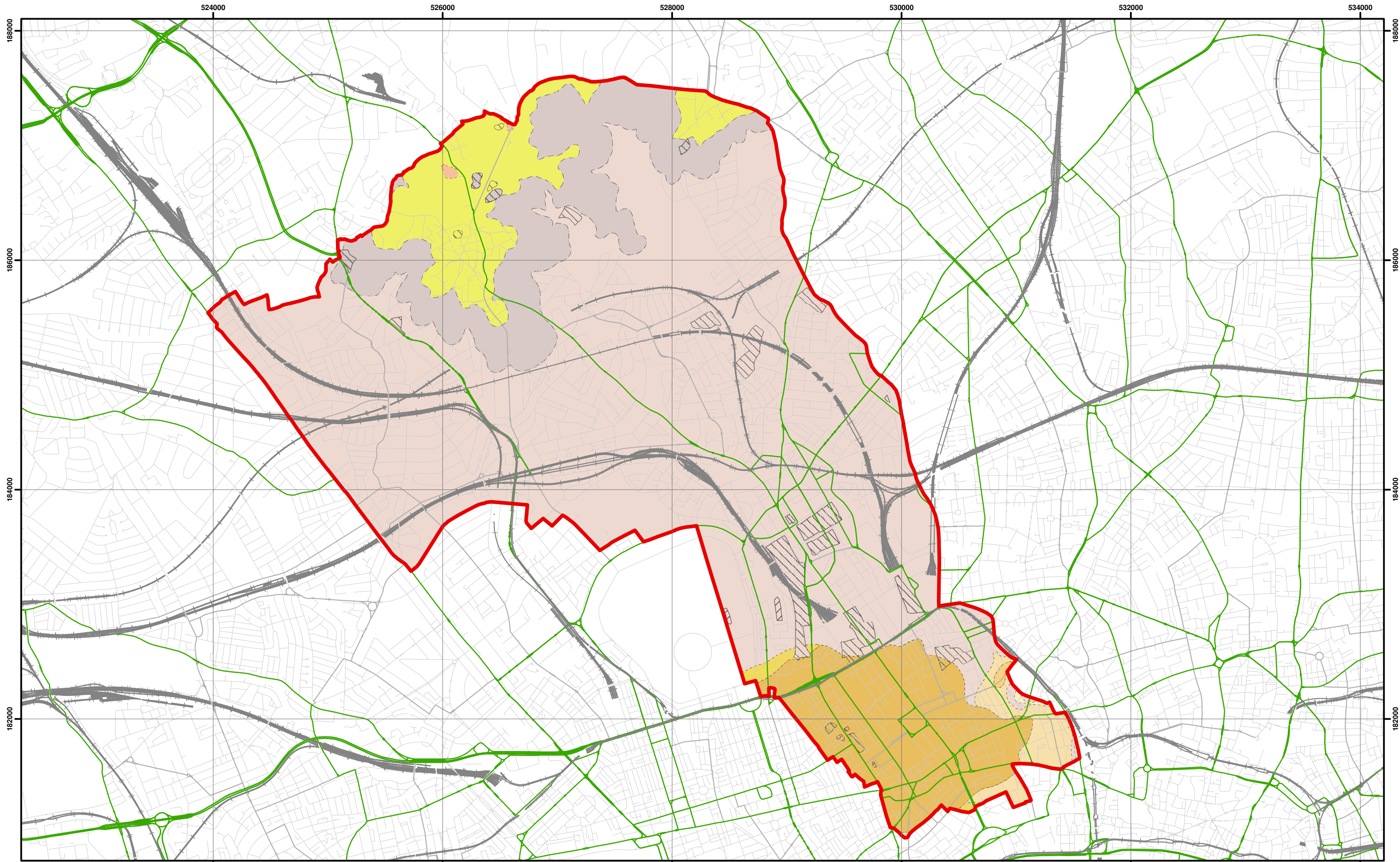
Coordinate System:
British National Grid
GCS_OSGB_1936

Legend

- London Borough of Camden
- Camden Wards
- Railway Lines
- A Roads

**Camden Geological, Hydrogeological
and Hydrological Study**
Camden Administrative Boundaries





Data source - BGS Mapping - Scale 1:10,000



Scale at A3: 1:30,000

Coordinate System:
British National Grid
GCS_OSGB_1936

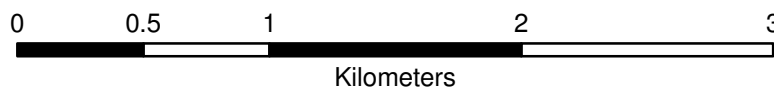
Legend

- London Borough of Camden
- Railway Lines
- A Roads

- BGS 1:10K Artificial Ground**
- MADE GROUND
 - WORKED GROUND

- BGS 1:10K Drift Geology**
- ALLUVIUM
 - HACKNEY GRAVEL FORMATION
 - LANGLEY SILT FORMATION
 - LYNCH HILL GRAVEL FORMATION
 - STANMORE GRAVEL FORMATION

- BGS 1:10K Solid Geology**
- BAGSHOT FORMATION
 - CLAYGATE MEMBER
 - LAMBETH GROUP
 - LONDON CLAY FORMATION

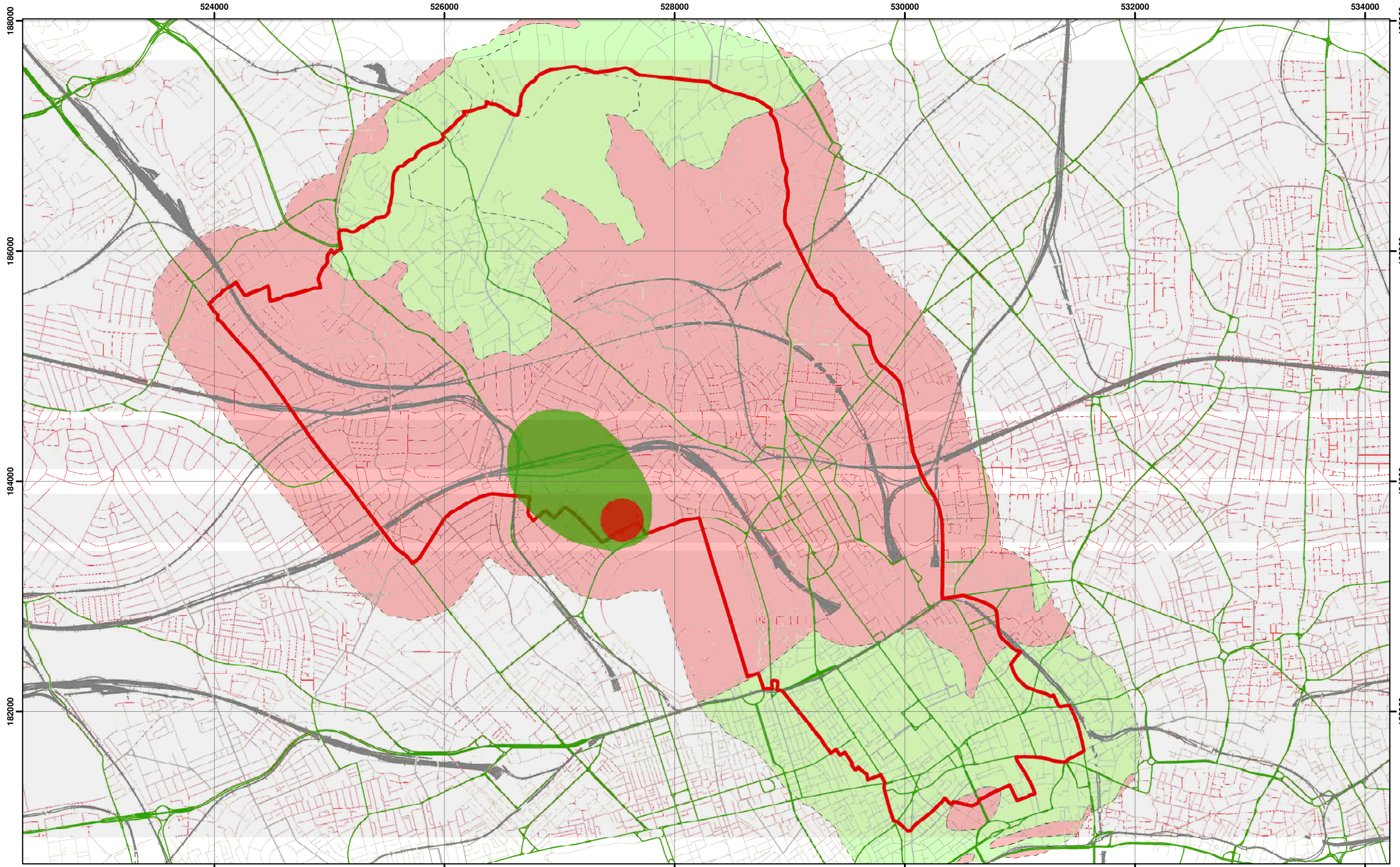


NB: Geological boundaries are largely indicative based on available geological mapping data

**Camden Geological, Hydrogeological
and Hydrological Study**
Camden Geological Map

213923

FIGURE **3**



Environment Agency Aquifer Designation based on BGS Mapping



Scale at A3: 1:30,000

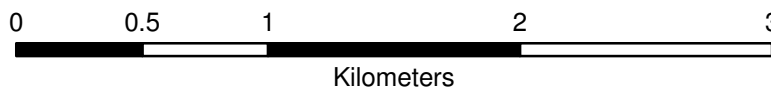
Coordinate System:
British National Grid
GCS_OSGB_1936

Legend

- | | | |
|-------------------|----------------------------|-------------------------------|
| Borough of Camden | Aquifer Designation | Source Protection Zone |
| Railway Lines | Secondary A Aquifer | Outer Source Protection Zone |
| A Roads | Unproductive Strata | Inner Source Protection Zone |

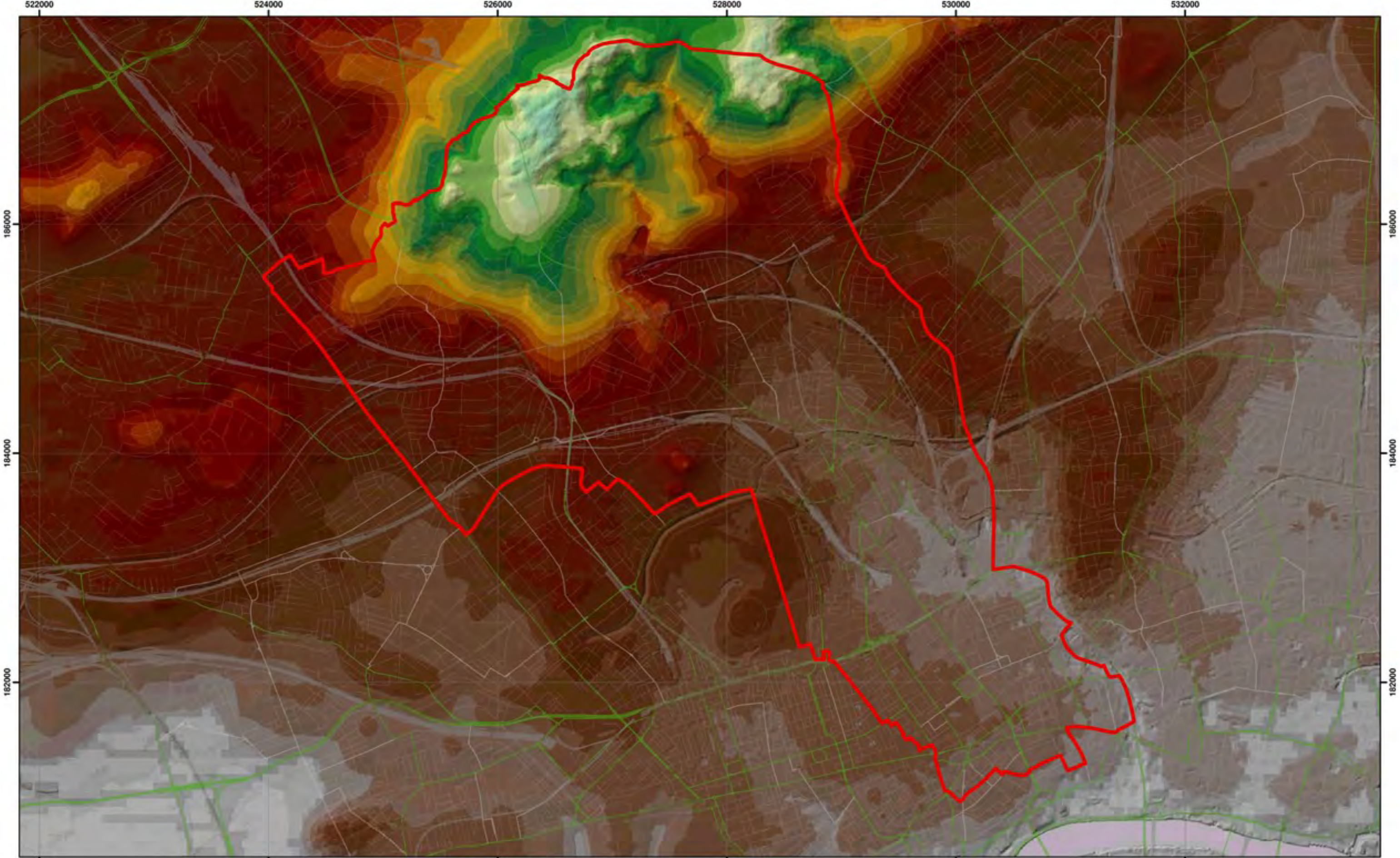
NB. Aquifer boundaries are indicative based on available geological mapping data

**Camden Geological, Hydrogeological
and Hydrological Study**
Camden Aquifer Designation Map



213923

FIGURE **8**



Topographic map based on digital terrain model provided by Camden Borough Council

N
 Scale at A3: 1:30,000
 Coordinate System:
 British National Grid
 GCS_OSGB_1936
 0 0.375 0.75 1.5 2.25 3 3.75
 Kilometers

Legend

- London Borough of Camden
- Railway Lines
- A Roads

DTM Terrain	125 - 130	90 - 95	55 - 60	20 - 25
	120 - 125	85 - 90	50 - 55	15 - 20
	115 - 120	80 - 85	45 - 50	10 - 15
	110 - 115	75 - 80	40 - 45	5 - 10
	105 - 110	70 - 75	35 - 40	0 - 5
	100 - 105	65 - 70	30 - 35	-5 - 0
	95 - 100	60 - 65	25 - 30	-7.4 - -5

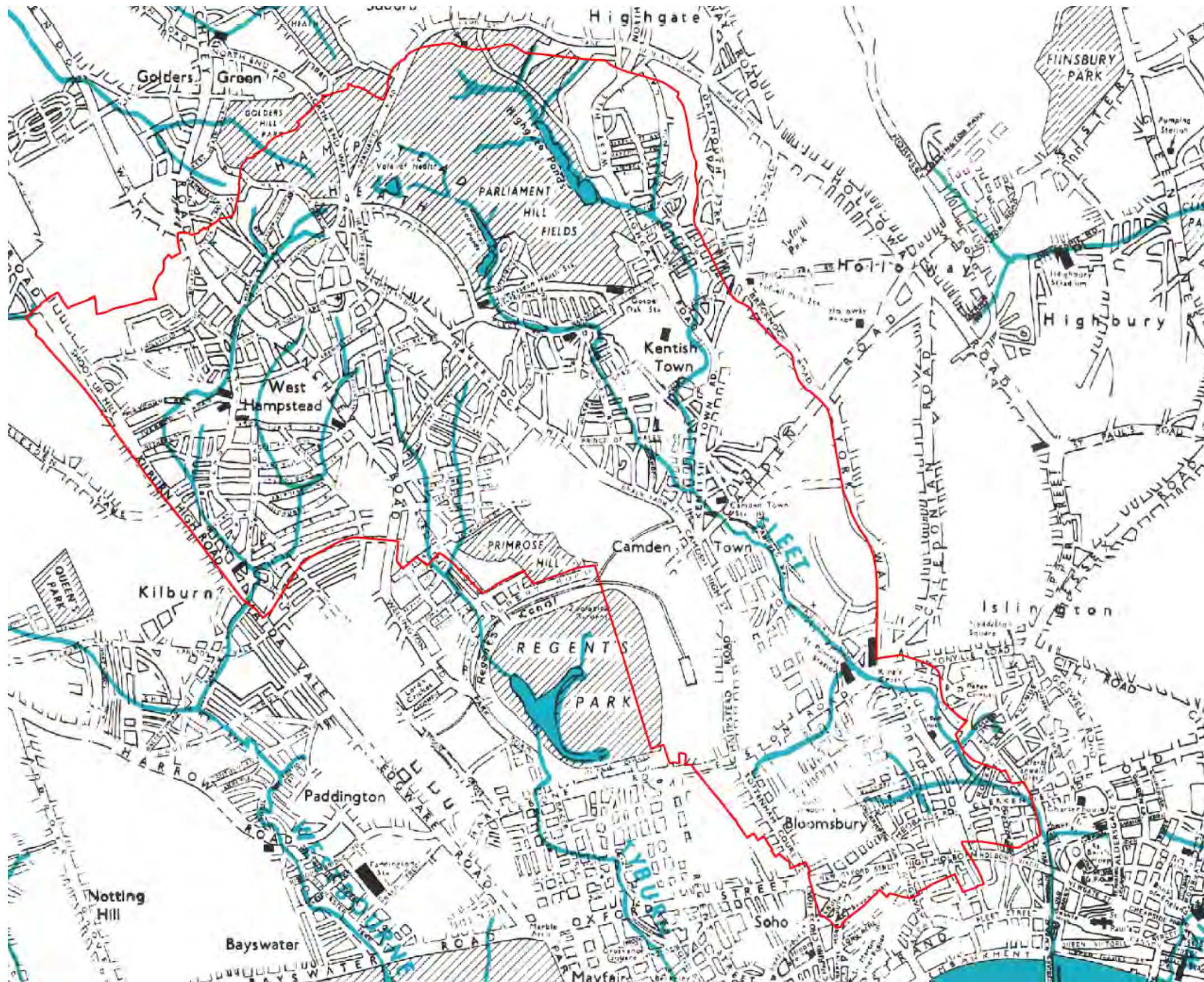
Elevation

- 145 - 150
- 140 - 145
- 135 - 140
- 130 - 135

* Window Size: 20,000

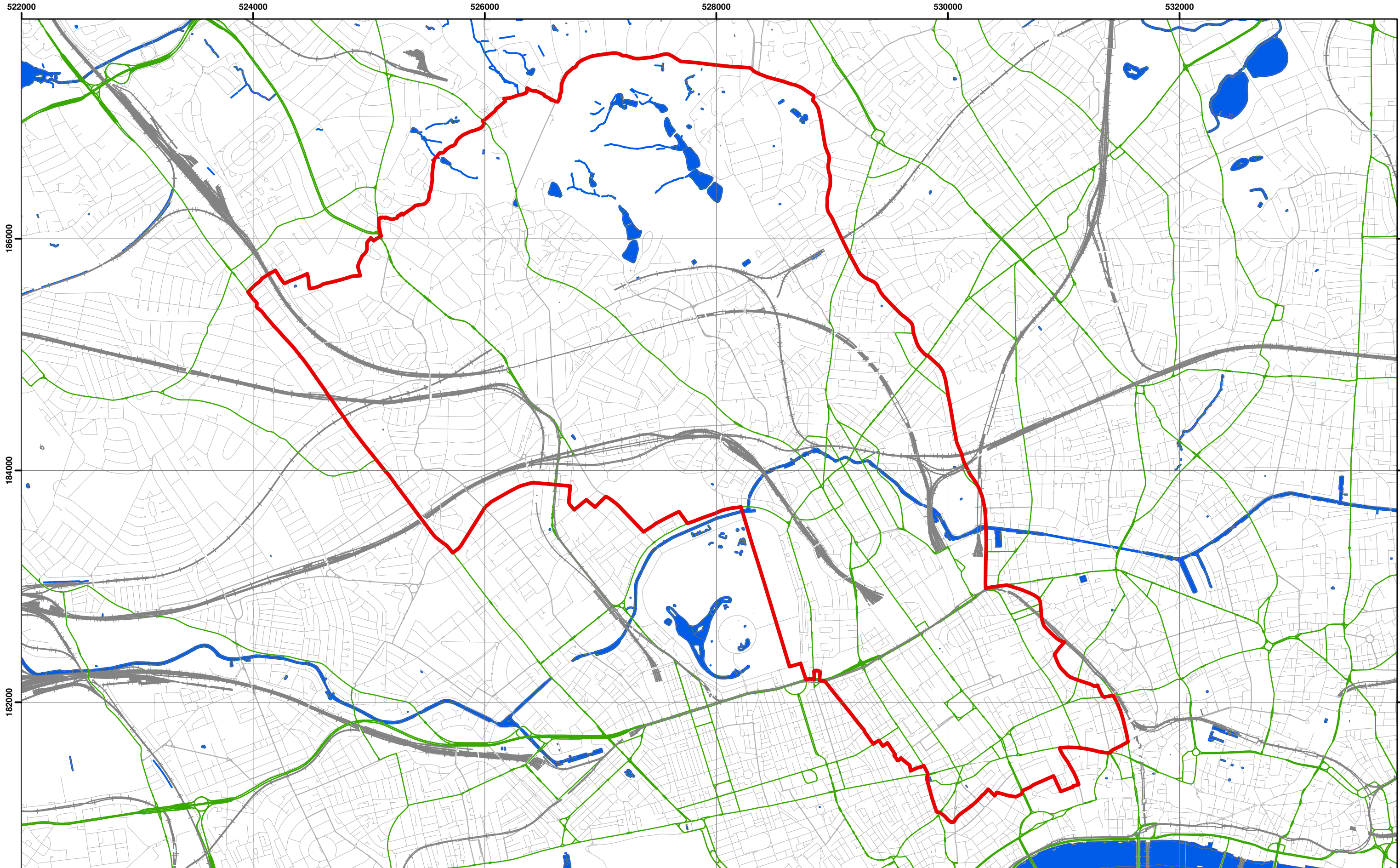
Camden Geological, Hydrogeological and Hydrological Study
 Camden Topographic Map

213923



Camden Geological, Hydrogeological and Hydrological Study
Watercourses

Source – Barton, Lost Rivers of London



Data Source: London Borough of Camden, 2010



Scale at A3: 1:30,000

Coordinate System:
British National Grid
GCS_OSGB_1936

Legend

- London Borough of Camden
- Surface water
- Railway Lines
- A Roads

**Camden Geological, Hydrogeological
and Hydrological Study**

Camden Surface Water Features



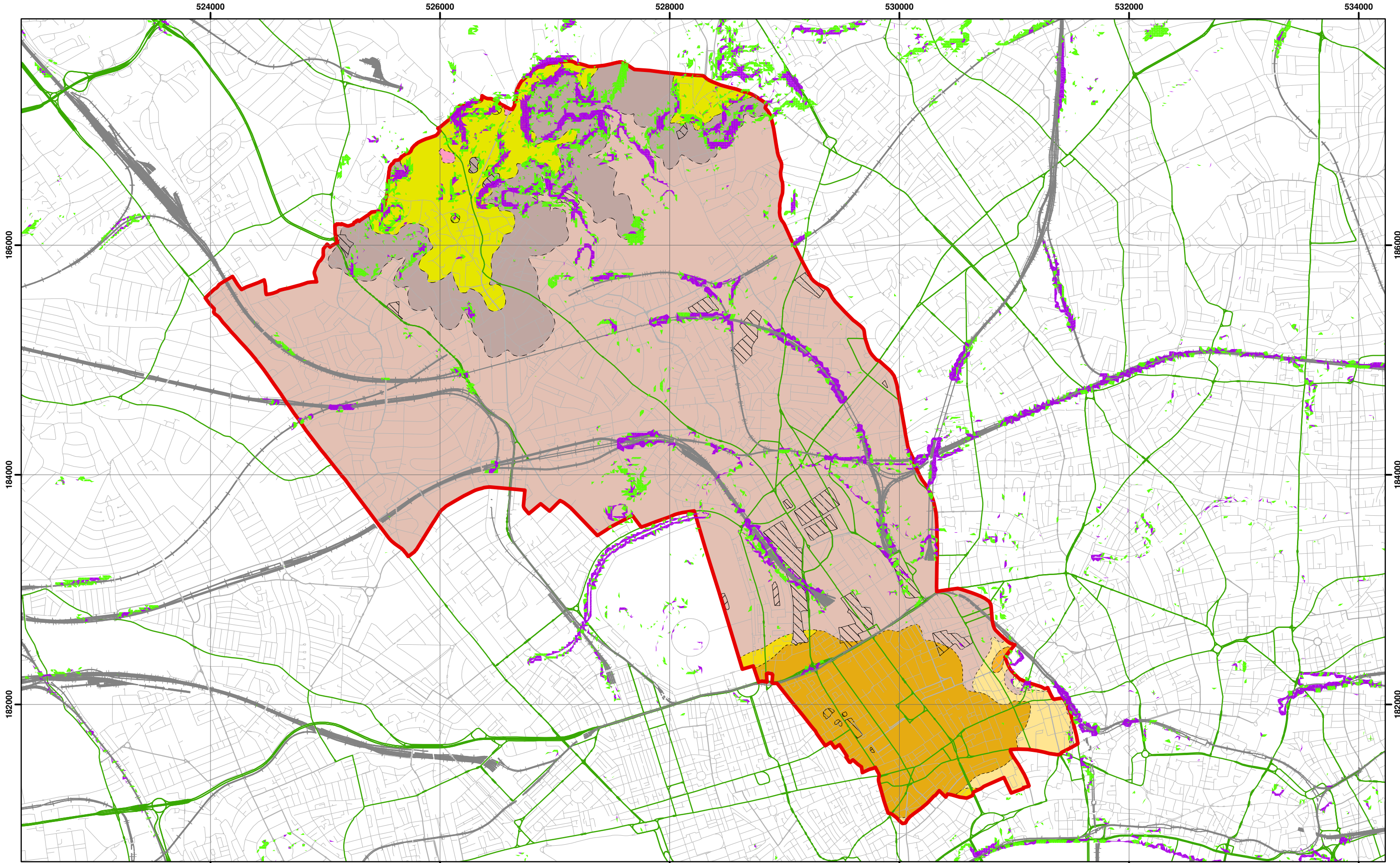
213923

FIGURE **12**



Figure 5 from Core Strategy, London Borough of Camden

**Camden Geological, Hydrogeological
 and Hydrological Study
 Flood Map**



Slope Angles calculated from Digital Terrain Model Provided By Camden Borough Council



Scale at A3: 1:30,000

1:10,000 BGS Mapping
Coordinate System:
British National Grid
GCS_OSGB_1936



Legend

- | | | | | |
|--------------|--------------------------|-----------------------------|-----------------------------|-------------------------|
| Slope | London Borough of Camden | BGS 1:10K Artificial Ground | BGS 1:10K Drift Geology | BGS 1:10K Solid Geology |
| 0° - 7° | Railway Lines | MADE GROUND | ALLUVIUM | BAGSHOT FORMATION |
| 7° - 10° | A Roads | WORKED GROUND | HACKNEY GRAVEL FORMATION | CLAYGATE MEMBER |
| > 10° | | | LANGLEY SILT FORMATION | LAMBETH GROUP |
| | | | LYNCH HILL GRAVEL FORMATION | LONDON CLAY FORMATION |
| | | | STANMORE GRAVEL FORMATION | |

NB. Geological boundaries are largely indicative based on available geological mapping data

**Camden Geological, Hydrogeological
and Hydrological Study**

Slope Angle Map

213923

FIGURE

16



Source - London Borough of Camden, January 2010. *Camden Core Strategy Proposed Submission*.

Camden Geological, Hydrogeological and Hydrological Study Transport Infrastructure