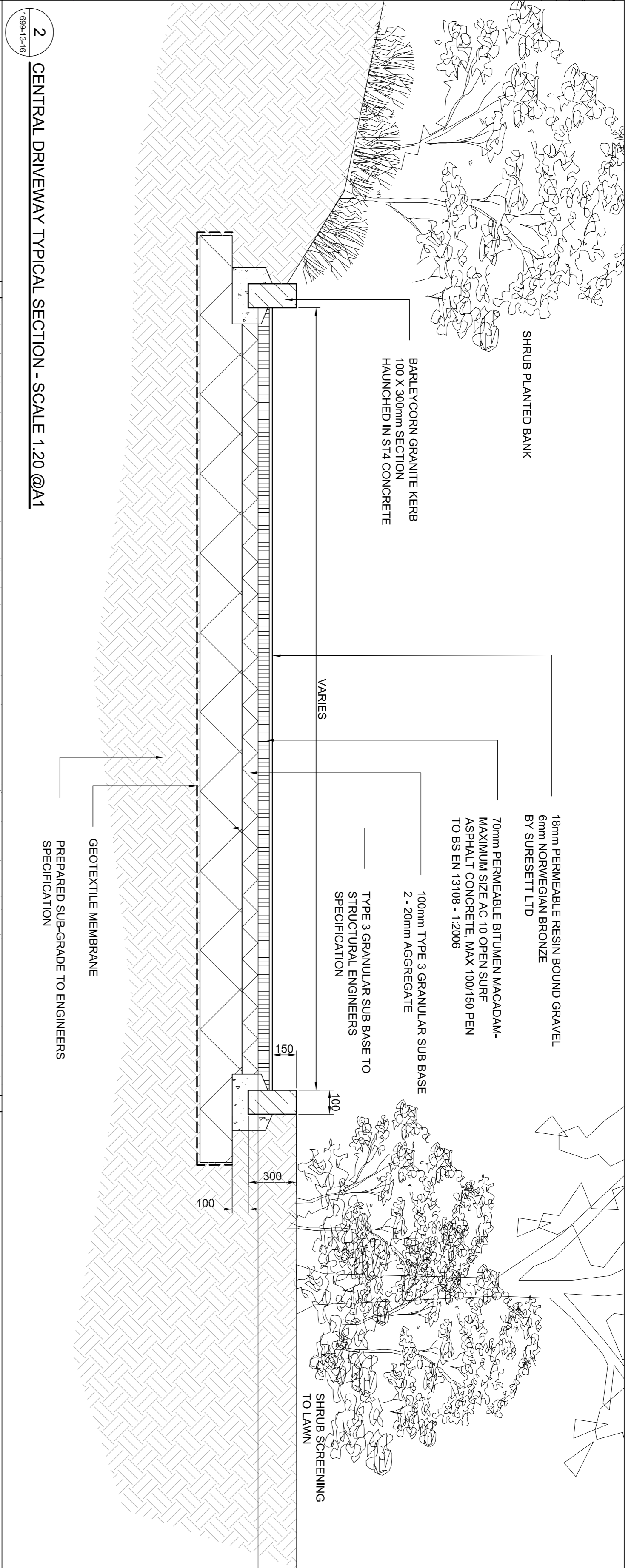
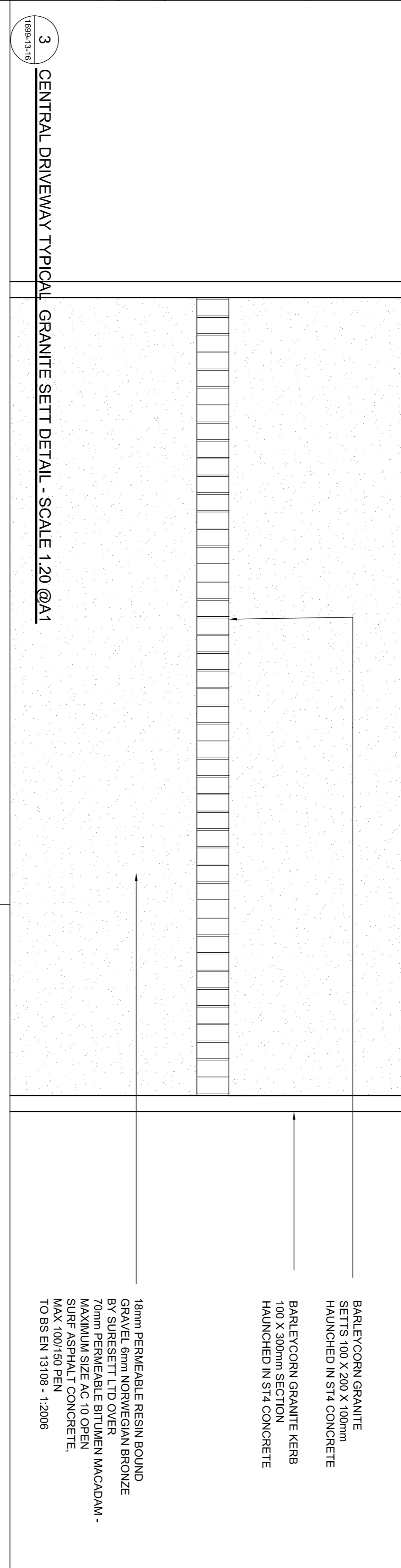


NOTE:

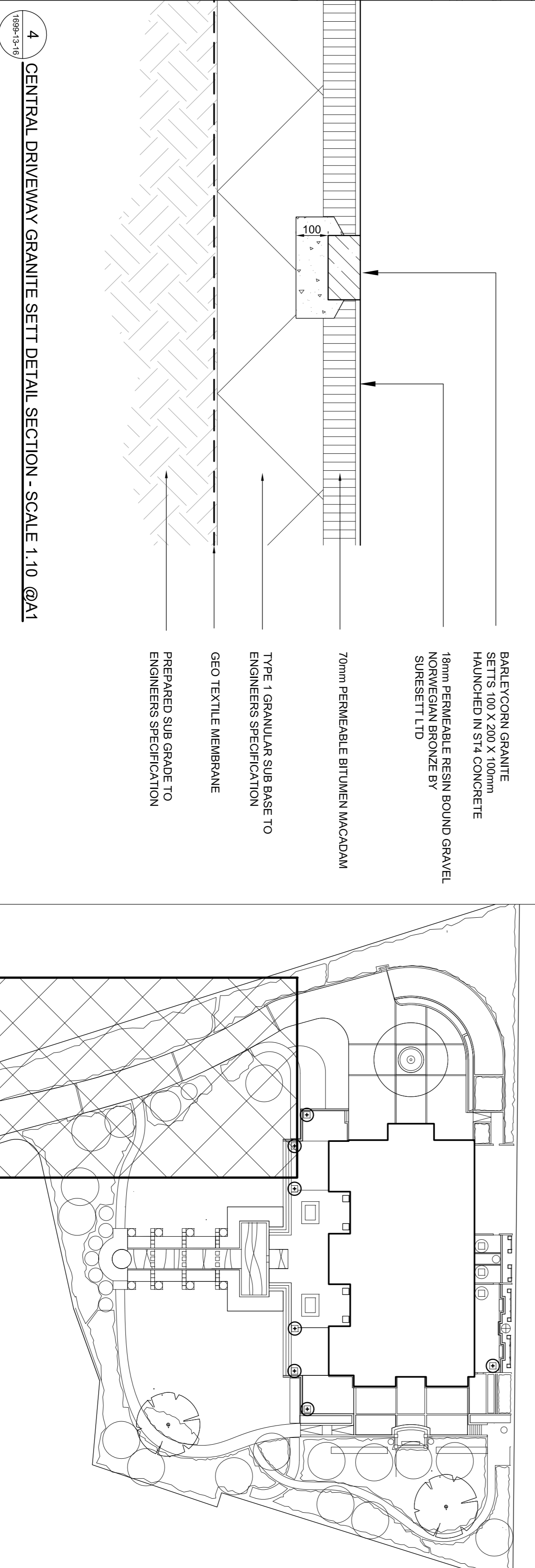
- This drawing to be read in conjunction with all relevant architects and engineers drawings and the specification.
- Any discrepancies or details on or between these drawings must be drawn to the attention of the landscape architect (and to the architect or engineer as appropriate) in writing for clarification.
- All dimensions are in millimetres unless otherwise noted.
- This drawing is the copyright of Bowles & Wyer (and other consultants where parts of their drawings have been incorporated) and cannot be reproduced or used without their written permission.



2 CENTRAL DRIVEWAY TYPICAL SECTION - SCALE 1:20 @A1

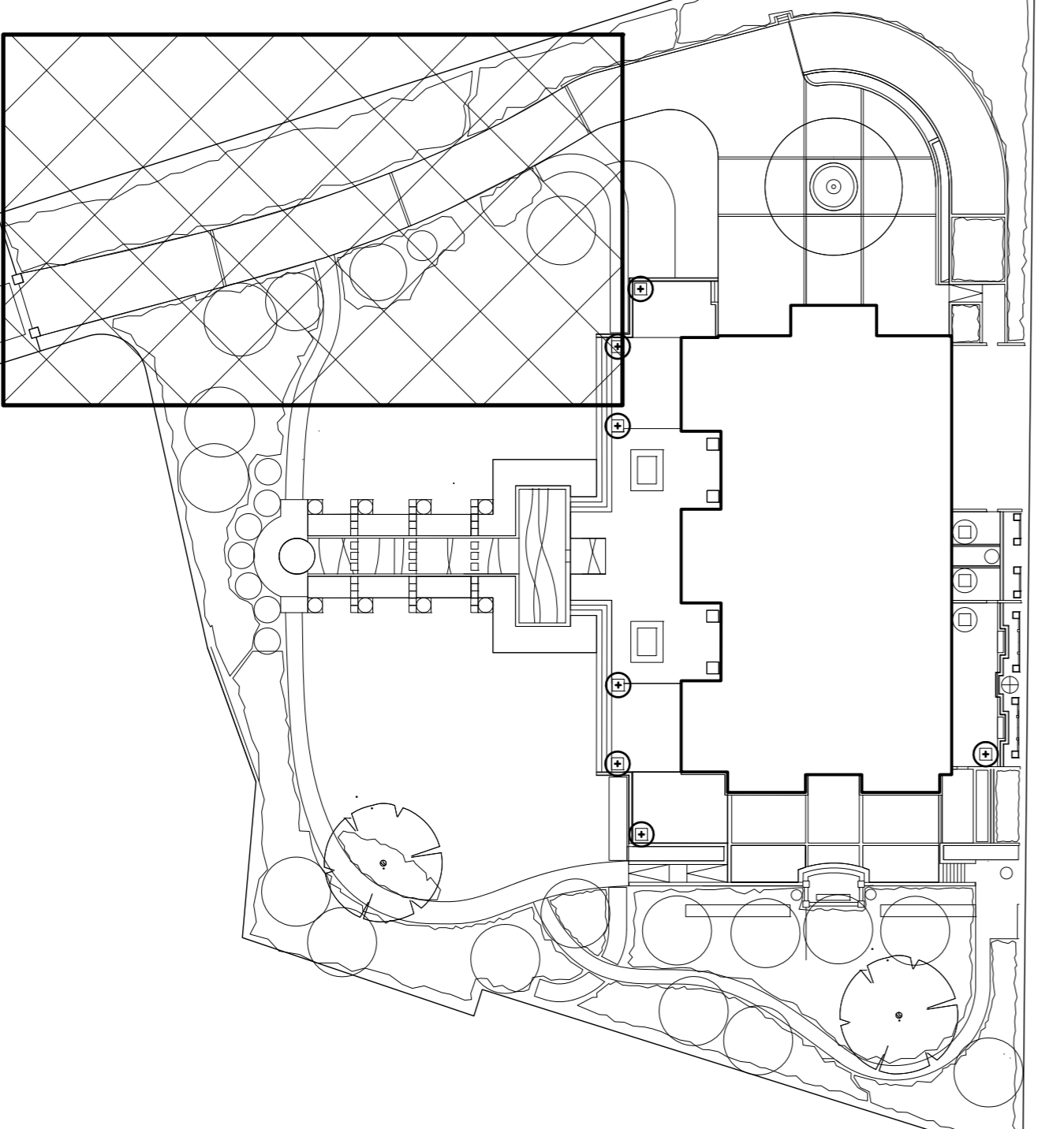


3 CENTRAL DRIVEWAY TYPICAL GRANITE SETT DETAIL - SCALE 1:20 @A1



4 CENTRAL DRIVEWAY GRANITE SETT DETAIL SECTION - SCALE 1:10 @A1

REV. C Materials revision 14.7.2015
 REV. B Amendment revision 24.6.2015
 REV. A Change of status 26.6.2015



KEY DIAGRAM - SCALE 1:500

STATUS:

Approval of details

BOWLES & WYER

5 Williams Court, Tunnel Way, Pristone, Nr. Leighton Buzzard, LU7 9GJ
 Tel: 01296 662439 Fax: 01296 663959 Email: admin@bowleswyer.co.uk

Description	Drawn	PS	Checked	Drawing Name	Health	Date	Rev
Central Drive plan, section and details				Health Park Central Drive		1699-13-16	C
				Scale As Shown		14.4.15	