

EXISTING SITE PLAN
(1:100)

The drawings comply with TEF & Vodafone Non-Standard ICNIRP guidelines.
Designed in accordance with Cornerstone document: CORN/09/006

Notes:
1 ALL DIMENSIONS ARE IN MM UNLESS NOTED OTHERWISE

N.G.R. E: 526865 N: 187568

REV	MODIFICATION	BY	CH	DATE
B	Notes revised		CM	PTC 18.10.13
A	Issued for Construction		PCH	SRR 18.07.13

mono #
 MONO CONSULTANTS LIMITED
 No. 58 Cynet Court
 Timothy's Bridge Road
 Stratford-upon-Avon
 Warwickshire
 CV37 9NW
 t. 44 (0)1789 206500
 f. 44 (0)1789 206529
 www.monoconsultants.com



Cell Name	Opt
BELSIZE PARK	A

Cell ID No		
CTIL	Host	Sharer
136517	(TEF) 036951	(VF) N/A

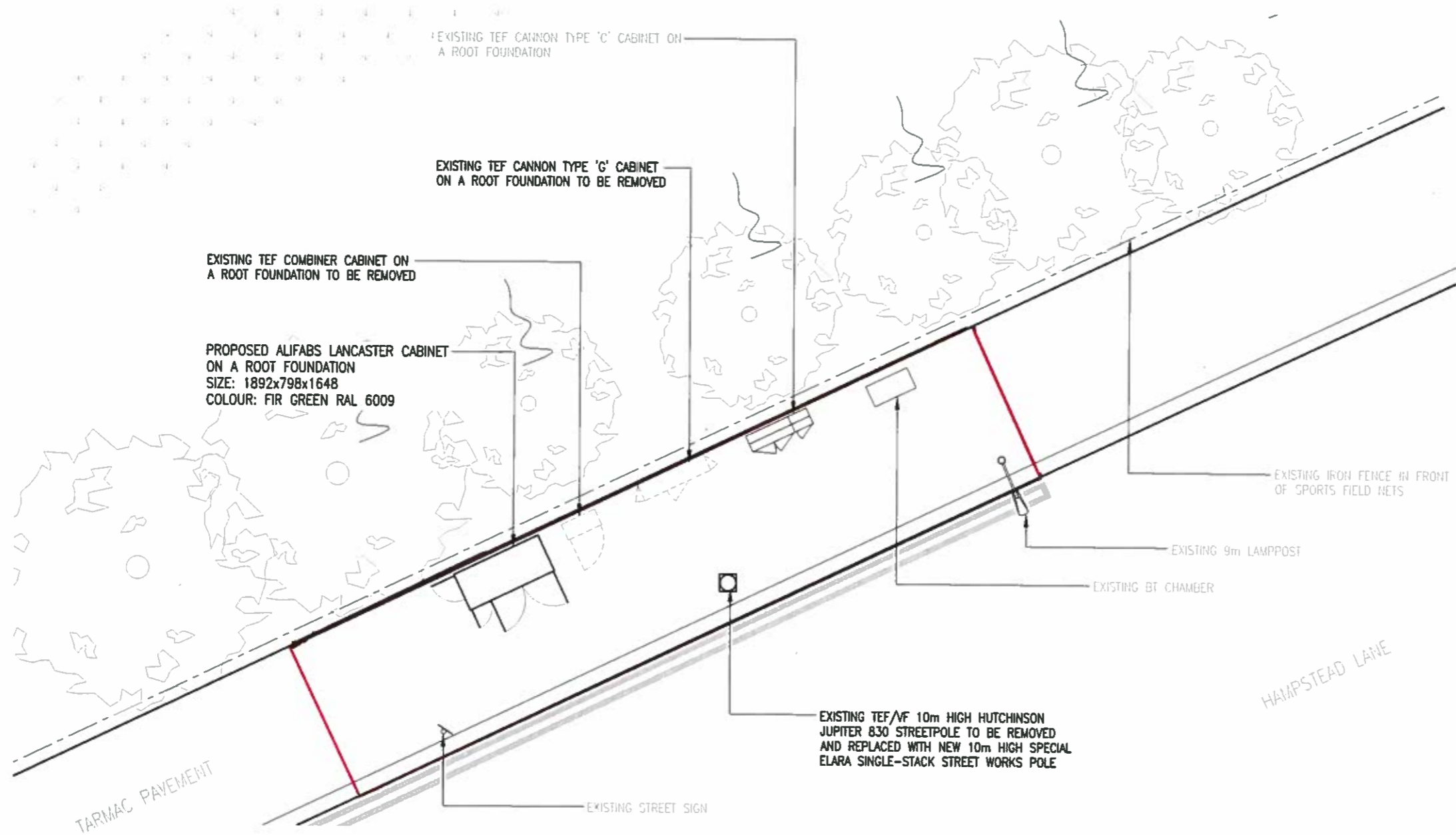
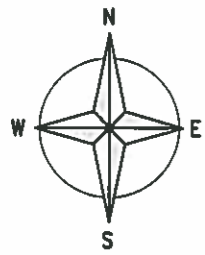
Site Address / Contact Details
 LAND SOUTH OF SPORTS GROUND
 HAMPSTEAD LANE
 LONDON
 NW3 7JP

Drawing Title: EXISTING SITE PLAN

Purpose of Issue: CONSTRUCTION

Drawing Number: 201

Scale:	As Shown	Drawn:	MW	Date:	18.07.13	Issue:	B
Checked:	PCH	Date:	18.07.13	Approved:	SRR	Date:	18.07.13



PROPOSED SITE PLAN
(1:100)

The drawings comply with TEF & Vodafone Non-Standard ICNIRP guidelines.
Designed in accordance with Cornerstone document: CORN/09/006

Notes:
1 ALL DIMENSIONS ARE IN MM UNLESS NOTED OTHERWISE

N.G.R. E: 526865 N: 187568

NOTES:
THIS DRAWING DEPICTS BOTH THE PROPOSED EQUIPMENT AND THE EQUIPMENT TO BE REMOVED. ALL EQUIPMENT ANNOTATED 'TO BE REMOVED' WILL NOT BE ON SITE FOLLOWING THE PROPOSED UPGRADE WORKS

G	Cabinets Revised, Pole Swapped	SAH	PTC	08.06.15
F	Meter Cab. Removed, Pole Shroud Revised	SAH	PTC	08.05.15
E	Retain Type C cabinet	CM	PTC	11.11.14
D	3No. cabinets removed, 2No. added	HER	PTC	03.06.14
C	Existing removed equipment note added	GMB	SRR	15.11.13
B	New proposed Cabinets	CM	PTC	18.10.13
A	Issued for Construction	PCH	SRR	18.07.13
REV	MODIFICATION	BY	CH	DATE

mono #
 MONO CONSULTANTS LIMITED
 No. 58 Cynet Court
 Timothy's Bridge Road
 Stratford-upon-Avon
 Warwickshire
 CV37 9NW
 t. 44 (0)1789 206500
 f. 44 (0)1789 206529
 www.monoconsultants.com

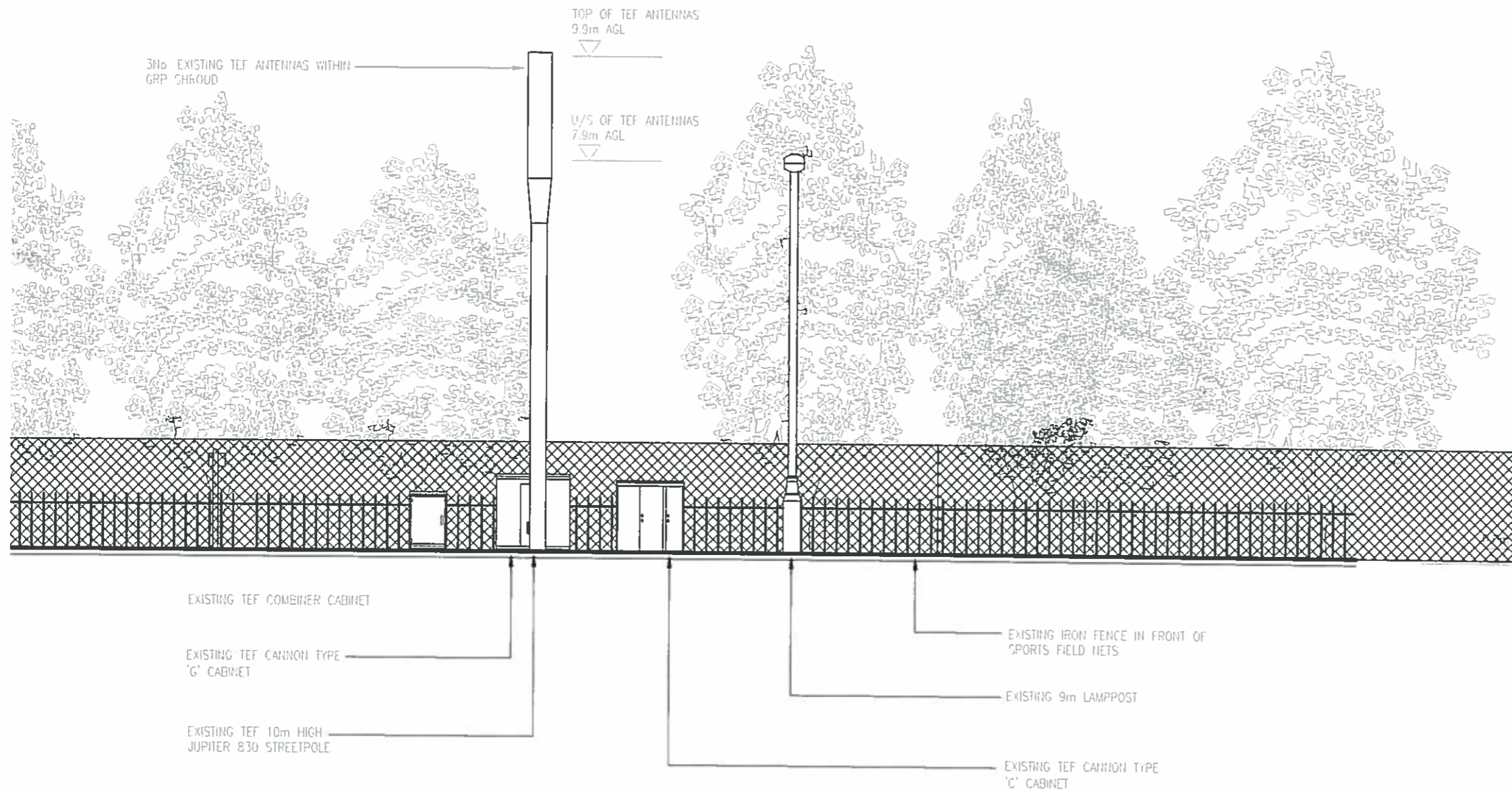
O₂
 CTIL

Cell Name		Opt
BELSIZE PARK		A
Cell ID No		
CTIL	Host	Sharer
136517	(TEF) 036951	(VF) N/A
Site Address / Contact Details		
LAND SOUTH OF SPORTS GROUND HAMPSTEAD LANE LONDON NW3 7JP		

Drawing Title: PROPOSED SITE PLAN			
Purpose of issue: CONSTRUCTION			
Drawing Number: 202			
Scale: As Shown	Drawn: MW	Date: 18.07.13	Issue
Checked: PCH	Date: 18.07.13	Approved: SRR	Date: 18.07.13
			G

Notes:
1 ALL DIMENSIONS ARE IN MM UNLESS NOTED OTHERWISE

N.G.R. E: 526865 N: 187568



EXISTING SOUTH ELEVATION
(1:100)

The drawings comply with TEF & Vodafone Non-Standard ICNIRP guidelines.
Designed in accordance with Cornerstone document: CORN/09/006

REV	MODIFICATION	BY	CH	DATE
C	Annotation amended	HER	PTC	03.06.14
B	Notes revised	CM	PTC	18.10.13
A	Issued for Construction	PCH	SRR	18.07.13

mono #

MONO CONSULTANTS LIMITED
No. 58 Cynet Court
Timothy's Bridge Road
Stratford-upon-Avon
Warwickshire
CV37 9NW
t. 44 (0)1789 206500
f. 44 (0)1789 206529
www.monoconsultants.com

O₂
CTIL

Cell Name	Opt
BELSIZE PARK	A

Cell ID No		
CTIL	Host	Sharer
136517	(TEF) 036951	(VF) N/A

Site Address / Contact Details

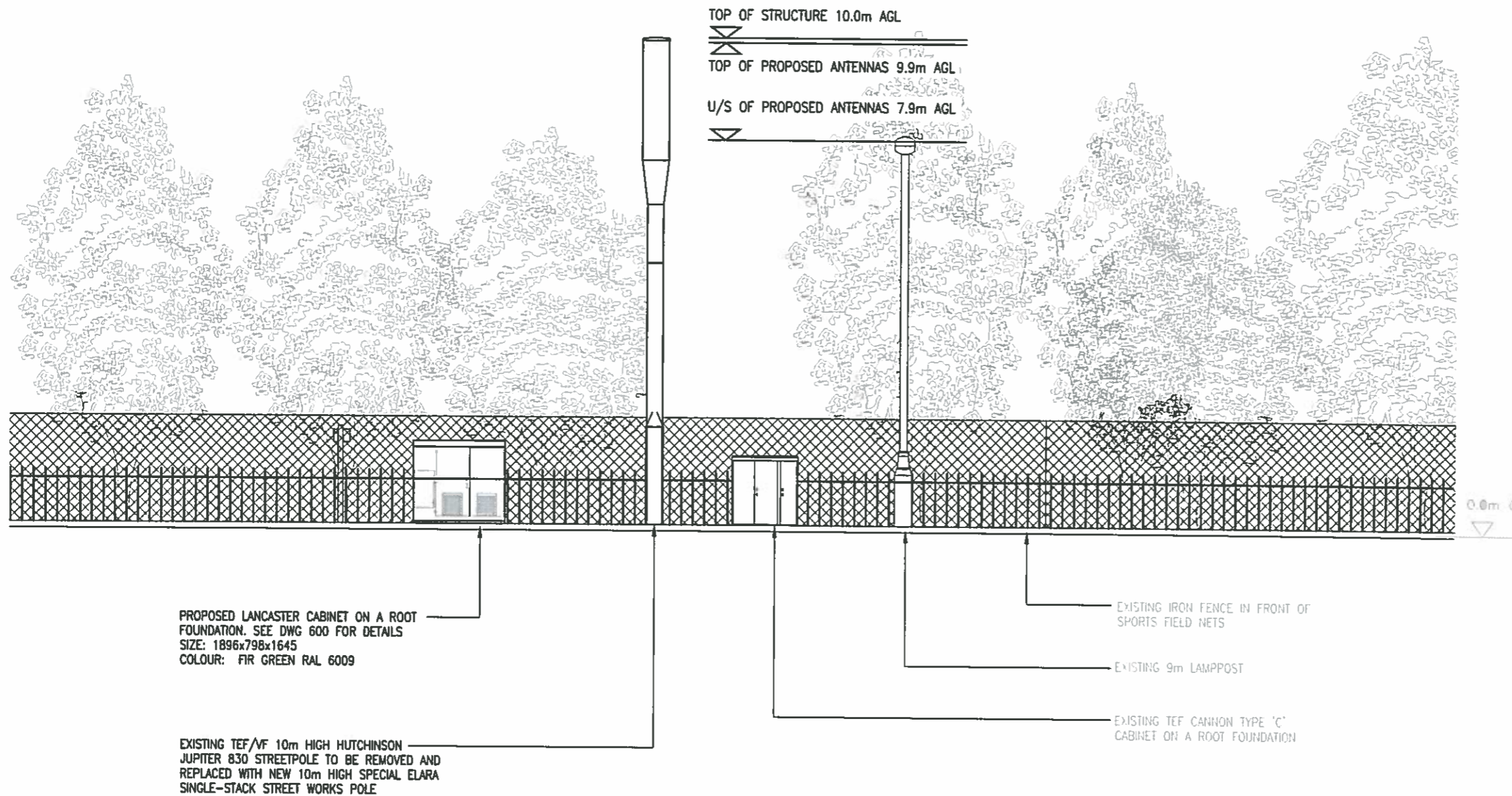
LAND SOUTH OF SPORTS GROUND
HAMPSTEAD LANE
LONDON
NW3 7JP

Drawing Title: EXISTING SITE ELEVATION

Purpose of issue: CONSTRUCTION

Drawing Number: 301

Scale:	As Shown	Drawn:	MW	Date:	18.07.13	Issue:	
Checked:	PCH	Date:	18.07.13	Approved:	SRR	Date:	18.07.13
							C



PROPOSED SOUTH ELEVATION
(1:100)

The drawings comply with TEF & Vodafone Non-Standard ICNIRP guidelines.
Designed in accordance with Cornerstone document: CORN/09/006

Notes:
1 ALL DIMENSIONS ARE IN MM UNLESS NOTED OTHERWISE

N.G.R. E: 526865 N: 187568

NOTES
EXISTING CANNON TYPE 'C' AND ALIFABS COMBINER CABINET ARE NOT SHOWN ON THIS DRAWING AS THEY ARE TO BE REMOVED. THIS DRAWING DEPICTS THE SITE FOLLOWING THE PROPOSED WORKS ONLY

G	Cabinets Revised, Pole Segged	SAH	PTC	08.06.15
F	Meter Cab. Removed, Pole Shroud Revised	SAH	PTC	08.05.15
E	Retain Type G cabinet	CM	PTC	11.11.14
D	3No. cabinets removed, 2No. added	HER	PTC	03.06.14
C	Existing removed equipment note amended	GMB	SRR	15.11.13
B	Number of cabinets in proposal reduced	CM	PTC	18.10.13
A	Issued for Construction	PCH	SRR	18.07.13

REV	MODIFICATION	BY	CH	DATE
-----	--------------	----	----	------

mono #
 MONO CONSULTANTS LIMITED
 No. 58 Cygnet Court
 Timothy's Bridge Road
 Stratford-upon-Avon
 Warwickshire
 CV37 9NW
 t. 44 (0)1789 206500
 f. 44 (0)1789 206529
 www.monoconsultants.com



Cell Name		Opt
BELSIZE PARK		A

Cell ID No		
CTIL	Host	Sharer
136517	(TEF) 036951	(VF) N/A

Site Address / Contact Details
 LAND SOUTH OF SPORTS GROUND
 HAMPSTEAD LANE
 LONDON
 NW3 7JP

Drawing Title: PROPOSED SITE ELEVATION

Purpose of issue: CONSTRUCTION

Drawing Number: 302

Scale:	As Shown	Drawn:	MW	Date:	18.07.13	Issue:	G
Checked:	PCH	Date:	18.07.13	Approved:	SRR	Date:	18.07.13