

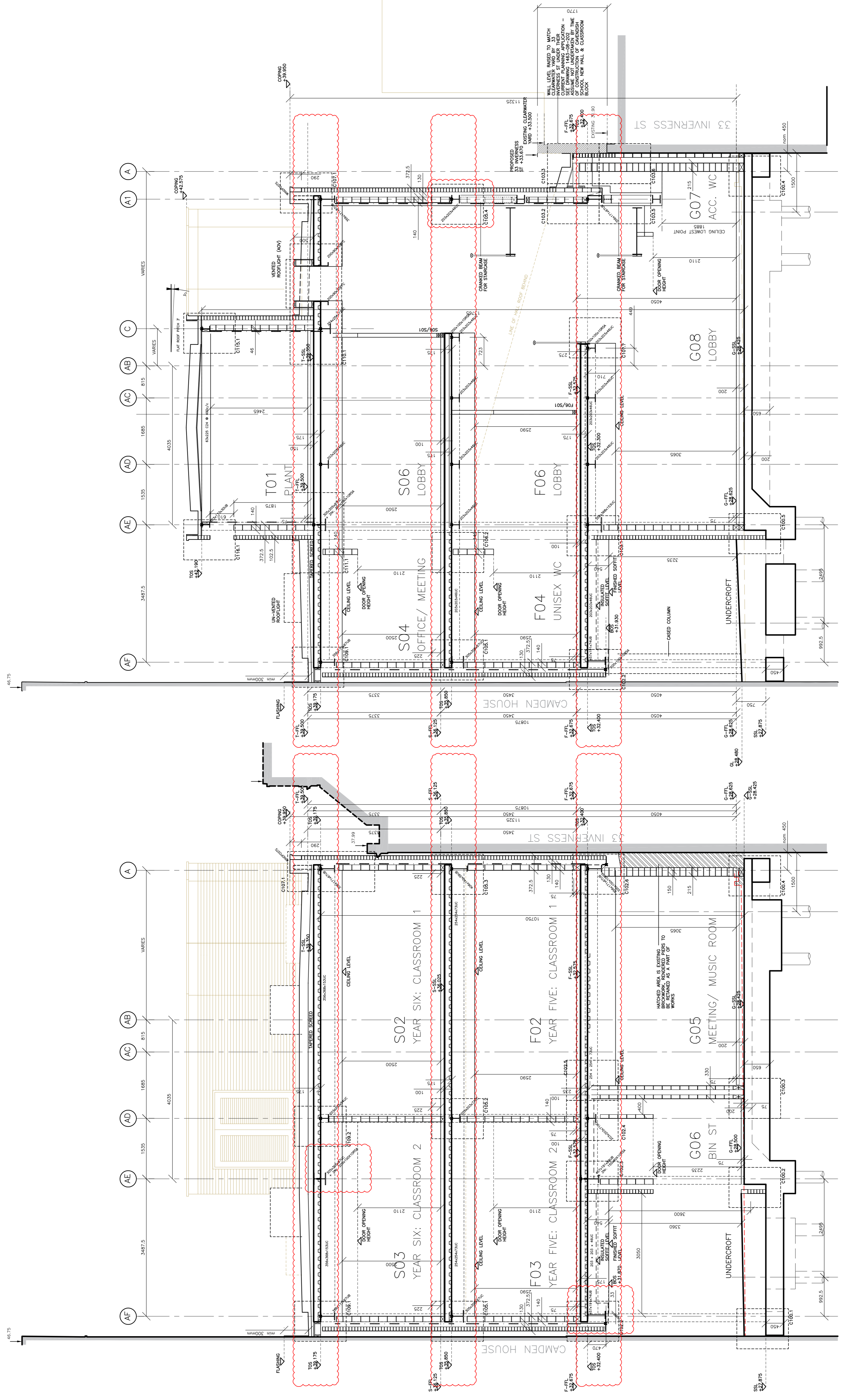
Revisions	
ISSUED FOR BILLING	A
ISSUED FOR BILLING (NO CHANGES)	B
ISSUED FOR TENDER	C
CONSTRUCTION AGAINST JUNCTION WITH 33 INVERNESS ST. AMENDED	D
NOTED ADDED TO SECTION AA TO HIGH-LIGHTS REMOVAL OF BUTRESSES	E
ISSUED FOR CONSTRUCTION	F
ISSUED FOR CONSTRUCTION	G

ISSUED FOR BILLING	NJB	02.10.14
ISSUED FOR BILLING (NO CHANGES)	NJB	13.10.14
ISSUED FOR TENDER	Checked	CD
Date	08.12.14	Checked
CONSTRUCTION AGAINST JUNCTION WITH 33 INVERNESS ST. AMENDED	NJB	18.03.15
NOTED ADDED TO SECTION AA TO HIGH-LIGHTS REMOVAL OF BUTRESSES	CD	14.04.15
ISSUED FOR CONSTRUCTION	YK	28.04.15
ISSUED FOR CONSTRUCTION	Checked	CD
Date	28.04.15	Checked
SECTION AA GROUND FLOOR EXTERNAL WALL SETTING OUT AMENDED ON CL. A	YK	06.05.15
ROOF LC ADDED TO G/L AE, SECTION AA; FF G/L AF & AI STEELS AMENDED; SLABS AMENDED TO 175MM	CD	12.06.15

2684 B270 G	
THE CAVENDISH SCHOOL NEW HALL AND CLASSROOM BLOCK	
SECTIONS AA + BB (CLASSROOM BLOCK)	
Scale 1:50 @ A1	Checked
Date SEP 14	Drawn
NJB	

BH & M
BARNESLEY HEWETT
& MALLINSON
CHARTERED ARCHITECTS
1 White Hart Lane, London SW13 0BA
Telephone: 0181 878 4667 Fax: 0181 878 8907
e-mail: mail@bhnm.co.uk http://www.bhnm.co.uk

Note
Do not scale from this drawing.
All dimensions to be checked on site.
Report any discrepancies to the Architect.

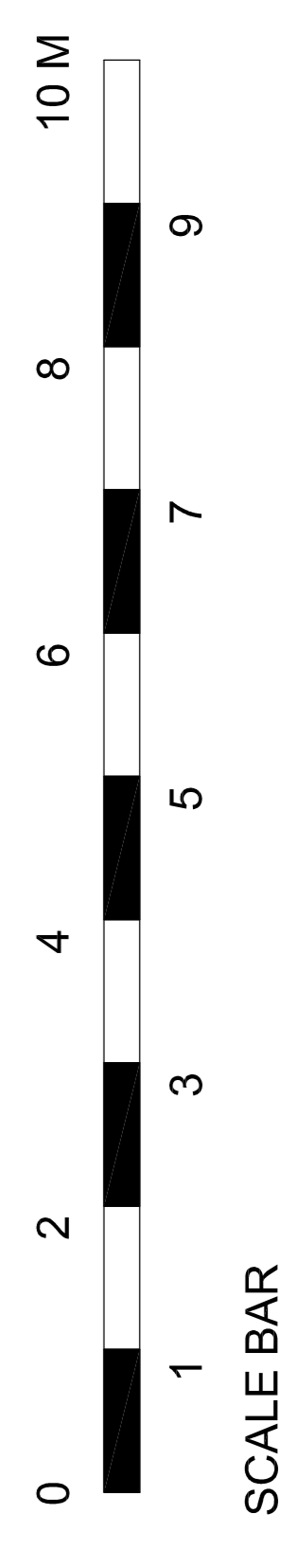


FOR FOUNDATIONS DETAILS
SEE STR. ENG. DWGS

FOR FOUNDATIONS DETAILS
SEE STR. ENG. DWGS

SECTION BB

SECTION AA



SCALE BAR