



TRIAL PIT LOGS AND PHOTOGRAPHS

RESIDENTIAL DEVELOPMENT 3 ALDRED ROAD, LONDON, NW6 1AN

ON BEHALF OF
PRIVATE CLIENT OF PAWLIK + WIEDMER
REPORT 15-190.03
JULY 2015

1.0 Fieldwork

Five hand excavated trial pits were completed to expose foundations of the existing building in accordance with instructions from Pawlik + Wiedmer and in accordance with Aviron's fee proposal of 12 May 2015.

Trial pits were completed by breaking out overlying concrete using an electric beaker and excavated by hand using hand tools.

In accordance with our instructing trial pits were completed to a point where the base of foundations were encountered, at which point sketches, logs and photographs were taken by a Site Engineer.

Shallow brick corbel foundations were encountered at each location and at locations TP1 (section B), TP3 and TP4 the bottom corbel was shown to rest upon lean mix.

Groundwater was not encountered within the trial pits. This further suggests the groundwater encountered within the monitoring well installation of BH1 (Ground Investigation Report, reference 15-109.02, July 2015) is most likely perched within the overlying Mad Ground unit (3m thick) and possibly also associated with locally breached/cracked clay pipe drainage along the frontages of the terraces/within the adjacent pavement.

All trial pits were inspected by the appointed structural engineer and upon approval were backfilled and covered with a concrete capping.

Appended to the cover page are;

1. Figure 1 : Trial Pit Location Plan
2. Trial Pit Logs
3. Trial Pit Photographs

This report should be passed to the appointed structural engineer to complete their foundation design.

Prepared by **James Burkitt** BEng (Hons) CEnv MRICS
Managing Director

Date 1 July 2015

Aviron Associates Limited - Head Office

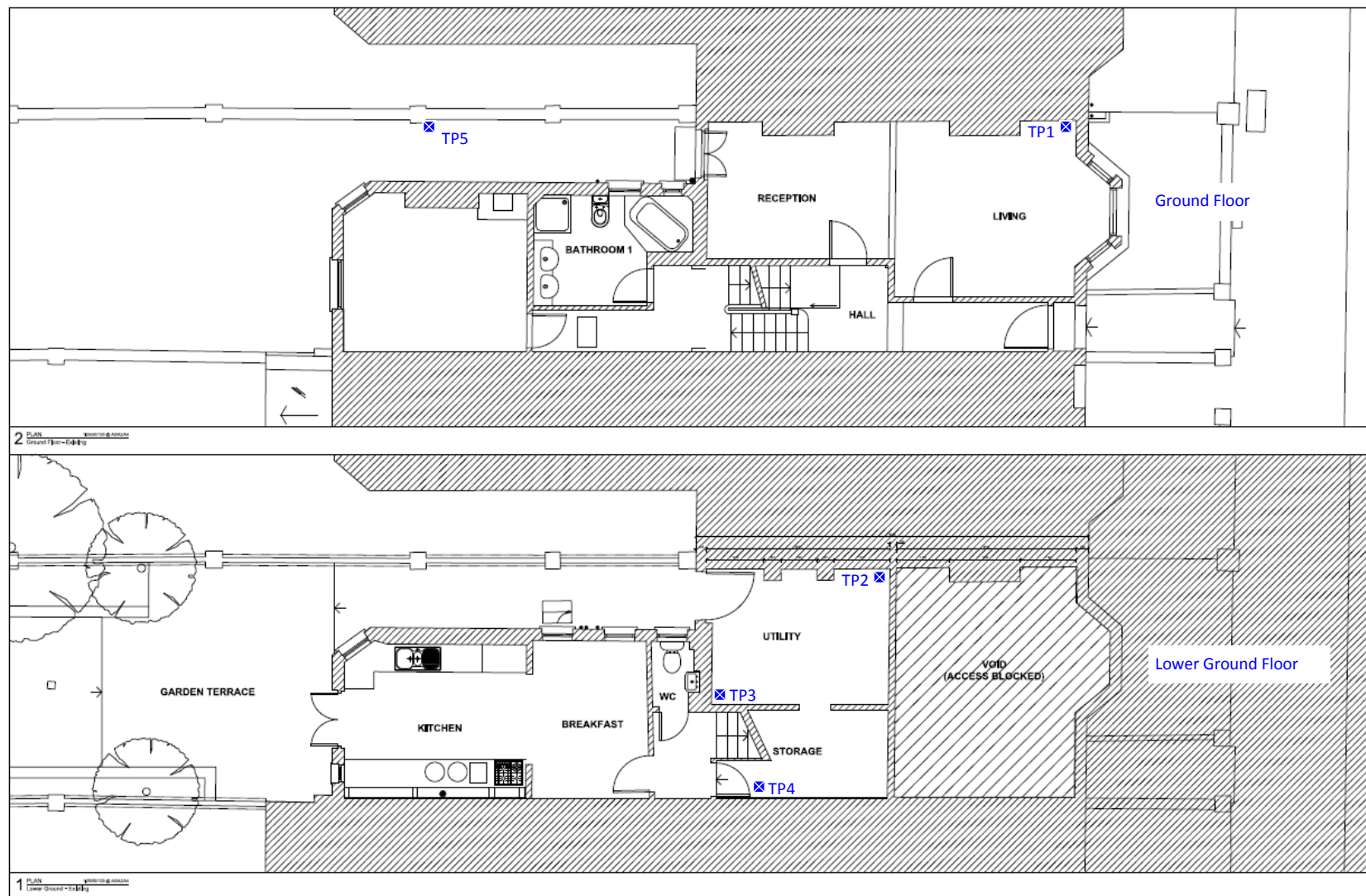
Badgemore House - Badgemore Park - Gravel Hill - Henley on Thames - RG9 4NR

Contacts

T; 01491 413 722 - M: 07787 771 686 - F: 01491 413 722 - E: james@aviron.co.uk - W: www.aviron.co.uk

Registered Office

Herschel House, 58 Herschel Street, Slough, Berkshire, SL1 1PG
Company no. 06471259 - VAT no. 929 5083 96



Legend

✕ Trial Pit Location

Notes

Figure 1

Drawing Title

Trial Pit Location Plan

Project Number 15-190.03

Project Title
3 Aldred Road, London, NW6 1AN

Drawn by JB

Checked by OB

Scale NTS

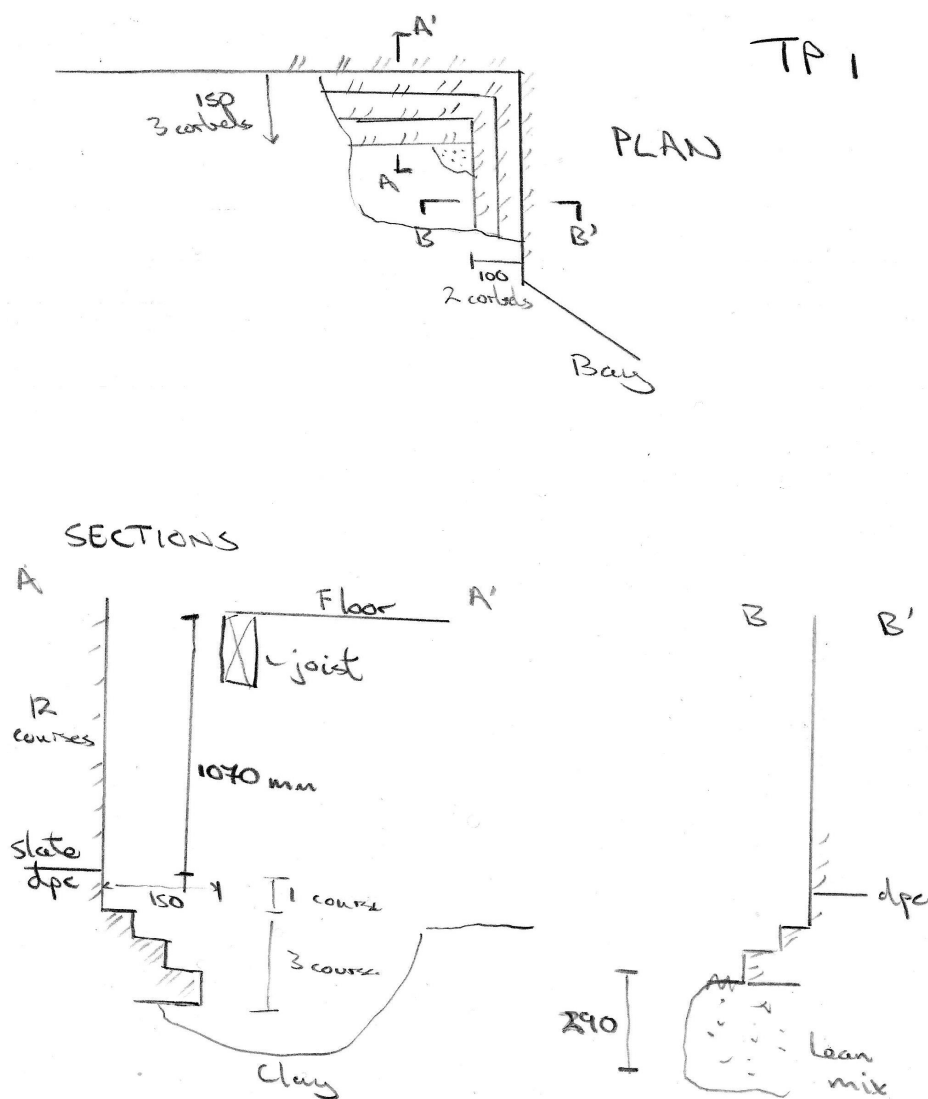




TRIAL PIT LOG

Project:			Project No.		Trial Pit:	
3 Aldred Road, London, NW6 1AN			15-190.03		TP1	
Client:			Start:		End:	
Private Client on behalf of Pawlik + Wiedmer			11.06.15		11.06.15	
Method/Plant Used:			Co-ordinates:		Ground Level:	
by hand			NT		NT	
Sheet: 1 of 1						

Trial Hole Sketch and Log



Water level observations (depths in metres below gl)

Date	Water strike	Water level (after 20mins)	Flow	Standing level	Remarks
11.06.15	No	No	No	No	
			By	Date	
Logged			DN	11.06.15	
Checked			JB	01.07.15	Scale NTS

Remarks

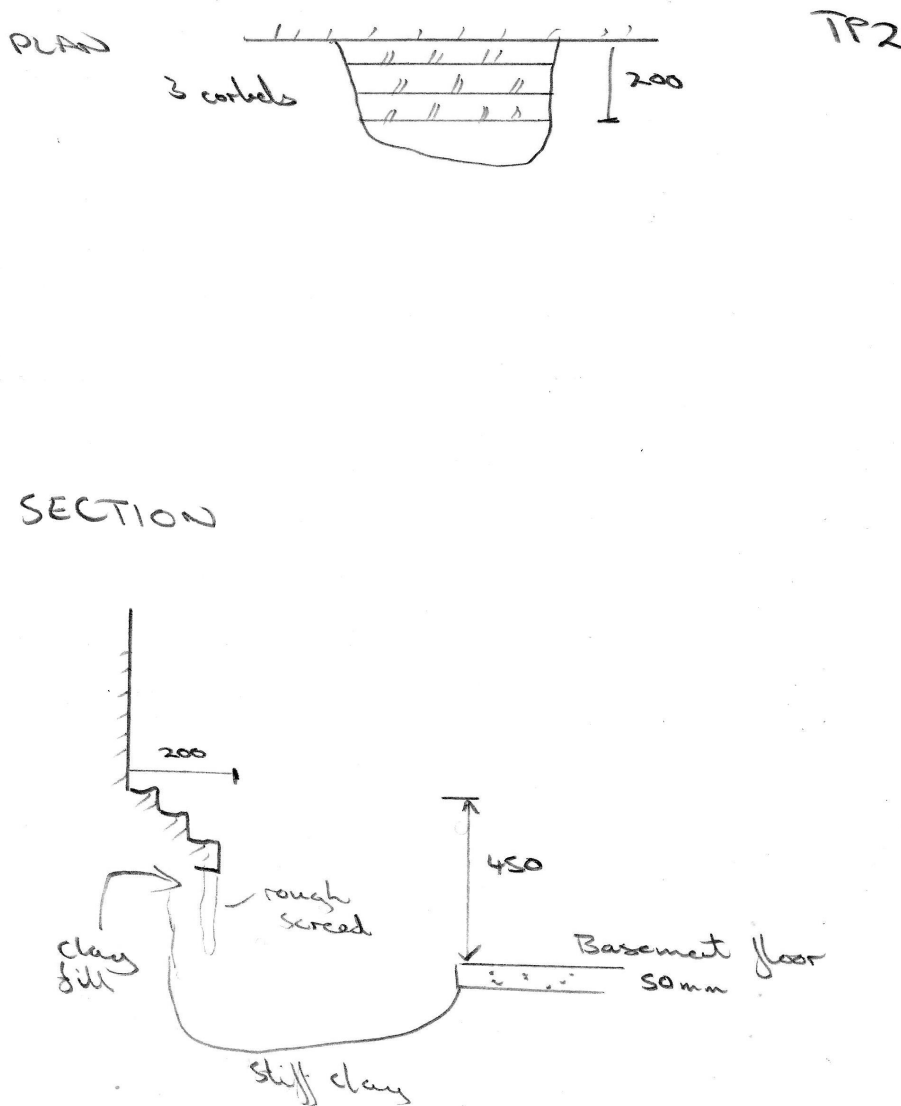
Left open for engineer inspection
Trial pit dry
Dimensions in mm
Base of footing proven with bar.
Floor boards replaced upon completion



TRIAL PIT LOG

Project: 3 Aldred Road, London, NW6 1AN			Project No. 15-190.03	Trial Pit: TP2
Client: Private Client on behalf of Pawlik + Wiedmer		Start: 11.06.15	End: 11.06.15	Sheet: 1 of 1
Method/Plant Used: by hand	Co-ordinates: NT		Ground Level: NT	

Trial Hole Sketch and Log



Water level observations (depths in metres below gl)

Date	Water strike	Water level (after 20mins)	Flow	Standing level	Remarks
11.06.15	No	No	No	No	
			By	Date	
			Logged	DN	11.06.15
			Checked	JB	01.07.15
					Scale NTS

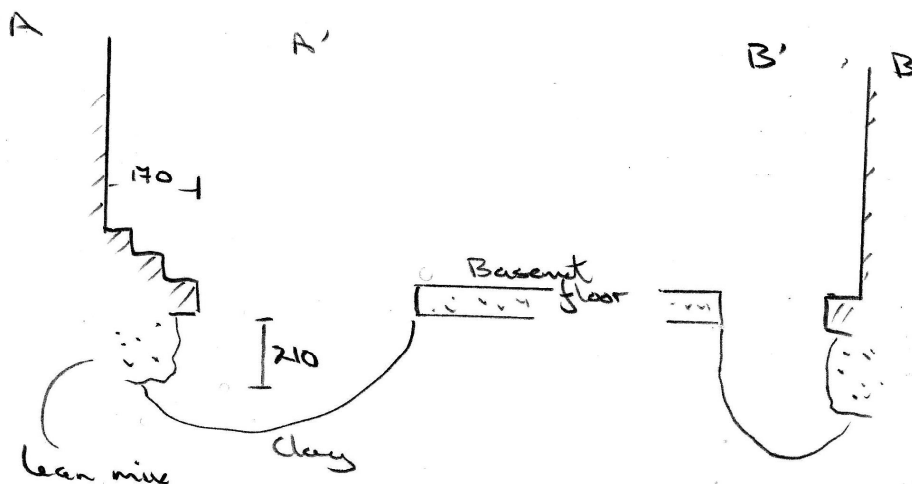
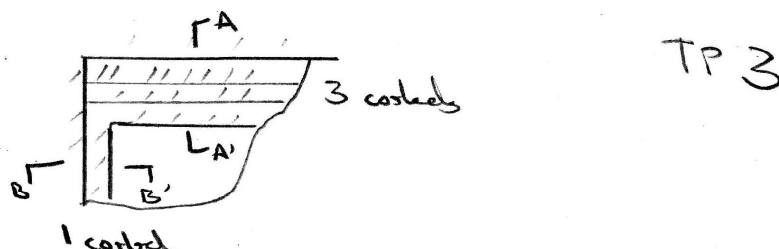
Remarks
 Left open for engineer inspection
 Trial pit dry
 Dimensions in mm
 Base of footing proven with bar.
 Backfilled and reinstated with concrete capping



TRIAL PIT LOG

Project: 3 Aldred Road, London, NW6 1AN		Project No. 15-190.03	Trial Pit: TP3
Client: Private Client on behalf of Pawlik + Wiedmer		Start: 11.06.15	End: 11.06.15
Method/Plant Used: by hand		Co-ordinates: NT	Ground Level: NT
		Sheet: 1 of 1	

Trial Hole Sketch and Log



Water level observations (depths in metres below gl)

Date	Water strike	Water level (after 20mins)	Flow	Standing level	Remarks
11.06.15	No	No	No	No	
			By	Date	
			Logged	DN	11.06.15
			Checked	JB	01.07.15
			Scale NTS		

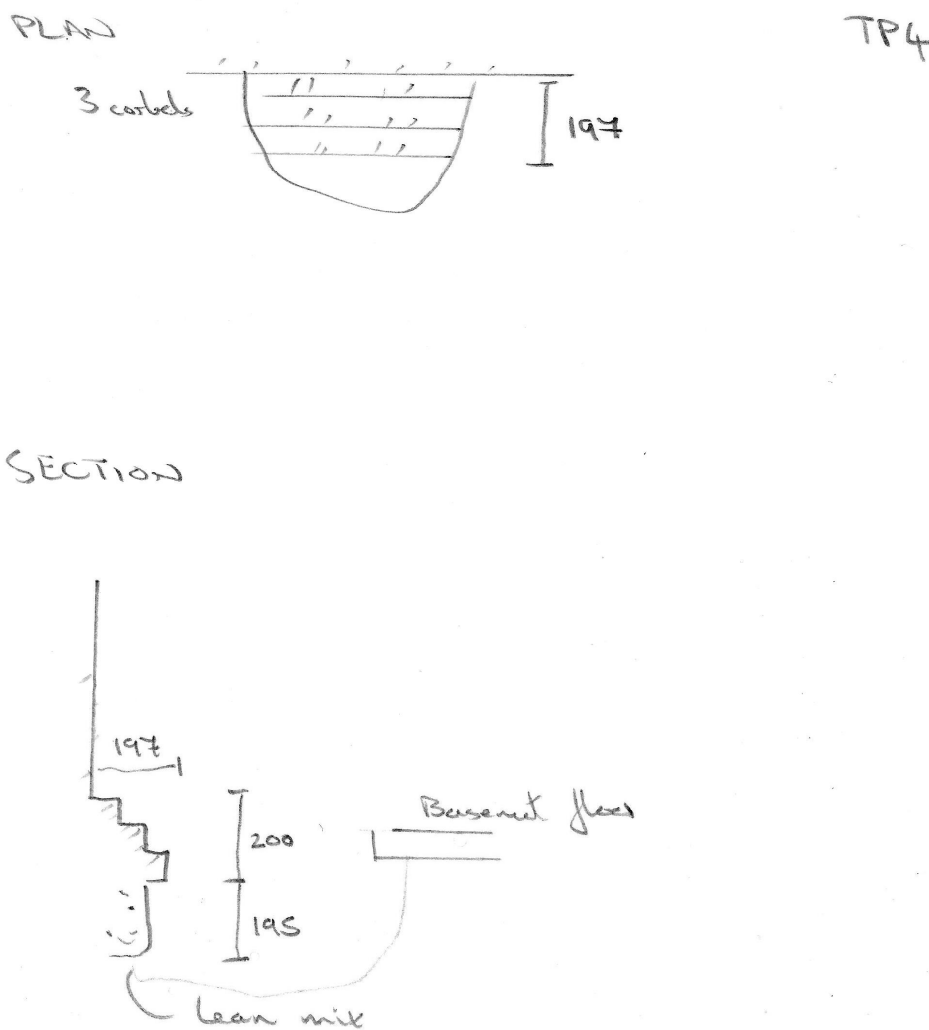
Remarks
 Left open for engineer inspection
 Trial pit dry
 Dimensions in mm
 Base of footing proven with bar.
 Backfilled and reinstated with concrete capping



TRIAL PIT LOG

Project: 3 Aldred Road, London, NW6 1AN		Project No. 15-190.03	Trial Pit: TP4
Client: Private Client on behalf of Pawlik + Wiedmer		Start: 11.06.15	End: 11.06.15
Method/Plant Used: by hand		Co-ordinates: NT	Ground Level: NT
		Sheet: 1 of 1	

Trial Hole Sketch and Log



Water level observations (depths in metres below gl)

Date	Water strike	Water level (after 20mins)	Flow	Standing level	Remarks
11.06.15	No	No	No	No	
			By	Date	
			Logged	DN	11.06.15
			Checked	JB	01.07.15
					Scale NTS

Remarks
 Left open for engineer inspection
 Trial pit dry
 Dimensions in mm
 Base of footing proven with bar.
 Backfilled and reinstated with concrete capping



TRIAL PIT LOG

Project: 3 Aldred Road, London, NW6 1AN		Project No. 15-190.03	Trial Pit: TP5
Client: Private Client on behalf of Pawlik + Wiedmer		Start: 11.06.15	End: 11.06.15
Method/Plant Used: by hand		Co-ordinates: NT	Ground Level: NT
		Sheet: 1 of 1	

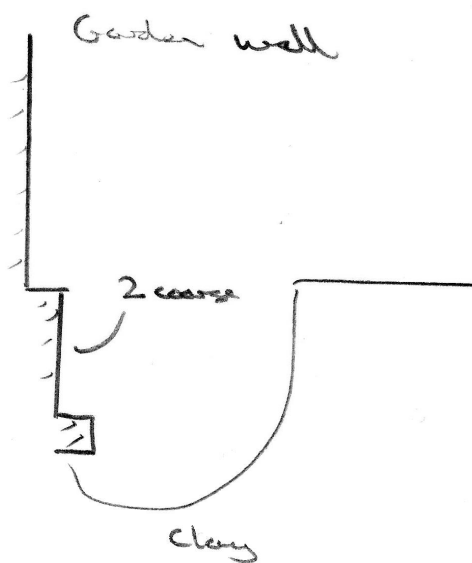
Trial Hole Sketch and Log

PLAN



TP5

SECTION



Water level observations (depths in metres below gl)

Date	Water strike	Water level (after 20mins)	Flow	Standing level	Remarks
11.06.15	No	No	No	No	
			By	Date	
			Logged	DN	11.06.15
			Checked	JB	01.07.15
			Scale NTS		

Remarks

Left open for engineer inspection
Trial pit dry
Dimensions in mm
Base of footing proven with bar.
Backfilled and reinstated with concrete capping

PHOTOGRAPHIC LOG

SITE 3 Aldred Rd

DATE 11.06.15

PROJECT 15-190.03

TAKEN BY DN



TP1



TP2



TP3

PHOTOGRAPHIC LOG

SITE 3 Aldred Rd

DATE 11.06.15

PROJECT 15-190.03

TAKEN BY DN



TP4



TP5