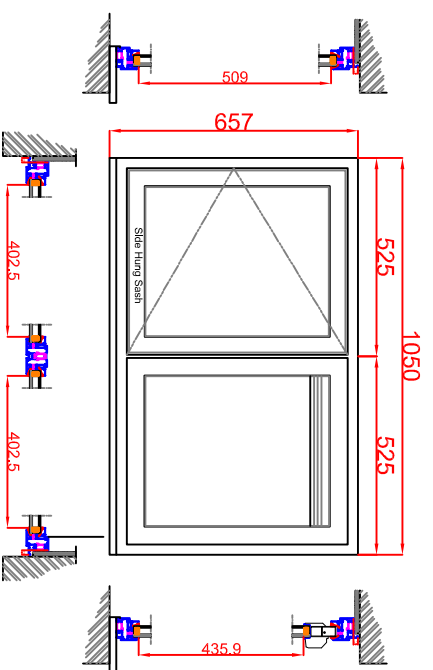
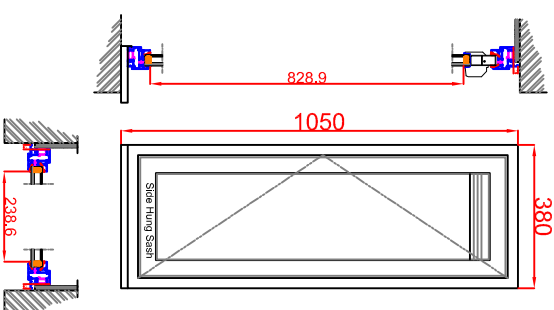


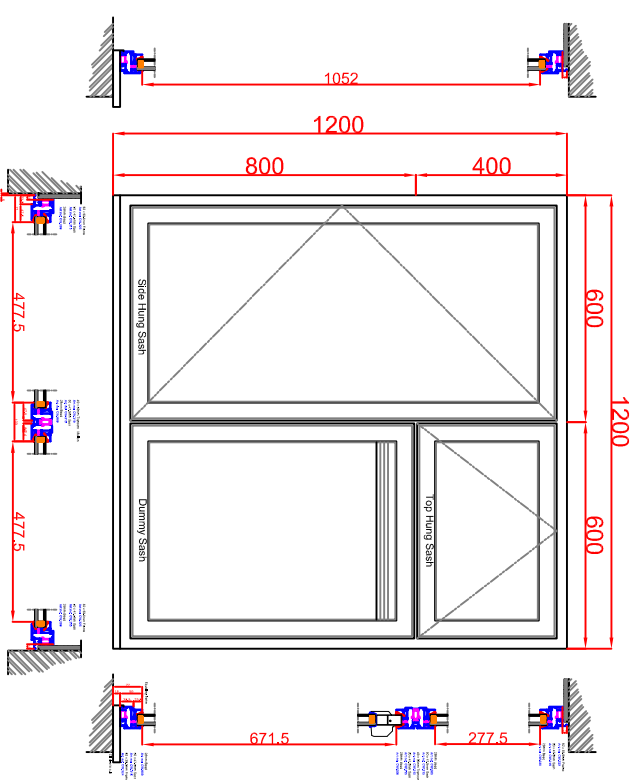
W8 (GF)



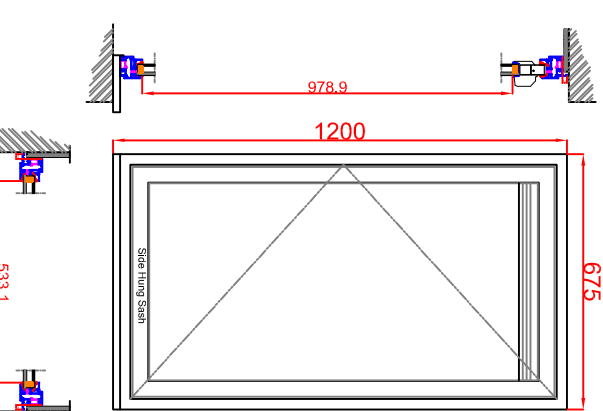
1:20



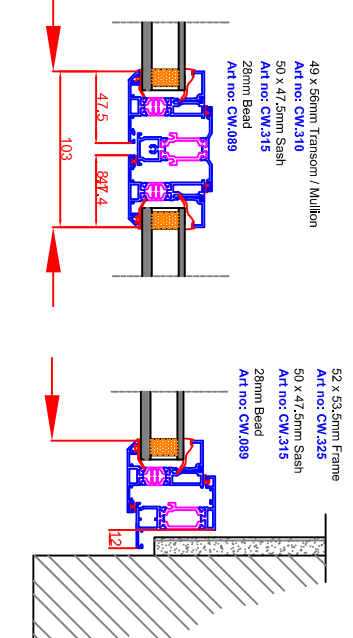
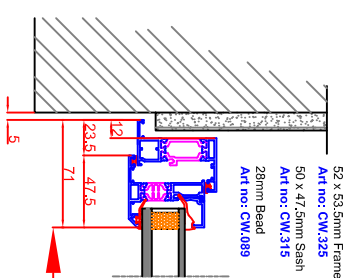
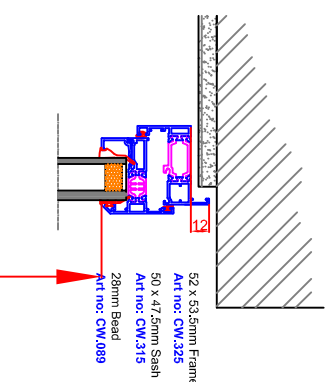
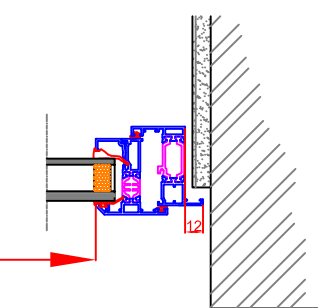
W9 (GF)



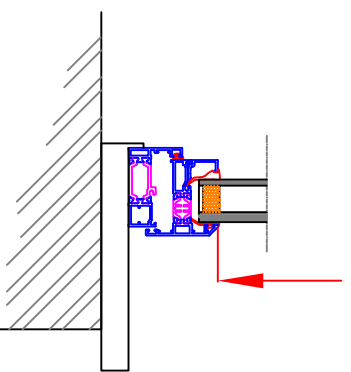
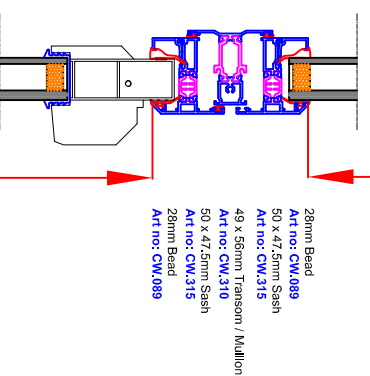
W2 (GF)



W4 (GF)



1:5



Vertical & Horizontal sections for frame type W2

1:5

Sovereign Group Ltd. has made every effort to ensure that the information contained on this drawing is correct, but cannot be held responsible for errors or omissions. This drawing must not be copied or used for any other purpose other than for which it is supplied without the consent from Sovereign Group Limited.



sovereign group limited

Commercial Fabricators of PVCu Windows & Doors

Head Office: Vale St, Nelson, Lancs, BB9 0TA
T: 01282 618171
E: sales@sovereignltd.co.uk
W: www.sovereignltd.co.uk
www.sovereigncommercial.co.uk

Drawn: **2 April 2015**

Scale: **1:20 / 1:5**
Part No: **A.3**
Contract No: **SC.24940/1**

Title: **Typical sectionsCarregie House**

Client: **L.B Camden**