

INFORMATION

Project
St Joseph's Primary School
Holborn

Drawing Title
Site Location Plan
Annotated

Date	Scale	Drawn by	Check by
08.07.15	1:200@A3	AB	JC
Project No	Drawing No	Revision	
23171	SK-PL-001	-	



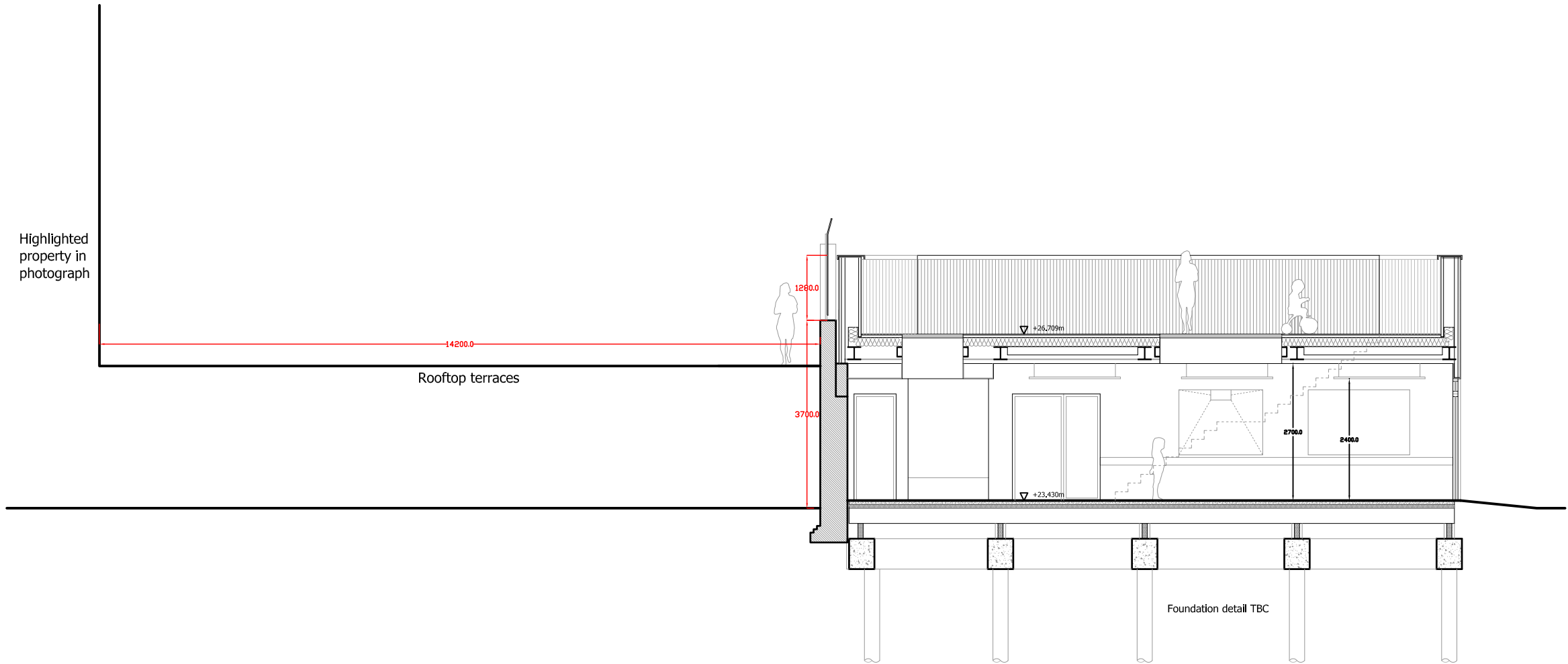
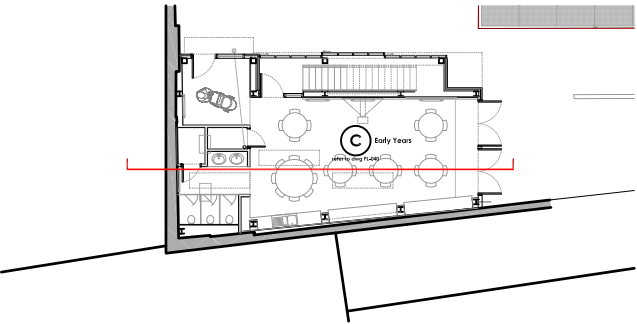
**BARTON
WILLMORE**

Planning • Master Planning & Urban Design
Architecture • Landscape Planning & Design • Project Services
Environmental & Sustainability Assessment • Graphic Design

bartonwillmore.co.uk



Offices at Reading London Bristol Cambridge Cardiff Ebbsfleet Edinburgh Leeds Manchester Solihull



PLANNING

Project
St Joseph's Primary School
Holborn

Drawing Title
Proposed Section Extended
Early Years Section AA

Date	Scale	Drawn by	Check by
08.07.15	1:100@A3	AB	TC

Project No	Drawing No	Revision
23171	SK-SE-042	-



Planning • Master Planning & Urban Design
Architecture • Landscape Planning & Design • Project Services
Environmental & Sustainability Assessment • Graphic Design

bartonwillmore.co.uk



Offices at Reading London Bristol Cambridge Cardiff Ebbsfleet Edinburgh Leeds Manchester Solihull

Highlighted property in photo

Powis House

St Josephs School



Parker House

Location of proposed nursery

St Josephs School

Highlighted property in photo

Powis House



Parker House

Location of proposed nursery