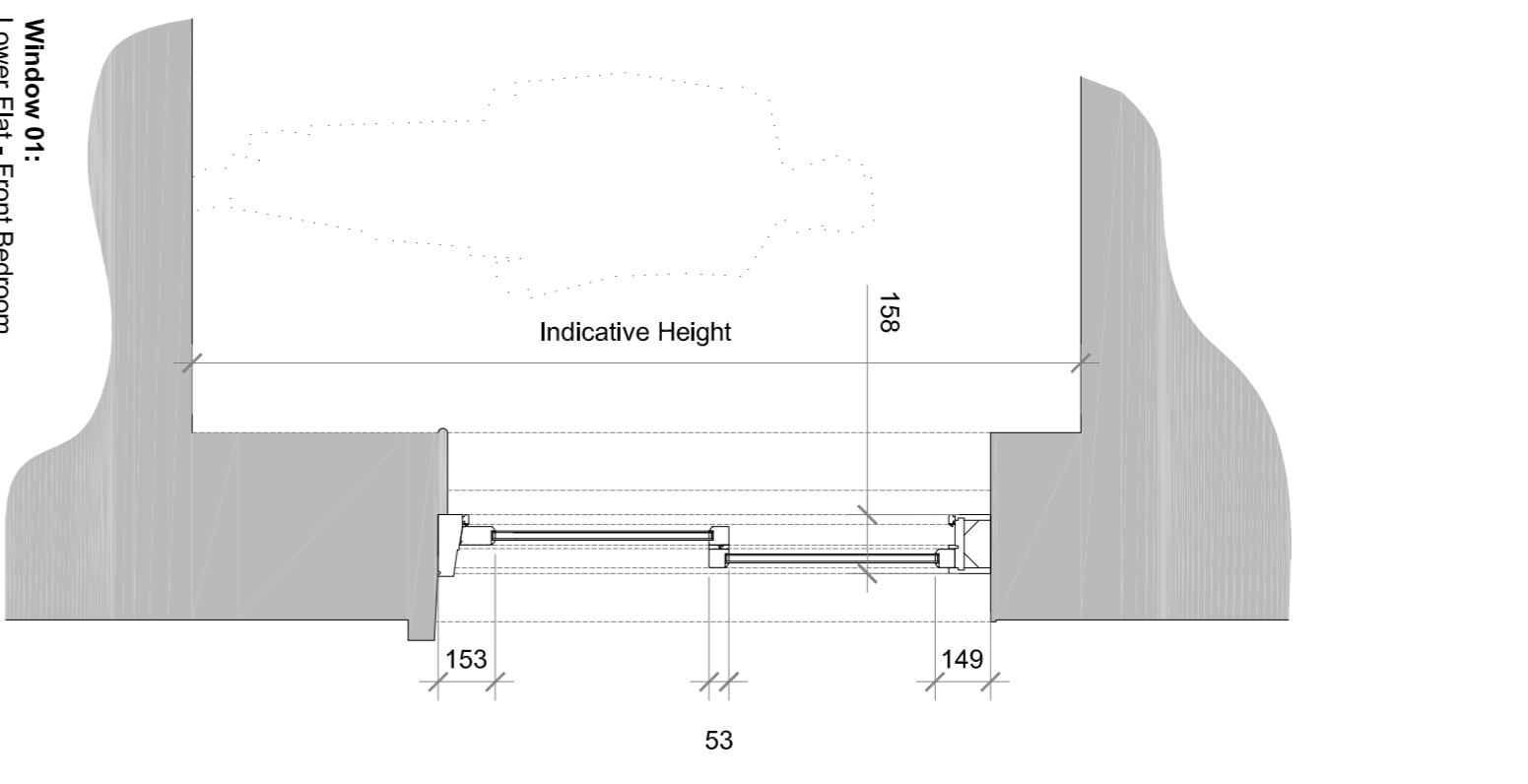
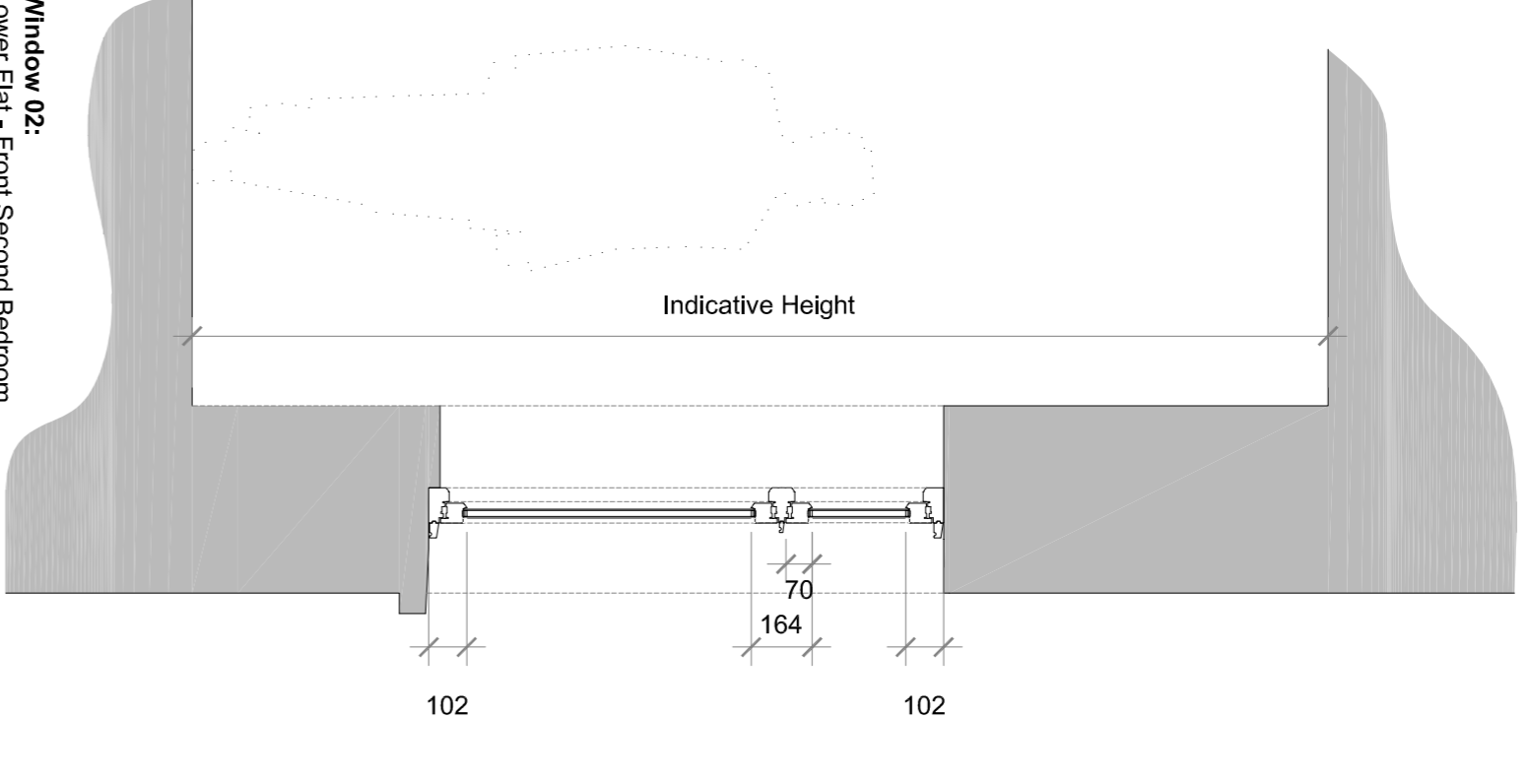


All drawings to be worked on site by Main Contractor before the start of any site drawings or work whatsoever either on their own behalf or that of sub-contractors.  
Report any discrepancies to the Contract Administrator at once.  
This document is to be read with all relevant Architects and Engineers' drawings and other relevant information.  
© Ingletton Wood LLP

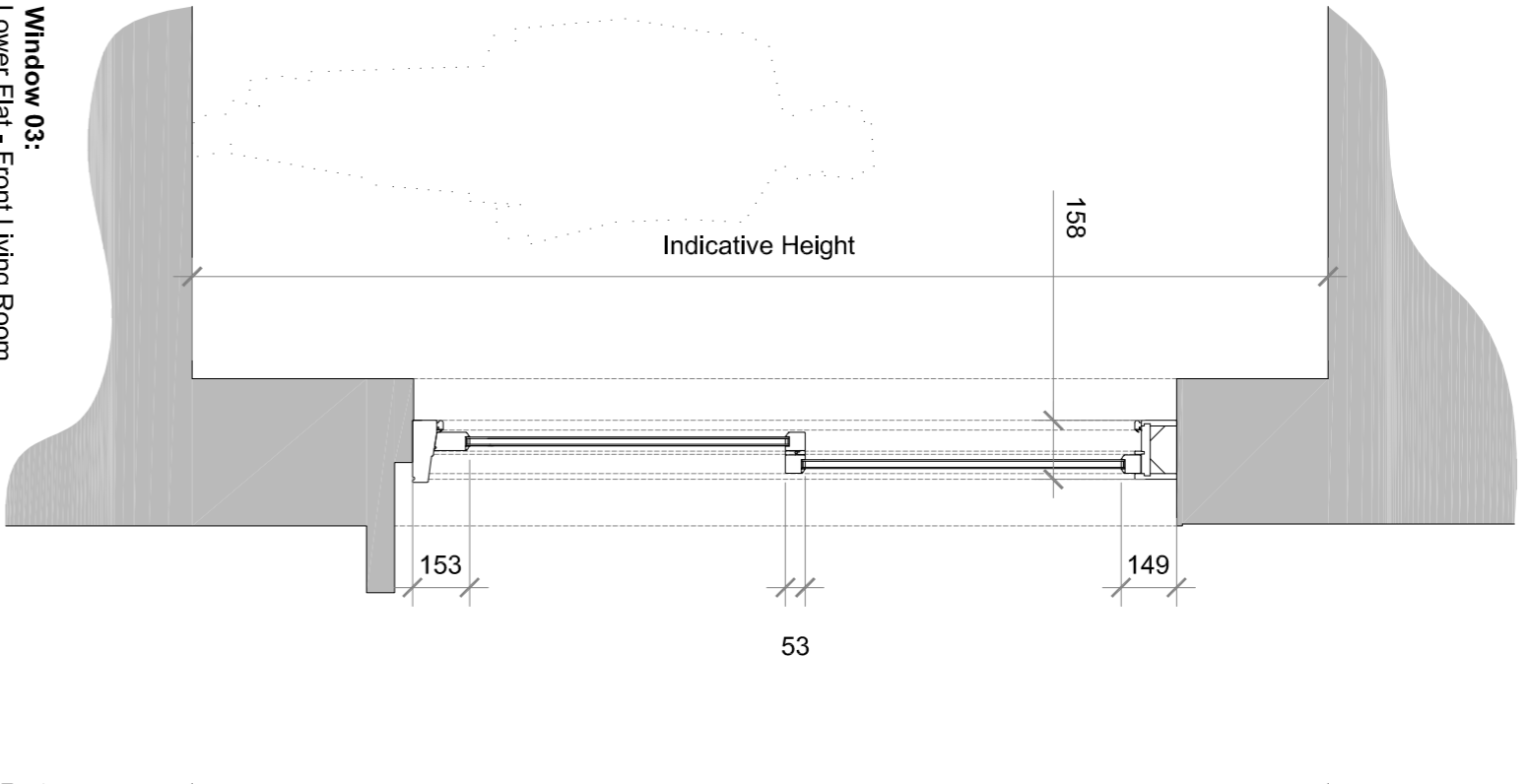
LEGEND: DO NOT SCALE



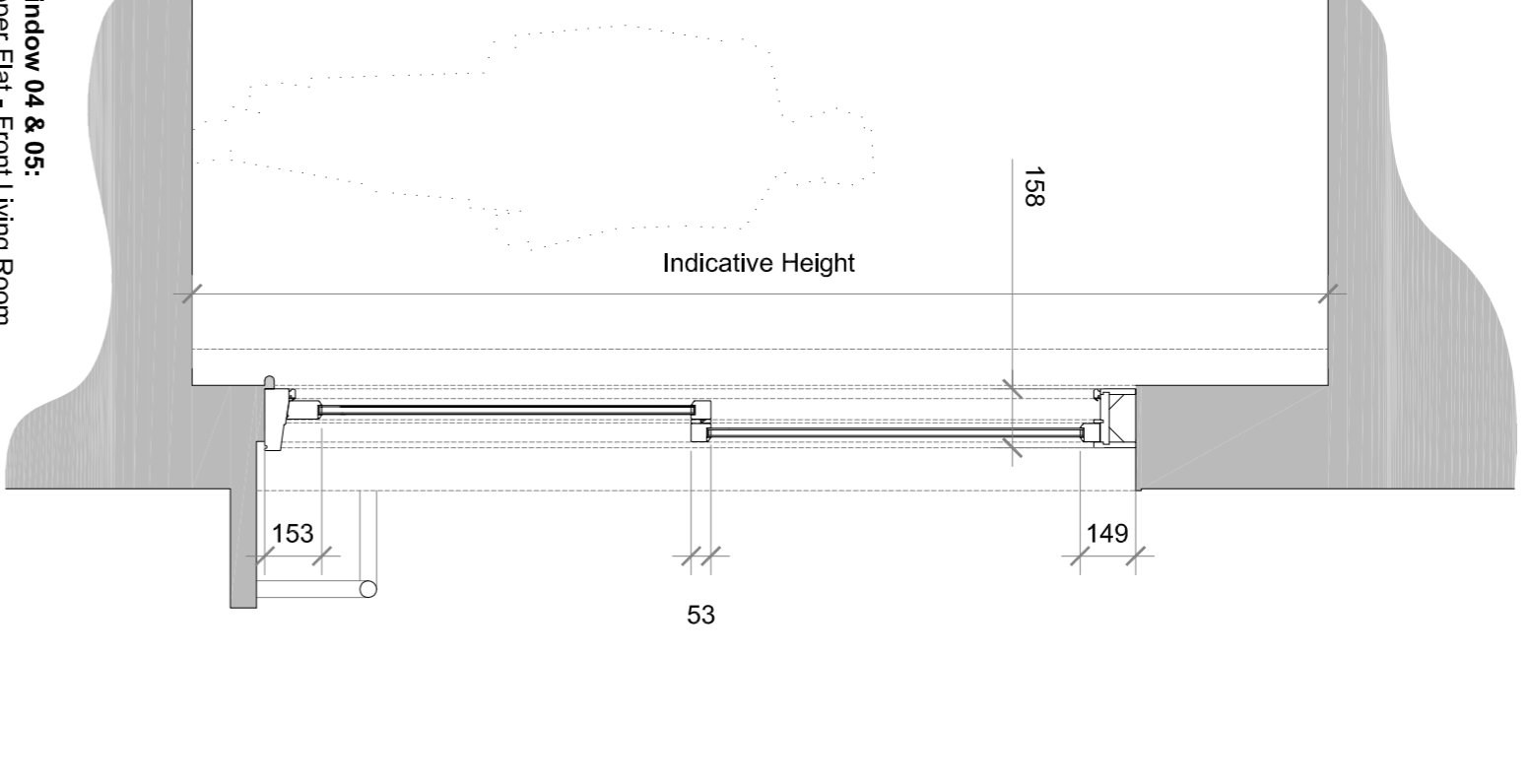
- Window 01:**  
Lower Flat - Front Bedroom
- Timber backframe sash window.
  - 53mm frame thickness
  - Top horns
  - Clear double glazed



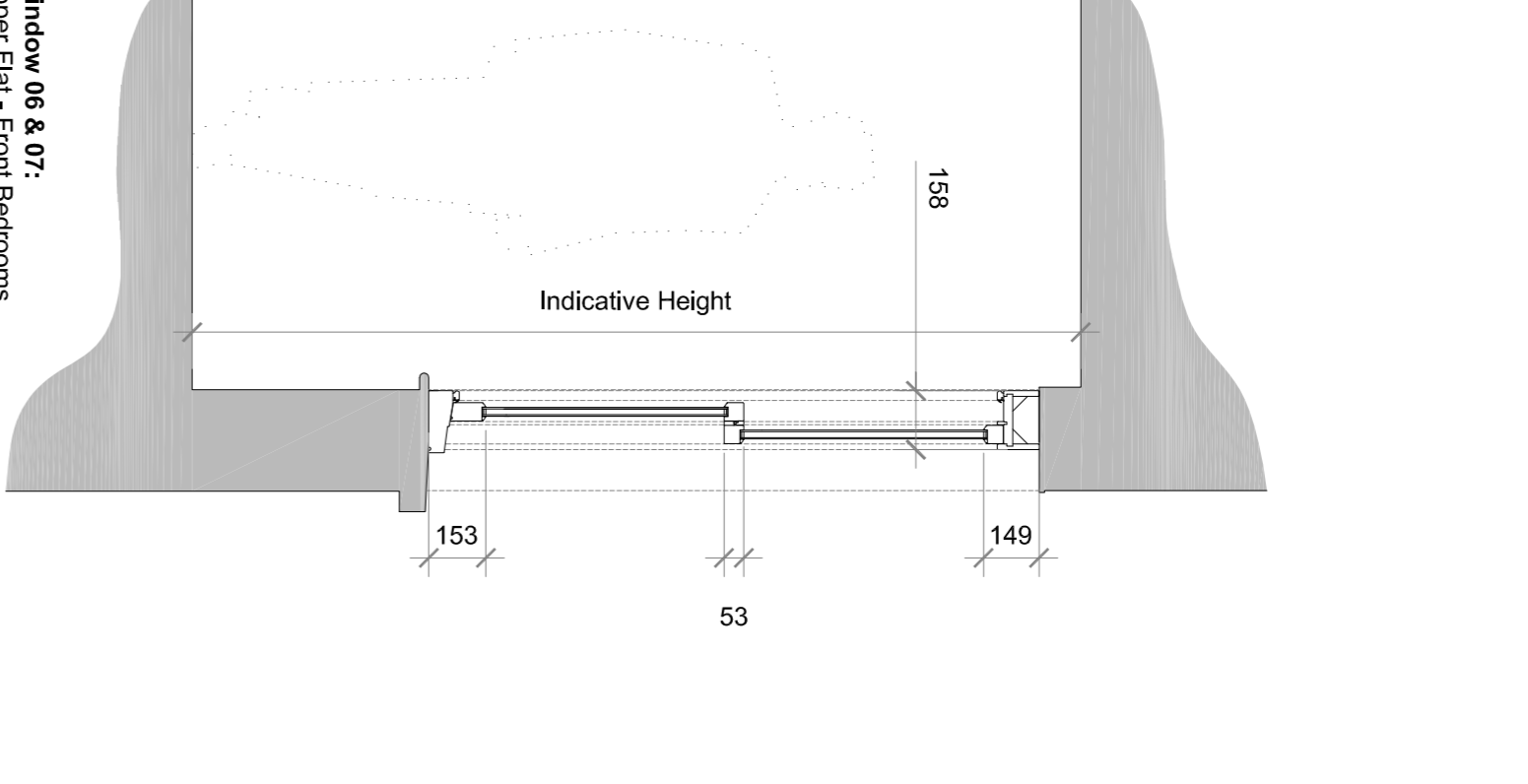
- Window 02:**  
Lower Flat - Front Second Bedroom
- Timber casement window.
  - 53mm frame thickness
  - No horns
  - Clear double glazed



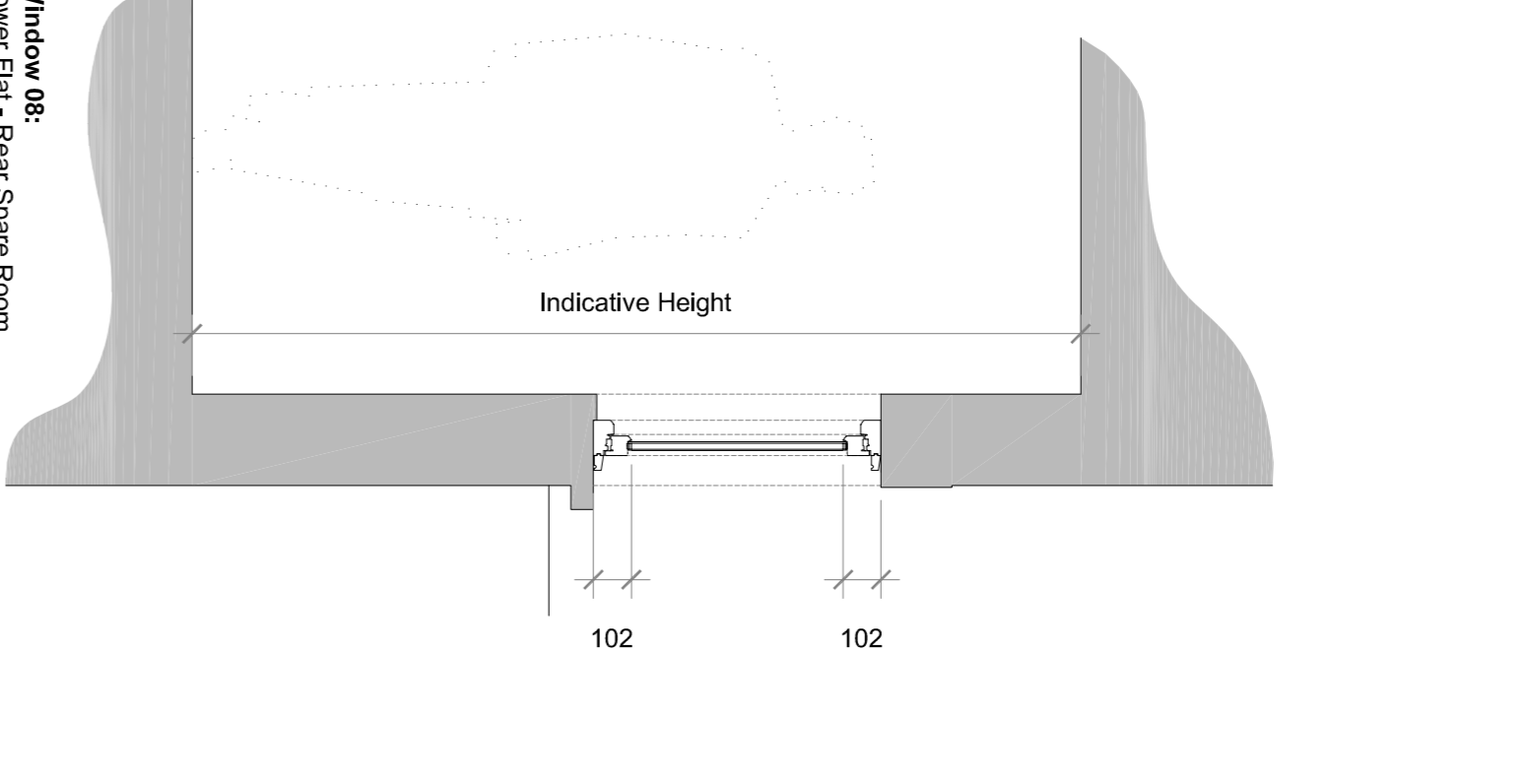
- Window 03:**  
Lower Flat - Front Living Room
- Timber backframe sash window.
  - 53mm frame thickness
  - Top horns
  - Clear double glazed



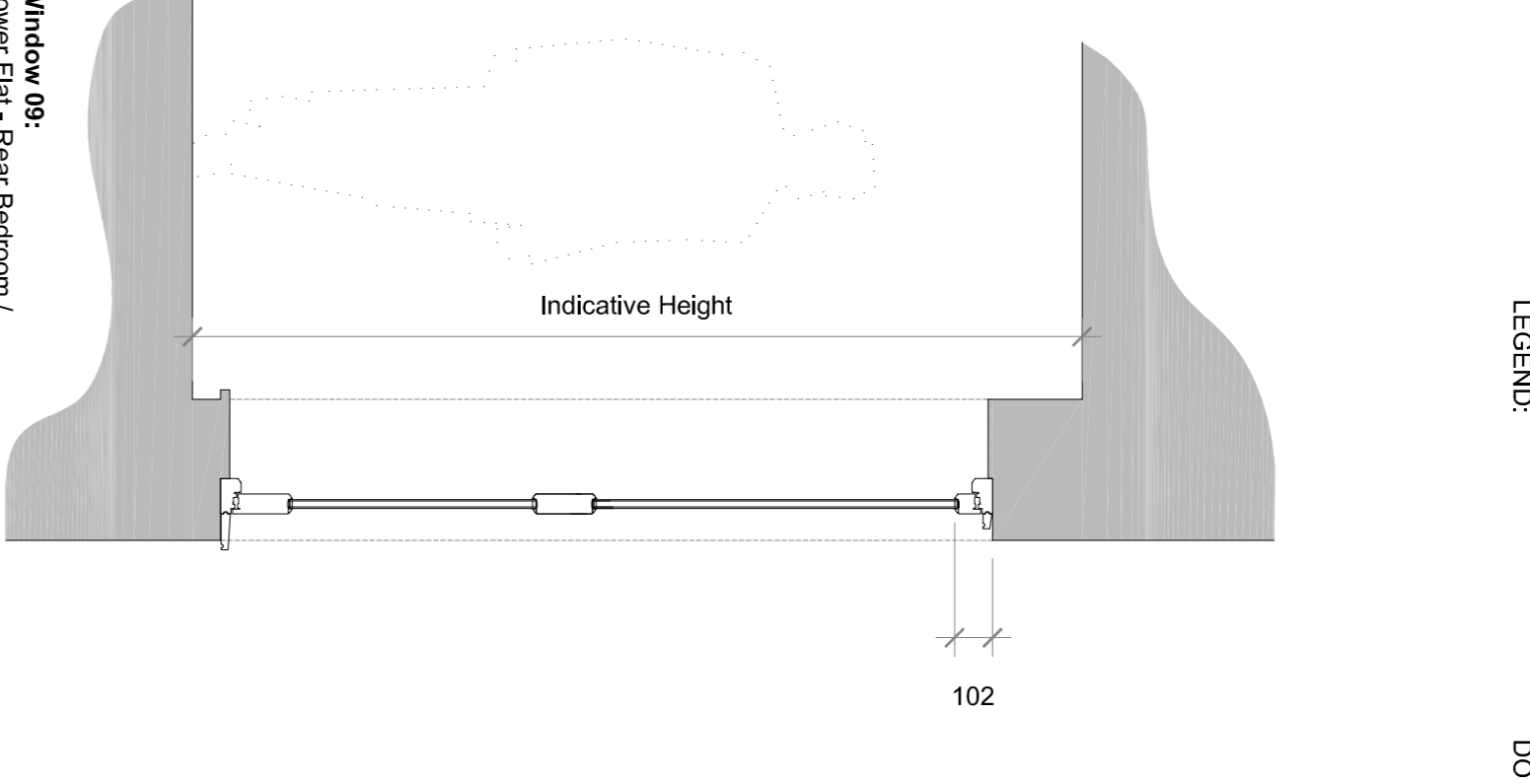
- Window 04 & 05:**  
Upper Flat - Front Living Room
- Timber backframe sash window.
  - 53mm frame thickness
  - Top & bottom horns
  - Clear double glazed



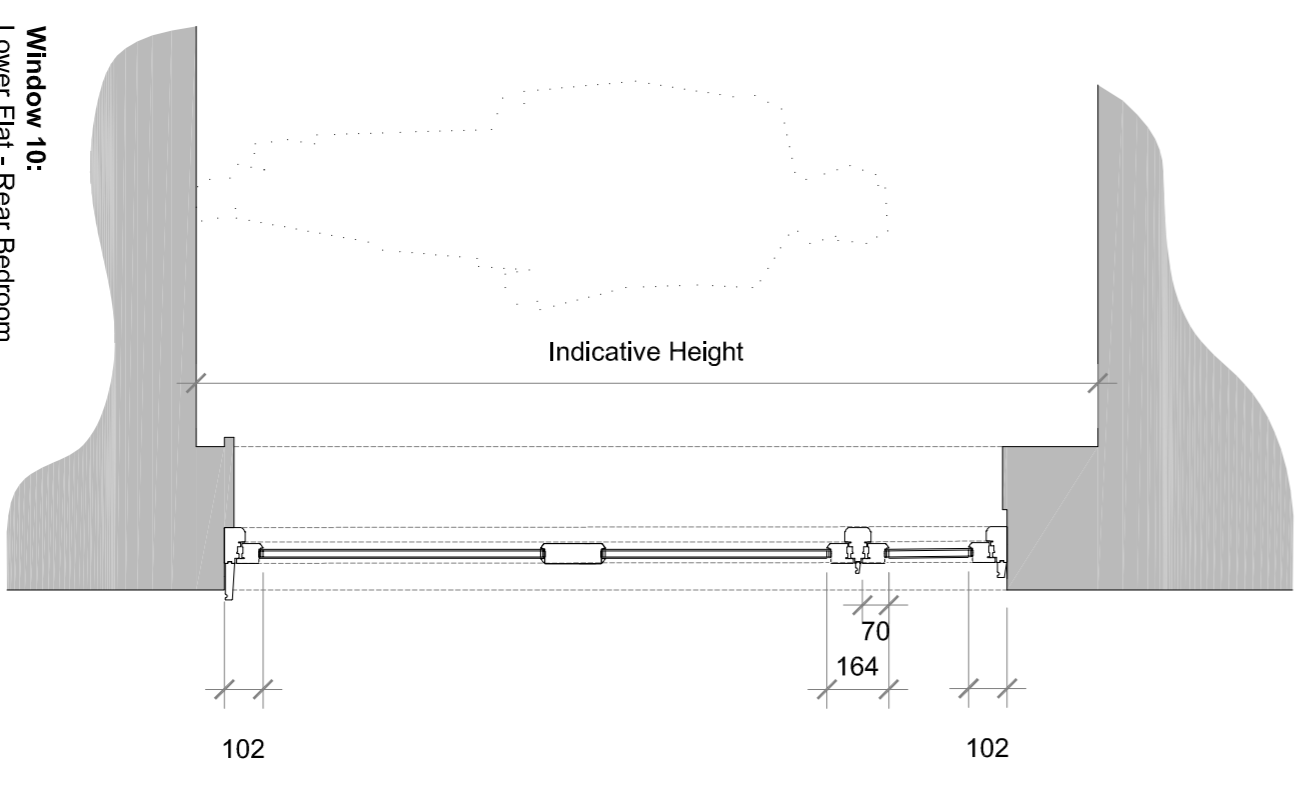
- Window 06 & 07:**  
Upper Flat - Front Bedrooms
- Timber backframe sash window.
  - 53mm frame thickness
  - Top horns
  - Clear double glazed



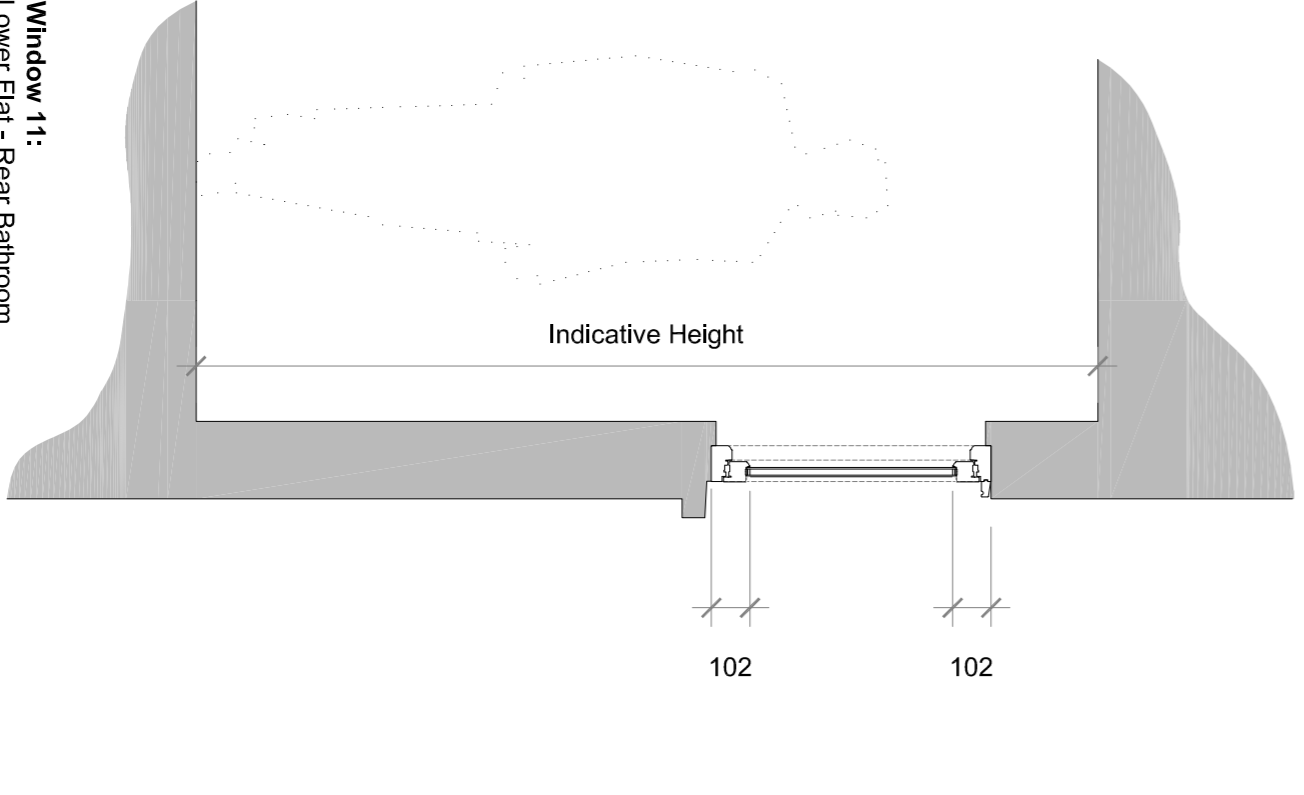
- Window 08:**  
Lower Flat - Rear Spare Room
- Timber casement window.
  - No horns
  - Clear double glazed



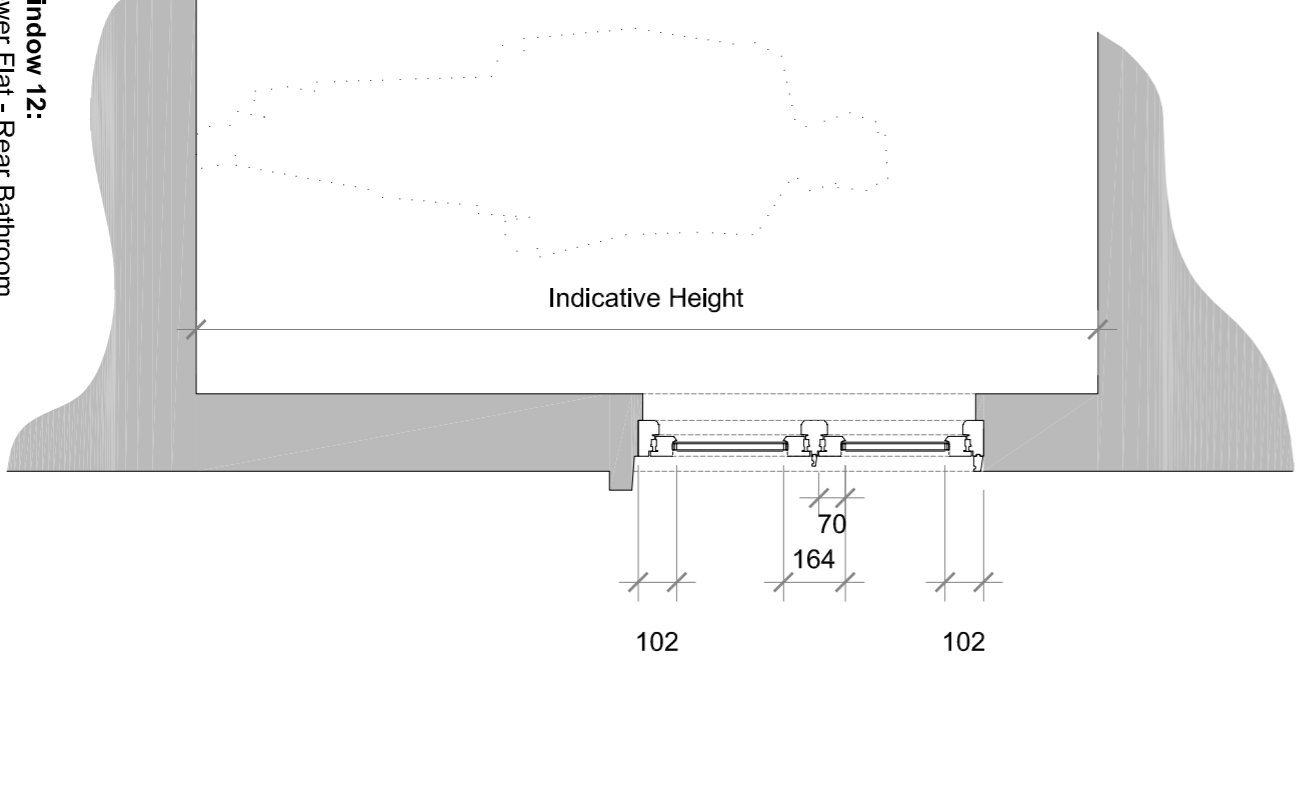
- Window 09:**  
Lower Flat - Rear Bedroom / Back Door
- Timber casement window.
  - Extended sill
  - Clear double glazed



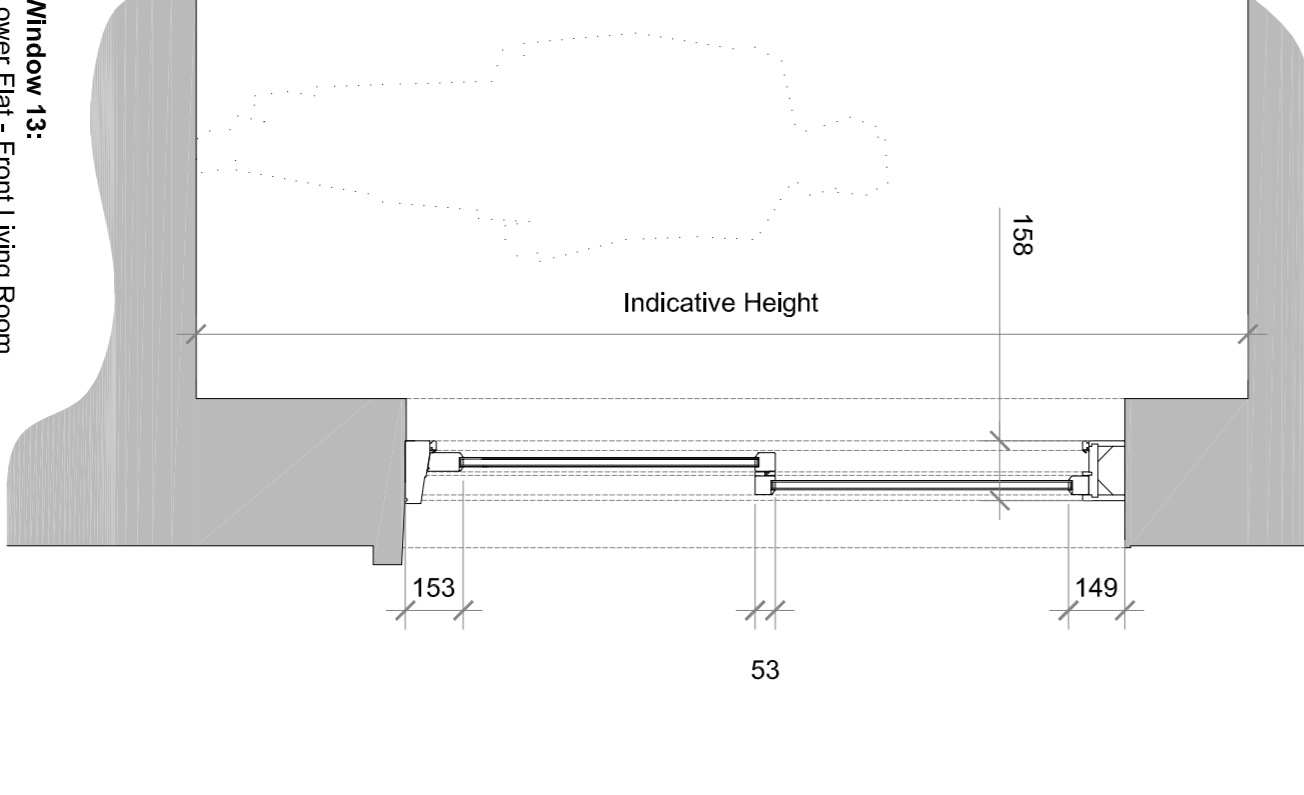
- Window 10:**  
Lower Flat - Rear Bedroom
- Timber casement window.
  - 53mm frame thickness
  - No horns
  - Extended sill
  - Clear / Obscure double glazed



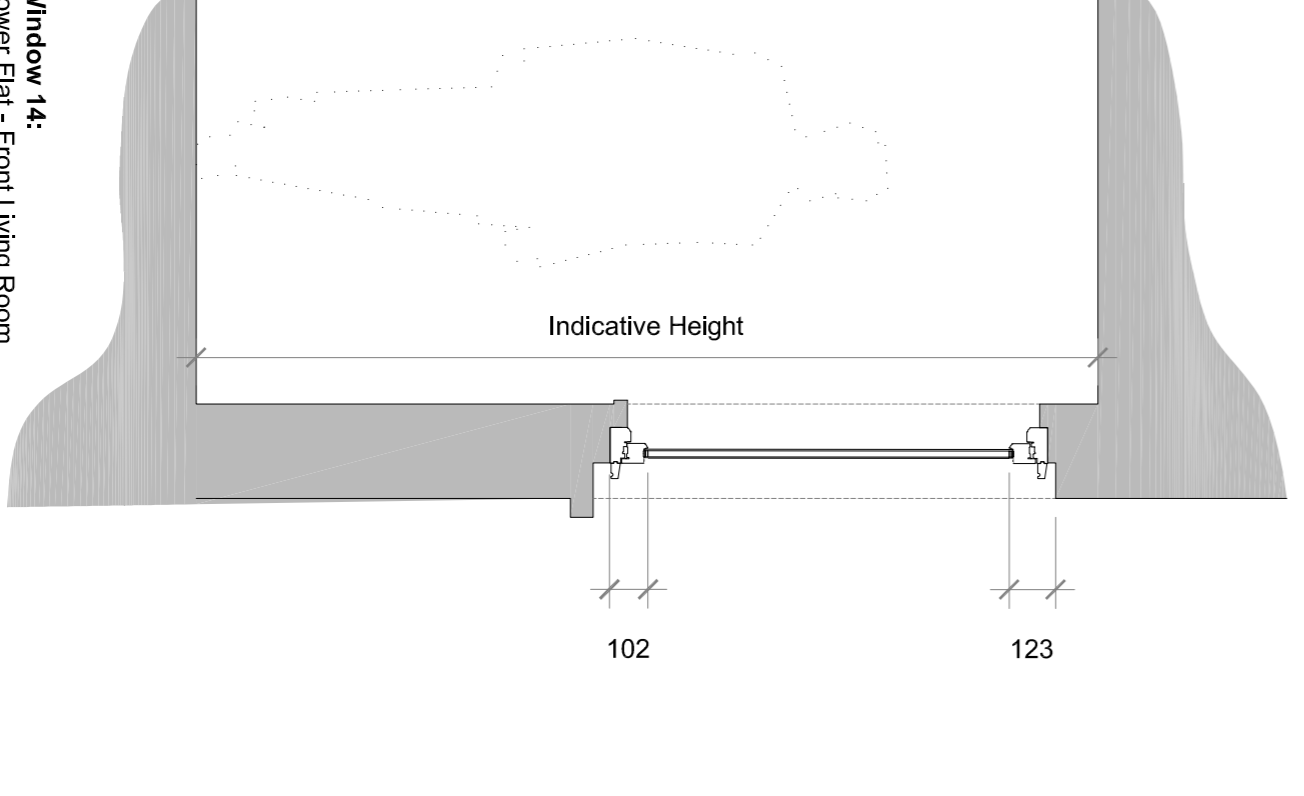
- Window 11:**  
Lower Flat - Rear Bathroom
- Timber casement window.
  - 53mm frame thickness
  - No horns
  - Obscure double glazed



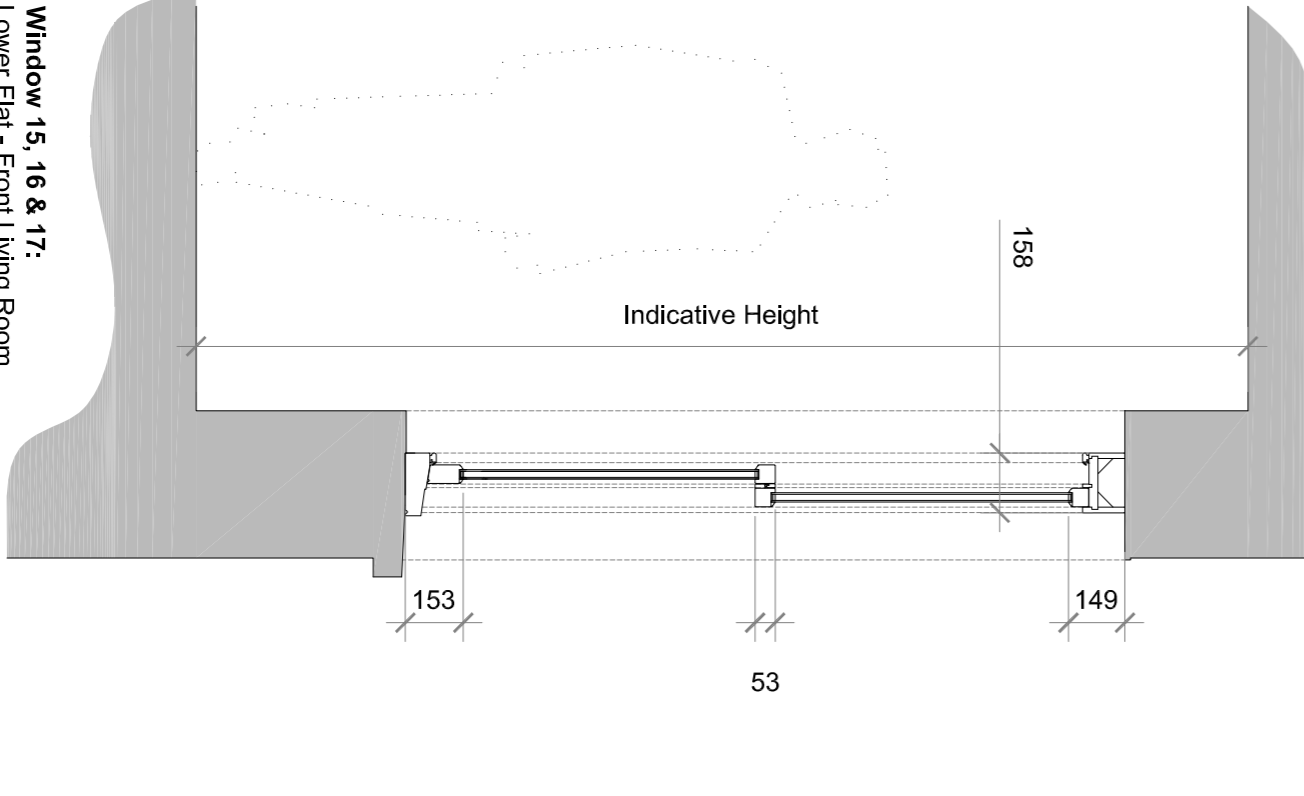
- Window 12:**  
Lower Flat - Rear Bathroom
- Timber backframe sash window.
  - 53mm frame thickness
  - No horns
  - Obscure double glazed



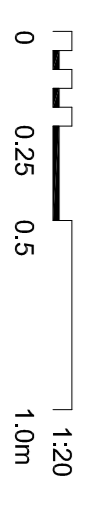
- Window 13:**  
Lower Flat - Front Living Room
- Timber backframe sash window.
  - 53mm frame thickness
  - No horns
  - Clear double glazed



- Window 14:**  
Lower Flat - Front Living Room
- Timber casement window.
  - 53mm frame thickness
  - No horns
  - Clear double glazed



- Window 15, 16 & 17:**  
Lower Flat - Front Living Room
- Timber backframe sash window.
  - 53mm frame thickness
  - Top & bottom horns
  - Clear double glazed



**Ingletton Wood**  
Vision, form and function

874 The Crescent  
Colchester Business Park  
Colchester CO4 7YD  
London E1 026 2ZJZD  
www.inglettonwood.co.uk

**Client:** One Housing Group  
**Project:** 99 Bartholomew Road  
London  
NW6 2AR

Drawn:	Checked:	Date:	Scale:	Paper Size:
SF	ST	22.07.15	1:20	A3
Job No:	Draw No:	Stage:	Revision:	
42833	004	Planning	-	