

Midland Goods Shed

Heritage Consent Report for Condition 2i

0613(RP)021
July 2015

Document Control

Document Title 0613(RP)021 Planning Consent Report

Contributions

Name Helen Lee
Company Bennetts Associates Architects
Location London

Revision \
Date 24/07/2015
Details First Issue for Approval

Authorisation

Name Edward Marchand
Title Associate
Address Bennetts Associates Architects
1 Rawstorne Place
London EC1V 7NL

Condition 2): Prior to commencement on the relevant part of the development hereby approved, details of supporting and lighting proposed Waitrose sign to the West Handyside Canopy including method of fixing to the canopy shall be submitted to and approved in writing by the local planning authority. Thereafter, the relevant part of the works shall not be carried out otherwise than in accordance with the details thus approved.



Design Approach

The approach for fixing the sign is intended to retain the integrity of the existing structure, so not part is drilled or screwed into. Rather the sign uses clamp fixings which do not damage the existing structure. Details are provided in the following pages.

Waitrose Kings Cross

Status

For approval
Do not manufacture to this pack

West Handyside Canopy Sign

Site address
Wharf Road
York Way
Kings Cross
London

Integrity contact
Tom Williams
email: tom.williams@integrity.co.uk

Issue	Issue date	Changes	By	Checked
A	26-05-2015	Issued for approval	TW	FS

Details

b3 Building Letters - 900mm cap height

Action - New installation

Quantity existing 0 Proposed 1

Size

Overall 5265.5mm (w) x 1077mm (h) x 113mm (d)
Cap height 900mm

Materials & colour

Face in Waitrose green (PMS370C) acrylic. Stainless steel returns, rear of letters finished to match RAL 7024 graphite grey (30% gloss).

Details

Signage granted consent under application **2014/1434/A**.
Letters suspended below Canopy as detailed on sub contractor drawings **23038A01 & 23038A02**.
Externally illuminated with slim surface mounted LED light bar. Please see sub contractor drawing **SL5** for full illumination details. Light bar to be located as shown on drawing **0613_P_501**.
Framework finished to match RAL 7024 graphite grey (30% gloss).

Waitrose

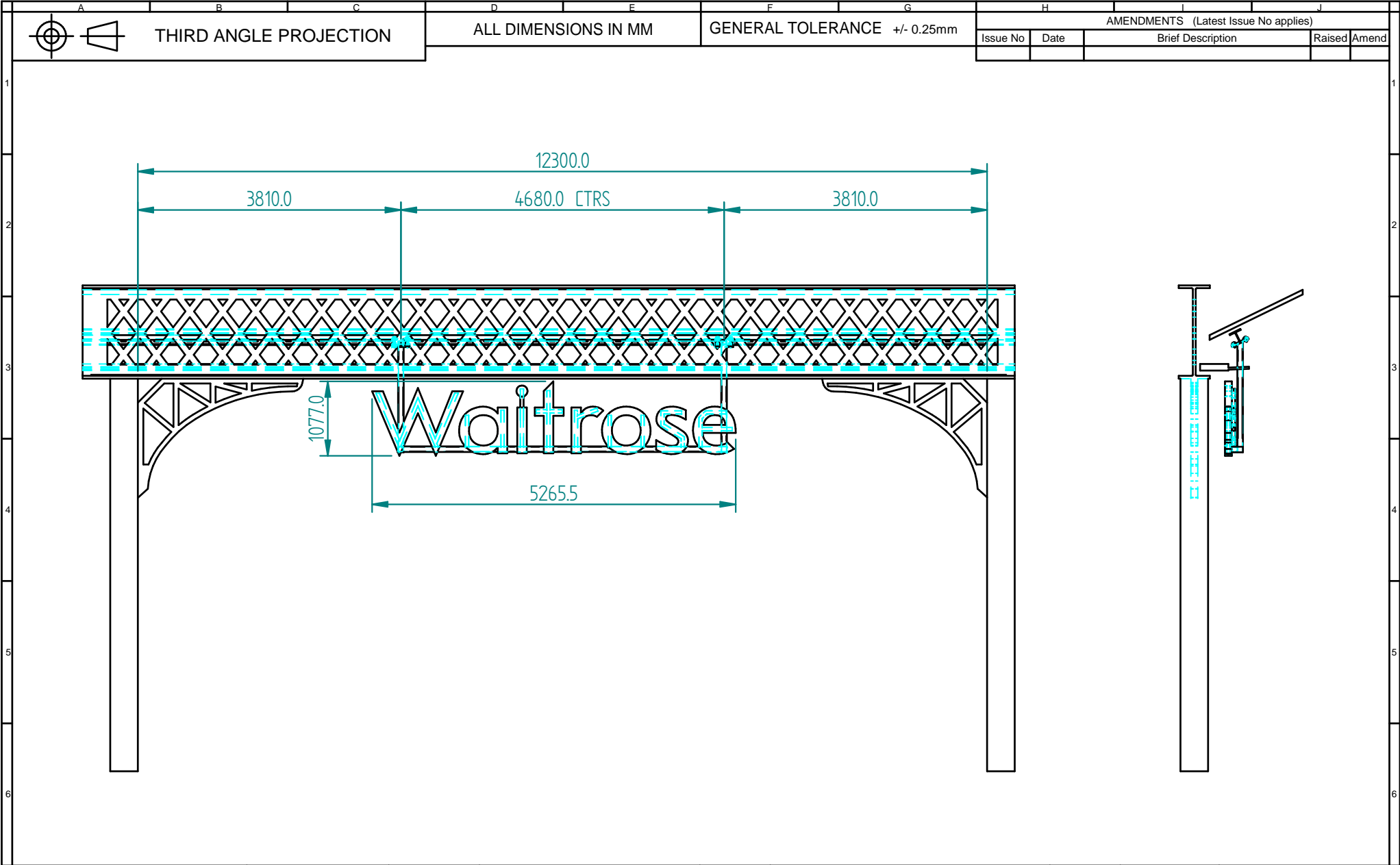
Scale 1:100


Waitrose

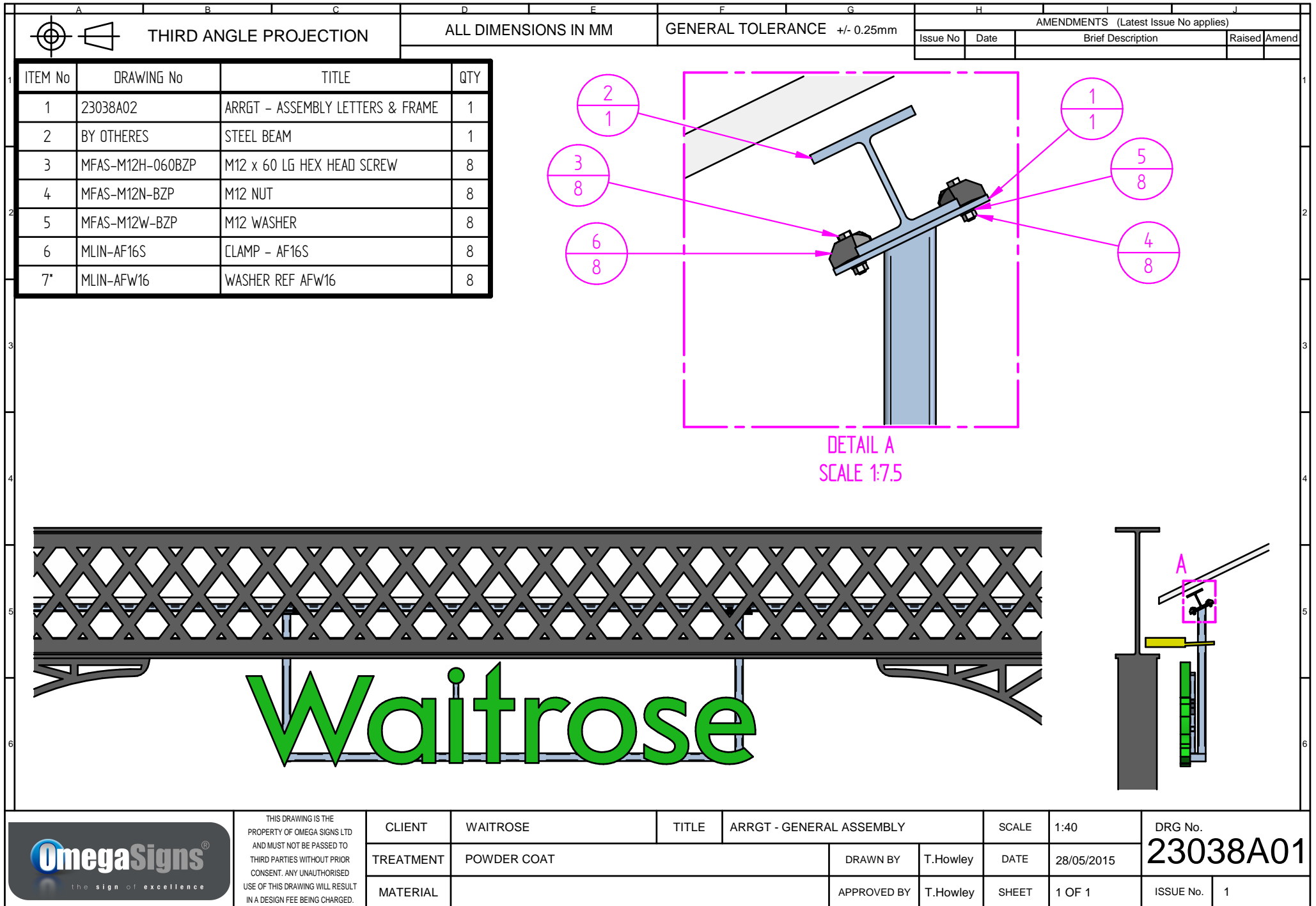
Scale NTS

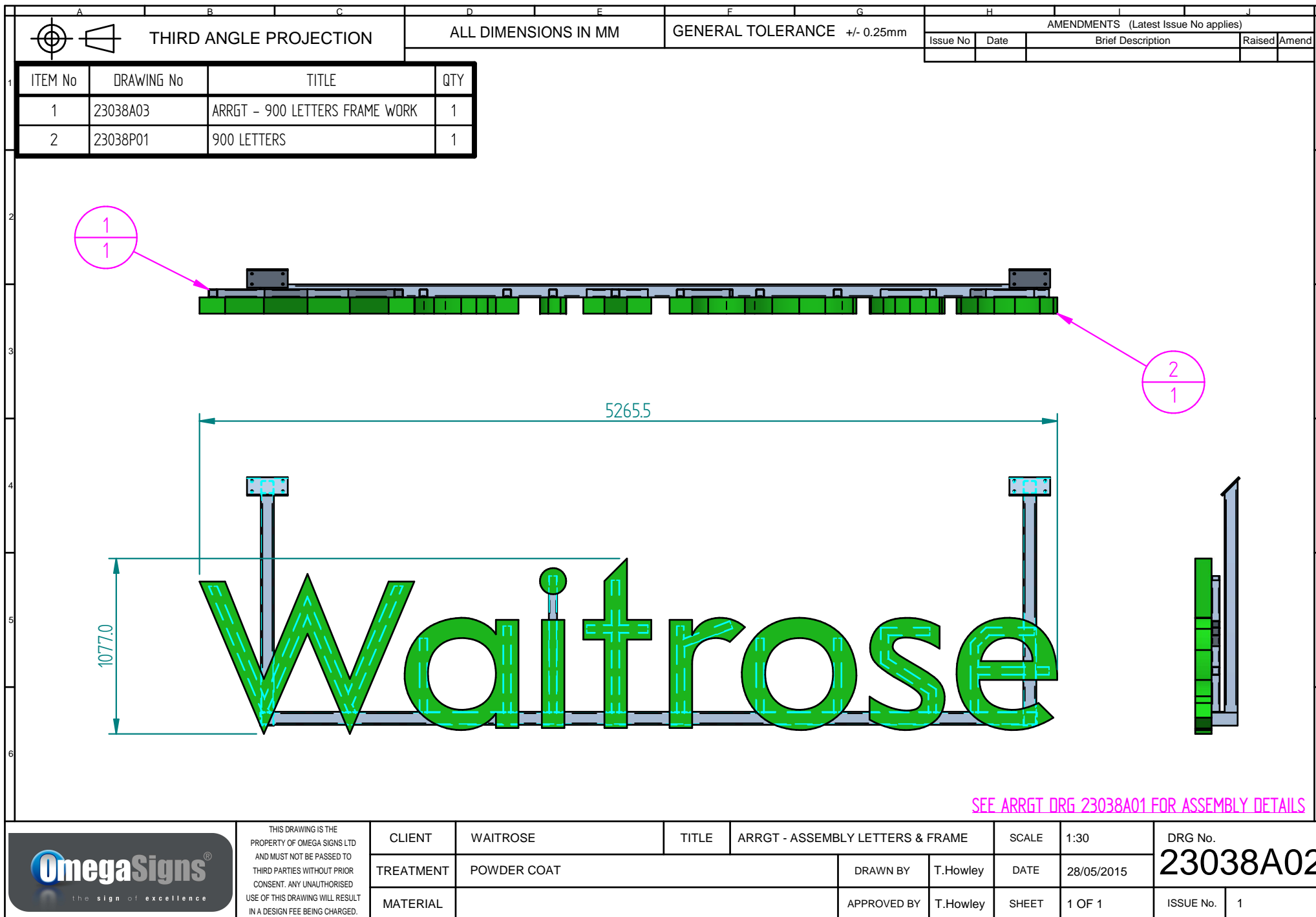


Elevation - NTS



 <div>THIS DRAWING IS THE PROPERTY OF OMEGA SIGNS LTD AND MUST NOT BE PASSED TO THIRD PARTIES WITHOUT PRIOR CONSENT. ANY UNAUTHORISED USE OF THIS DRAWING WILL RESULT IN A DESIGN FEE BEING CHARGED.</div>	CLIENT	WAITROSE	TITLE	ARRGT - GENERAL ASSEMBLY	SCALE	1:40	DRG No.	
	TREATMENT	POWDER COAT	DRAWN BY		T.Howley	DATE	28/05/2015	23038A01
	MATERIAL		APPROVED BY		T.Howley	SHEET	1 OF 1	ISSUE No. 1

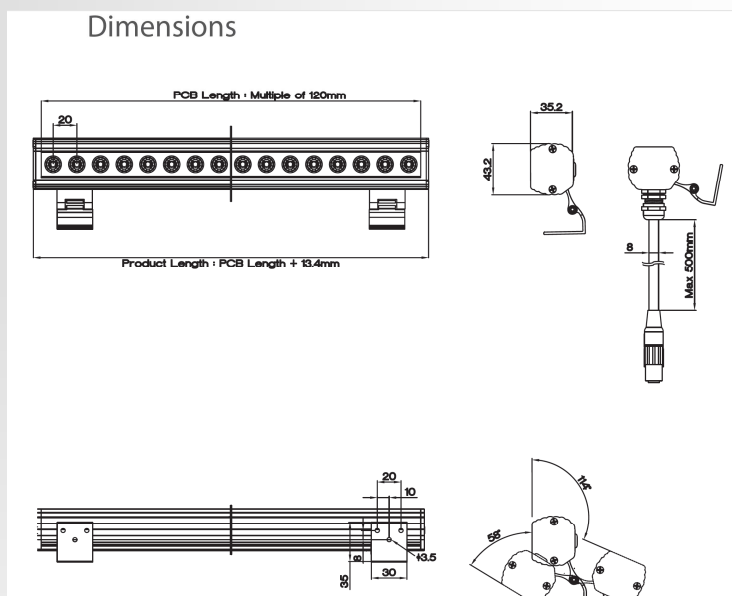




PROJECT:	WAITROSE
WAITROSE REF:	SL5
LOCATION:	EXTERNAL SIGNAGE

Slim surface mounted LED light bar for lighting external signage and building features. Lengths, output and beam angle can be tailored to suit individual applications. Multiple fittings can be end to end to light signs up to 7m wide. Protected to IP65 for exterior applications.

The efficient combination of this lens and the latest LED technology gives this luminaire an efficacy of around 100 luminaire lumens per circuit watt. LED driver is mounted remotely up to 5m away.



Fitting reference	SL5
Part number	LED BAR IP65
Body material	Extruded Aluminium
Body finish	Satin anodised aluminium
Controller	Cup reflector
Driver	24V DC constant voltage, wattage depends on length of run.
Emergency facility	N/A
Total circuit Watts	22W per metre
Connection	Pre wired plug and socket
LEDs	LG
Suspension method	Adjustable mounting bracket
Dimensions	43 x 35 x up to 7m run