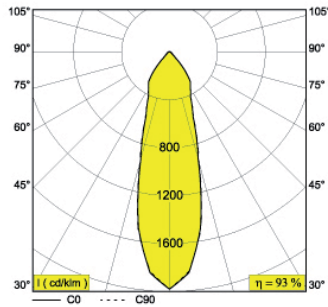
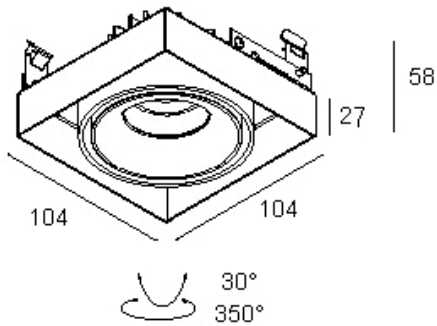


MINIGRID IN TRIMLESS 1 REO 2733
202 73 28123



i KIT x 85

◇ = W-B

ADJUSTABLE 0°- 30°/350°

INCL.1 x POWERLED WHITE 7W / CRI>80 / 2700K / 620lm

INCL.1 x REFLECTOR FL-33°

EXCL.LED POWER SUPPLY 350mA-DC

ONLY IN COMBINATION WITH MINIGRID IN 1 MOUNTING KIT (202 71 95 01

ON REQUEST : WFL-50°

ON REQUEST : 4000K

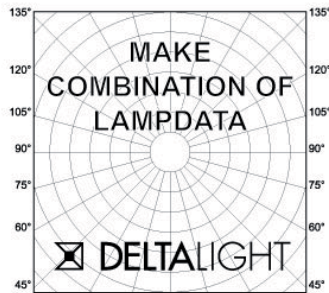
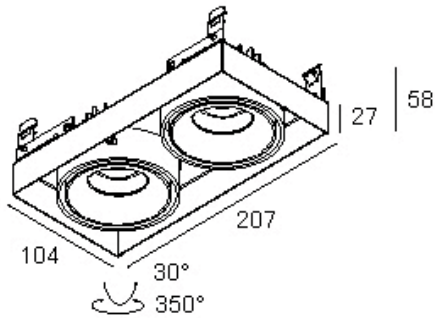
◇ **CE** 0.5 IP23/20

OPTIONS :

LED POWER SUPPLY 350mA-DC

For detailed installation instructions, please consult the manual.

MINIGRID IN TRIMLESS 2 REO 2733 202 73 28223



I KIT x 85

◇ = W-B

ADJUSTABLE 0°- 30°/350°

INCL.2 x POWERLED WHITE 7W / CRI>80 / 2700K / 620lm

INCL.2 x REFLECTOR FL-33°

EXCL.LED POWER SUPPLY 350mA-DC

ONLY IN COMBINATION WITH MINIGRID IN 2 MOUNTING KIT (202 71 95 02)

ON REQUEST : WFL-50°

ON REQUEST : 4000K

◇ **CE** 0.9 IP23/20

OPTIONS :

LED POWER SUPPLY 350mA-DC

For detailed installation instructions, please consult the manual.

2013/1888/L Condition 4d

Light Fitting Schedule - Main Ceiling Downlight

41-42 Chester Terrace - Planning Conditions

Date _____

Name _____

Client _____

Project Name _____

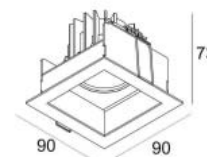
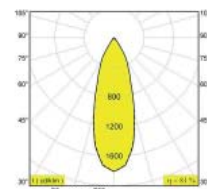
Quote# _____

Type/Quantity _____

Specification Sheet

CARREE X LED 3033-65 S1
202 206 28122

[Weblink](#)



Cutout shape/size:	75 x 75 mm
Recessed depth:	80 mm
Thickness of mounting surface:	max.35
Available colors:	ALU GREY (202 206 28122 A)
FIXED INCL.1 x POWERLED WHITE 7W / CRI>80 / 3000K / 660lm INCL.1 x REFLECTOR FL-33° INCL.PC CLEAR EXCL.LED POWER SUPPLY 350mA-DC	
LED Technics:	Light source: 660 lm // 7 W // 94 lm/W Luminaire: 535 lm // 8 W // 67 lm/W
Class:	III
Weight:	0.3 KG
Protection level:	IP65
Minimum distance:	n.a.
Options:	LED POWER SUPPLY 350mA-DC DIM

For detailed installation instructions, please consult the manual. [202_206_28122_HAND.pdf](#)

Date _____

Name _____

Client _____

Project Name _____

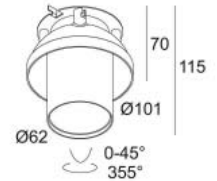
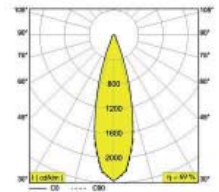
Quote# _____

Type/Quantity _____

SPY TRIMLESS 2733-9

414 31 922

[Weblink](#)



Cutout shape/size:	Ø KIT mm
Recessed depth:	80 mm
Available colors:	WHITE (414 31 922 W)
ADJUSTABLE 0° - 45° / 355°	
INCL.1 x POWERLED WHITE 7-10W / CRI>90 / 2700K / max.742lm	
INCL.1 x REFLECTOR FL-33°	
EXCL.LED POWER SUPPLY 350-500mA-DC	
LED Technics:	Light source: 742 lm // 10 W // 71 lm/W Luminaire: 511 lm // 12 W // 44 lm/W
Class:	III
Weight:	0.7 KG
Protection level:	IP20
Minimum distance:	n.a.
Options:	LED POWER SUPPLY 350 / 500mA-DC DIM
Accessories:	HONEYCOMB 50 LINEAR SPREAD LENS 50 SPREAD LENS 50 SOFTENING LENS 50 GLASS SBL 50
Requirements:	MOUNTING KIT R102 TRIMLESS O.F.A. SPY TUBE

For detailed installation instructions, please consult the manual. [414 31 822 HAND.pdf](#)

LD56T

IP68   

Low Glare Tilted Exterior In Ground LED Uplighter

Data sheet

Updated with the latest LED technology and fitted with our new optics, the low glare LD56T is now even brighter and more efficient. The length has increased by 2mm, but overall dimensions remain the same. This is a very tough, compact fitting suitable for a wide range of applications.

- LED and lens assembly recessed and tilted at 6° within a black anodised body for reduced glare
- Tilted beam angle makes it an ideal solution for wall washing and column uplighting
- No visible fixings. Options include spring fixing clips or 'O' rings and a first fix sleeve
- Can be used as an uplighter or downlighter
- Integral anti wicking barrier increases protection against moisture ingress due to incorrect IP rated cable connections
- Range of bezel finish options including stainless steel, bronze and powdercoated colours
- Available with Switch, 1-10V, DMX, Dali or Mains dimmable drivers

Specification

Applications	Recessed uplighting, Wall washing, External, Steps and Pathway					
Beam Angles	12°, 31°, 48°, 36° x 12°					
LED type	1 x Cree XPG					
Colour temperature	3000K			5000K		
Drive Current (mA)	350	500	700	350	500	700
LED power* (W)	1.2W	1.7W	2.4W	1.2W	1.7W	2.4W
CRI (typical)	93	93	93	80	80	80
Forward voltage (V)	3.0V	3.2V	3.4V	3.0V	3.2V	3.4V
Delivered lumens (L ₁₀₀)	68	93	114	110	153	190
Lumens per circuit watt**	57	55	48	91	90	79

LED lifetime (to 70% lumen maintenance)	50,000hrs at a max ambient temperature of 35°C (if specifying fitting in ambient temperatures of up to 45°C run at 500mA max, LD56T-500)
Materials	Black anodised aluminium body, Machine finish 316 stainless steel bezel (other options available)
Glass	5mm thick borosilicate
Wiring	Comes pre-wired with 2 core 100mm lead, can be specified with up to 10m at extra cost
IP rating	IP68 for up to 1 week (for permanent submersion applications use our LD242A, LD41, LD60)

*LED watts allows for 85% efficient driver

**data shown allows for an ambient temperature of 35°C

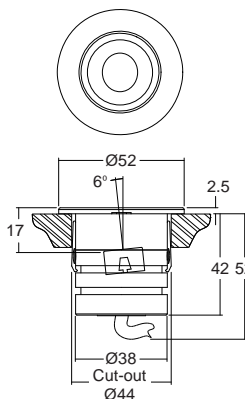


Design: Light IO | Project: Private Residence | Product: LD56T

Dimensions and Fixing Options

/SC - Spring clip fixing

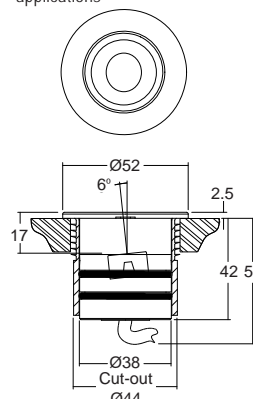
Useful for plinth or downlight applications



(Dimensions in mm)

/476 - 'O' rings and sleeve

A more robust and water tight method of fixing, for in ground applications



2013/1888/L Condition 4d

Light Fitting Schedule - Floor Uplight - B-08 only

41-42 Chester Terrace - Planning Conditions