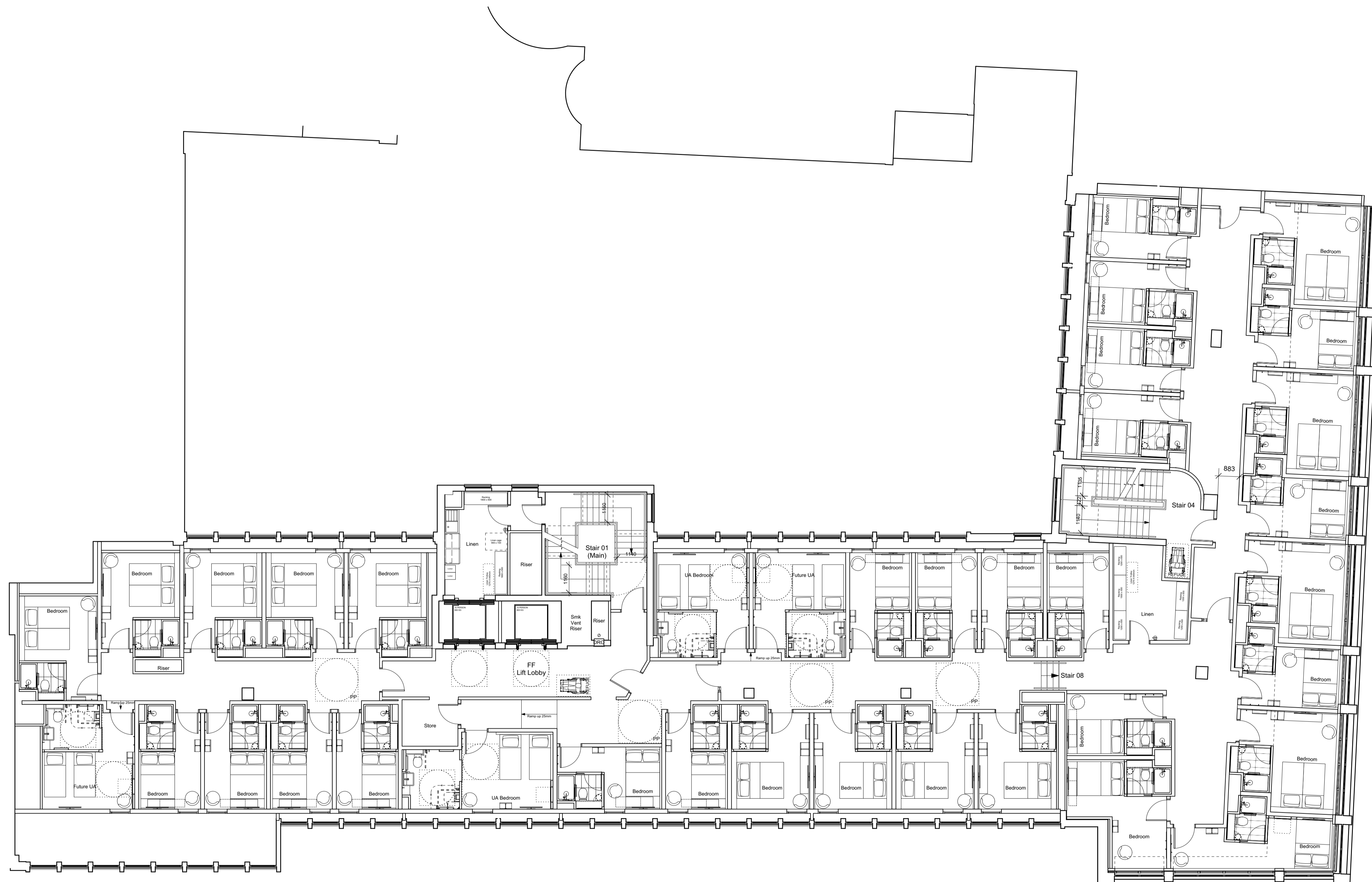


30 M

20

10

0



Rev	Date	Description	By
F	8/6/15	Shower rooms rotated. Corridor layout amended.	LB
E	10/9/14	Larger Rooms added. Room mix amended.	LB
D	21/8/13	Fenestration and bedroom layouts to Tottenham Court Road frontage further amended.	LB
C	31/7/13	Fenestration and bedroom layouts to Tottenham Court Road frontage amended. Bedroom numbers reduced to 177 total.	LB
B	18/4/13	Amended following comments from LBC Design & Conservation Officer and Public Consultation.	LB
A	22/2/13	Amended following design team comments	LB

1 Brooklands Yard
 Southover High Street
 Lewes
 East Sussex
 BN7 1HU

AXIOM
 ARCHITECTS

Tel. 01273 479269
 www.axiomarchitects.co.uk

Client

TORRINGTON PLACE LTD & WHITBREAD GROUP PLC

Project

BROOK HOUSE
 2 - 16 TORRINGTON PLACE
 LONDON

Drawing

THIRD FLOOR PLAN
AS PROPOSED

Scale	Status	Date	Drawn	Checked
1:100 @ A1	PLANNING	31/1/13	LB	

Drawing No.	Revision
3114/P/103	F

3114/P/103 F

Room Mix Schedule

Floor	Double	UA	Double / Future UA	Larger Room	Floor Total
-1	-	-	-	-	
G	-	-	-	-	
1	8	2	0	4	14
2	16	3	2	13	34
3	20	2	2	13	37
4	24	1	3	9	37
5	14	1	1	9	25
6	21	0	0	0	21
Roof	-	-	-	-	-
Total	103	9	8	48	168