



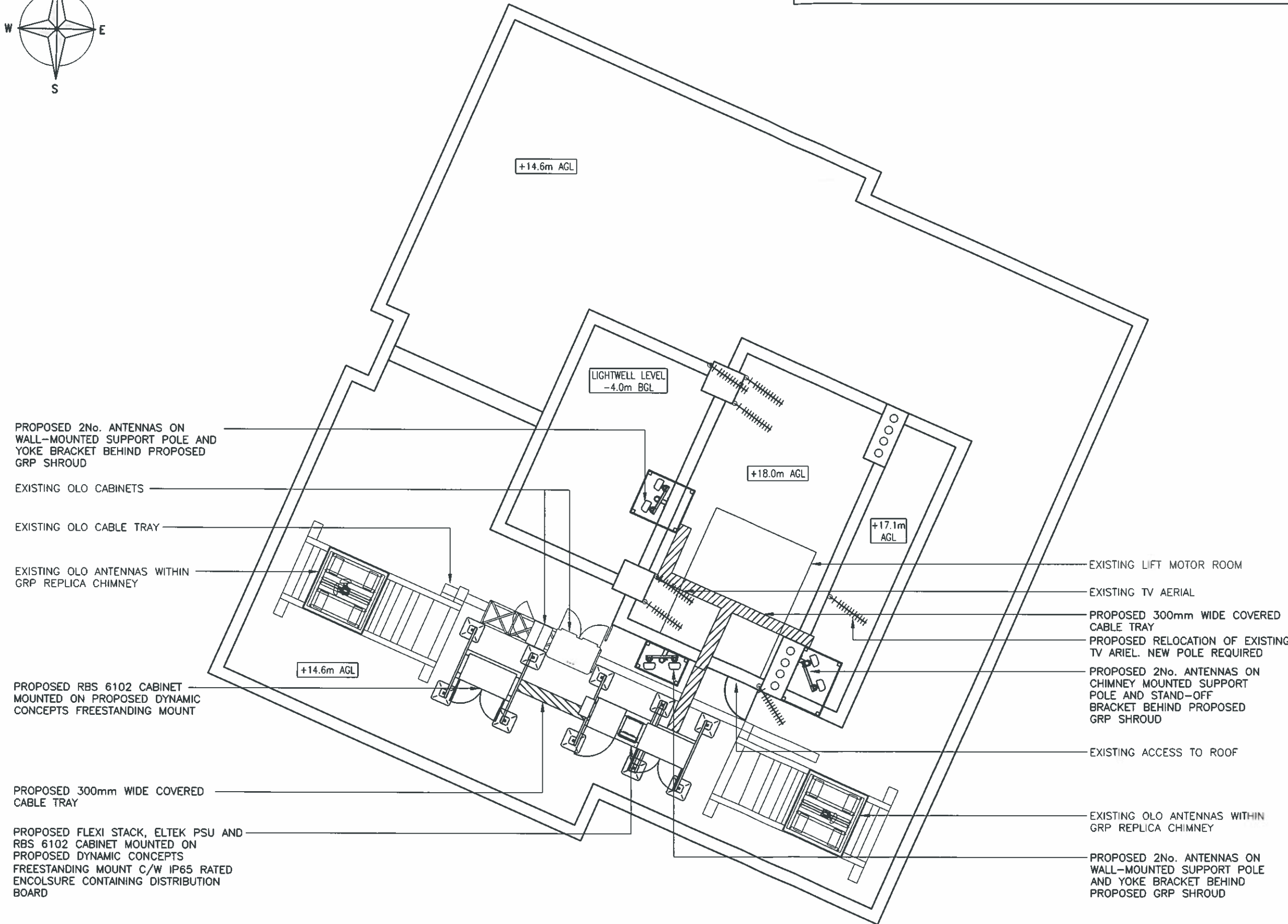
The drawings comply with TEF & Vodafone Standard ICNIRP guidelines.
 Designed in accordance with Cornerstone document: CORN/09/006

Notes:
 1 ALL DIMENSIONS ARE IN MM UNLESS NOTED OTHERWISE

N.G.R. E: 526790 N: 184715

PLEASE NOTE:

A RE-SURVEY WILL BE REQUIRED TO CONFIRM THE POSITIONING AND PROPOSED LOADING OF STRUCTURAL SUPPORT BEAMS PRIOR TO CONSTRUCTION.



PROPOSED 2No. ANTENNAS ON WALL-MOUNTED SUPPORT POLE AND YOKE BRACKET BEHIND PROPOSED GRP SHROUD

EXISTING OLO CABINETS

EXISTING OLO CABLE TRAY

EXISTING OLO ANTENNAS WITHIN GRP REPLICA CHIMNEY

PROPOSED RBS 6102 CABINET MOUNTED ON PROPOSED DYNAMIC CONCEPTS FREESTANDING MOUNT

PROPOSED 300mm WIDE COVERED CABLE TRAY

PROPOSED FLEXI STACK, ELTEK PSU AND RBS 6102 CABINET MOUNTED ON PROPOSED DYNAMIC CONCEPTS FREESTANDING MOUNT C/W IP65 RATED ENCLOSURE CONTAINING DISTRIBUTION BOARD

LIGHTWELL LEVEL
-4.0m BGL

+14.6m AGL

+18.0m AGL

+17.1m AGL

+14.6m AGL

EXISTING LIFT MOTOR ROOM

EXISTING TV AERIAL

PROPOSED 300mm WIDE COVERED CABLE TRAY

PROPOSED RELOCATION OF EXISTING TV AERIAL. NEW POLE REQUIRED

PROPOSED 2No. ANTENNAS ON CHIMNEY MOUNTED SUPPORT POLE AND STAND-OFF BRACKET BEHIND PROPOSED GRP SHROUD

EXISTING ACCESS TO ROOF

EXISTING OLO ANTENNAS WITHIN GRP REPLICA CHIMNEY

PROPOSED 2No. ANTENNAS ON WALL-MOUNTED SUPPORT POLE AND YOKE BRACKET BEHIND PROPOSED GRP SHROUD

| B | GRP Added and cabinets revised | GC | PJOB | 08.06.15 |
|-----|--------------------------------|-----|------|----------|
| A | Issued for Approval | KJI | CM | 24.04.15 |
| REV | MODIFICATION | BY | CH | DATE |

mono #

MONO CONSULTANTS LIMITED
 48 St. Vincent Street
 Glasgow
 G2 5TS
 t. 44 (0)141 566 6680
 f. 44 (0)141 566 6661
 www.monoconsultants.com


 CTIL

| | |
|----------------|-----|
| Cell Name | Opt |
| PORTLAND COURT | - |

| | | |
|------------|------------|-------------|
| Cell ID No | | |
| CTIL | Host | Sharer |
| 148389 | (VF) 36710 | (TEF) 43514 |

Site Address / Contact Details

PORTLAND COURT
 38 BELSIZE PARK
 LONDON
 NW3 4ED

Drawing Title: PROPOSED SITE PLAN

Purpose of issue: PLANNING

Drawing Number: 201

| | | | | | | | |
|----------|----------|--------|----------|-----------|----------|--------|----------|
| Scale: | As Shown | Drawn: | KJI | Date: | 24.04.15 | Issue: | B |
| Checked: | CM | Date: | 24.04.15 | Approved: | AB | Date: | 24.04.15 |

PROPOSED SITE PLAN
 (1:100)