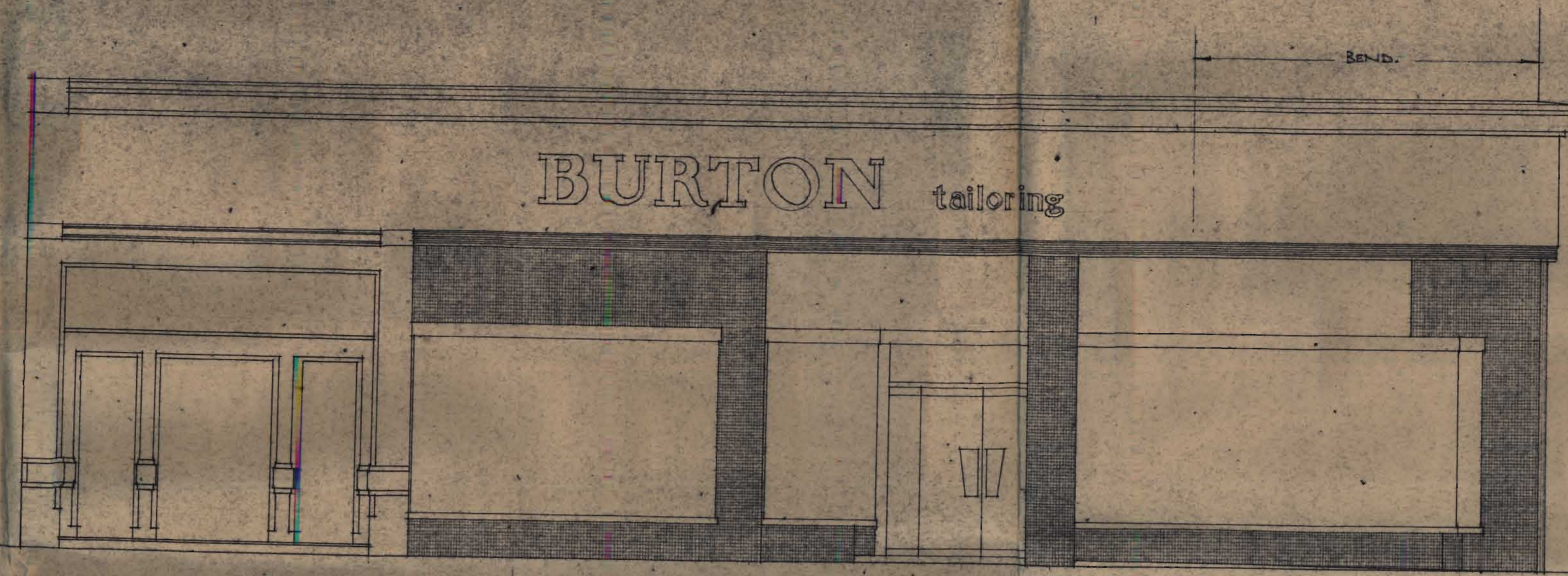


REF. TO ARCH. NO. 14295
 14295
 ARCHITECTS

• H N BARNES LTD • STOREFIT
 • LONDON • S.W.6 • REN • 1391 • 3 •
 • DWG. NO 288
 • REF N.A./K.H.B.
 • DATE 31.10.57.
 • SCALE 1/4 INCH TO 1 FOOT.

PROPOSED ALTERATION
 EXISTING SHOPFRONT
 MONTAGUE BURTON
 118, NEW OXFORD



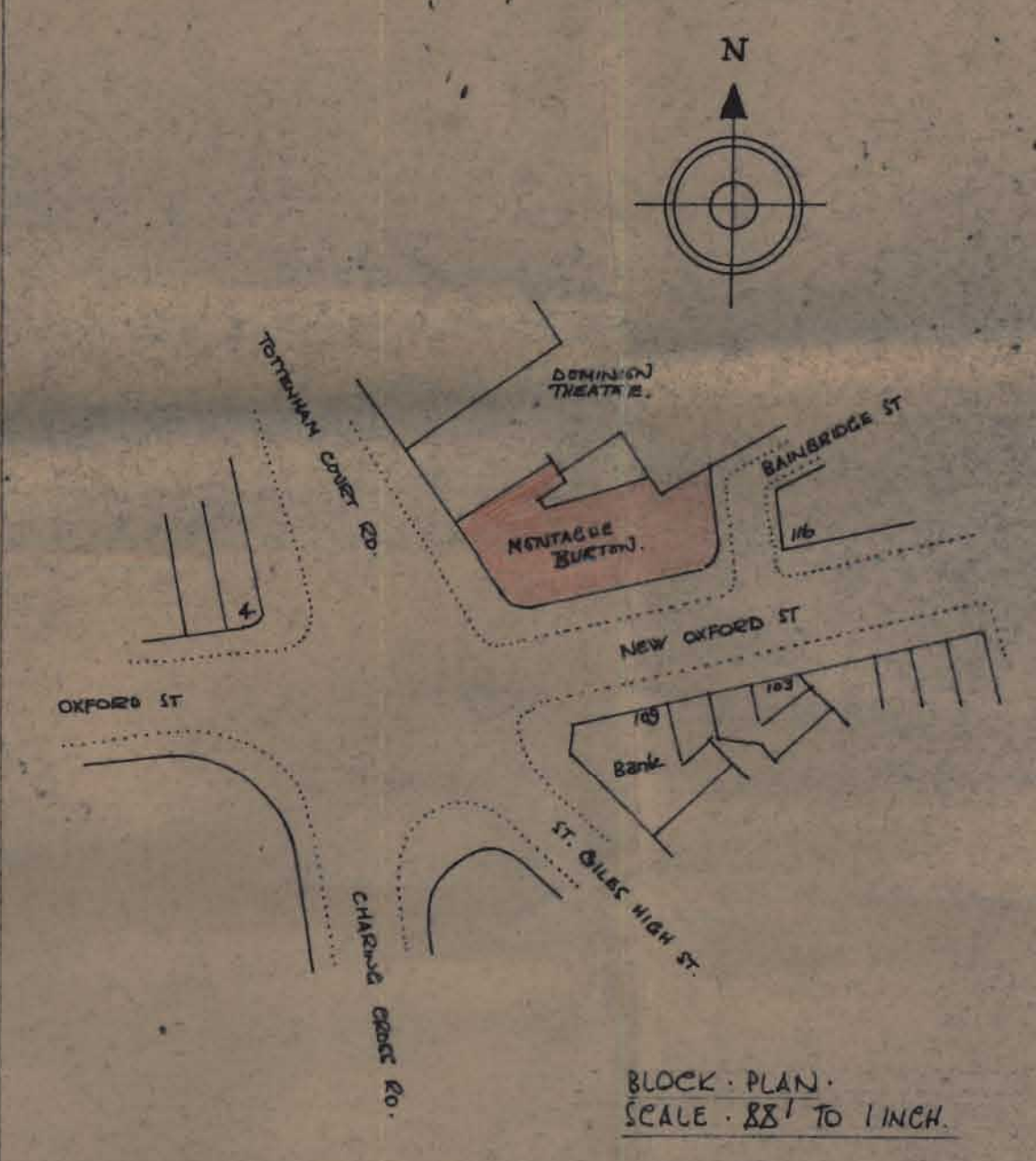
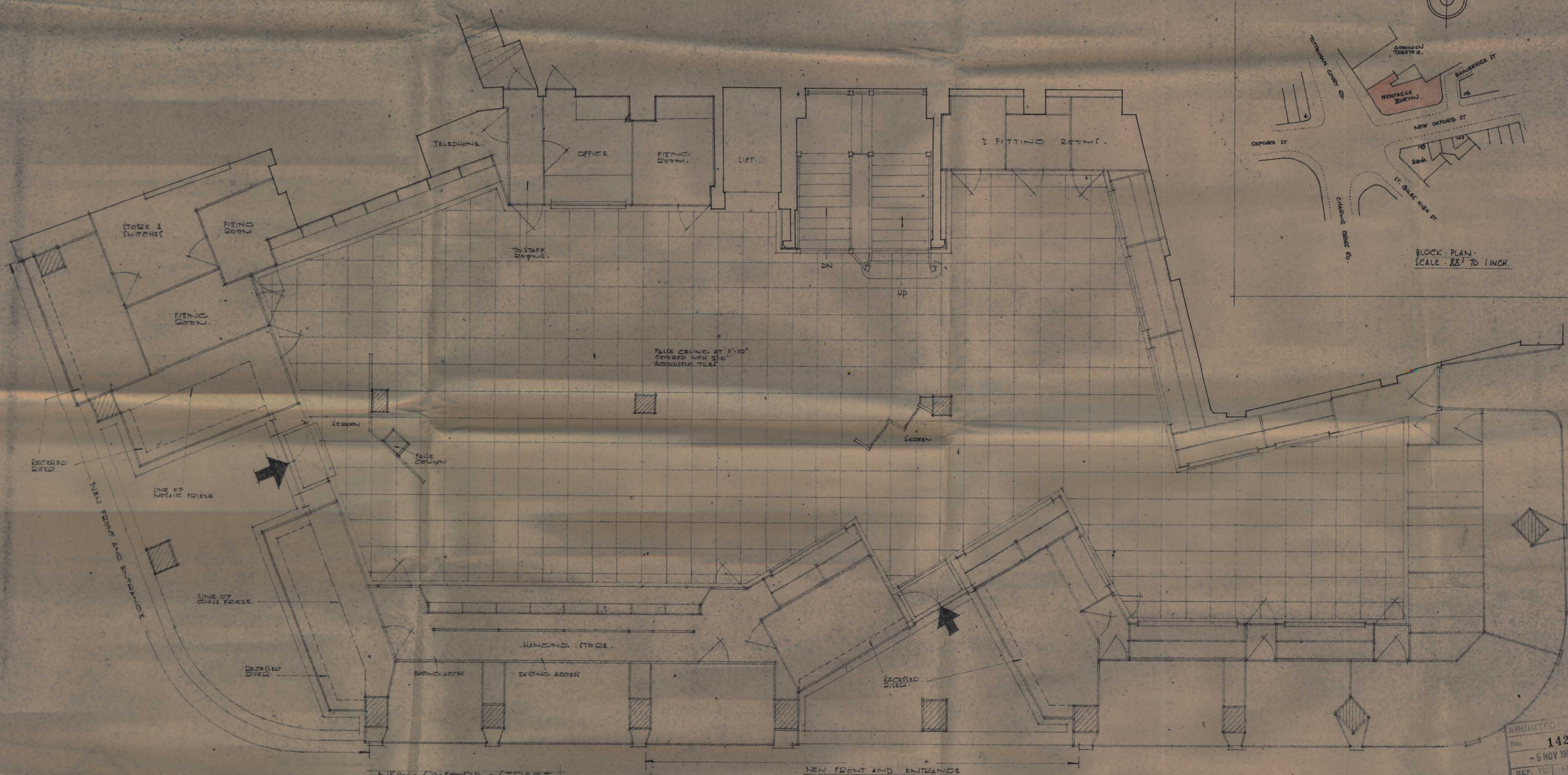
EXISTING STONE CORNICE.
 EXISTING GRANITE FACIA
 NEW NEONISED LETTERS.
 BLINDS REMOVED NEW REEDED
 ALUMINIUM FACING NO. 576
 STONE ENAMELLED.
 NEW BRONZE METAL SASHES.
 GLASS MOSAIC SURROUNDS
 AND COLUMN FACINGS.
 NEW 6/8 GLASS DOORS.
 REEDED ALUMINIUM DOORS OVER
 EXISTING SASHES, STONE ENAMELLED
 NO. 551.

ELEVATION TO TOTTENHAM COURT ROAD



ELEVATION TO NEW OXFORD STREET

ELEVATION TO BAINBRIDGE STREET



ARCHITECT
No. 14295
- 5 NOV 1957
REF. TO A.C.D.

• H N BARNES LTD • STOREFITTERS •
• LONDON • S.W.6 • REN. 1391 • 3 • LINES •
• DWG. NO 264 REVISED. PREPARED INTERIOR ALTERATION AND NEW SHOPFRONTS FOR MONTAGUE BURTON AT 118, NEW OXFORD ST. N.1.
• REF. N.A.
• DATE 23.10.57
• SCALE 1/4 INCH TO 1 FOOT

