

**A** PROPOSED FASCIA SIGN  
SCALE 1:10@A1/1:20@A3  
**SIGNAGE 1**

SIDES OF SIGN TO BE FIXED INTO SIDES OF SHOPFRONT MULLIONS. CABLING CONCEALED IN MULLIONS. SIGN TO BE BONDED BACK TO GLAZING DISCREETLY. STRUCTURAL ENGINEER/ CONTRACTOR TO ADVISE ON FIXINGS.

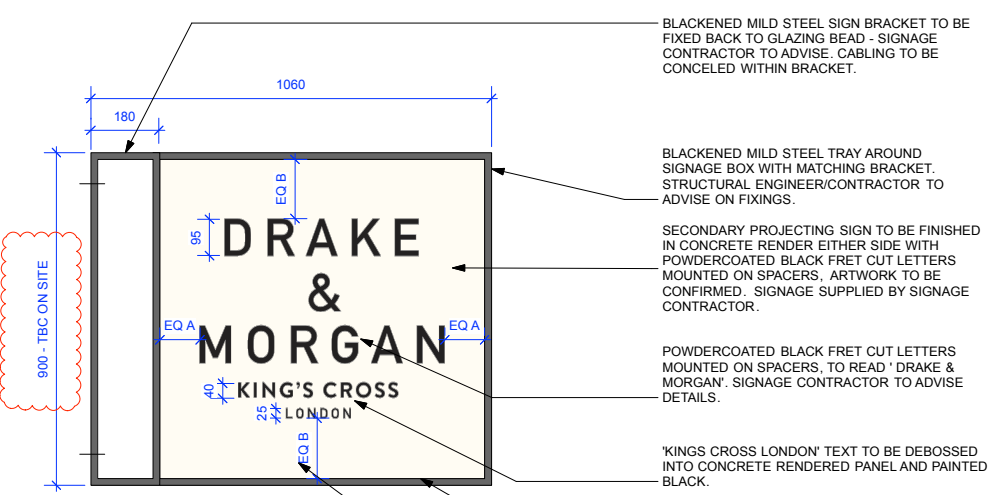
FASCIA SIGNAGE PANEL TO BE FINISHED IN CONCRETE RENDER WITH FRET CUT LETTERING TO BE POWDERCOATED BLACK LETTERS MOUNTED ON SPACERS

FRET CUT POWDERCOATED BLACK LETTERING TO READ 'DRAKE & MORGAN' AND MOUNTED ON SPACERS. SIGNAGE CONTRACTOR TO ADVISE DETAILS.

'KINGS CROSS LONDON' TEXT TO BE DEBOSSSED IN CONCRETE RENDER AND PAINTED BLACK.

BLACKENED MILD STEEL TRAY AROUND SIGNAGE BOX.

CONCEALED LED WITHIN MILD STEEL FRAME TO WASH ACROSS FACE OF SIGN



**B** PROPOSED TYPICAL PROJECTING SIGN  
SCALE 1:10@A1/1:20@A3  
**SIGNAGE 2&3**

BLACKENED MILD STEEL SIGN BRACKET TO BE FIXED BACK TO GLAZING BEAD - SIGNAGE CONTRACTOR TO ADVISE. CABLING TO BE CONCEALED WITHIN BRACKET.

BLACKENED MILD STEEL TRAY AROUND SIGNAGE BOX WITH MATCHING BRACKET. STRUCTURAL ENGINEER/CONTRACTOR TO ADVISE ON FIXINGS.

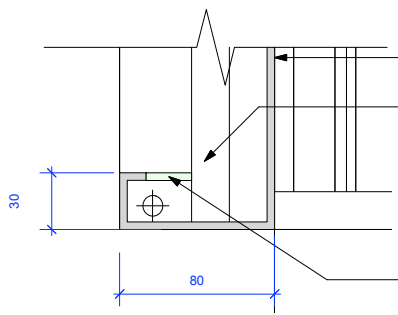
SECONDARY PROJECTING SIGN TO BE FINISHED IN CONCRETE RENDER EITHER SIDE WITH POWDERCOATED BLACK FRET CUT LETTERS MOUNTED ON SPACERS. ARTWORK TO BE CONFIRMED. SIGNAGE SUPPLIED BY SIGNAGE CONTRACTOR.

POWDERCOATED BLACK FRET CUT LETTERS MOUNTED ON SPACERS. TO READ 'DRAKE & MORGAN'. SIGNAGE CONTRACTOR TO ADVISE DETAILS.

'KINGS CROSS LONDON' TEXT TO BE DEBOSSSED INTO CONCRETE RENDERED PANEL AND PAINTED BLACK.

CONCEALED LED WITHIN MILD STEEL FRAME TO WASH ACROSS FACE OF SIGN

SIGN TO BE DOUBLE SIDED WITH TEXT EITHER SIDE



**C** DETAIL 1  
SCALE 1:2@A1/1:4@A3

BLACKENED MILD STEEL TRAY AROUND SIGNAGE BOX.

FASCIA SIGNAGE PANEL TO BE FINISHED IN CONCRETE RENDER AND FIXED BACK TO MARINE PLY SUBSTRATE

OPAL ACRYLIC WITH DIFFUSER TO CONCEAL LED LIGHTING WITHIN MILD STEEL FRAME TO WASH ACROSS FACE OF SIGN

SIGN BRACKET TO BE FIXED BACK TO GLAZING BEAD/MULLION. CABLING TO BE CONCEALED IN MILD STEEL BRACKET. STRUCTURAL ENGINEER/ CONTRACTOR TO ADVISE ON FIXINGS.

SECONDARY PROJECTING SIGN TO BE FINISHED IN CONCRETE RENDER EITHER SIDE WITH POWDERCOATED BLACK FRET CUT LETTERS MOUNTED ON SPACERS. ARTWORK TO BE CONFIRMED. SIGNAGE SUPPLIED BY SIGNAGE CONTRACTOR.

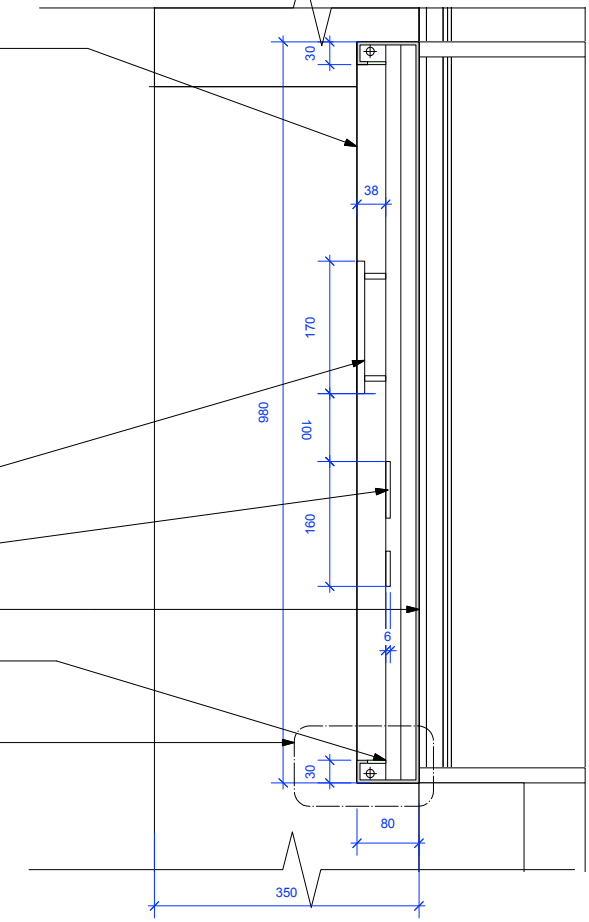
POWDERCOATED BLACK FRET CUT LETTERS MOUNTED ON SPACERS. TO READ 'DRAKE & MORGAN'. SIGNAGE CONTRACTOR TO ADVISE DETAILS.

SIGN TO BE DOUBLE SIDED WITH TEXT EITHER SIDE, AND CONCRETE RENDER FINISH TO BOTH SIDES

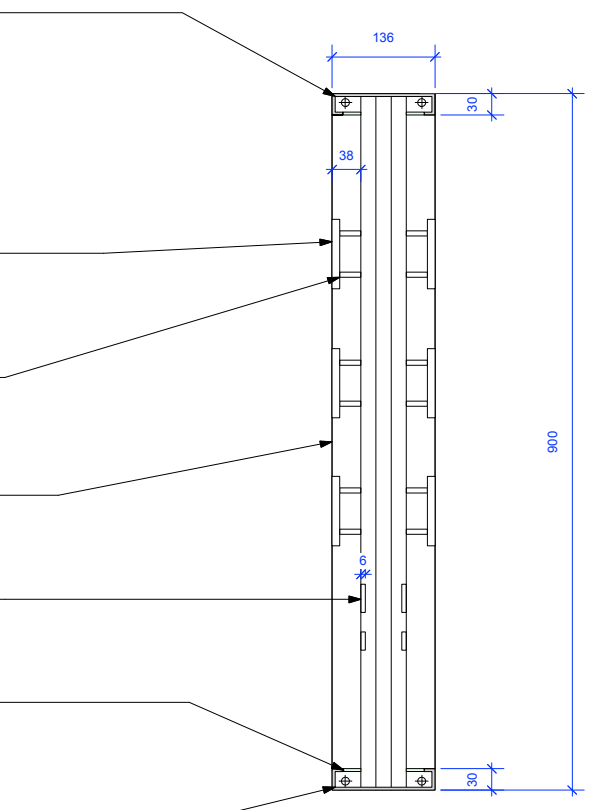
'KINGS CROSS LONDON' TEXT TO BE DEBOSSSED INTO CONCRETE RENDERED PANEL AND PAINTED BLACK.

OPAL ACRYLIC WITH DIFFUSER TO CONCEAL LED LIGHTING WITHIN MILD STEEL FRAME TO WASH ACROSS FACE OF SIGN

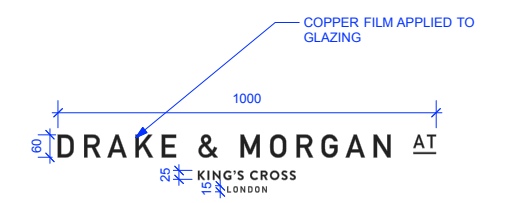
BLACKENED MILD STEEL TRAY AROUND SIGNAGE BOX WITH MATCHING BRACKET. STRUCTURAL ENGINEER/CONTRACTOR TO ADVISE ON FIXINGS.



**D** FASCIA SIGN SECTION  
SCALE 1:5@A1/1:10@A3  
**SIGNAGE 1**



**E** PROJECTING SIGN SECTION  
SCALE 1:5@A1/1:10@A3  
**SIGNAGE 3**



**F** VINYL SIGN  
SCALE 1:10@A1/1:20@A3  
**SIGNAGE 4**

**Notes**  
This drawing should not be scaled. The contractor is to verify all dimensions and conditions on site. This drawing is the property of Fusion and they reserve the copyright. It is issued on the understanding that it will not be copied, reproduced or disclosed in whole or in part to any unauthorised party without written permission from Fusion

A	17.07.15	HANGING SIGN CHANGED TO PROJECTING
B	21.07.15	PROJECTING SIGN SIZE

<b>FUSION</b> design and architecture	
4 Risborough Street London SE1 0HE Tel: 020 7928 9982 Fax: 020 7928 9994 email: mail@fusiondna.co.uk	
Job Name:	<b>DRAKE &amp; MORGAN KINGS CROSS</b>
Site Address:	<b>KINGS CROSS UNIT 3 ST PANCRAS SQUARE</b>
Org Name:	<b>SIGNAGE DETAILS</b>
Status:	<b>CONSTRUCTION</b>

Drawn by:	HP	Checked by:	SS
Scale:	VARIED	Date:	SEPTEMBER 2014
Job/Dig No:	<b>94.21/403B</b>		