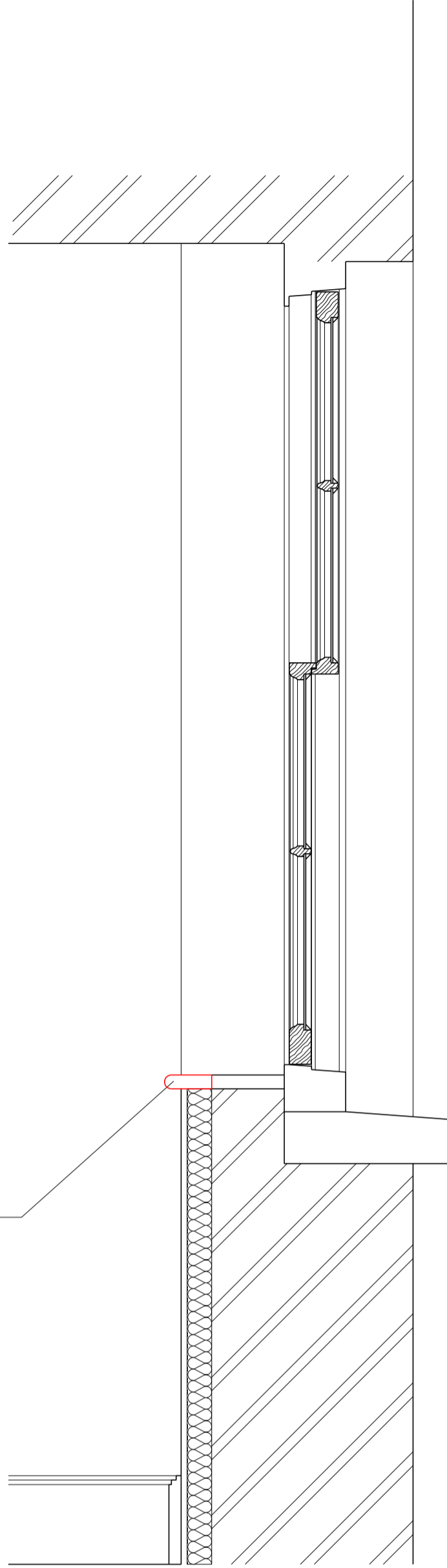
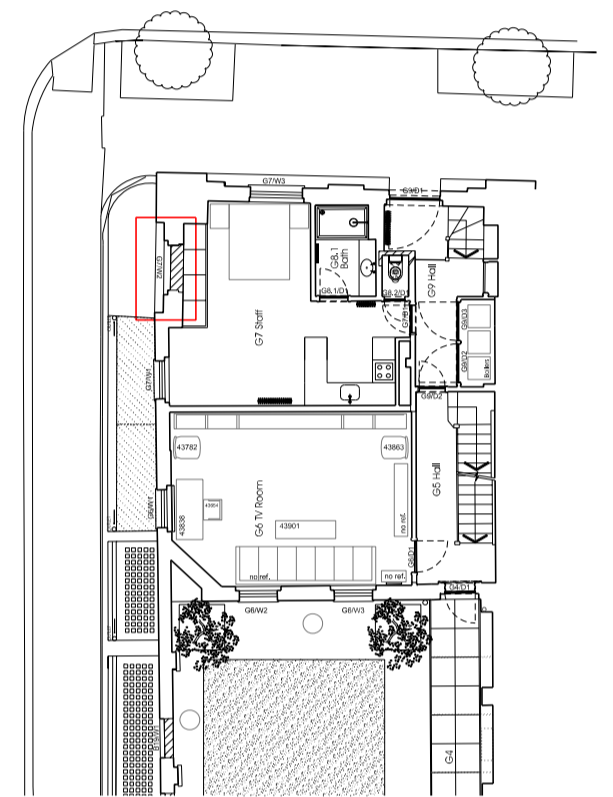


Window sill trimmed back to accommodate new insulated sheeting, and to create a smooth internal wall.



BLOOMSBURY STREET



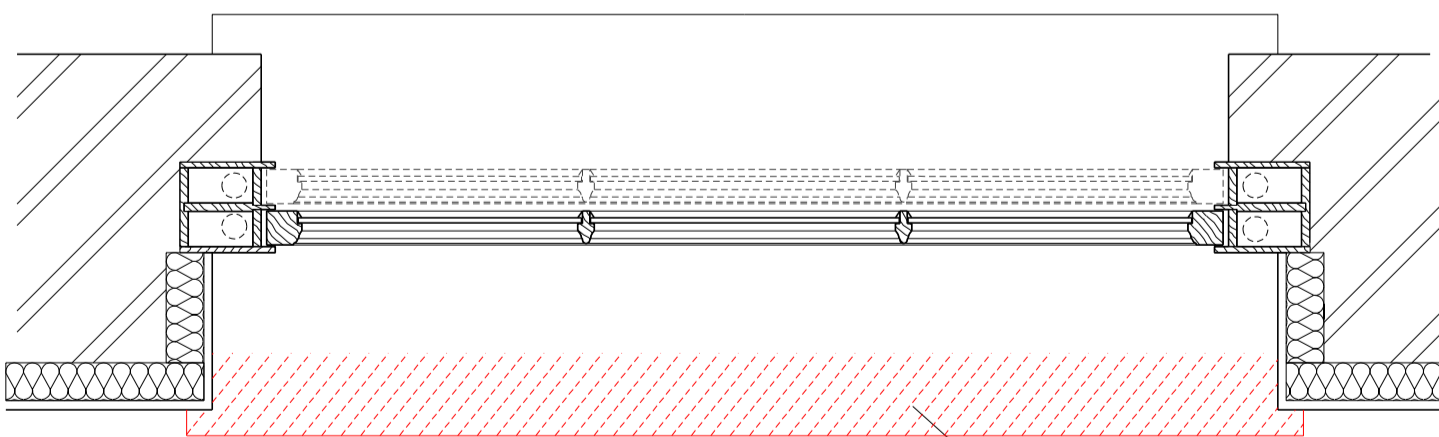
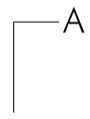
G7/W2 NOTES

- Window reveal is flush with ceiling.

1 East Elevation of G7/W2 as existing.  
SCALE 1:10

2 Section AA cut through G7/W2 as existing.  
SCALE 1:10

BLOOMSBURY STREET



Window sill trimmed back to accommodate new insulated sheeting, and to create a smooth internal wall.

Remove

3 Plan of G7/W2 as existing.  
SCALE 1:10

53 BEDFORD SQUARE

DATE	REVISION	COMMENT	AUTHOR	APPROVED
13/07/15	-	PLANNING APPLICATION - G7/W2 RETAINED BUT BLOCKED INTERNALLY	DC	PI

53 BEDFORD SQUARE

TITLE  
G7/W2\_EXISTING  
Blocking up of window internally

DWG NO SCALE 1:10@A2  
53BS M SK 152 DATE JUL 2015

H:\53 Bedford Square\Sketches\71\_53BS SK 153 - G7 W2 blocking up\53BS SK 153 - G7 W2 blocking up.dwg  
PETER INSKIP + PETER JENKINS ARCHITECTS LTD  
19 - 23 WHITE LION STREET LONDON N1 9PD  
TELEPHONE 020 78334002 FAX 020 72785343