



1 NORTH EAST ELEVATION  
- scale 1:100



2 NORTH WEST ELEVATION  
- scale 1:100



3 NORTH WEST ELEVATION  
- scale 1:100

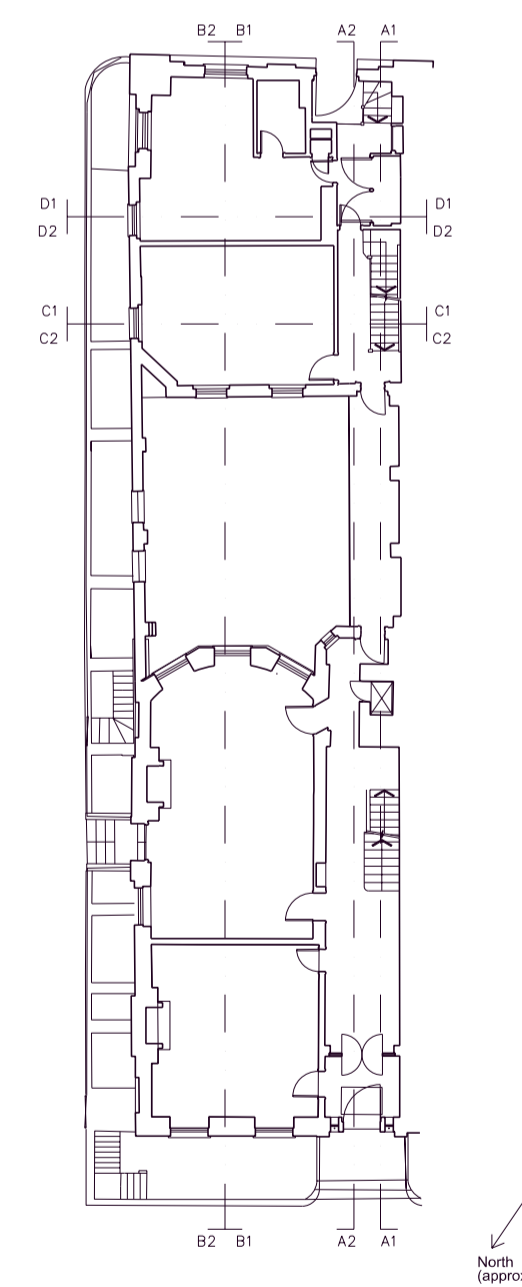


4 SOUTH EAST ELEVATION  
- scale 1:100

KEY:

- Remove
- Reincorporate

01. Take down timber stud partition
02. Remove existing sash window and frame
03. Remove boxing / casing / ducting
04. Strip out modern ceiling
05. Dismantle door and frame ready for re-use
06. Remove/relocate radiators
07. Strip out all bathroom finishes and fittings, including floor finishes, wall and ceiling plaster; adapt services
08. Strip out cupboards
09. Strip out rooflight
10. Alter partition to suit proposed door opening
11. Strip out kitchen fittings
12. Remove and re-hang door leaf
13. Strip out modern timber floor
14. Strip out door and frame
15. Form opening for new roof access
16. Roof edge altered to suit ventilator
17. Remove roof extracts
18. Remove existing glass balustrade and timber handrail
19. Remove spa and staging
20. Remove wall under window to form doorway



DATE	REVISION	COMMENT	AUTHOR	AUTHORISED
08.07.15	A	PLANNING APPLICATION, WINDOW BLINDS MADE INTO DOORWAY, WINDOW GLASS RE-TIMBERED	SB	PI
27.02.15	-	PLANNING APPLICATION	FC	PI

**53 BEDFORD SQUARE**  
TITLE  
GA ELEVATIONS AS EXISTING

DWG NO 53 BS M GA 004 A SCALE 1:100@A1  
DATE FEB 2015  
H:\53 Bedford Square\General Arrangement\Schemata\GA\_Elevations\GA\_Elevations.dwg  
PETER INSKIP + PETER JENKINS ARCHITECTS LTD  
19 - 23 WHITE LION STREET LONDON N1 9PD  
TELEPHONE 020 78334002 FAX 020 72785343

