



1 SECTION B2 B2
- scale 1:100

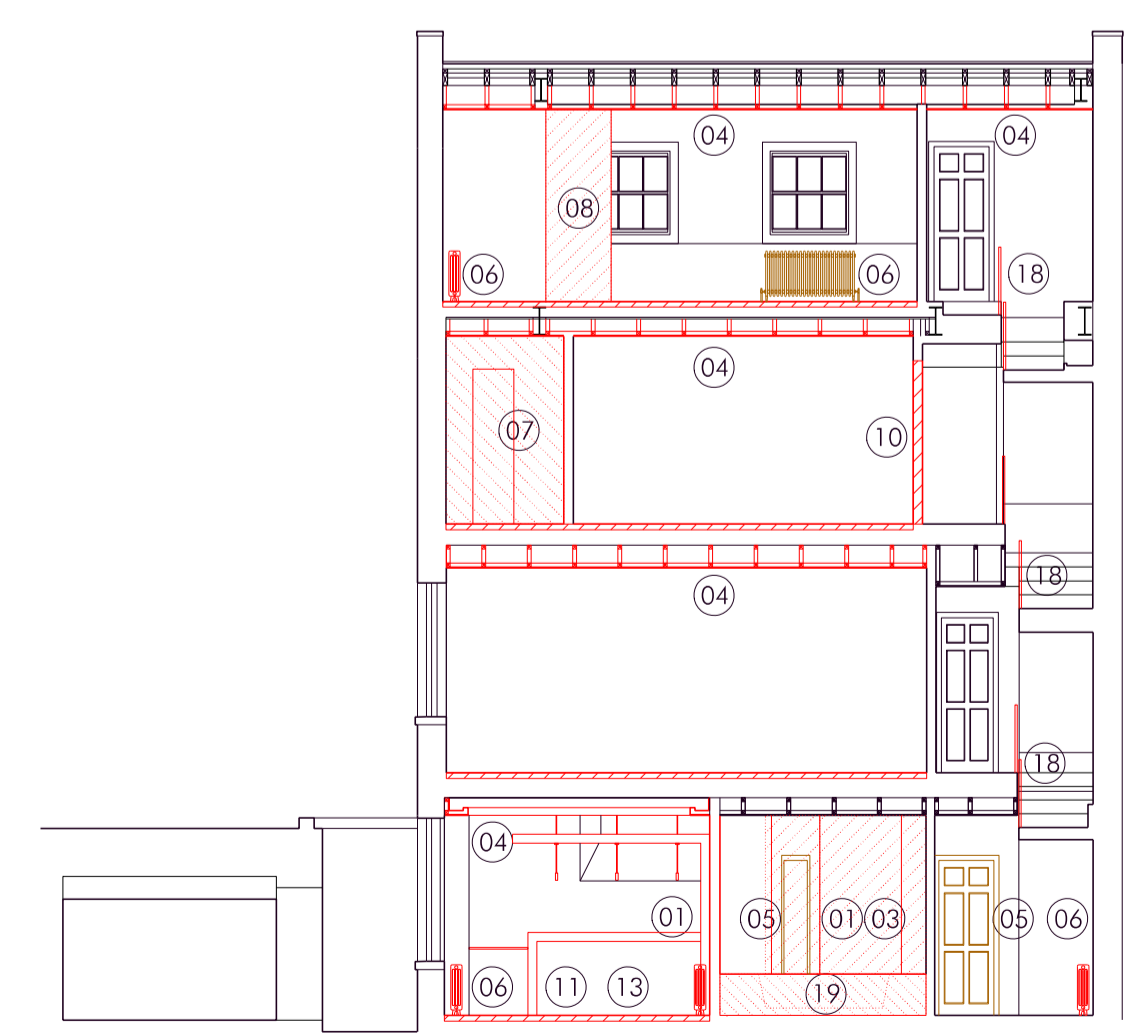


2 SECTION C1 C1
- scale 1:100

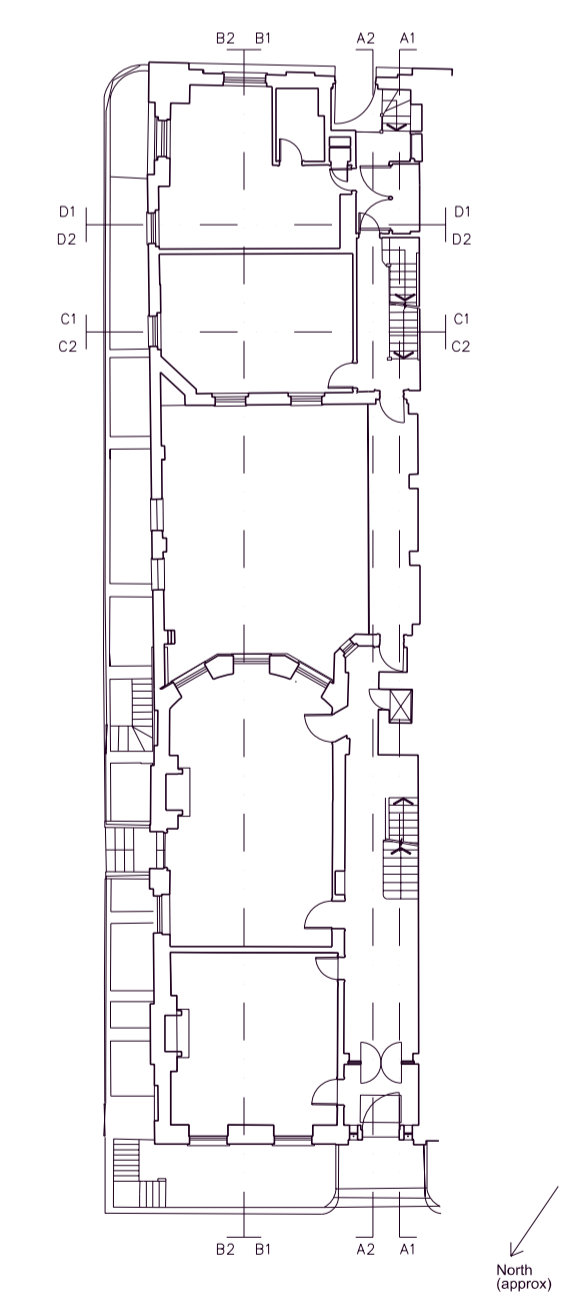
- KEY:
- Remove
 - Reincorporate
01. Take down timber stud partition
 02. Remove existing sash window and frame
 03. Remove boxing / casing / ducting
 04. Strip out modern ceiling
 05. Dismantle door and frame ready for re-use
 06. Remove/relocate radiators
 07. Strip out all bathroom finishes and fittings, including floor finishes, wall and ceiling plaster; adapt services
 08. Strip out cupboards
 09. Strip out rooflight
 10. Alter partition to suit proposed door opening
 11. Strip out kitchen fittings
 12. Remove and re-hang door leaf
 13. Strip out modern timber floor
 14. Strip out door and frame
 15. Form opening for new roof access
 16. Roof edge altered to suit ventilator
 17. Remove roof extracts
 18. Remove existing glass balustrade and timber handrail
 19. Remove spa and staging
 20. Remove wall under window to form doorway



3 SECTION B1 B1
- scale 1:100



4 SECTION C2 C2
- scale 1:100



DATE	REVISION	COMMENT	AUTHOR	AUTHORIZED
08.07.15	A	PLANNING APPLICATION - SPA REMOVED, MEN'S BATHROOM PARTITION TO SPA REMOVED, WINDOW EXTRACTS RELOCATED TO DOORWAY	SB	PH
27.02.15	-	PLANNING APPLICATION	FC	PH

53 BEDFORD SQUARE
TITLE
GA SECTIONS AS EXISTING

DWG NO 53 BS M GA 003 A SCALE 1:100@A1
DATE FEB 2015

H:\53 Bedford Square\General Arrangement\Schemata\GA_Moss Planning Application Rev A.rvt
PETER INSKIP + PETER JENKINS ARCHITECTS LTD
19 - 23 WHITE LION STREET LONDON N1 9PD
TELEPHONE 020 78334002 FAX 020 72785343