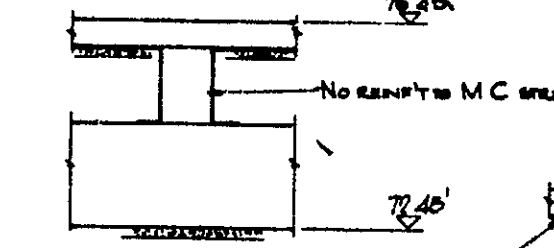


SECTION K-K



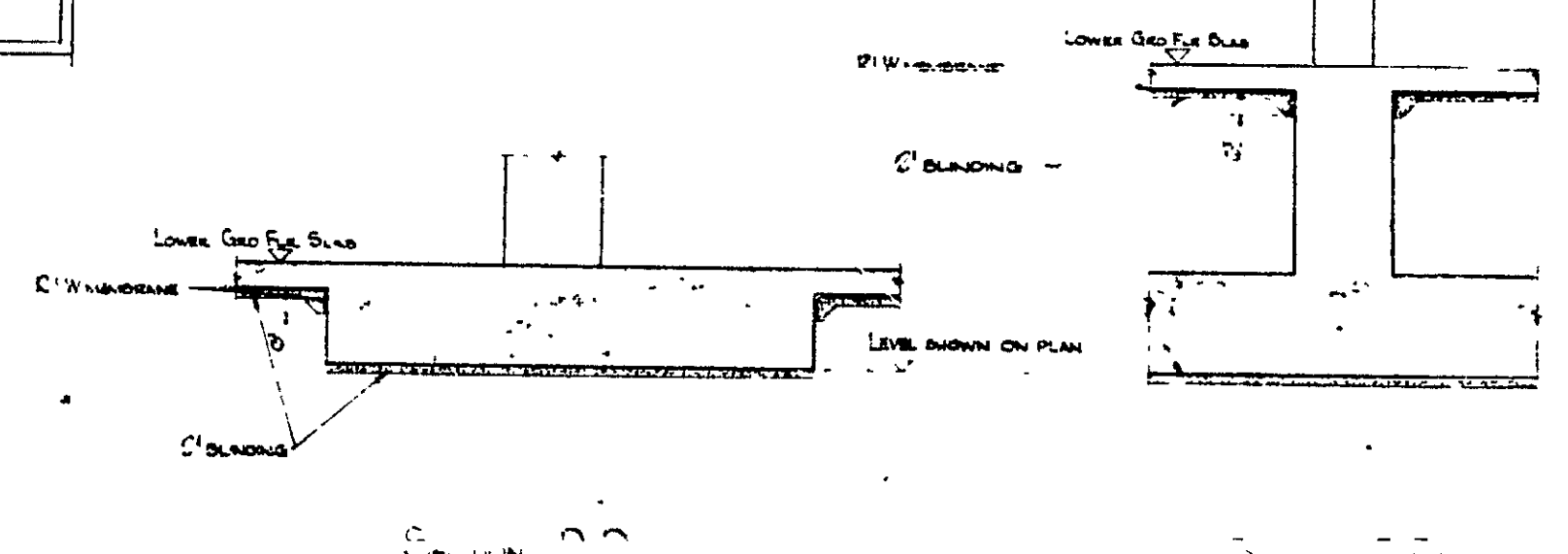
SECTION L-L

- 1. ALL WORK TO BE DONE IN ACCORDANCE WITH THE SPECIFICATION AND DRAWINGS AND ANY AMENDMENTS THEREON.
- 2. CLASSIFICATION OF WORK SHALL BE AS FOLLOWS:
  - CLASS A - ALL WORK
- 3. FOR BACKGROUNDS SEE SPECIFICATION.
- 4. FOR DETAILS OF R.C. WALLS SEE DRAWINGS NOS. 230WS 13 & 14.
- 5. FOR DETAILS OF NORTH-SOUTH WALLS SEE DRAWINGS NOS. 230WS 10 & 11.
- 6. FOR DETAILS OF COLUMN STARTERS AND SPREADERS SEE DRAWINGS NOS. 230WS 15 & 16.
- 7. COVER TO ALL REINFORCEMENT TO BE 1 1/2".
- 8. FOR REINFORCEMENT SEE DRAWINGS SCHEDULES NOS. 129 & 130.

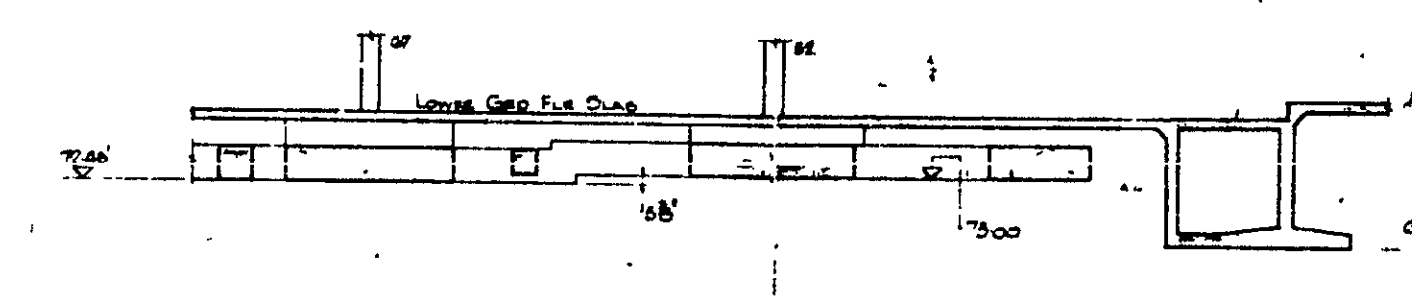
SECTION M-M

SECTION N-N

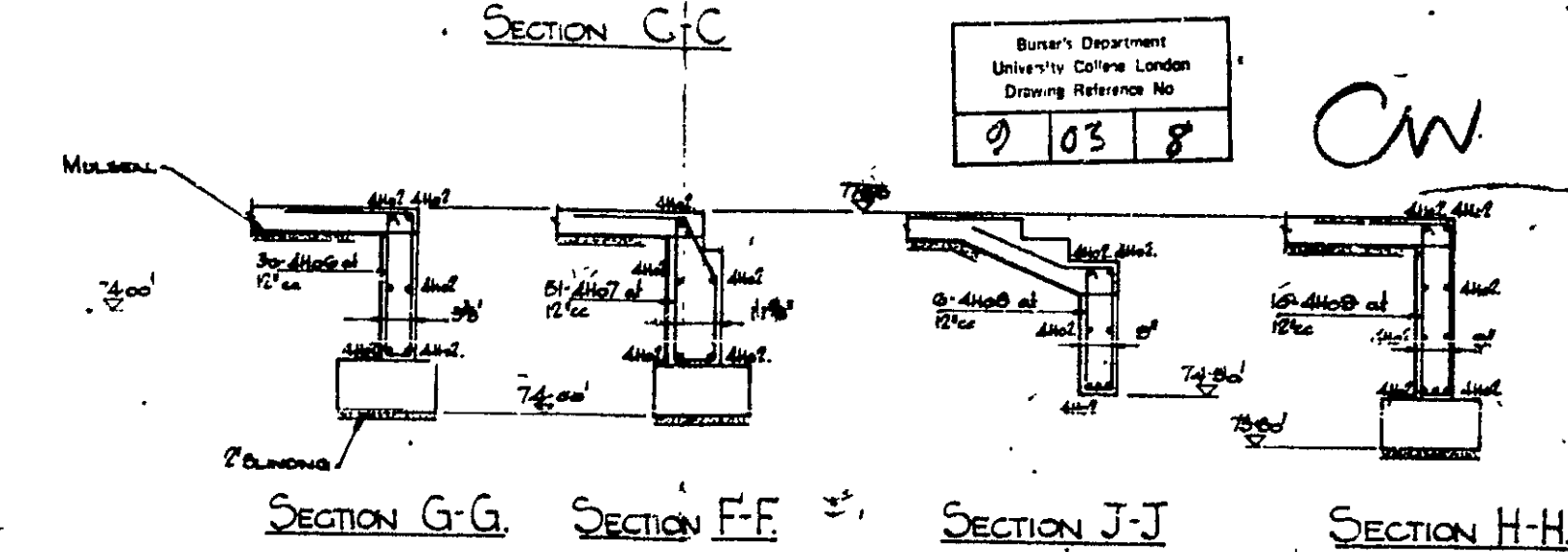
SECTION P-P



TYPICAL SECTIONS THROUGH BAYES  
(SCALE 1/4" = 1'-0")



SECTION G-G



SECTION F-F

SECTION J-J

SECTION H-H

Schedule of Amendment Number	Date	All amendments to working drawings will be made by means of Schedule of Amendment
Detail: <b>CENTRAL COLLEGIATE BUILDING 23 AUG 1968</b>		
Client: <b>UNIVERSITY COLLEGE OF LONDON</b>		
Designed By: <b>W. J. H.</b>		Drawn: <b>W. J. H.</b>
Drawn By: <b>W. J. H.</b>		Check: <b>W. J. H.</b>
Traced By: <b>W. J. H.</b>		Scale: <b>1/8" = 1'-0"</b>
Checked By: <b>W. J. H.</b>		Approved By: <b>W. J. H.</b>
Dwg Issued On: <b>23 AUG 1968</b>		Drawing No: <b>039/115</b>