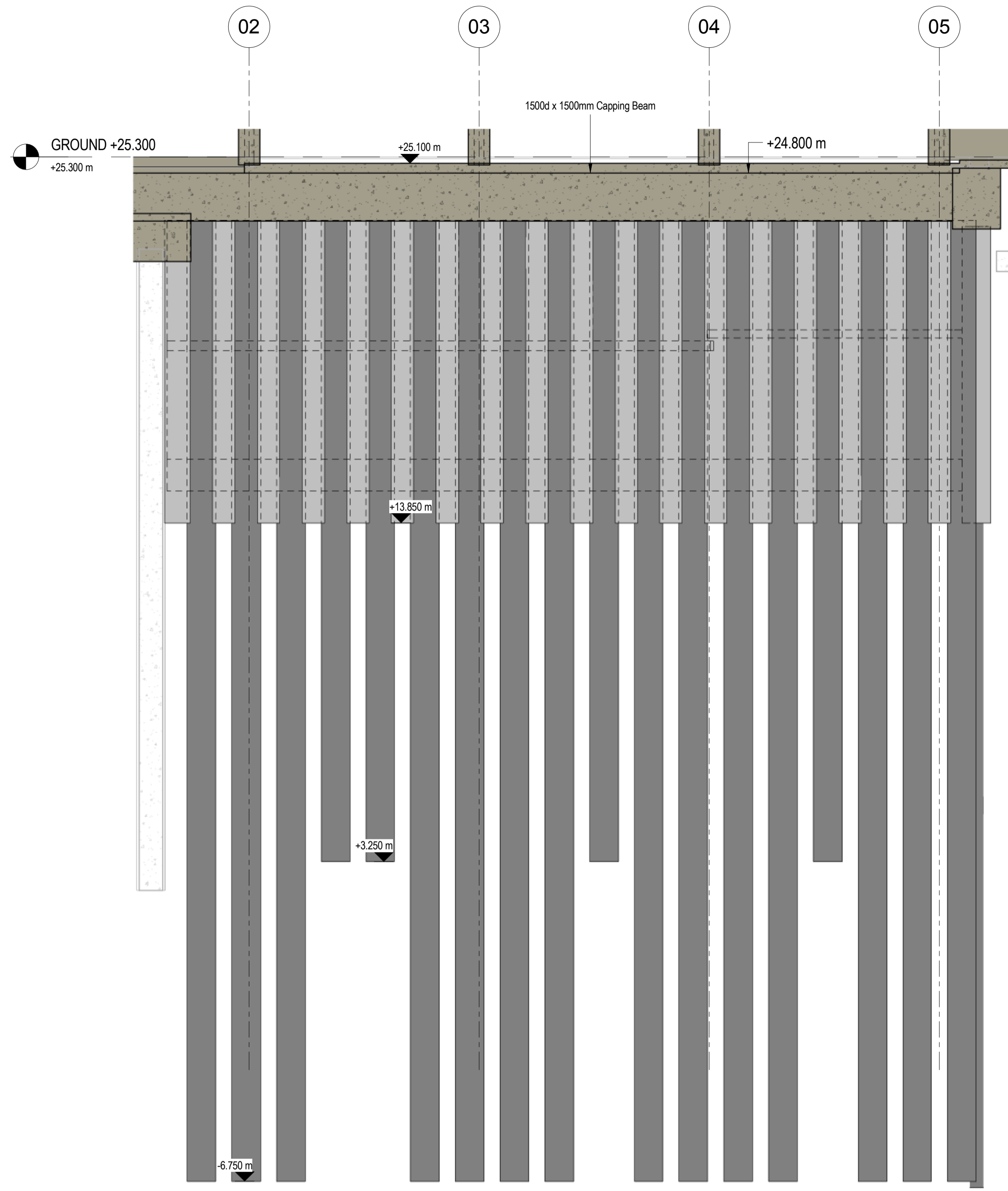


Secant Pile Wall Elevation C

1 : 100



Secant Pile Wall Elevation D

1 : 100

NOTES:

1. This drawing is to be read in conjunction with all relevant Architects and Engineers drawings, details and specifications.
2. Do not scale this drawing. All details and dimensions are to be checked by the contractor and fabricator onsite prior to commencement of construction/fabrication. Any discrepancies are to be reported to the Engineer. Any existing dimensions noted on this drawing are to be checked by the contractor prior to commencement of works.
3. Any ambiguities, omissions and errors on the drawings, shall be brought to the Engineers attention immediately.
4. All dimensions are in millimetres unless noted otherwise.
5. All works to be carried out in accordance with the relevant British Standards, Codes of Practice and Building Practice.
6. Contractor to ascertain the location of all services on site prior to starting any excavations works and report and potential problems immediately.

S1	Stage 3 Issue	14/05/15	AL	SS
Rev:	Description:	Date:	By:	Chkd:

curtins consulting
 Curtins Consulting Ltd
 40 Compton Street, London, EC1V 0BD
 t: 020 7324 2240 f: 020 7324 2241
 e: london@curtins.com www.curtins.com

Structures • Civils • Environmental • Infrastructure • Urban Regeneration • Health & Safety • Dispute Resolution
 Birmingham • Bristol • Cardiff • Douglas • Edinburgh • Kandal • Leeds • Liverpool • London • Manchester • Nottingham

Status: **STAGE 3**

Project: **UCL - NEW STUDENT CENTRE**

Drig Title: **SECANT PILE WALL ELEVATIONS SHEET 2 OF 2**

Scale:	Size:	First Issue:	Drawn:	Checked:
1 : 100	A1	14/05/2015	AL	SS

Drig No:	Rev:
LO1254 / S-112	S1