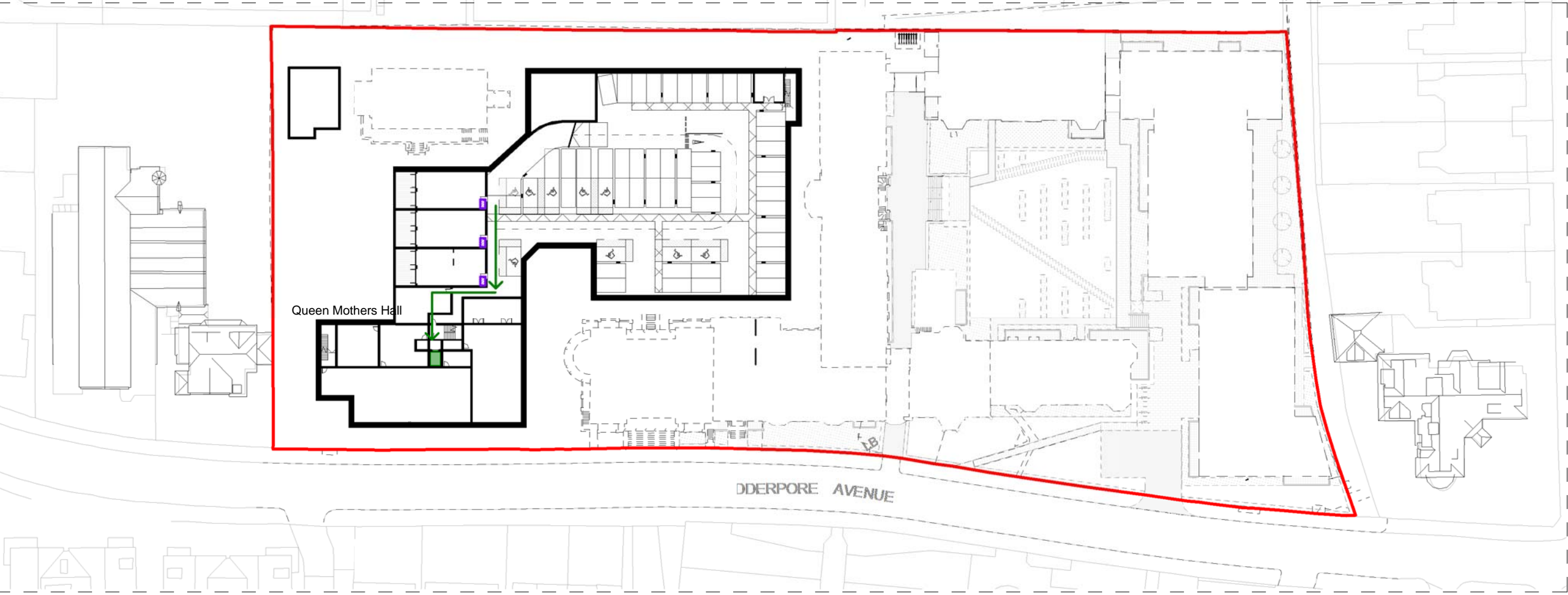




WASTE STORAGE LEGEND

- ▲ Residential entrances
- Routes to drop-off points
- Drop-off points
- Waste stores
- Kerbside collection points
- Management routes
- Management service lift
- Collection Service Routes

GENERAL NOTES
 All drawings are based on survey information provided by others. Scott Brownrigg cannot be held responsible for the accuracy of this information, the legal boundary or site demise. This should be checked on site and against legal records.
 RWP locations are notional and may be subject to change as detail design progresses.



1 Diagram Waste Level -2
 1 : 750

Rev.	Description	Drawn	Date	Checked
5	Issued for planning submission	FJM	2015-07-06	SW
4	Issued for planning submission	FJM	2015-07-03	SW
3	Issued for planning submission	FJM	2015-07-01	SW
2	Minor revisions to site diagrams	FJM	2015-06-29	SW
1	First issue of draft pre-planning submission.	FJM	2015-06-19	SW

SCOTT BROWNRIGG

St Catherine's Court
 46-48 Portsmouth Road
 Guildford GU2 4DU
 T +44 (0)1483 568686
 F +44 (0)1483 575830
 W scottbrownrigg.com

Client
Mount Anvil

Job Title
Kidderpore Avenue

Drawing Title
Diagrams - Waste Storage

Scale
 As indicated @ A3

Project Number	Drawing Number	Rev
157780	PL-ST-521	5

Status
FOR PLANNING

