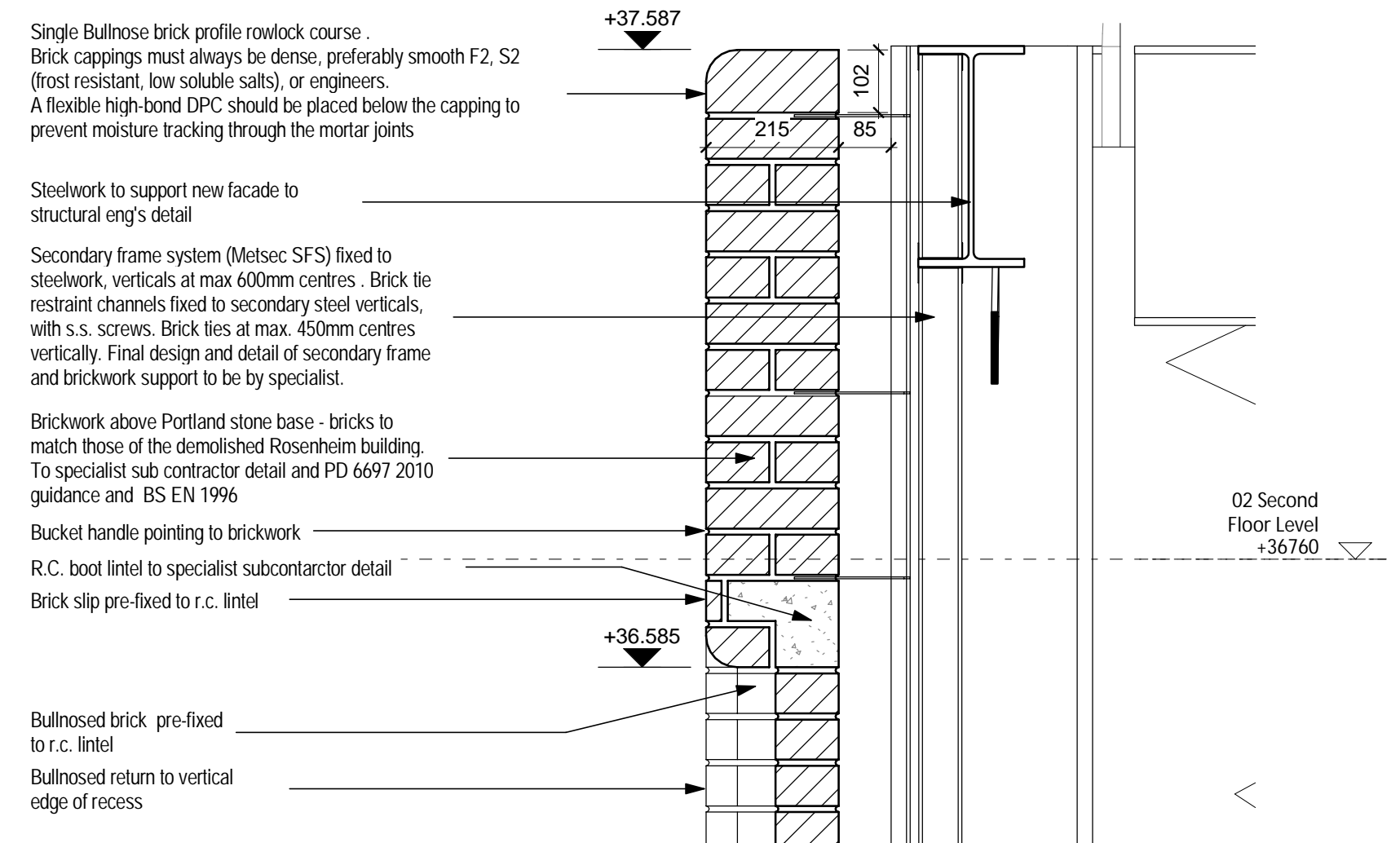


NOTE:

**Non-Material Amendment Application**

**Proposed Changes in relation to existing Planning Approval Ref: 2013/8192/P and clarifications of details as required under condition no. 3 with the exception of item 5 below.**

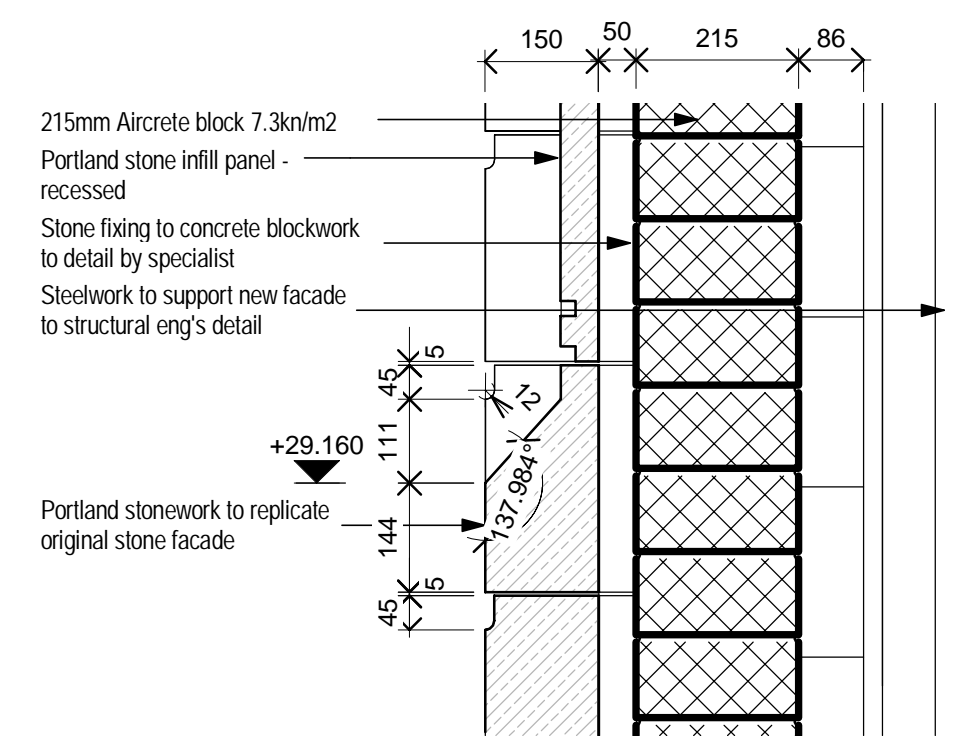
1. Base of the VIE enclosure to be reconstructed to replicate original external appearance of the Rosenheim building based on detailed surveys.
2. New brick enclosure will be constructed as a traditional solid brick construction.
3. Existing JB PUB gable wall to be externally clad with a new 100mm block work leaf up to VIE enclosure level. Above the VIE enclosure level the existing JB PUB gable wall will be externally clad with a new 100mm brickwork leaf to match JB PUB brickwork.
4. Undercroft level below proposed VIE ground floor slab will be a non habitable below ground chamber and will not be used for storage.
5. Final specification and details of the base (from ground to base of brickwork level) of the VIE enclosure will be subject to a further submission.



**VIE - Detail Section - Brickwork head 1-10 Non Material Amendment Application**

3

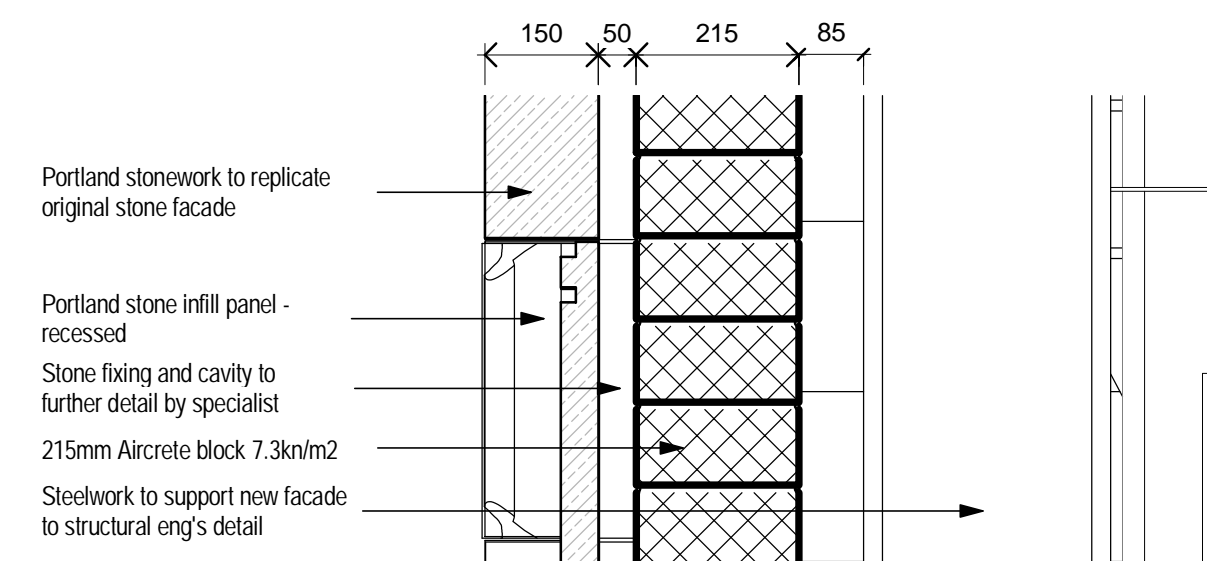
1 : 10



**VIE - Detail Section - Cill to recess in stone 1-10 Non Material Amendment Application**

4

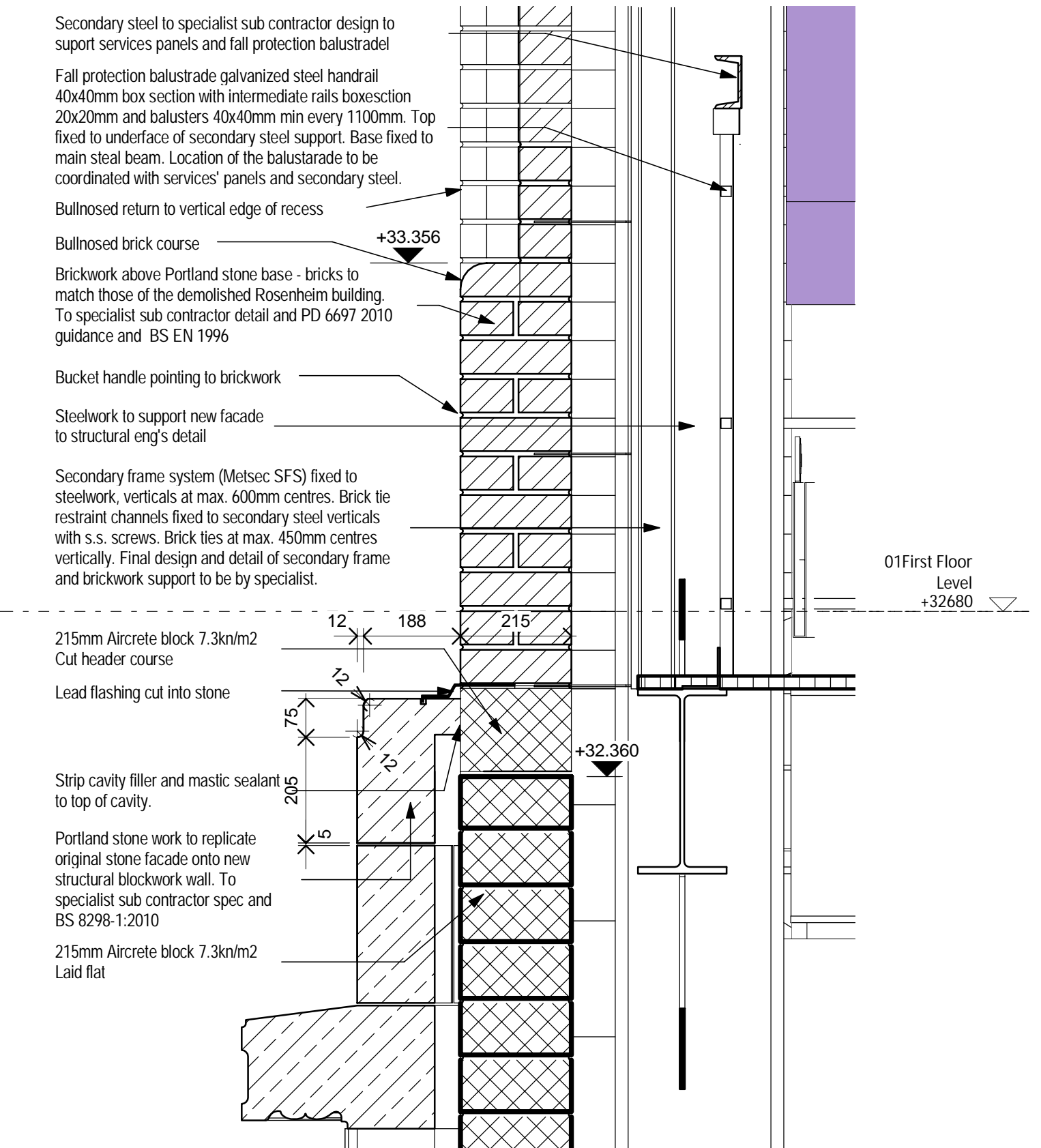
1 : 10



**VIE - Detail Section - Head of recess in stone 1-10 Non Material Amendment Application**

5

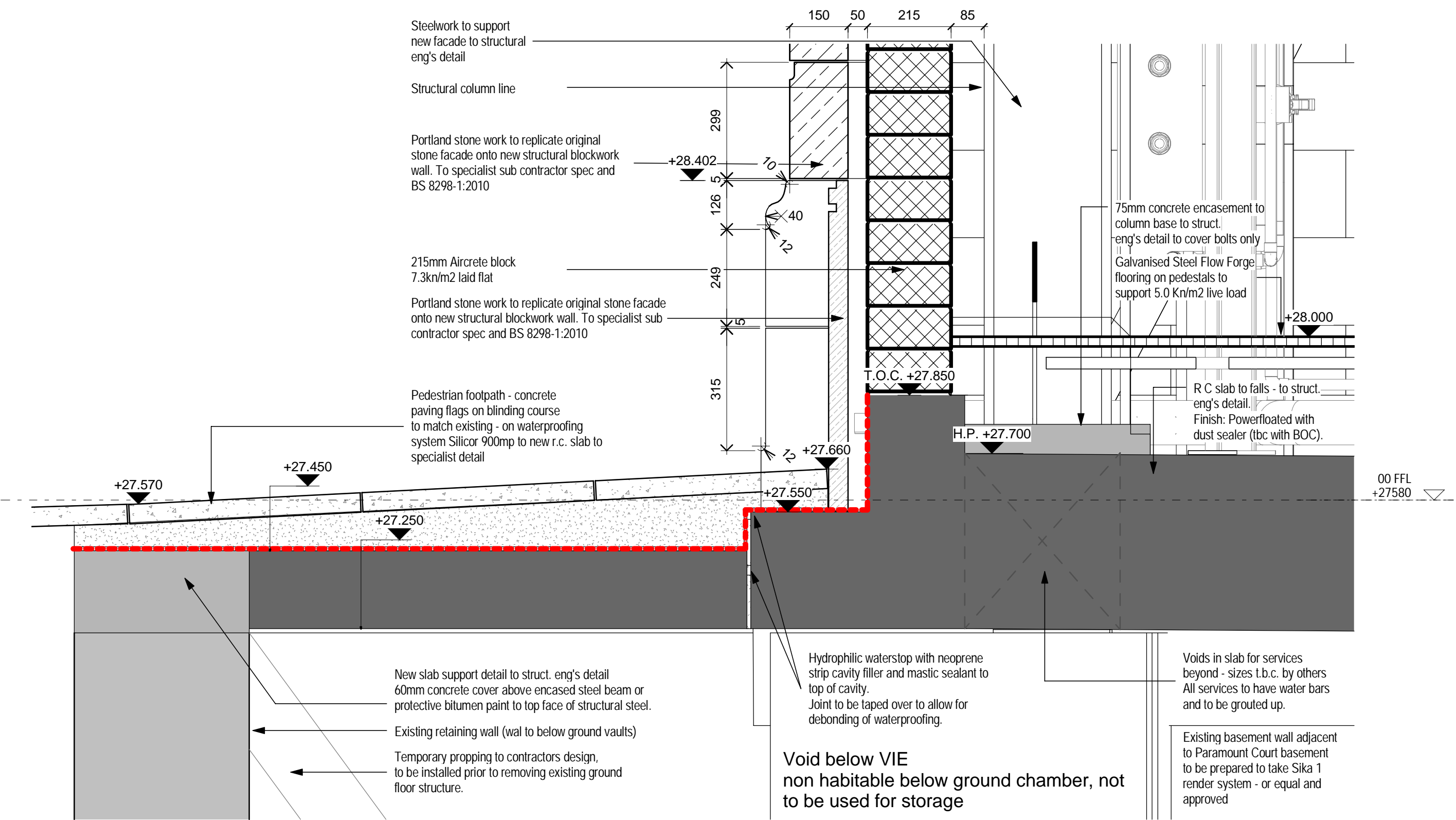
1 : 10



**VIE - Detail Section - Brickwork Base / Stone head 1-10 Non Material Amendment Application**

2

1 : 10



**VIE - Detail Section - Base of wall recess 1-10 Non Material Amendment Application**

1

1 : 10

Rev	DATE	REVISION HISTORY	Dsg	Drw	Chk	App
D	30/06/20	Non Material Amendment Application				
C	26/06/20	Non Material Amendment Application				
B	24/06/20	Non Material Amendment Application				
A	22/06/15	Non Material Amendment Application				



**BOUYGUES**  
Head Office:  
Elizabeth House,  
39 York Road,  
London, SE1 7NG.  
Tel: 020 7401 0020  
Fax: 020 7401 0030  
www.bouygues-uk.com

University College London Hospitals **NHS** NHS Foundation Trust  
Scott Tallon Walker Architects

Name	Signature	Date
Designed by	Designer	
Drawn by	Author	
Checked	Checker	
Approved	Approver	

ORIGINATOR  
SCALE 1 : 10  
FIRST ISSUE DATE 22/06/15  
PROPOSED STATUS S2 - Issued for information

DRAWING TITLE						
Proton Beam Therapy - Phase 4						
VIE - Facade Details - Non Material Amendment Application						
PROJECT	ISSUER	AREA	LEVEL	TYPE	TRADE	SEQUENCE
P4PB	STW	VIE	SL	DET	A31	180060
REV	DATE	DESCRIPTION	BY	CHKD	APPD	DATE