

EXISTING EXTERNAL WALLS
Existing solid brickwork retained

EXISTING INTERNAL WALLS
Existing internal walls retained

INSULATION TO EXISTING EXTERNAL WALLS
330mm Solid brickwork
25mm Cavity (25x47mm battens @ 600 ctrs)
59.5mm Celotex GS5050 (50 + 9.5mm) joints taped as VCL
Board joints sealed as VCL + Air Leakage Barrier
3mm Plaster, lightweight skim or similar approved to give a U value of 0.27W/m²K
(U value of 0.29W/m²K with 215mm brickwork wall)

BASEMENT RETAINING WALL
Reinforced Concrete Retaining Wall in accordance with the Structural Engineer's Specification
Delta-MS 500 tanking layer fixed in accordance with the manufacturer's recommendations
25 x 47mm battens @ 600 ctrs
52.5mm Celotex PL4040 insulation
To give a U-value of 0.24W/m²K

NEW EXTERNAL CAVITY WALL
External Brick leaf 102.5mm thick
100mm ventilated cavity use (low emissivity) - Stalix RT2 wall ties
45mm thick Celotex CW4000 or similar approved thermal insulation applied to external face of inside leaf
100mm blockwork to the Structural Engineer's Specification
To give a U-value 0.28W/m²K

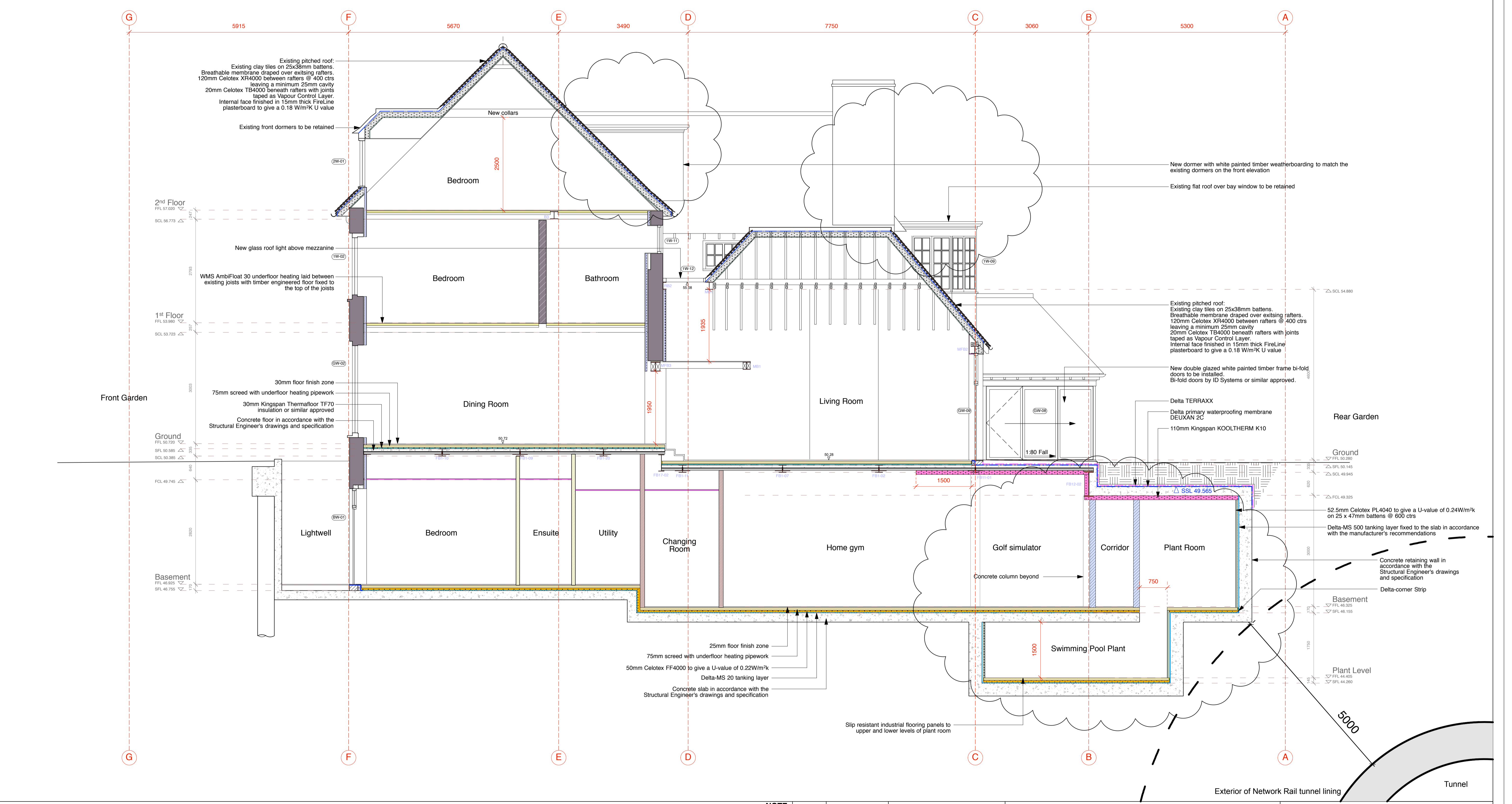
INTERNAL PARTITION 2
Two layers of 12.5mm WallBloc each side of 70mm Gyplframe 'C' Studs at 600mm centres.
25mm Isover APR 1200 in the cavity.
Full height ply to be incorporated into build up behind partitions on which sinks and tiles are to be installed
4600mm maximum partition height
30 minute fire resistance
49RwdB sound resistance
British Gypsum system ref:A206047

INTERNAL PARTITION 3
Two layers of 15mm SoundBloc each side of 70mm Gyplframe 'C' Studs at 600mm centres with Gyplframe RB1 Resilient Bar at 600mm centres to both sides.
50mm Isover APR 1200 in the cavity.
3300mm maximum partition height
30 minute fire resistance
65RwdB sound resistance
British Gypsum system ref:A316013

INTERNAL PARTITION 4
One layer of 15mm WallBloc each side of two frames of Gyplframe 92 S 10 'C' Studs at 600mm centres with Gyplframe 99 FC 50 Fixing Channel at 3600mm centres (or Gyplframe GA65 Acoustic Braces at 3300mm centres).
100mm Isover SpaceSaver Ready-Cut in the cavity.
8000mm maximum partition height
60 minute fire resistance
70RwdB sound resistance
British Gypsum system ref:A326003

SWIMMING POOL CONSTRUCTION
10mm tiled surface & 3mm bed
20mm render & 3mm tanking
200mm Reinforced concrete gunite pool structure in accordance with Aqua Platinum's drawings and specification
100mm Collecta HEXATHERM XPOOL insulation
To give a U-value of 0.25W/m²K

NEW DORMER SIDES
Tiling battens, clay tiles and sarking felt
50mm ventilated wall cavity with 100mm Celotex FR5000 between rafters as specified by the Structural Engineer
40mm Celotex FR5000 beneath rafters taped joints as VCL and 12.5mm Knair wallboard or similar approved to give a U value of 0.18 W/m²K



PROPOSED SECTION BB

NOTE:
Dimensions to be checked by the Contractor against site conditions.
The Contractor to satisfy himself that the intended work is feasible prior to starting work on site.

All work to be carried out in accordance with Structural Engineer's design, details and specification.
Pringuer-James Consulting Engineers
tel. 0208 940 4159
This drawing to be read in conjunction with PJCE's drawings.

PROJECT	17 WADHAM GARDENS LONDON NW3 3DN		
CLIENT	ADAM ANDREWS		
SCALE	1:50 @ A1	DATE	MAR 2015
DWG BY	J.W	REV.	A
CHECKD.	DWG NO.	462-PA.24	

© gpad ltd.

gpad architecture & interior design

T: 020 7549 2133
F: 020 7549 2144
E: info@gpadltd.com
W: www.gpadltd.com

Unit 1
9a Dallington Street
Clerkenwell
London EC1V 0BQ