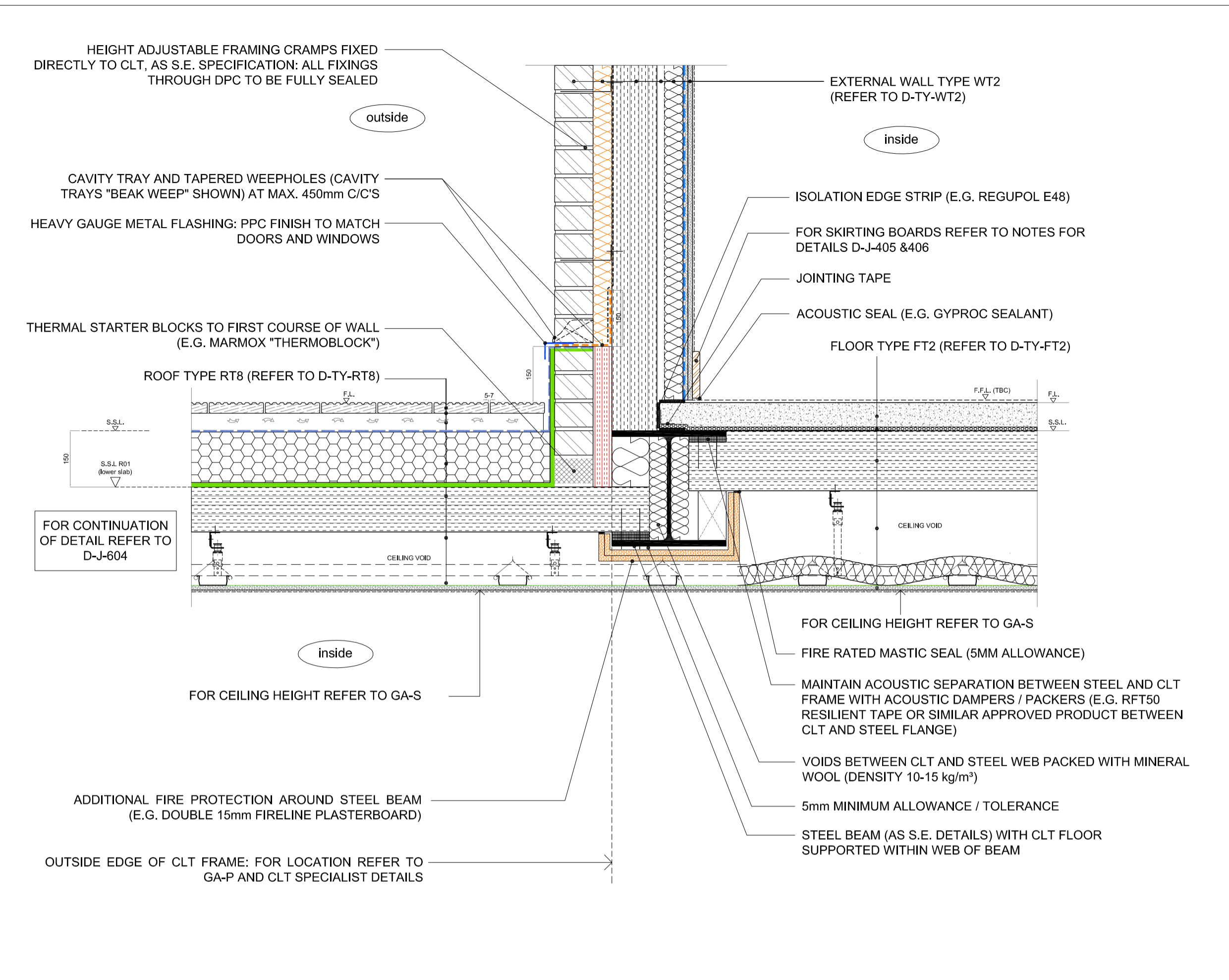
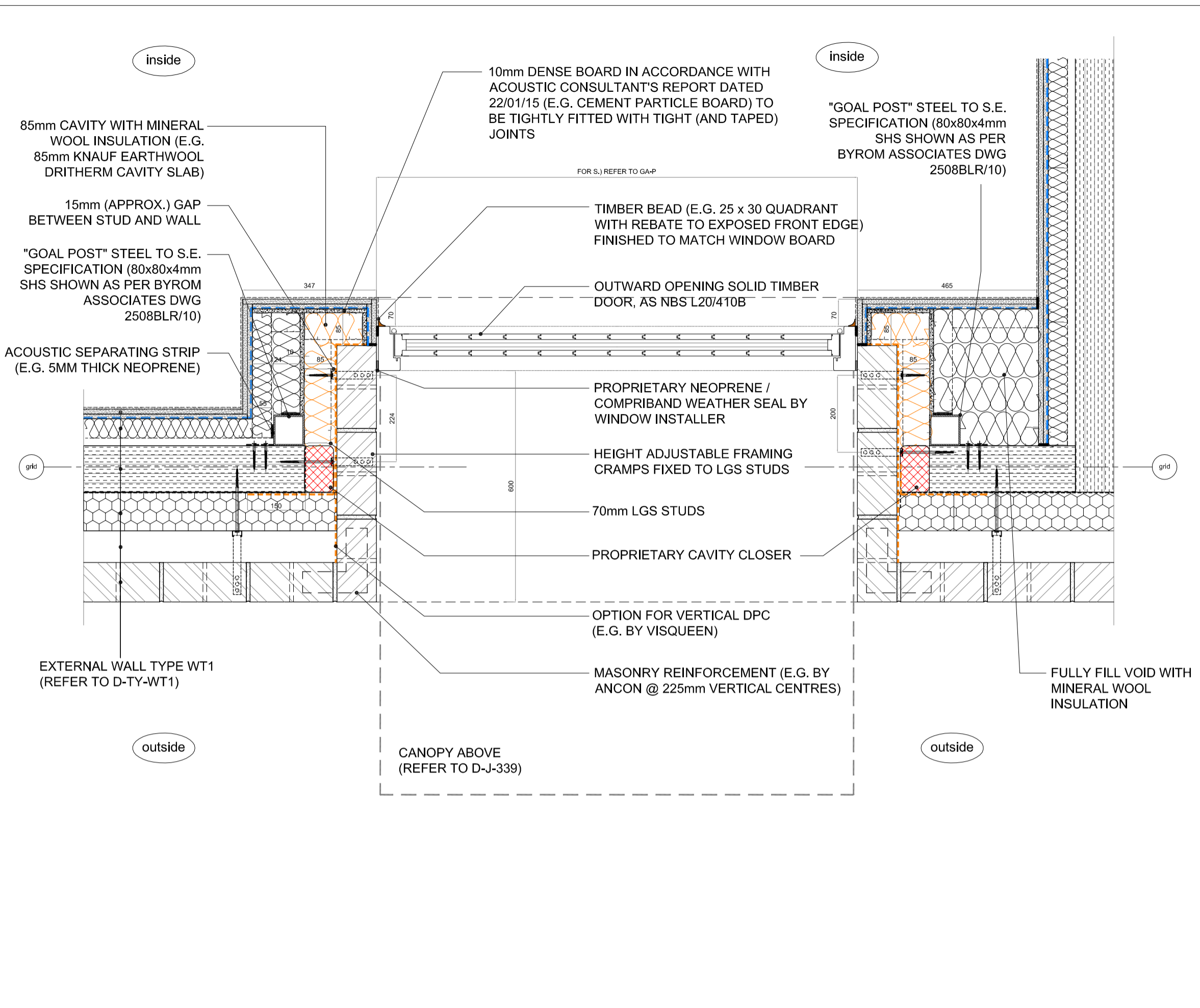


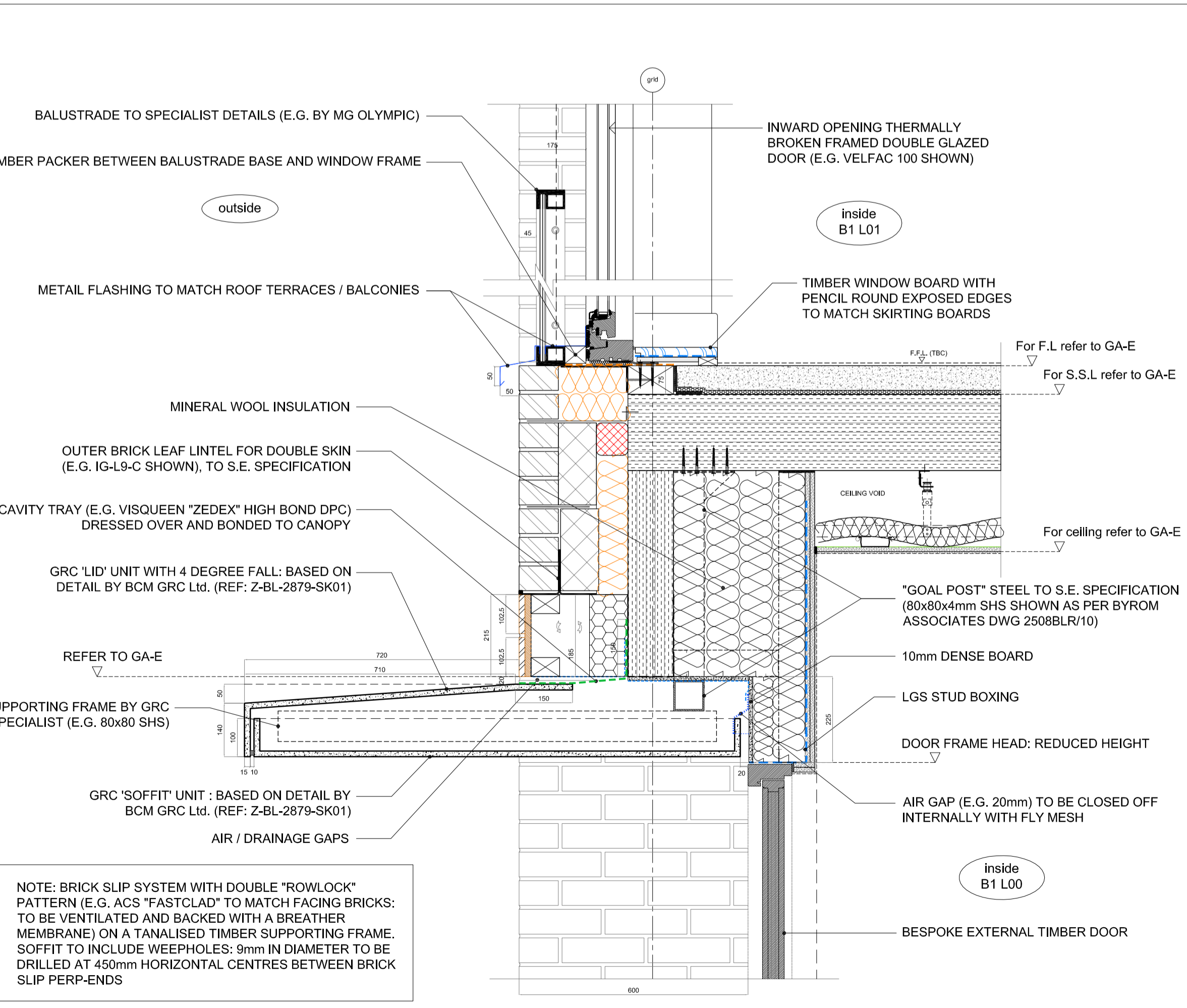
job: BACTON LOW RISE LONDON NWS	drawn: JPB	date: 11.14
drawing: TYPICAL JUNCTIONS - DOORS & WINDOWS Details 337 to 340	scale: 1:10 @ A1 1:20 @ A3	job no: 1952
note: all dimensions to be checked on site. In the event of any discrepancy between the drawing and the work, the drawing shall prevail. For all applications for planning purposes do not scale, use dimensions, this drawing is for reference only.	drawing no: D-J-337 to 340	rev. as below

rev.	date	description	issued by	checked by
C1	08.01.15	Details D-J-337, 338 & 339 Issued for construction	JPB	GW
C2	15.01.15	Updates in response to KCA comments dated 07.01.15	JPB	GW
C3	23.01.15	Response to acoustic report dated 22/01/15. Lintel added in lieu of Masonry Restraint for ground floor soffit D-J-339	JPB	GW
C4	02.03.15	Updates in response to Bauder comments dated 23.02.15	JPB	JD
C5	23.04.15	"Goal Post" canopy support added following DTM 21.04.15	JPB	GB
C6	24.04.15	Canopy height dropped following RCL comments 23.04.15	JPB	GB
C7	05.05.15	Specification of cavity tray revised as RCL notes 01.05.15	JPB	GB
C8	19.05.15	GRC canopy revised for D-J-339 as RCL notes 14.05.15	JPB	JD



DETAIL - D-J-337 - Block B1 South - PLAN - Private entrance

DETAIL - D-J-338 - Block A - Terrace Wall - Reduced thickness (Type WT2)



NOT USED

DETAIL - D-J-339 - Block B1 South - Private entrance - SECTION

NOTE: BRICK SLIP SYSTEM WITH DOUBLE "ROWLOCK" PATTERN (E.G. ACS "FASTCLAD") TO MATCH FACING BRICKS: TO BE VENTILATED AND BACKED WITH A BREATHER MEMBRANE ON A TANALISED TIMBER SUPPORTING FRAME. SOFFIT TO INCLUDE WEEPHOLES: 9mm IN DIAMETER TO BE DRILLED AT 450mm HORIZONTAL CENTRES BETWEEN BRICK SLIP PERP-ENDS