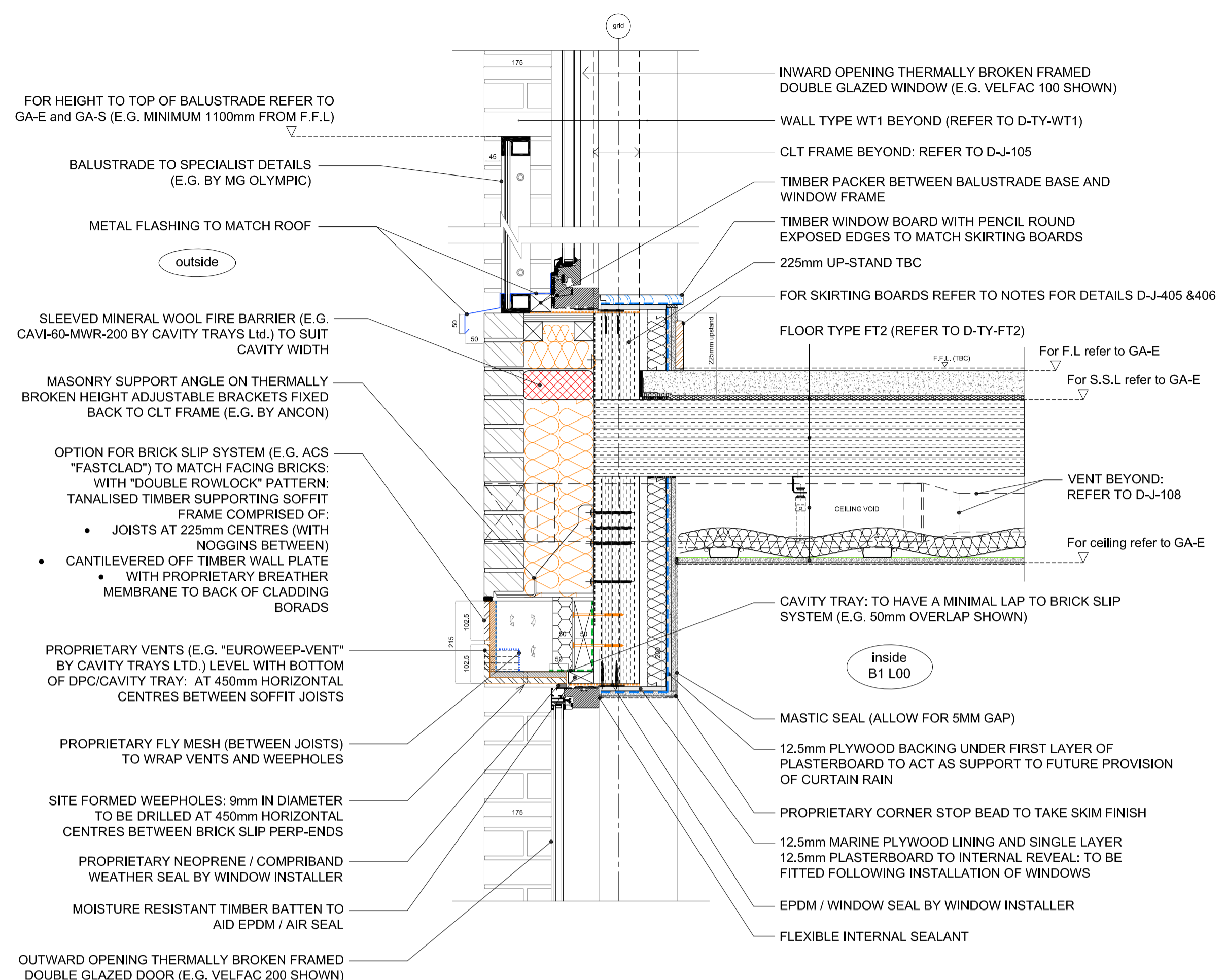
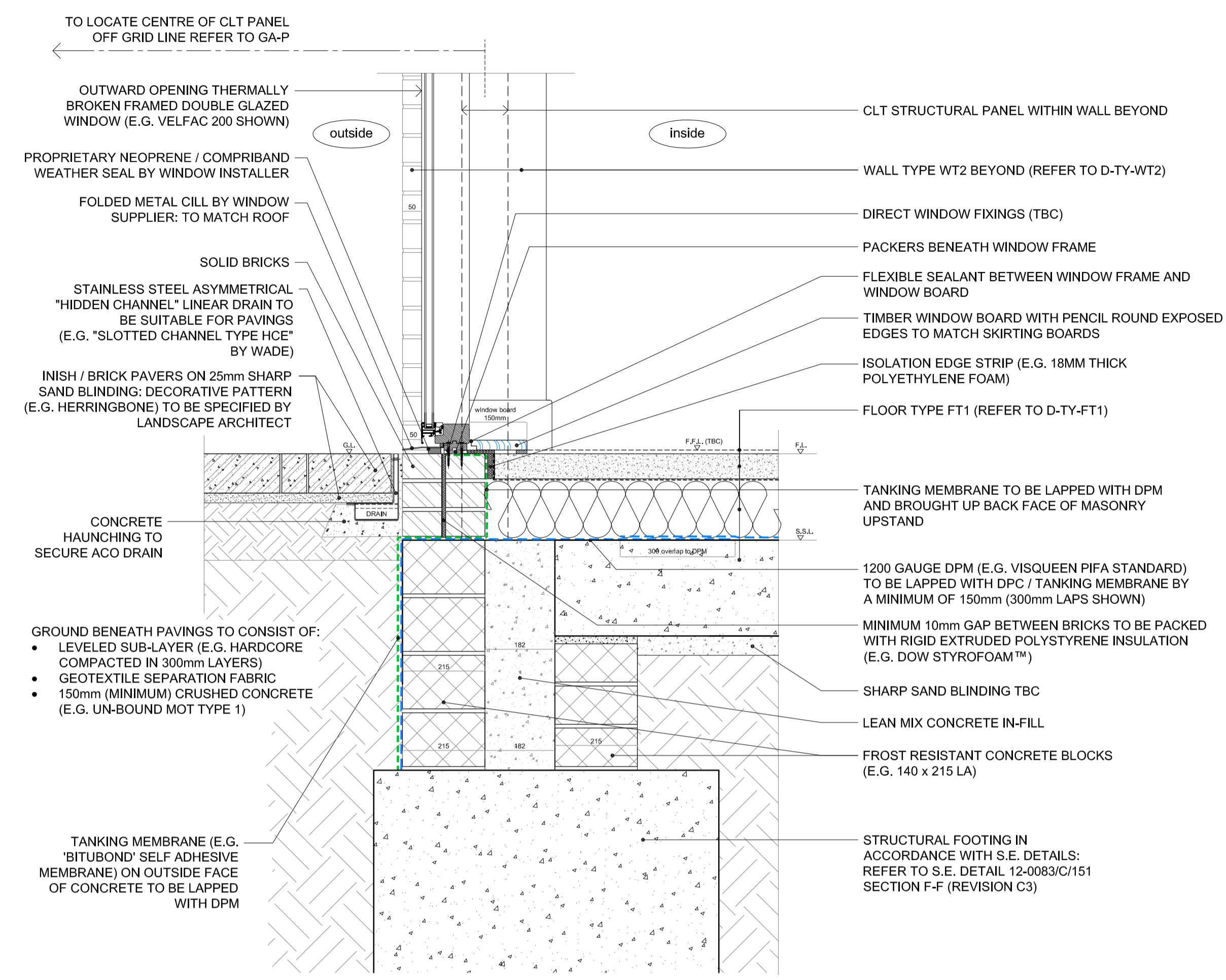


job	BACTON LOW RISE LONDON NWS	drawn	JPB	date	08.14
drawing	TYPICAL JUNCTIONS - DOORS & WINDOWS Details 317 to 320	scale:	1:10 @ A1 1:20 @ A3	job no:	1952
revisions		drawing no.	D-J-317 to 320	rev.	as below

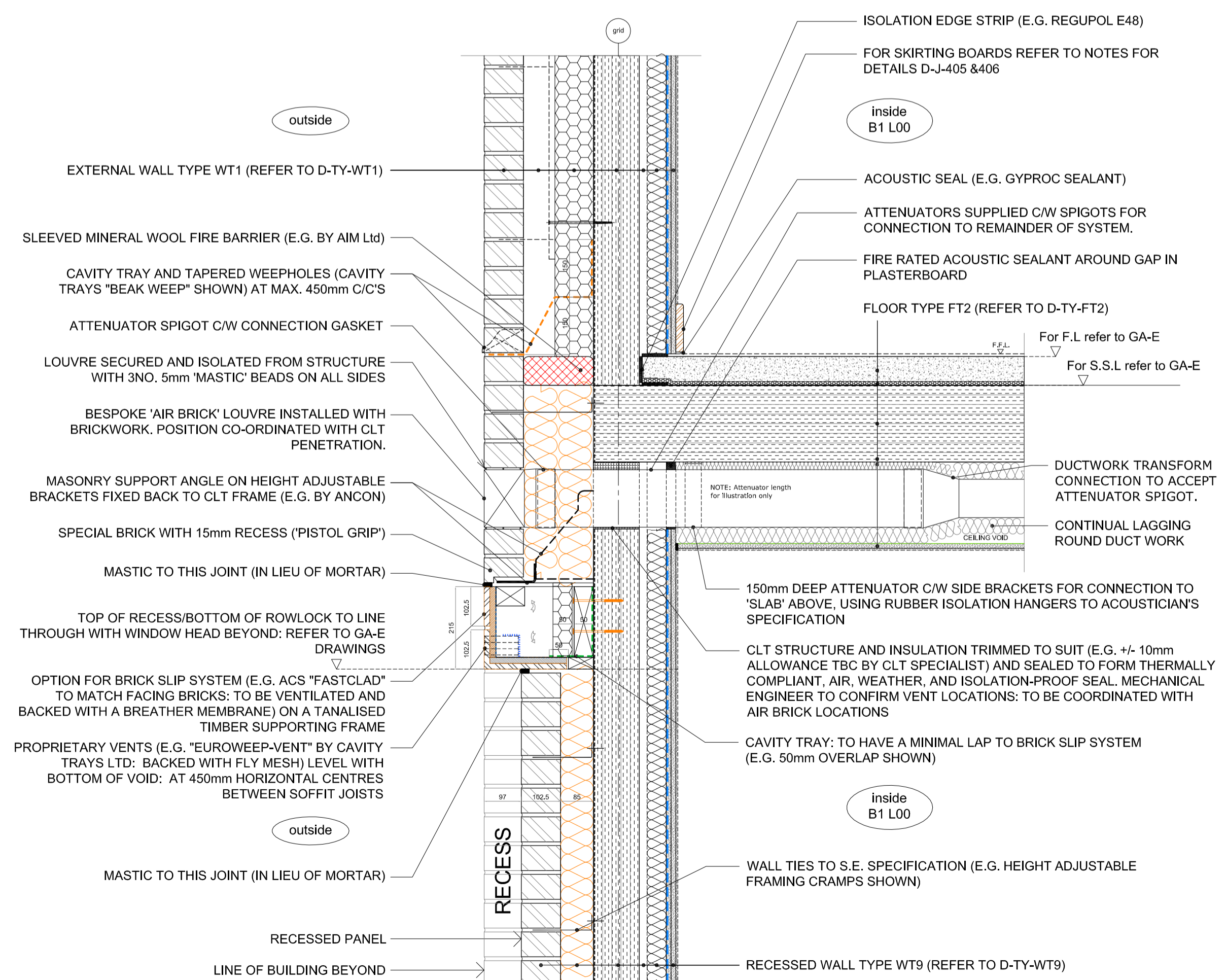
rev.	date	description	issued by	checked by
C1	27.08.14	Issued for construction	JPB	GW
C2	16.10.14	Soffit treatments and masonry restraints updated for D-J-317 and D-J-319	JPB	GW
C3	08.12.14	Updates in response to KCA comments dated 14.11.14	JPB	GW
C4	15.01.15	Juliet balcony balustrade revised for D-J-317 and D-J-320	JPB	GW
C5	02.03.15	Updates in response to Bauder comments dated 23.02.15	JPB	JD
C6	12.03.15	Updates in response to Bauder comments dated 10.03.15	JPB	JD
C7	24.03.15	Updated in response to KCA comments 10.03.15	JPB	JD



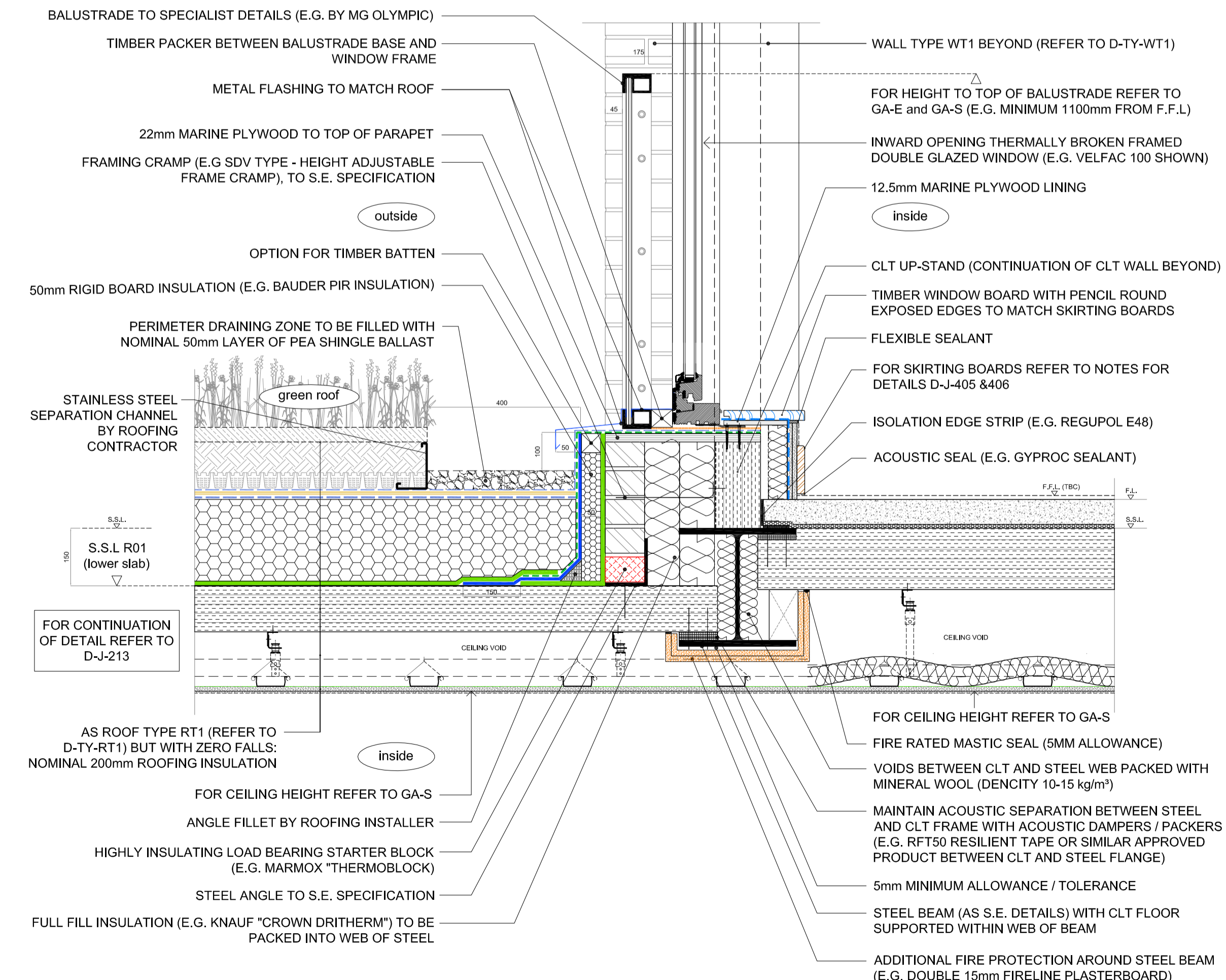
DETAIL - D-J-317 - Block A - Juliet Balcony above outward opening ground floor door



DETAIL - D-J-318 - Block A - Ground floor / Outward opening window (Wall type WT2)



DETAIL - D-J-319 - Block A - Vent through external wall - Above recessed panel



DETAIL - D-J-320 - Block A - Green roof / Juliet Balcony / Inward opening window