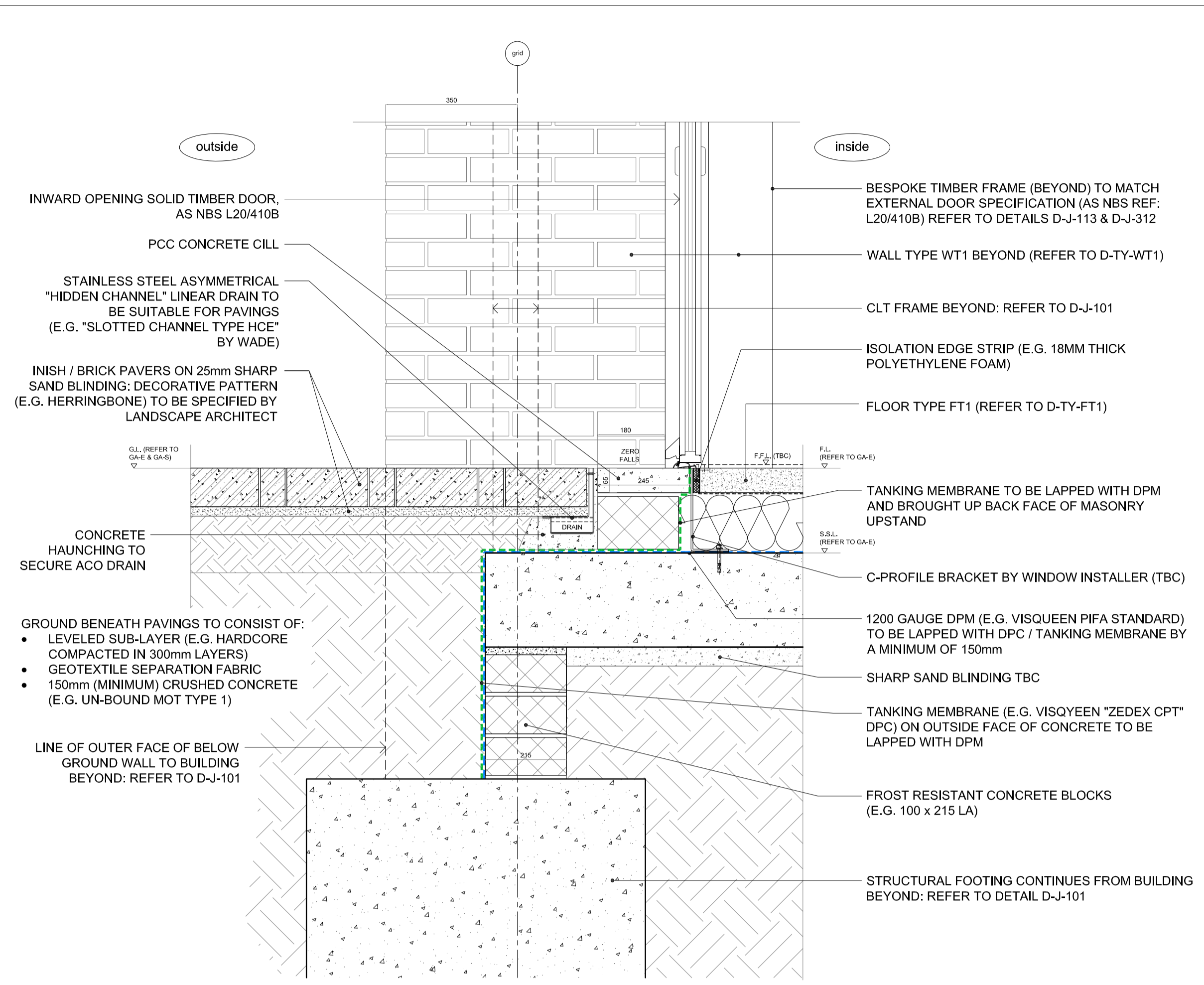
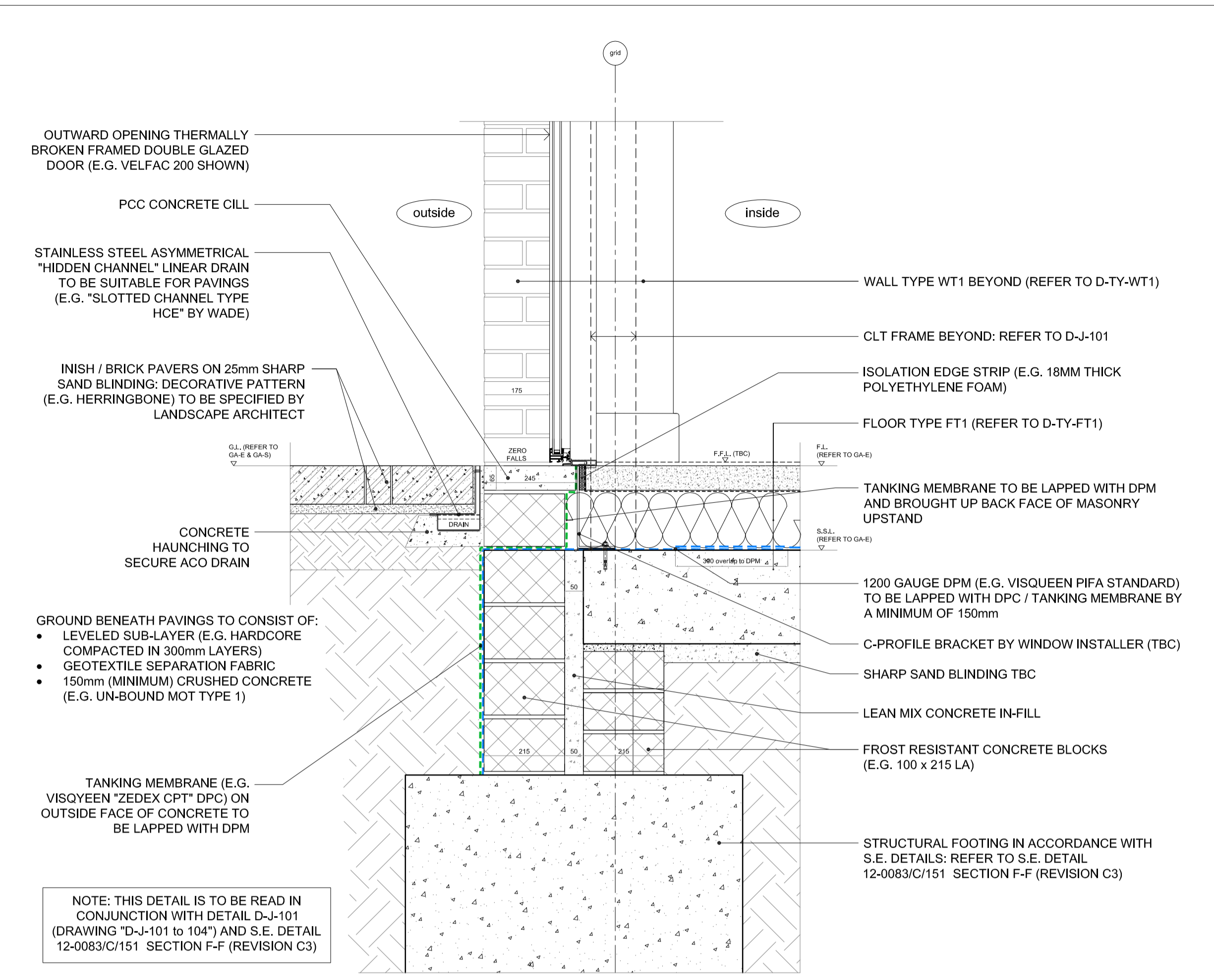


job: BACTON LOW RISE LONDON NWS	drawn: JPB	date: 08.14
drawing: TYPICAL JUNCTIONS - DOORS & WINDOWS Details 301 to 304	scale: 1:10 @ A1 1:20 @ A3	job no: 1952
note: all dimensions to be checked on site. If this drawing exceeds the quantities in the bill of materials to be informed before the work is commenced. For all other than planning application purposes do not scale, use dimensions, this drawing is not to be used for construction.	drawing no: D-J-301 to 304	rev. as below

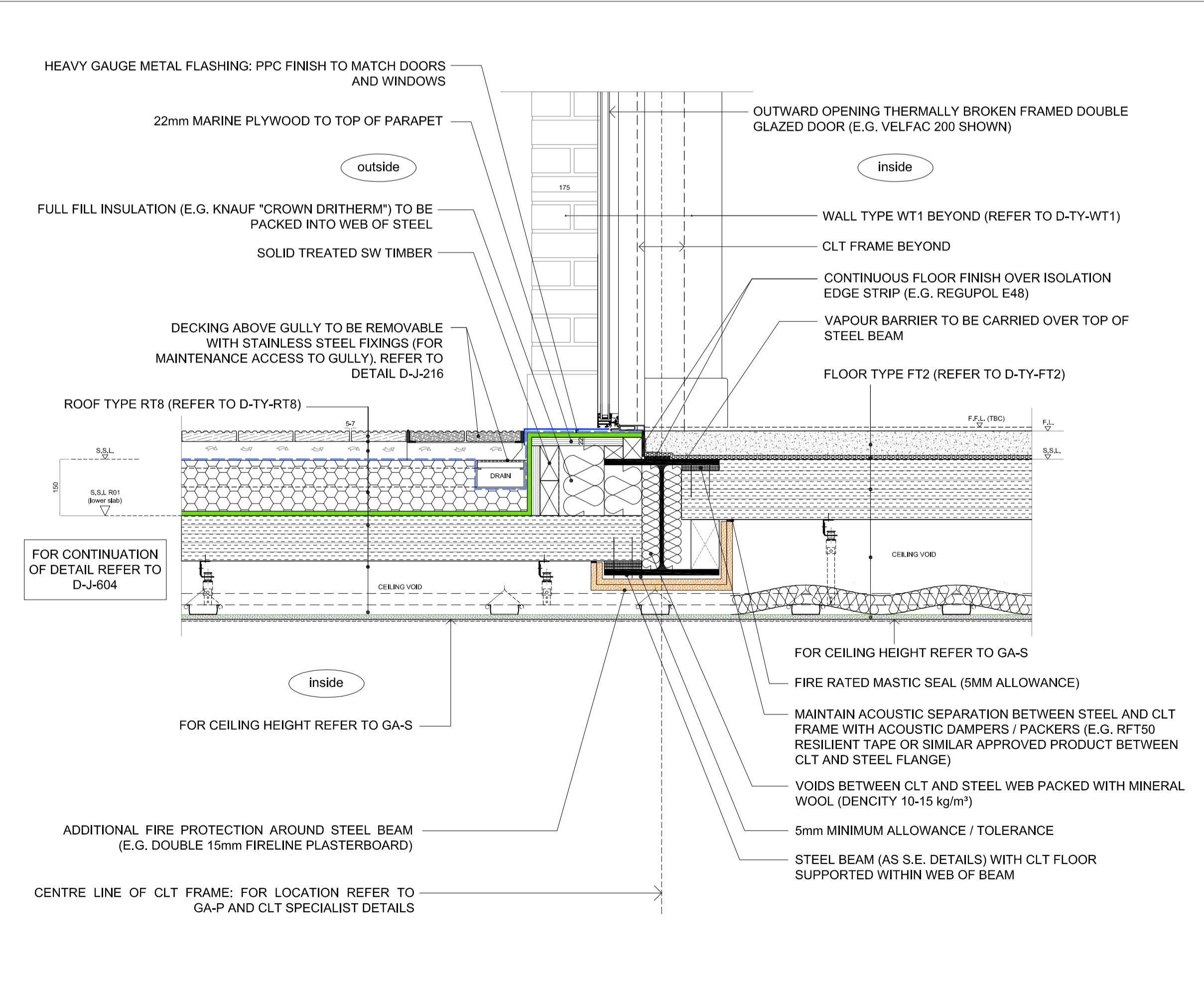
rev.	date	description	issued by	checked by
C1	27.08.14	Issued for construction	JPB	GW
C2	08.12.14	Updates in response to KCA comments dated 14.11.14	JPB	GW
C3	15.01.15	Updates in response to KCA comments dated 07.01.15 and threshold position moved for Detail D-J-304	JPB	GW
C4	02.03.15	Updates in response to Bauder comments dated 23.02.15	JPB	JD
C5	23.04.15	"Goal Post" canopy support added following DTM 21.04.15	JPB	GB
C6	24.04.15	See SC_DS	GB	JD
C7	05.05.15	Drawing number for D-J-302 corrected as RCL notes 01.05.15	JPB	GB



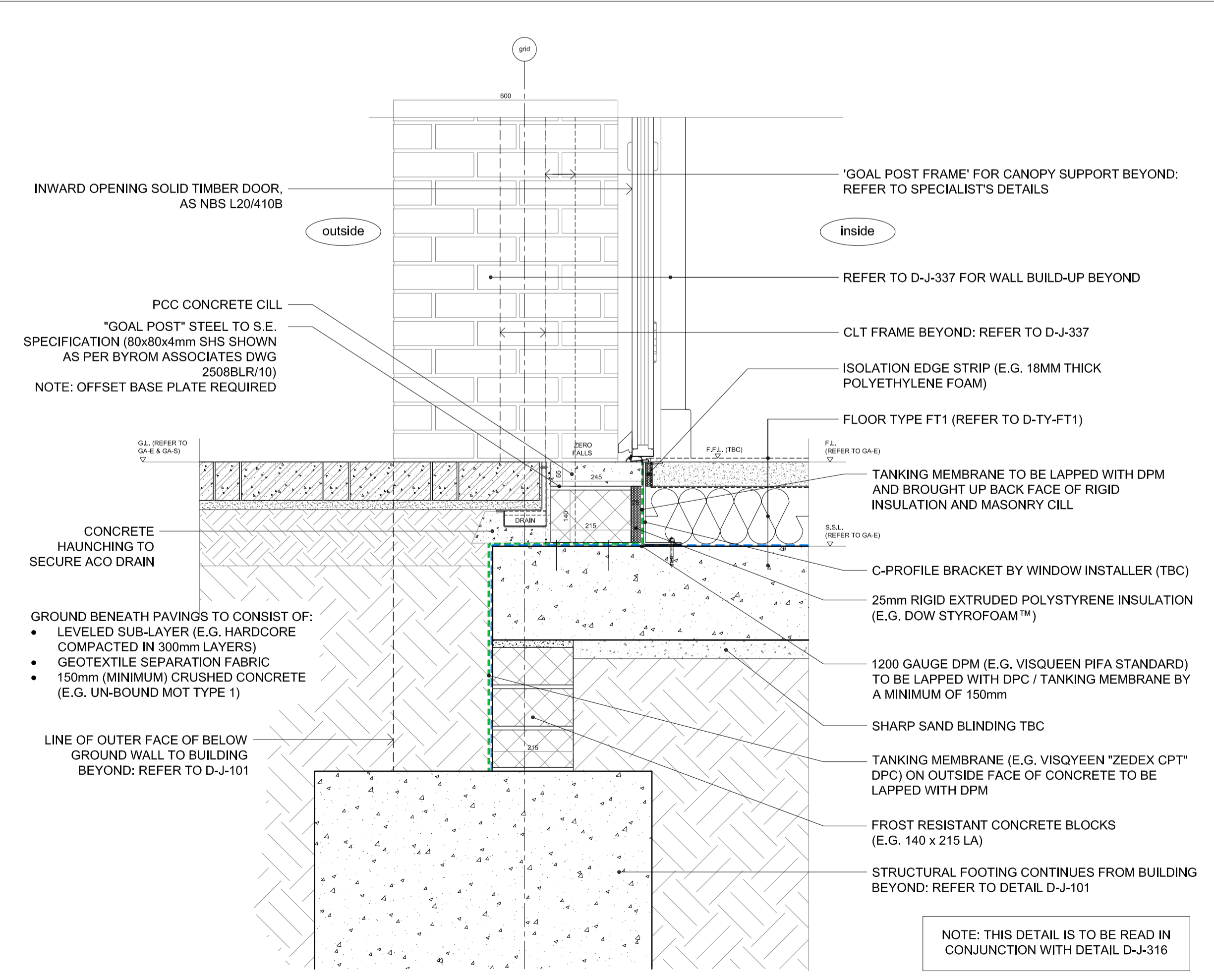
DETAIL - D-J-301 - Block A - Communal entrance threshold - Inward opening door



DETAIL - D-J-302 - Typical external door threshold - Outward opening



DETAIL - D-J-303 - Terrace threshold



DETAIL - D-J-304 - BLOCK B1 - Private entrance threshold - Inward opening door