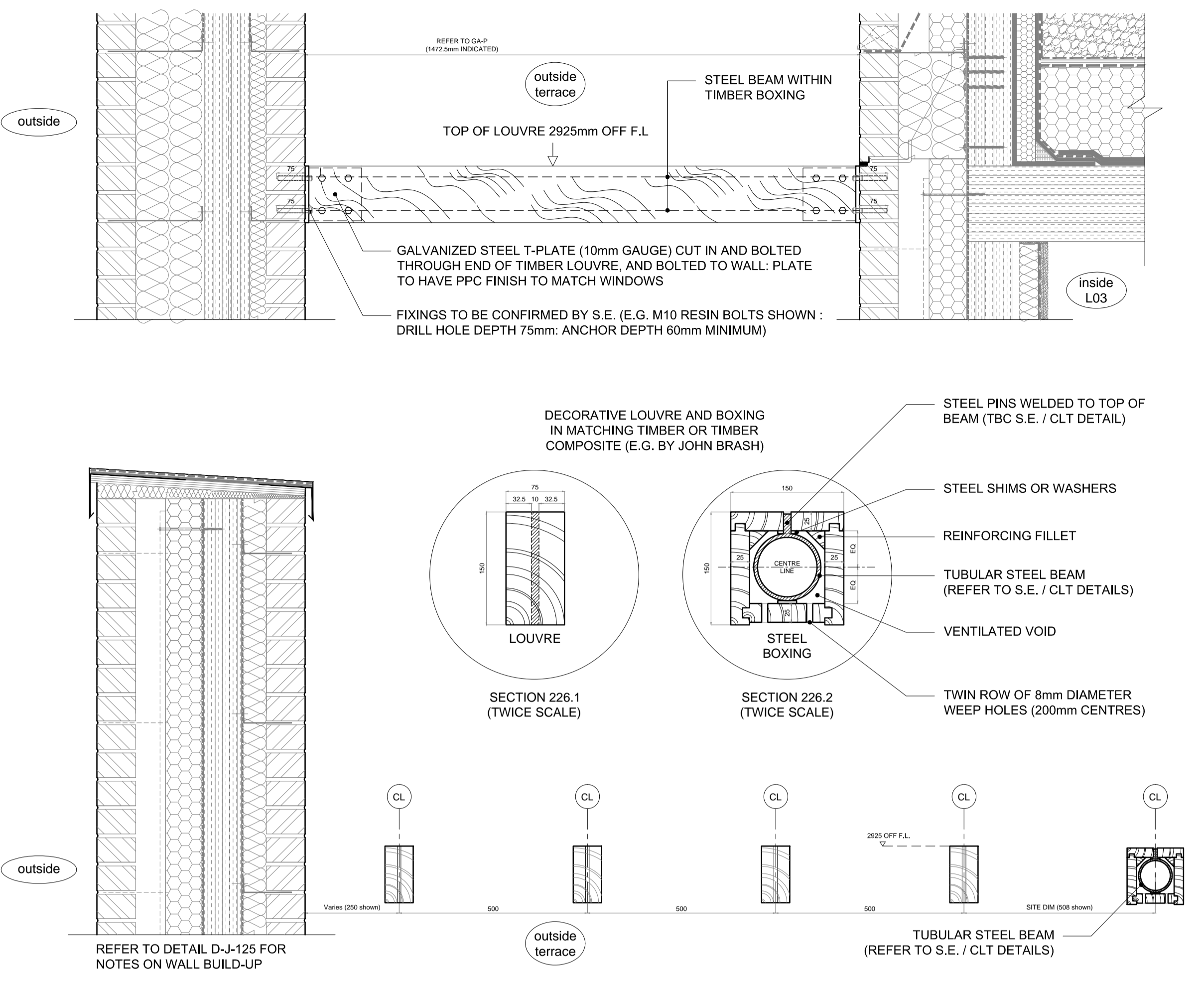
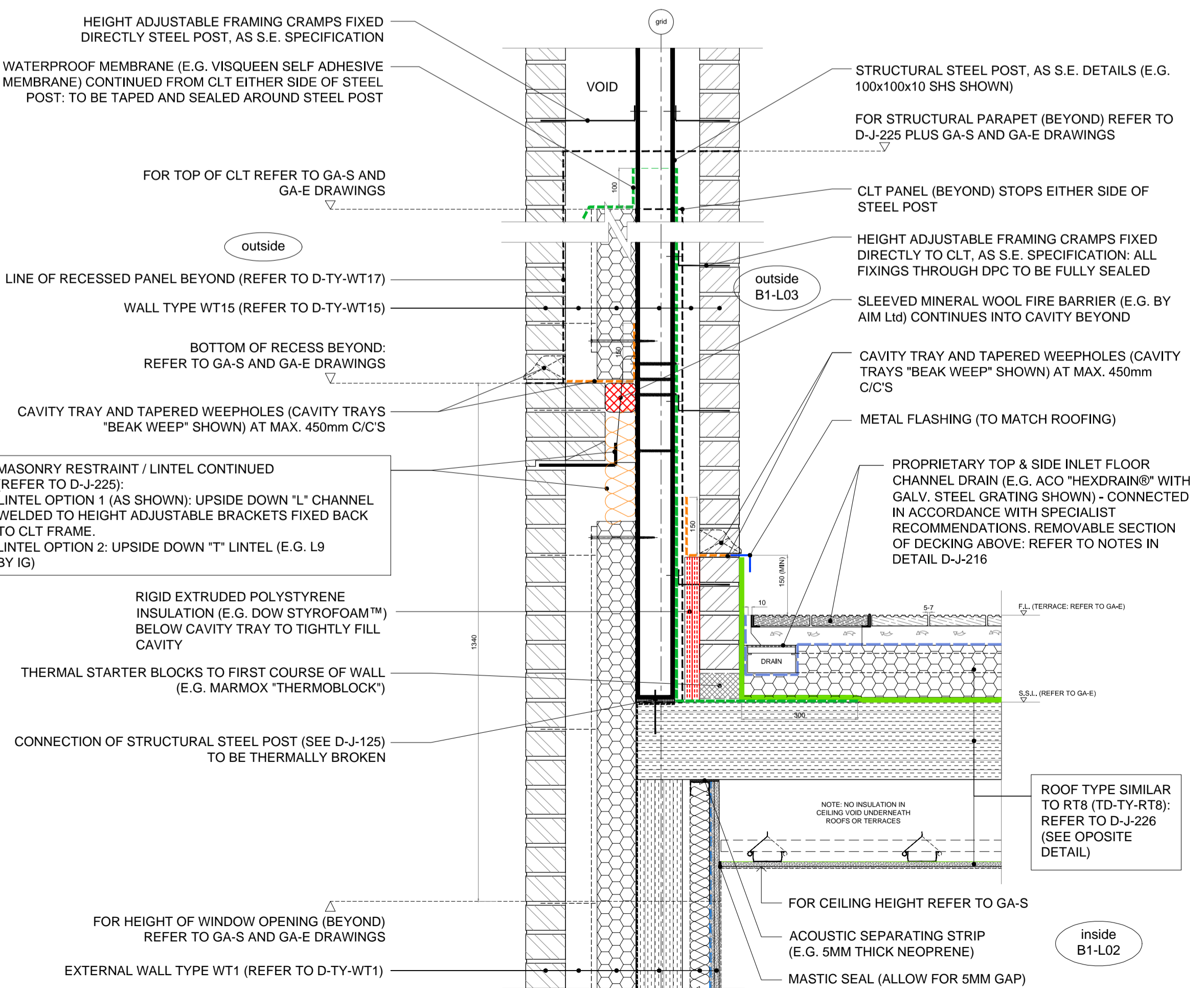


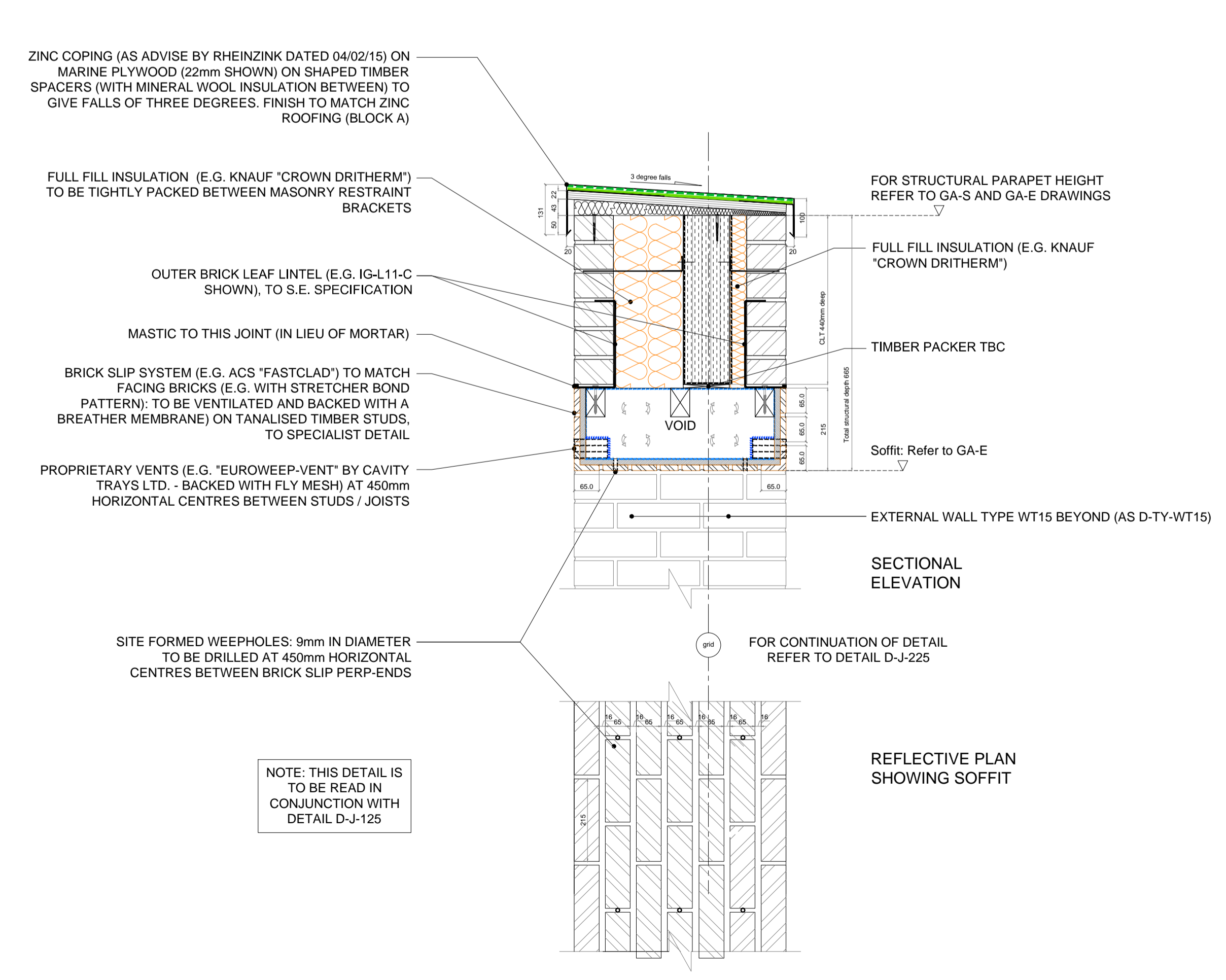
DETAIL - D-J-225 - Block B1 South - Window head / WT1 / balustrade



DETAIL - D-J-226 - Block B1 South - Terrace Louvre Canopy



DETAIL - D-J-227 - Block B1 South - WT1 / Terrace feature pier & planter



DETAIL - D-J-228 - Block B1 South - Feature brickwork - Terrace head

Rydon **ALAN CAMP ARCHITECTS**

Alan Camp Architects LLP, 88 Union Street, London, SE1 0NW
tel: 020 7593 1000, fax 020 7593 1001, mail@alancamp.com

job: BACTON LOW RISE LONDON NWS	drawn: JPB	date: 08.14
drawing: TYPICAL JUNCTIONS - ROOFS & TERRACES Details 225 to 228	scale: 1:10 @ A1 1:20 @ A3	job no: 1952
note: all dimensions to be checked on site. If this drawing exceeds the quantities in the bill of materials, the contractor is to be informed before the work is commenced. For all other than planning application purposes do not scale. Use dimensions, this drawing is for reference only.	drawing no: D-J-225 to 228	rev. as below

rev.	date	description	issued by	checked by
C1	27.08.14	Issued for construction	JPB	GW
C2	22.09.14	Masonry restraints updated for D-J-228 as Ancon designs.	JPB	GW
C3	14.10.14	Masonry and CLT levels / heights revised.	JPB	GW
C4	08.12.14	Updates in response to KCA comments dated 14.11.14	JPB	GW
C5	16.01.15	Updates in response to KCA comments dated 07.01.15	JPB	GW
C6	06.02.15	Updates in response to ECH minutes dated 22.01.15	GW	JPB
C7	16.02.15	Soffit revised for D-J-225 in response to acoustic consultant's advice dated 22/01/2015. Lintel added to detail D-J-228 as per Ancon advise in mark-up from August 2014.	JPB	JD
C8	17.02.15	Updates in response to Rheinzink comments dated 04.02.15	JPB	DWW
C9	23.02.15	Updates in response to KCA comments 18.02.15	GB	JPB
C10	02.03.15	Updates in response to Bauder comments dated 23.02.15	JPB	JD
C11	23.03.15	Updates in response to KCA comments 18.02.15	JPB	JD
C12	21.04.15	New detail D-J-226 issued for comment / approval	JPB	JD
C13	27.04.15	Construction issue following RCL comments 24.04.15	JPB	JD
C14	11.05.15	See SC_DS	JD	GB

Received		11 May 15	
	Initial	Date	
RYDON	RA	22 May 15	
Client			
Status A - No Comments			<input checked="" type="checkbox"/>
Status B - Comments, Revise & Resubmit			<input type="checkbox"/>
Status C - Rejected			<input type="checkbox"/>
For Information Only			<input type="checkbox"/>

NOTE: METAL FLASHING / COPINGS TO MATCH METAL ROOFING MATERIAL & FINISH