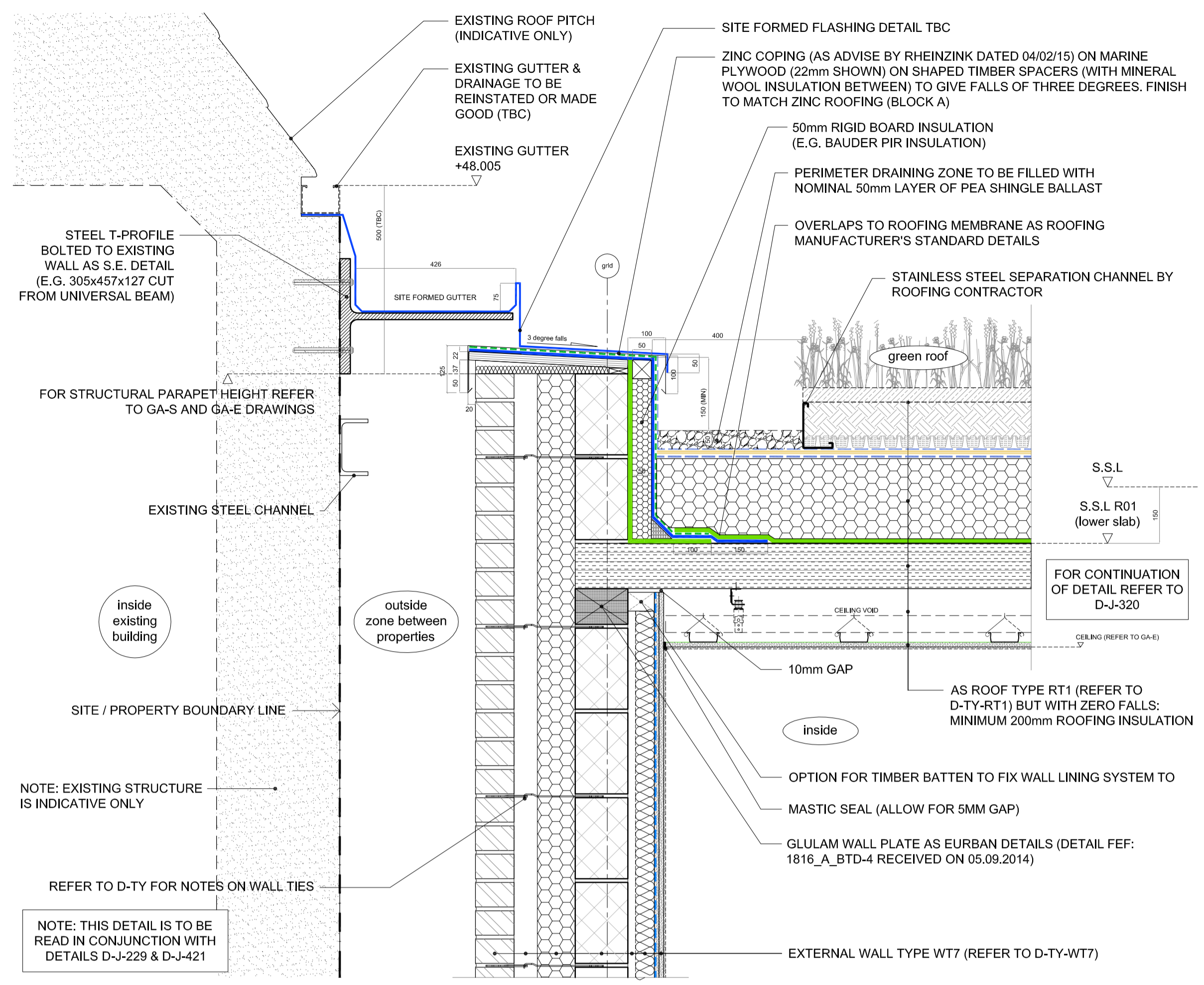
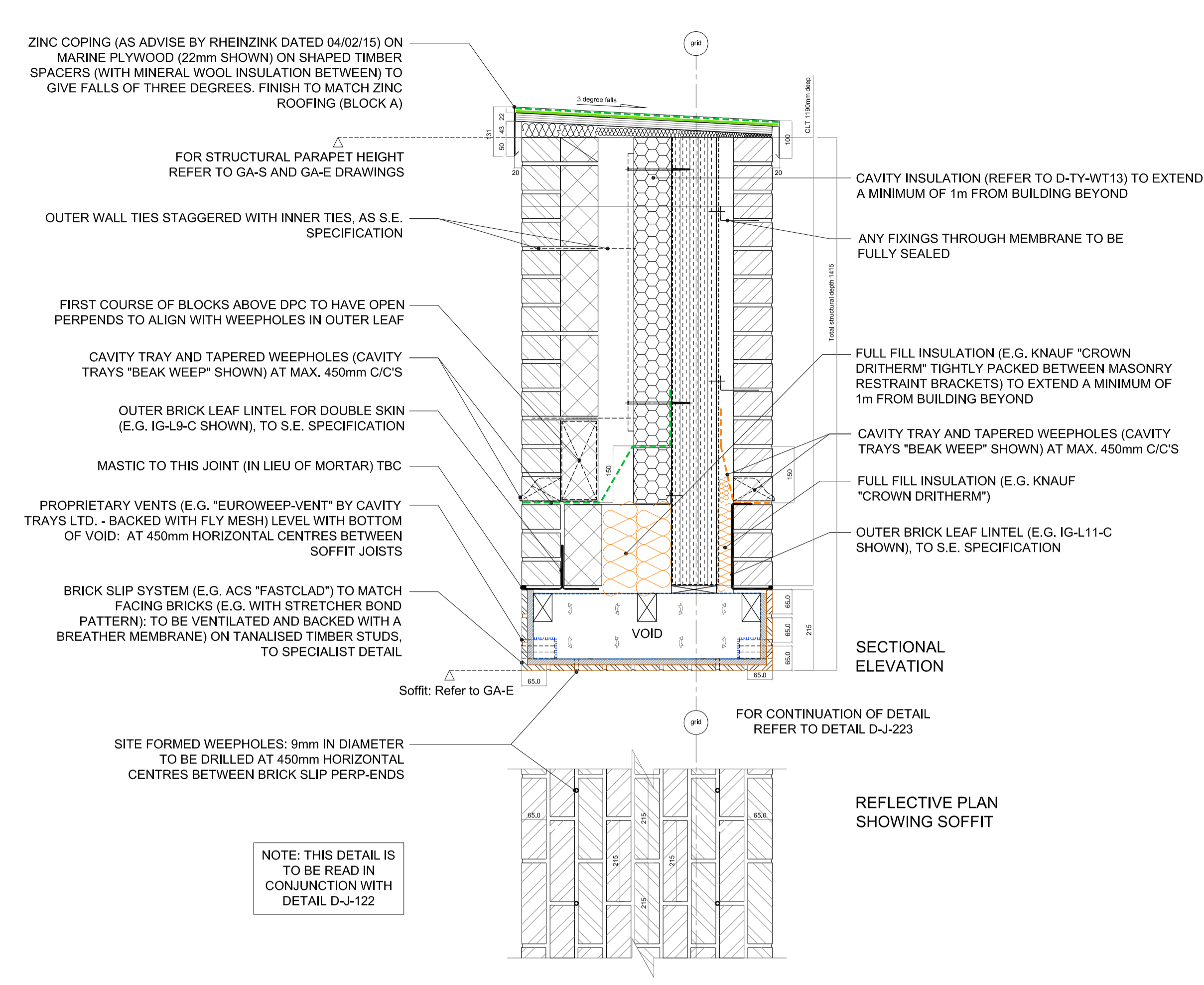


job: BACTON LOW RISE LONDON NWS	drawn: JPB	date: 08.14
drawing: TYPICAL JUNCTIONS - ROOFS & TERRACES Details 213 to 216	scale: 1:10 @ A1 1:20 @ A3	job no: 1952
note: all dimensions to be checked on site prior to commencement of the work. If this drawing exceeds the quantities in the bill of materials to be informed before the work is commenced. For all applications for planning application purposes do not scale, use dimensions, this drawing is not to be scaled.	drawing no: D-J-213 to 216	rev. as below

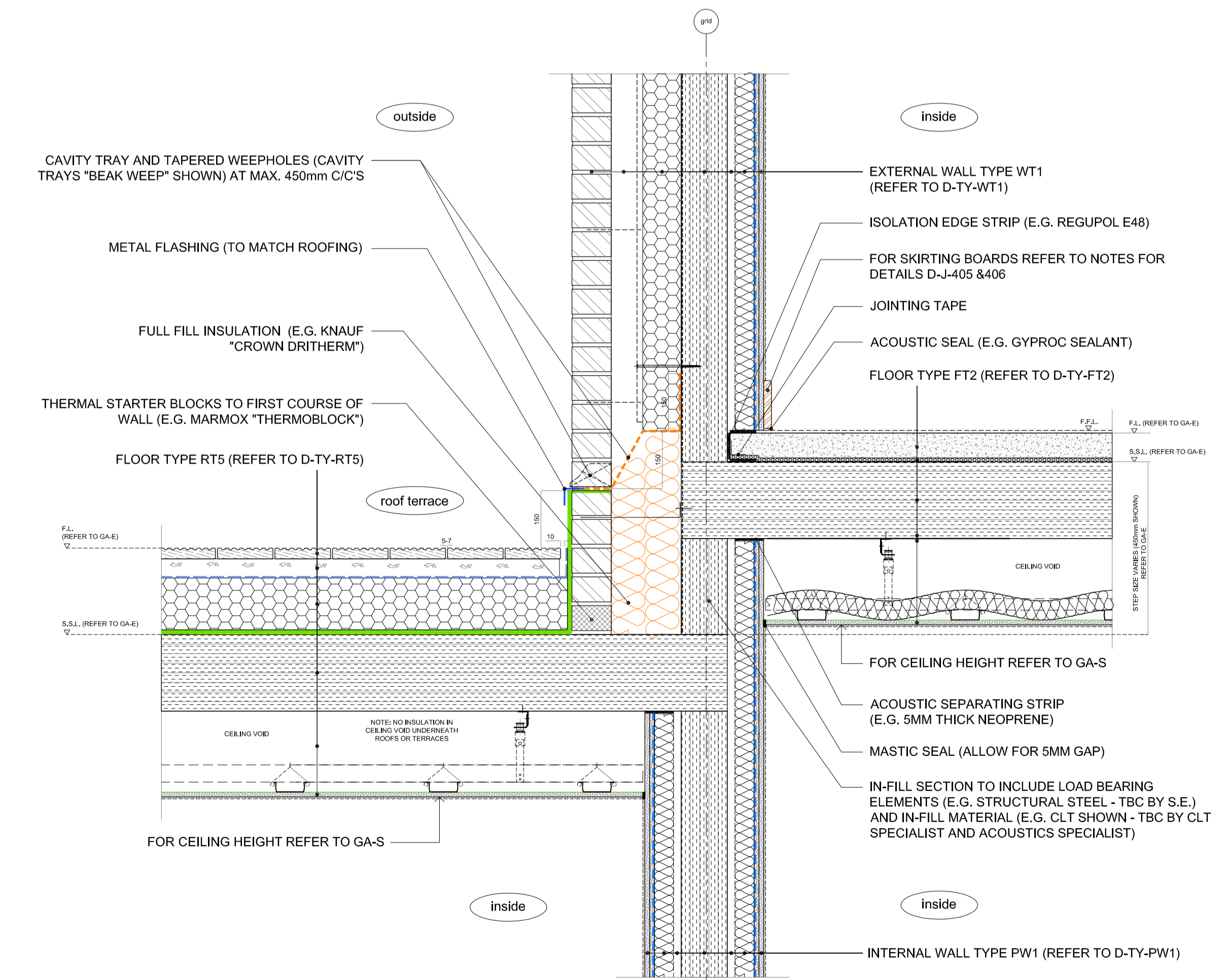
rev.	date	description	issued by	checked by
C1	27.08.14	Issued for construction	JPB	GW
C2	22.09.14	Parapet raised in height for D-J-213. Masonry restraints updated as Ancon designs.	JPB	GW
C3	21.10.14	Inner masonry leaf for D-J-214 changed from bricks to concrete blocks. Cavity trays revised for D-J-215 & 216.	JPB	GW
C4	23.10.14	Extent and pattern for FastClad revised for D-J-214 following consultation.	JPB	GW
C5	08.12.14	Updates in response to KCA comments dated 14.11.14	JPB	GW
C6	16.01.15	Updates in response to KCA comments dated 07.01.15	JPB	GW
C7	06.02.15	Updates in response to ECH minutes dated 22.01.15	GW	JPB
C8	16.02.15	Lintel added to detail D-J-214 as per Ancon advise in mark-up from August 2014	JPB	JD
C9	17.02.15	Updates in response to Rheinzink comments dated 04.02.15	JPB	DWW
C10	23.02.15	Updates in response to KCA comments 18.02.15	GB	JPB
C11	02.03.15	Updates in response to Bauder comments dated 23.02.15	JPB	JD
C12	12.03.15	Updates in response to Bauder comments dated 10.03.15	JPB	JD



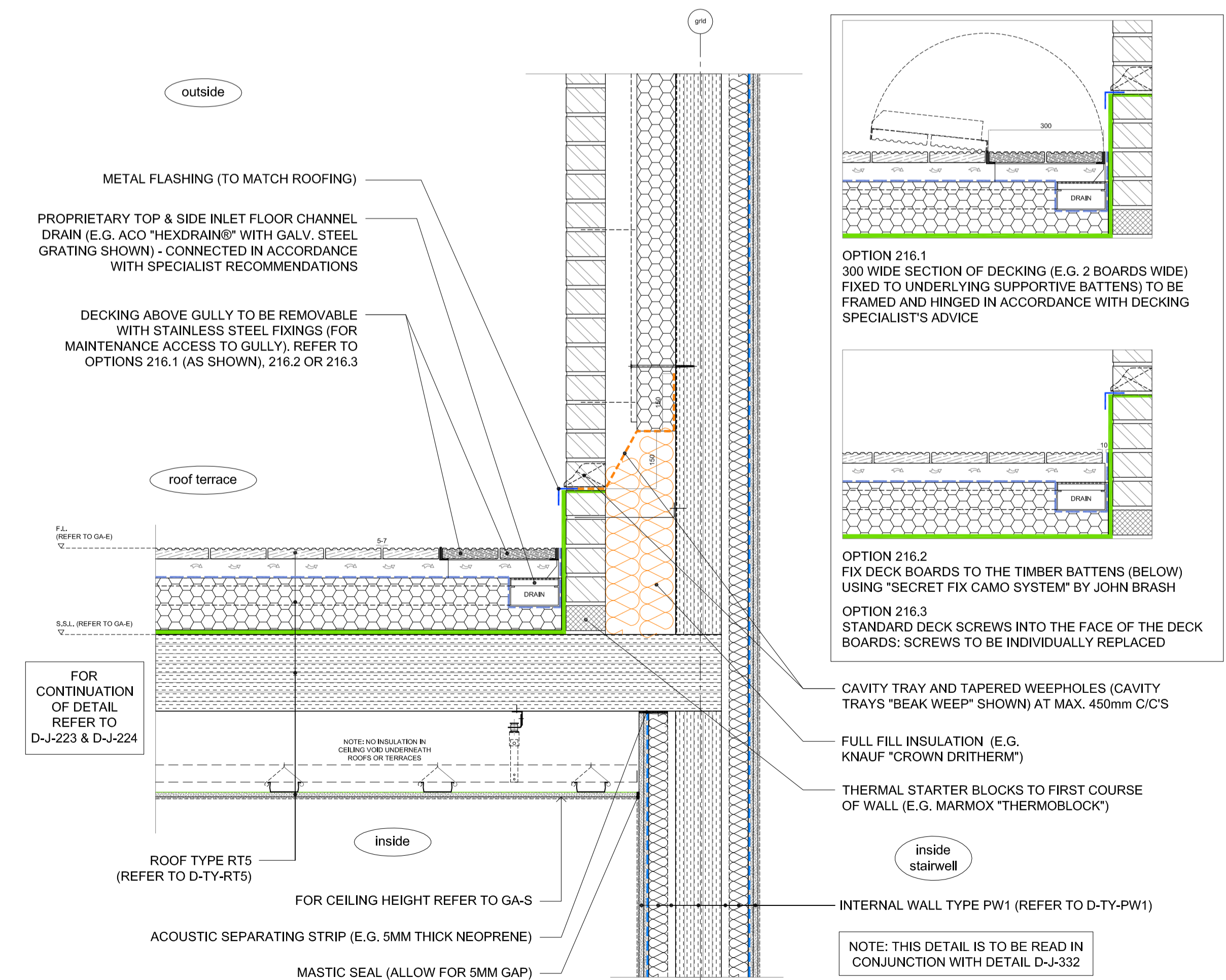
DETAIL - D-J-213 - Block A - Green roof / Wall type WT7



DETAIL - D-J-214 - Block B1 North - Feature brickwork - Terrace head



DETAIL - D-J-215 - Block B1 - RT5 / External wall WT1 / FT2 - Step in level



DETAIL - D-J-216 - Block B1 - External wall to stair well / Roof terrace