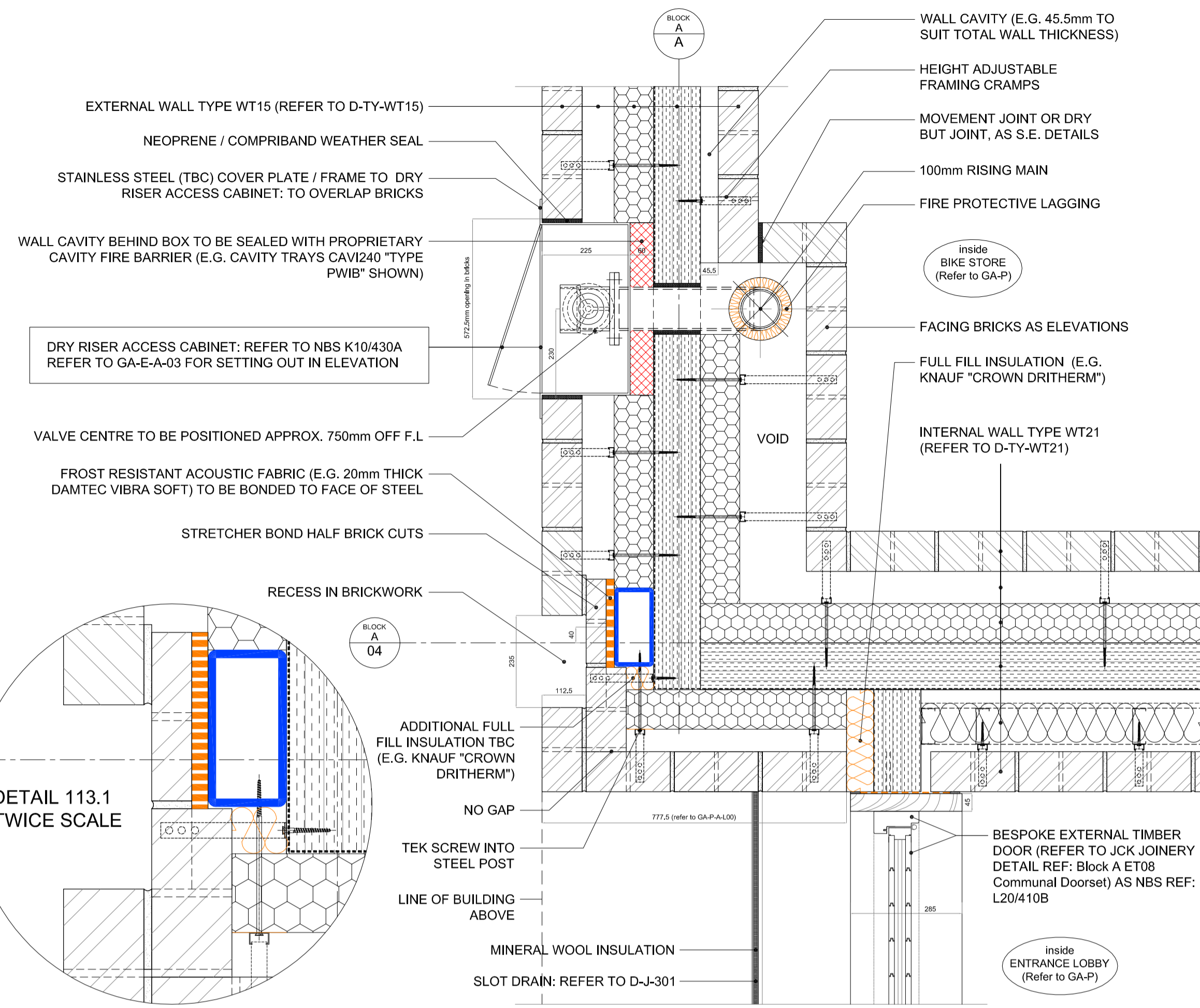
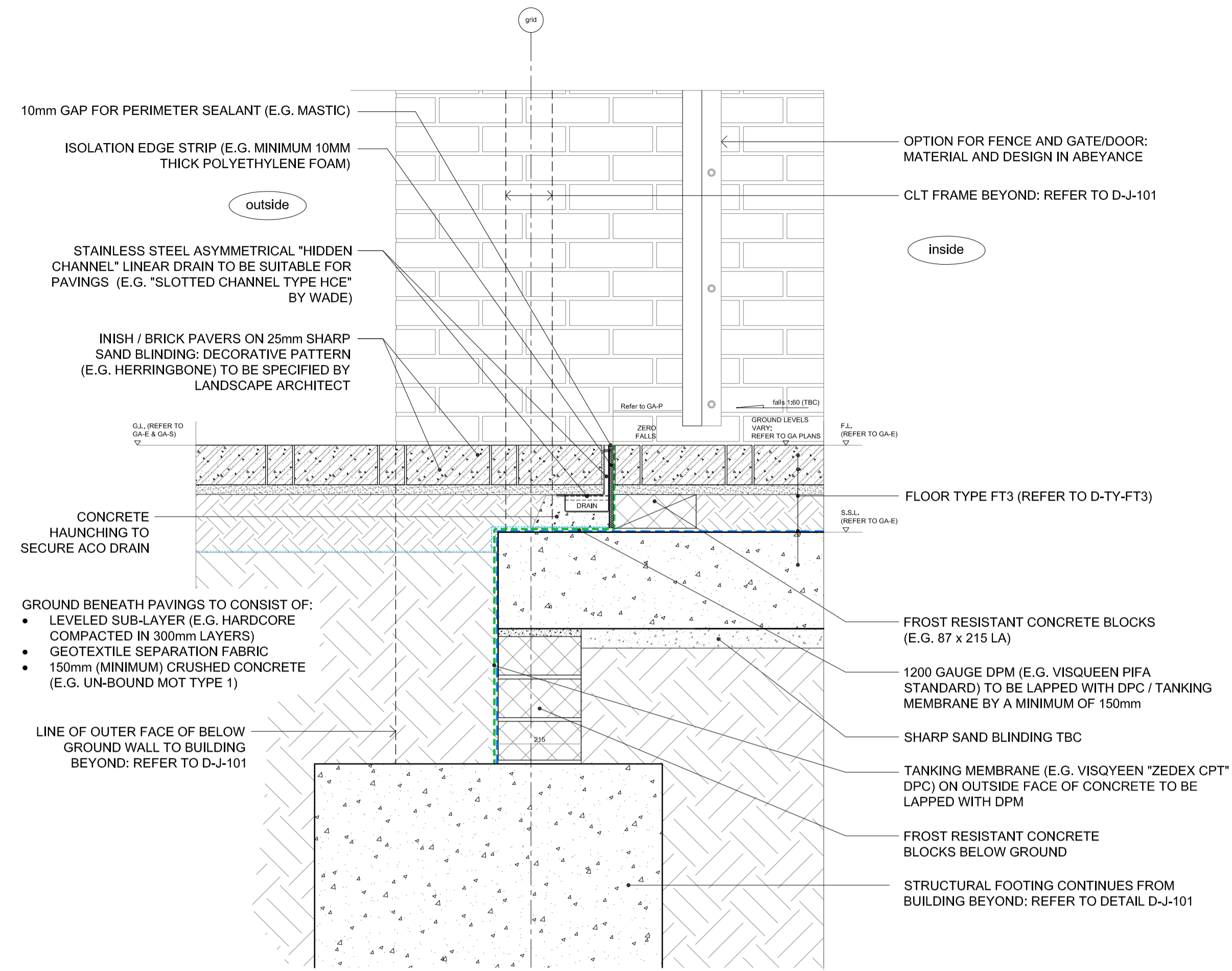


job	BACTON LOW RISE LONDON NWS	drawn	JPB	date	08.14
drawing	TYPICAL JUNCTIONS - EXTERNAL WALLS Details 113 to 116	scale:	1:10 @ A1 1:20 @ A3	job no:	1952
note:	all dimensions to be checked on site prior to commencement of the work. If this drawing exceeds the quantities in the bill of materials to be informed before the work is commenced. For all applications other than planning application purposes do not scale, use dimensions, this drawing is for reference only.				
drawing no.	D-J-113	rev.	as below		

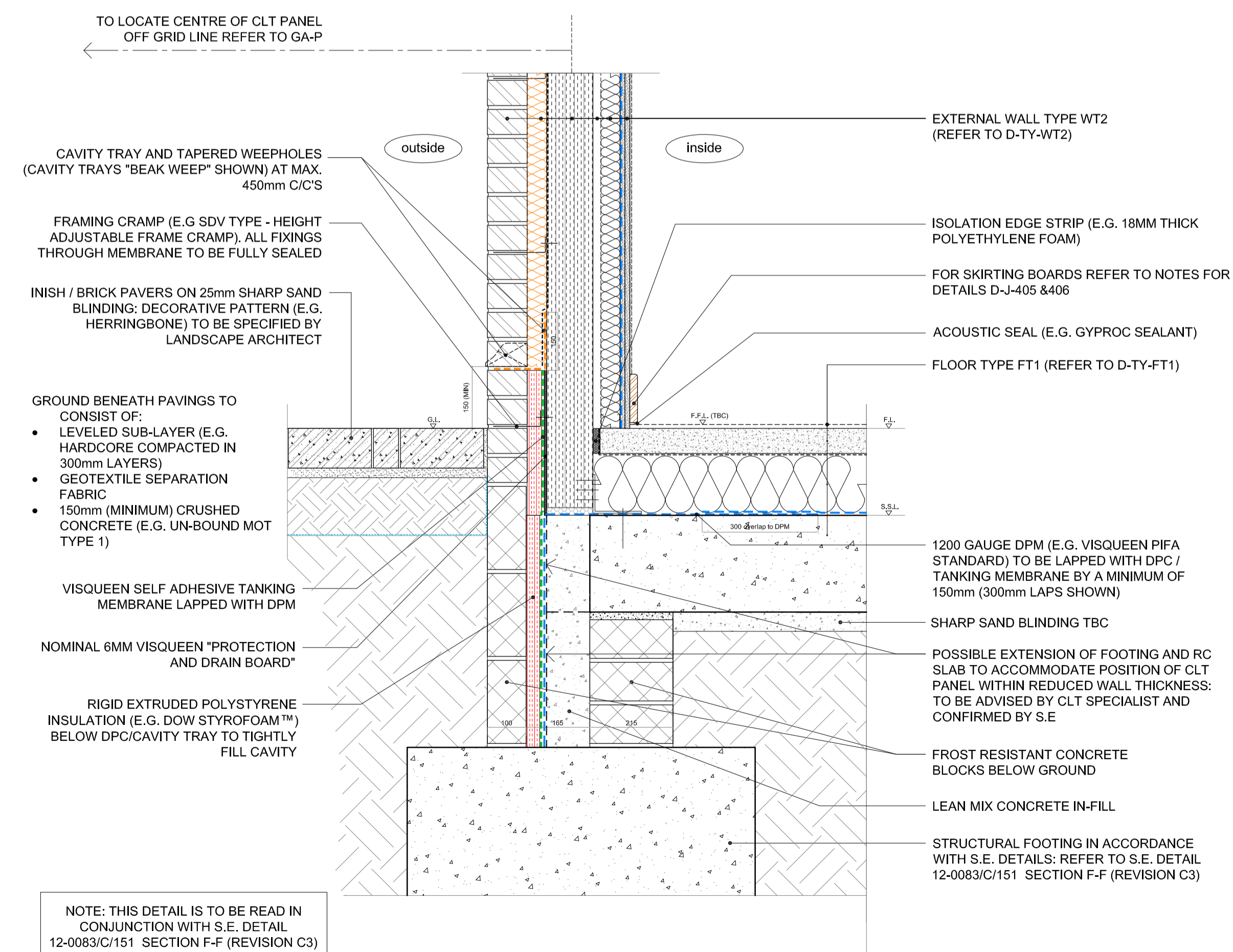
rev.	date	description	issued by	checked by
C1	27.08.14	Issued for construction	JPB	GW
C2	08.12.14	Updated in response to KCA comments 14.11.14	JPB	GW
C3	08.01.15	Brickwork and treatment around structural column updated for detail D-J-113	JPB	GW
C4	13.01.15	Updates in response to KCA comments dated 07.01.15	JPB	GW



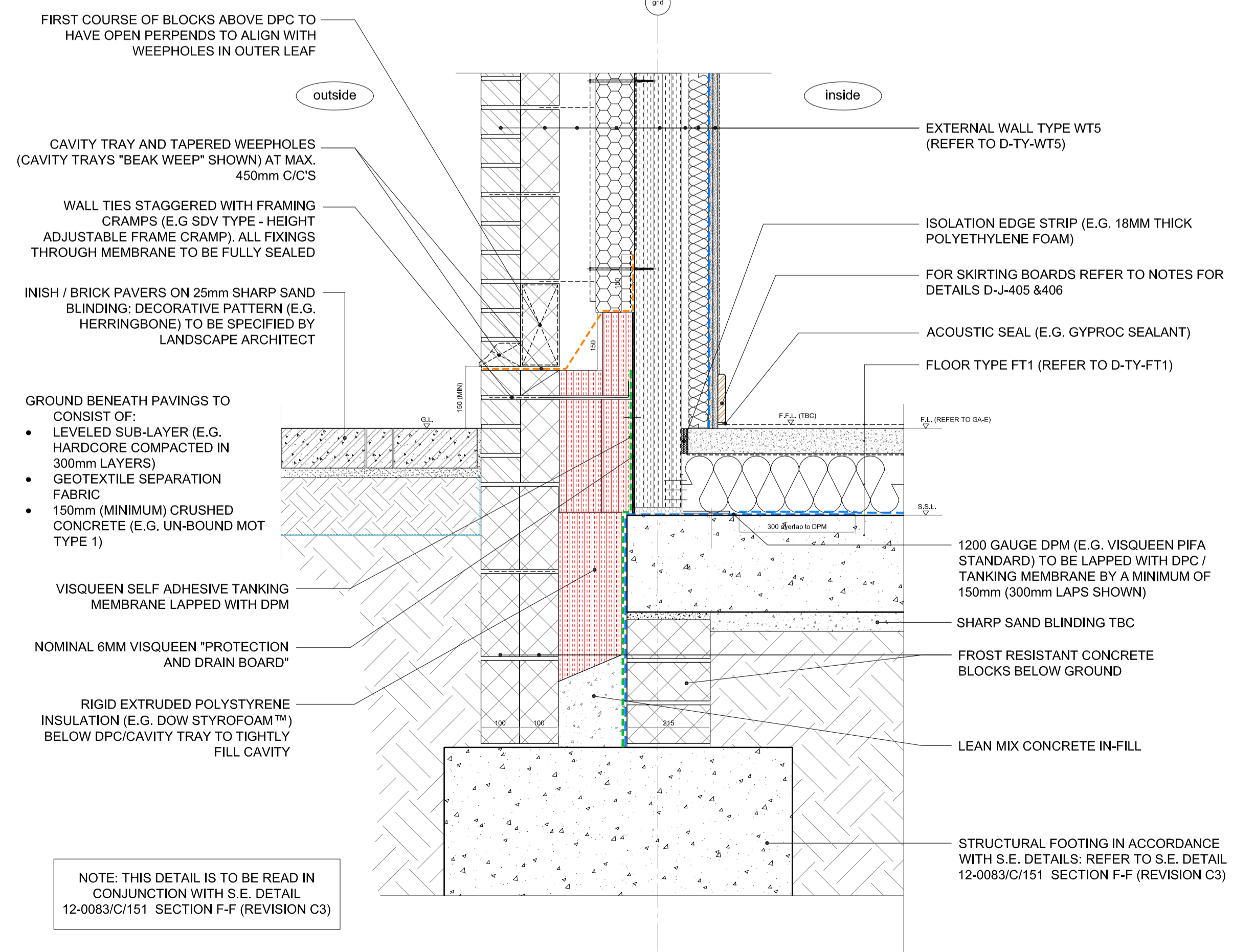
DETAIL - D-J-113 - Block A - PLAN - Dry riser / External wall - Access point on ground floor



DETAIL - D-J-114 - Bin/Bike Store - Threshold



DETAIL - D-J-115 - WT2 / FT1 - Tanking detail



DETAIL - D-J-116 - Block B1 North - WT1 / FT1 - Tanking detail