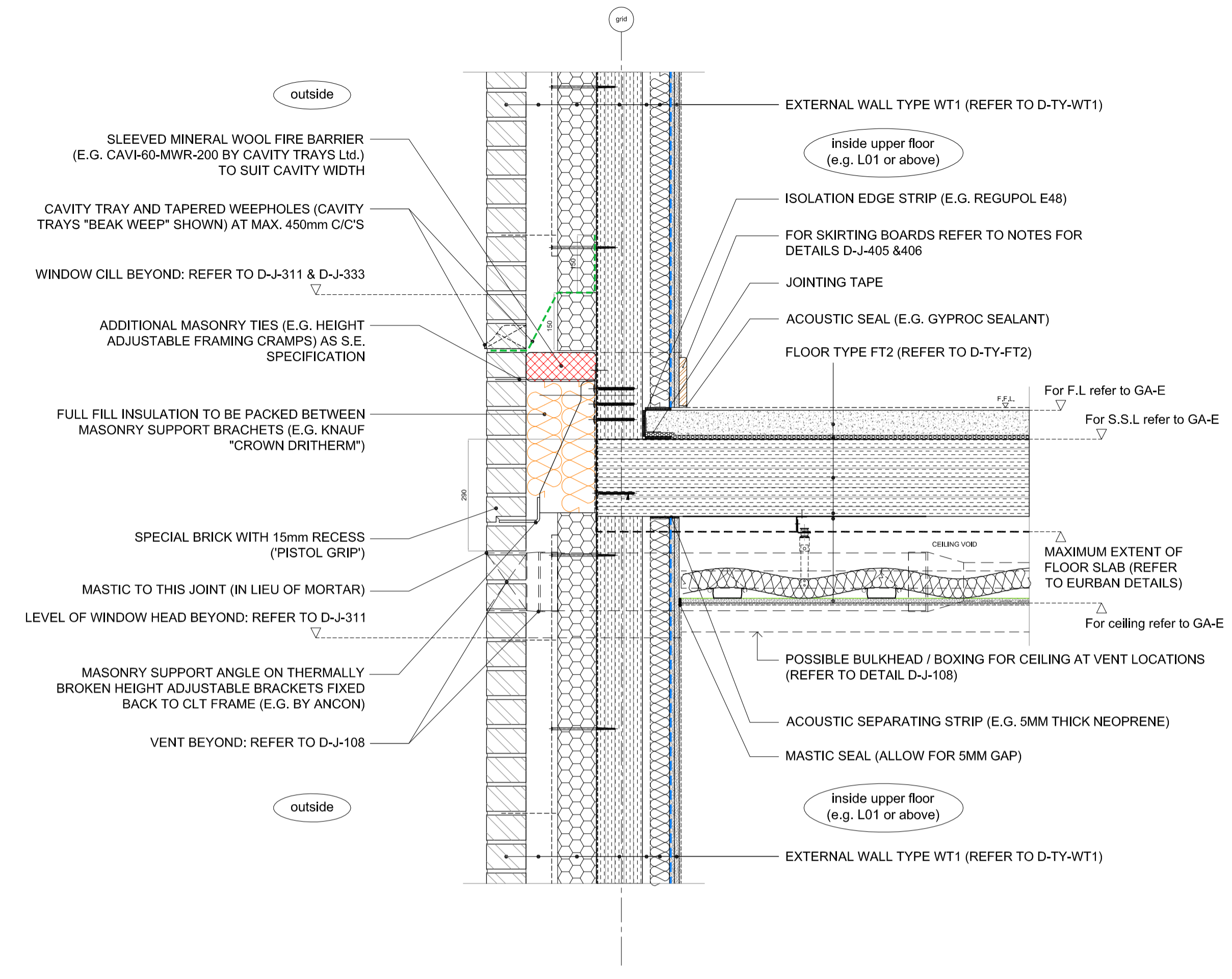


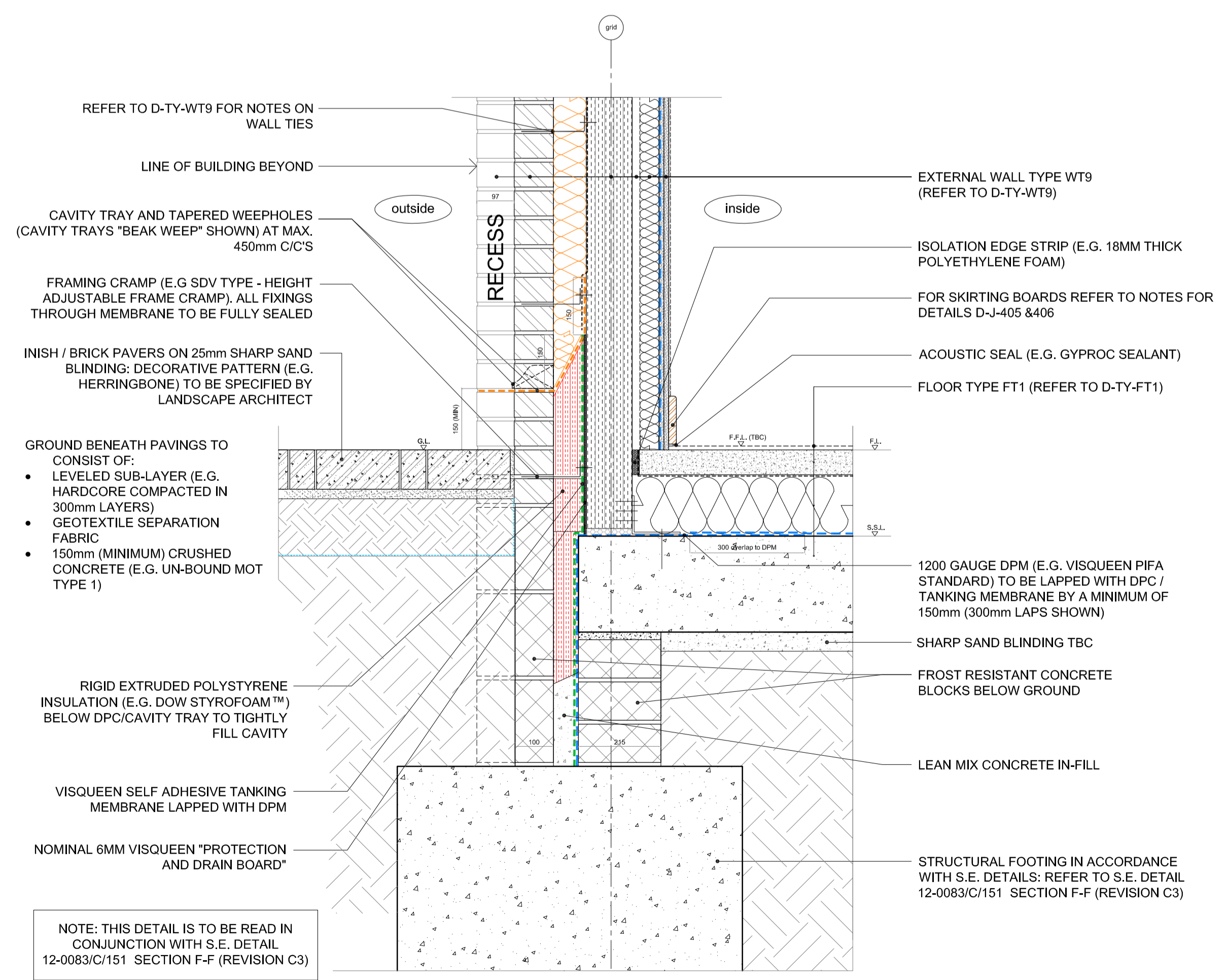
job: BACTON LOW RISE LONDON NWS	drawn: JPB	date: 08.14
drawing: TYPICAL JUNCTIONS - EXTERNAL WALLS Details 105 to 108	scale: 1:10 @ A1 1:20 @ A3	job no: 1952
note: all dimensions to be checked on site prior to commencement of the work. If this drawing exceeds the quantities in the bill of materials, the contractor is to be informed before the work is commenced. For all applications other than planning application purposes do not scale, use dimensions, this drawing is not to be used for construction.	drawing no: D-J-105 to 108	rev. as below

rev.	date	description	issued by	checked by
C1	27.08.14	Issued for construction	JPB	GW
C2	19.09.14	Masonry restraints updated for D-J-105 and D-J-108 as Ancon designs. Cavity fire barriers updated.	JPB	GW
C3	15.10.14	Levels and notes on mechanical vents revised for D-J-105 & 108	JPB	GW
C4	08.12.14	Updated in response to KCA comments 14.11.14	JPB	GW
C5	23.03.15	Updated in response to KCA comments 10.03.15	JPB	JD

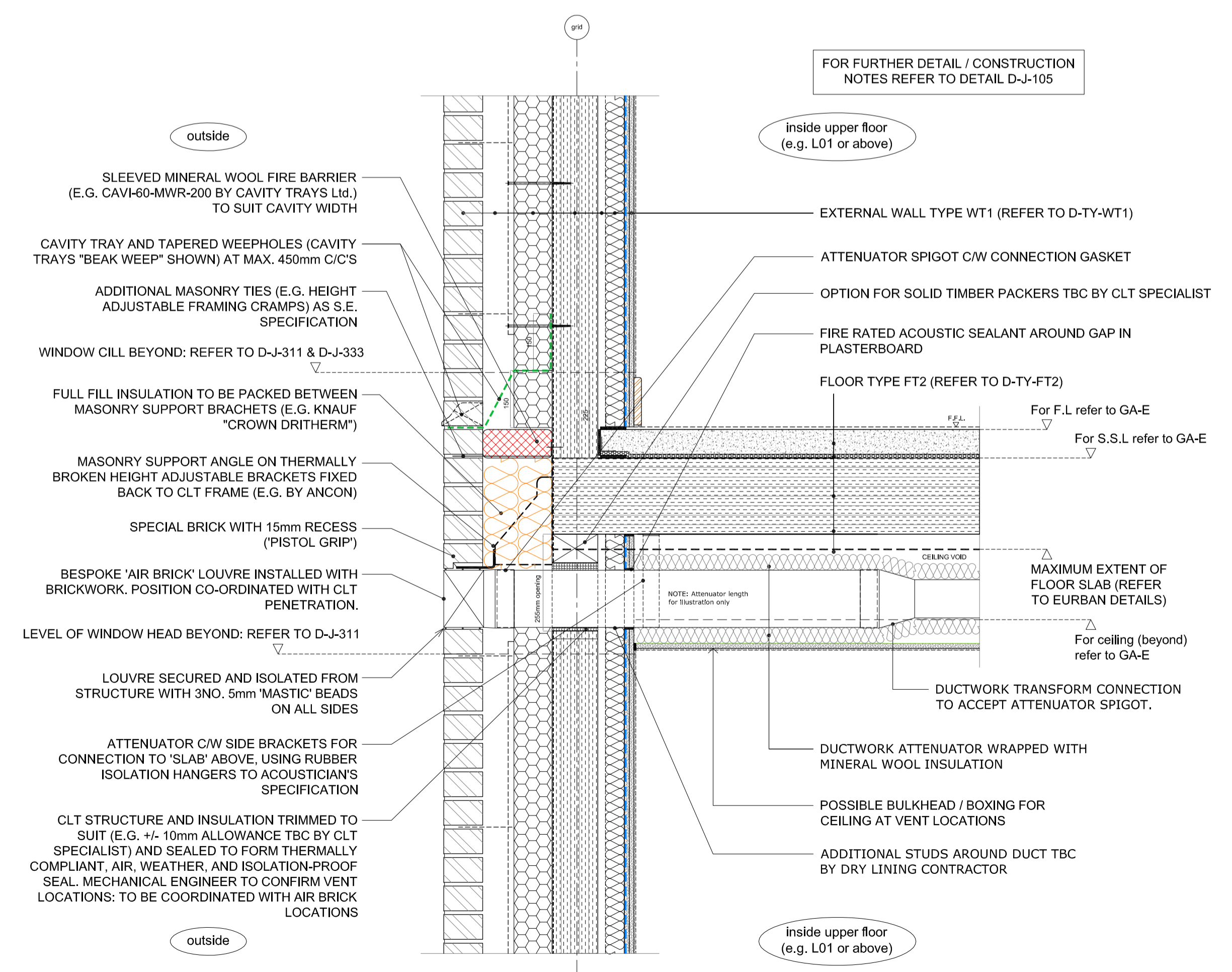
NOT USED



DETAIL - D-J-105 - Block A - SECTION - Upper floor type FT1 / External wall WT1



DETAIL - D-J-107 - Block A - SECTION - Tanking detail / Recessed panel in facing bricks



DETAIL - D-J-108 - Block A - Upper floor type FT1 - Vent through external wall type WT1