

**LIFETIME HOMES COMPLIANCE**

3] APPROACH TO ALL ENTRANCES: SEE GROUND FLOOR PLAN

4] ENTRANCES : ALL ENTRANCES ARE ILLUMINATED, COVERED AND LEVEL THRESHOLDS ARE PROVIDED

5] COMMUNAL STAIRS & LIFTS: COMPLY WITH CRITERIA AS INDICATED

6] INTERNAL DOORWAYS AND HALLWAYS: ALL DOORWAYS MEET CRITERIA AS DEMONSTRATED BELOW

7] CIRCULATION SPACE: TURNING CIRCLES ARE PROVIDED FOR WHEELCHAIRS IN DINING & LIVING ROOMS & ADEQUATE CIRCULATION SPACE IS PROVIDED ELSEWHERE AS DEMONSTRATED BELOW

10] ENTRANCE LEVEL WC: A FULLY WHEELCHAIR ACCESSIBLE WC IS PROVIDED WITHIN THE BATHROOM AS DEMONSTRATED BELOW. IN ADDITION A CAPPED OFF DRAIN IS PROVIDED BENEATH THE BATH FOR CONVERSION TO A SHOWER IF REQUIRED

11] BATHROOM WALLS: CONSTRUCTION WILL BE CAPABLE OF TAKING ADAPTION FOR HANDRAILS BETWEEN 300 & 1800mm ABOVE FLOOR LEVEL

13] REASONABLE POTENTIAL HOIST ROUTE FROM MAIN BEDROOM TO BATHROOM

14] BATHROOMS: HAVE BEEN DESIGNED TO INCORPORATE EASE OF ACCESS TO BATH, WC & WASH BASIN

15] WINDOWS IN THE LIVING SPACES WILL HAVE FULL HEIGHT GLAZING. WINDOW CONTROLS WILL BE NO HIGHER THAN 1200mm EXCEPT IN BATHROOMS / KITCHENS WHERE WINDOW DESIGNS WILL ALLOW FOR REMOTE / MECHANICAL ADAPTION TO OPERATE WINDOWS

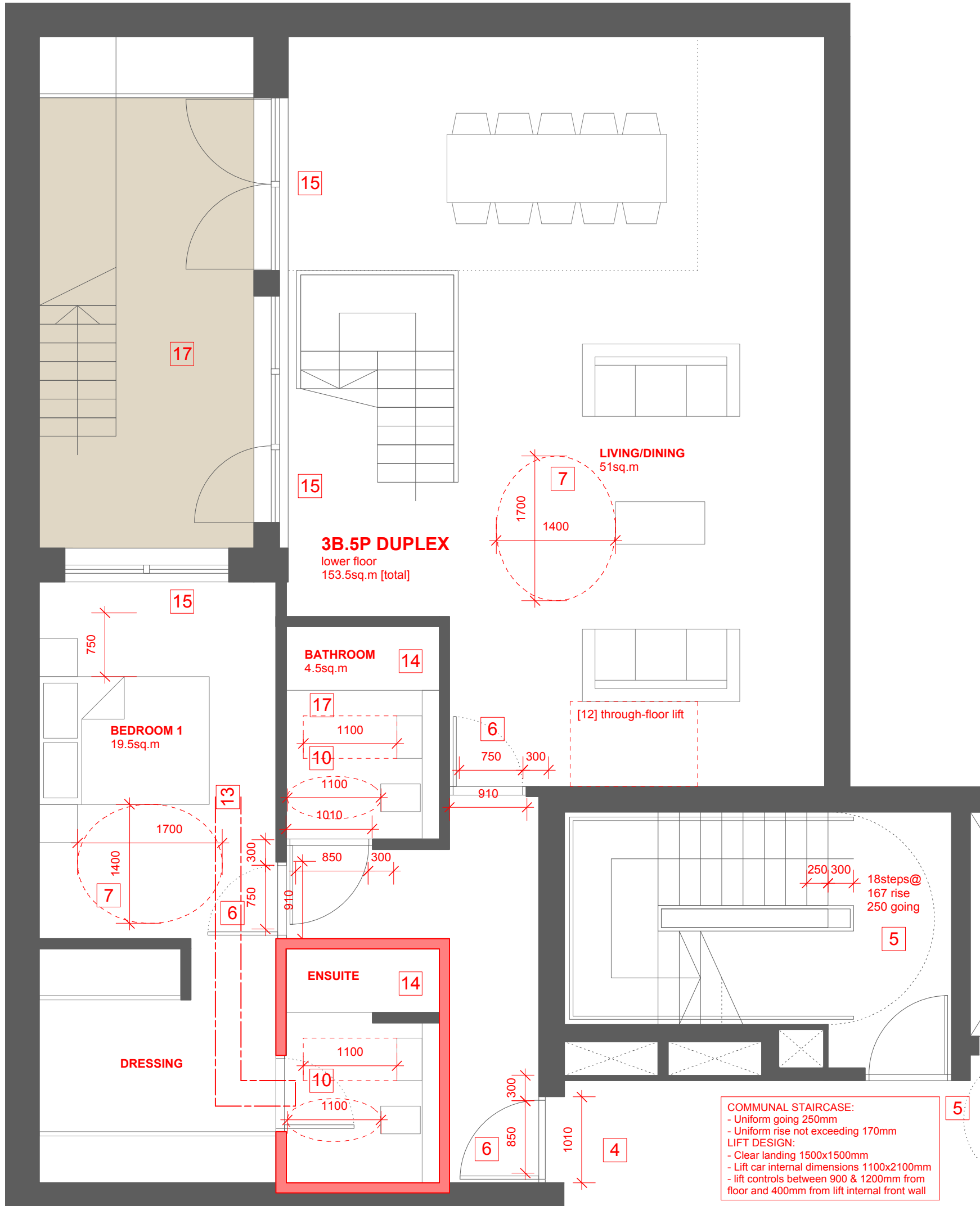
16] SWITCHES, SOCKETS, VENTILATION & SERVICE CONTROLS WILL BE LOCATED BETWEEN 450 & 1200mm FROM FLOOR LEVEL

**CODE FOR SUSTAINABLE HOMES**

17] (ENE 4) AN ADEQUATE AND SECURE DRYING SPACE IS TO BE PROVIDED TO THE BATHROOM OR BALCONY

18] (ENE 8) A SECURE CYCLE STORAGE AREA PROVIDED AT BASEMENT LEVEL - ACCESSED VIA LIFT

19] (ENE 9) AN AREA IS TO BE PROVIDED FOR A SUITABLE HOME OFFICE



© John Pardey Architects  
 • Do not Scale. Use of figure dimensions only.  
 • All dimensions to be checked on site.  
 • All drawings to be read in conjunction with engineer's drawings. Any discrepancies between consultants' drawings to be reported to the Architect before any work commences.  
 • The Contractor's attention is drawn to the Health & Safety matters identified in the Health & Safety plan and on drawings as being potentially hazardous.  
 • These terms should not be considered as a full and final list.  
 • The Work Package Contractor's normal Health & Safety obligations still apply when undertaking constructional operations both on and off site.

rev	date	initials	description

Drawing:  
**LIFETIME HOMES COMPLIANCE**  
 UNIT TYPE 9 - LOWER FLOOR  
 project:  
**5-7 LANCASTER GROVE**  
 drawing no:  
**1409\_5010**  
 status code/ revision:  
 -  
 status:  
**PLANNING**  
 scale 1/50  
 date:  
**FEB 2015**



john pardey architects  
 Beck Farm Studio St Leonards Road  
 East End Lynton Hampshire SO41 5SR  
 www.johnpardeyarchitects.com 01590 626465

